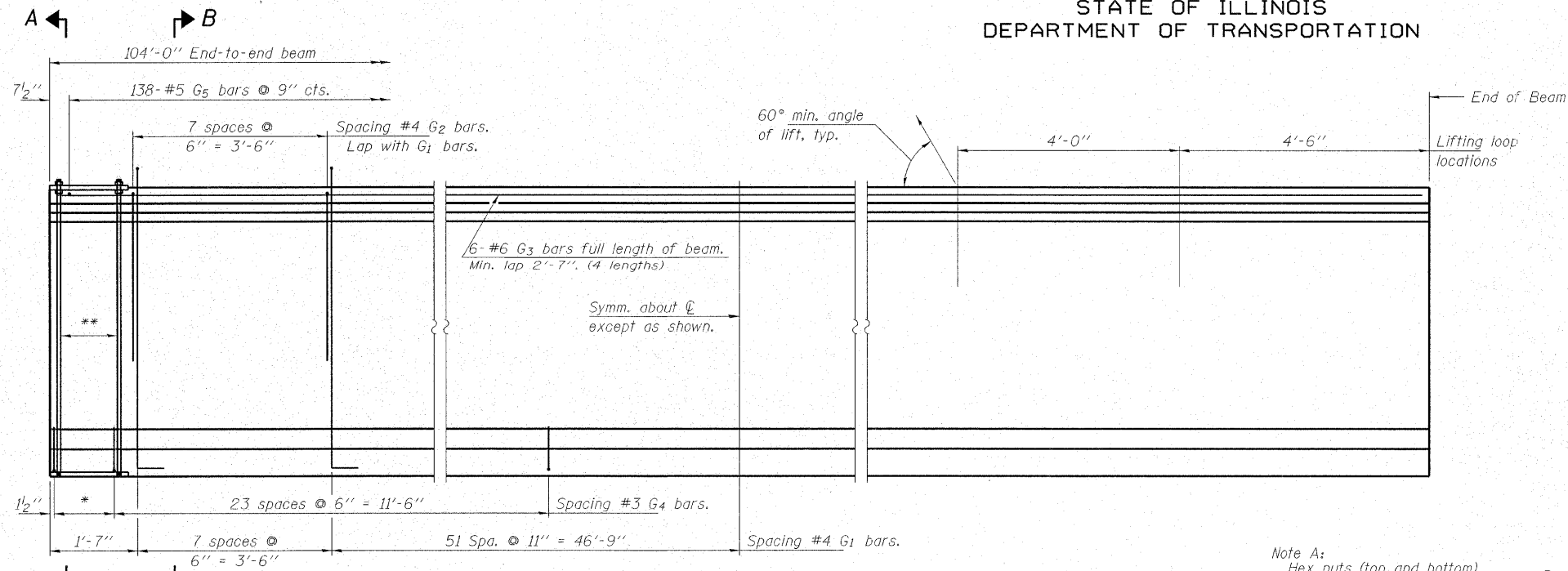


STATE OF ILLINOIS
DEPARTMENT OF TRANSPORTATION

ROUTE NO.	SECTION	COUNTY	TOTAL SHEETS	SHEET NO.	SHEET NO. 18
FAU 2503	(35) BR-2	KENDALL	129	42	25 SHEETS
FED. ROAD DIST. NO. 7	ILLINOIS	FED. AID PROJECT-			

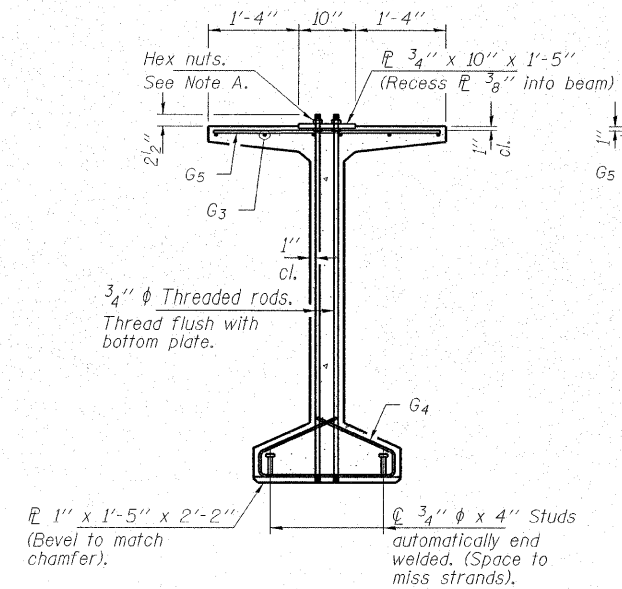
Contract No. 66399



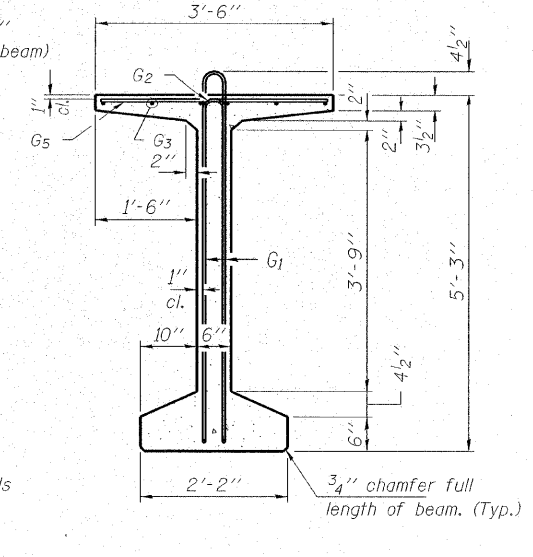
ELEVATION OF BEAM
(Showing reinforcement & dimensions)

- * 4 Spa. @ 3/4" = 1'-1"
- ** 5-3/4" ϕ threaded dowel rods @ 3/4" cts., Each Face.

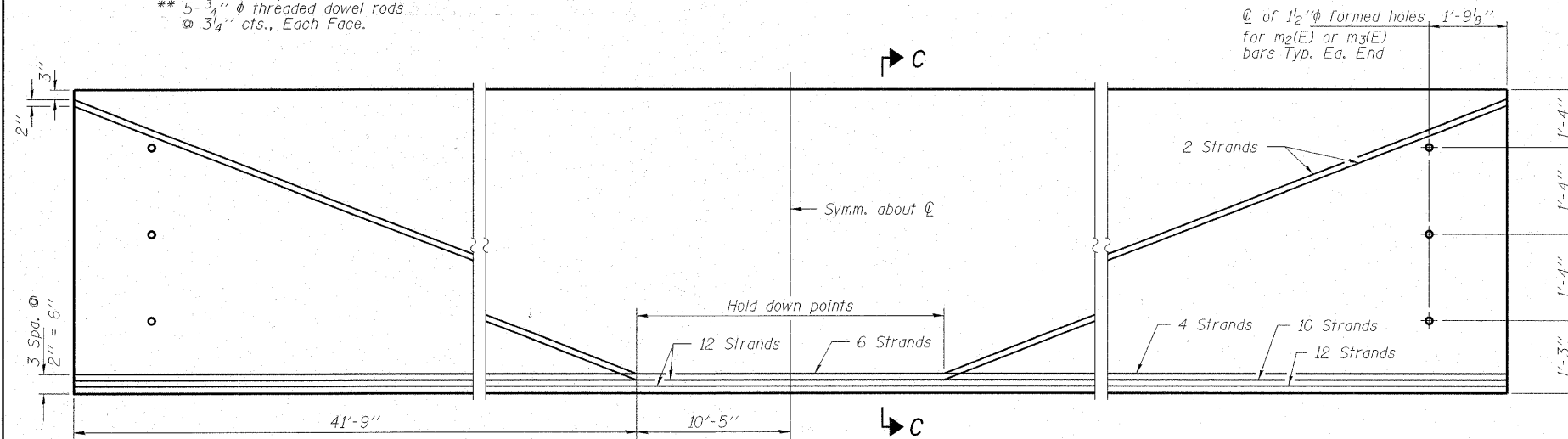
Note A:
Hex nuts (top and bottom) with lock washers (top). Only tighten sufficiently to compress lock washers.



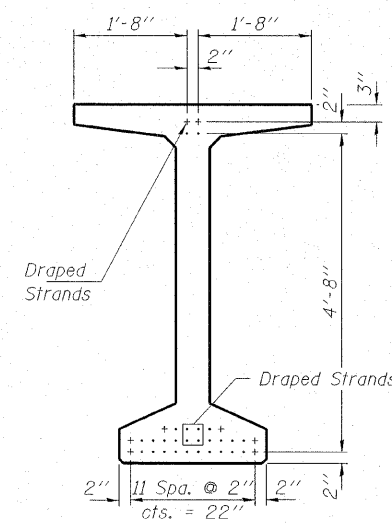
SECTION A-A



SECTION B-B



ELEVATION OF BEAM
(Showing prestressing steel)



SECTION C-C

***BAR LIST**

Bar	No.	Size	Length	Shape
G1	118	#4	11'-11"	U
G2	16	#4	6'-2"	U
G3	24	#6	27'-6"	U
G4	56	#3	4'-11"	U
G5	138	#5	3'-4"	U

*For one beam only.

Notes:
See sheet 19 of 25 for additional details and Bill of Material.
Required release strength, $f'ci$, shall be 5,000 psi.

HAMPTON, LENZINI & RENWICK, INC.
CIVIL & STRUCTURAL ENGINEERS
LAND SURVEYORS

3085 STEVENSON DRIVE, SUITE 201
SPRINGFIELD, ILLINOIS 62703
(217) 546-3400

HLR

ELGIN • SPRINGFIELD

PROJECT NUMBER: 12-06-0029-1 DATE: 01/14/08
DESIGNED: P.S.L. CHECKED: M.D.C. DRAWN: D.A.B.

63" PPC BULB-T BEAM
IL 25 OVER WAUBONSEE CREEK
F.A.U. ROUTE 2503 / SECTION (35) BR-2
KENDALL COUNTY
STATION 12+91.00
STRUCTURE NO. 047-0062