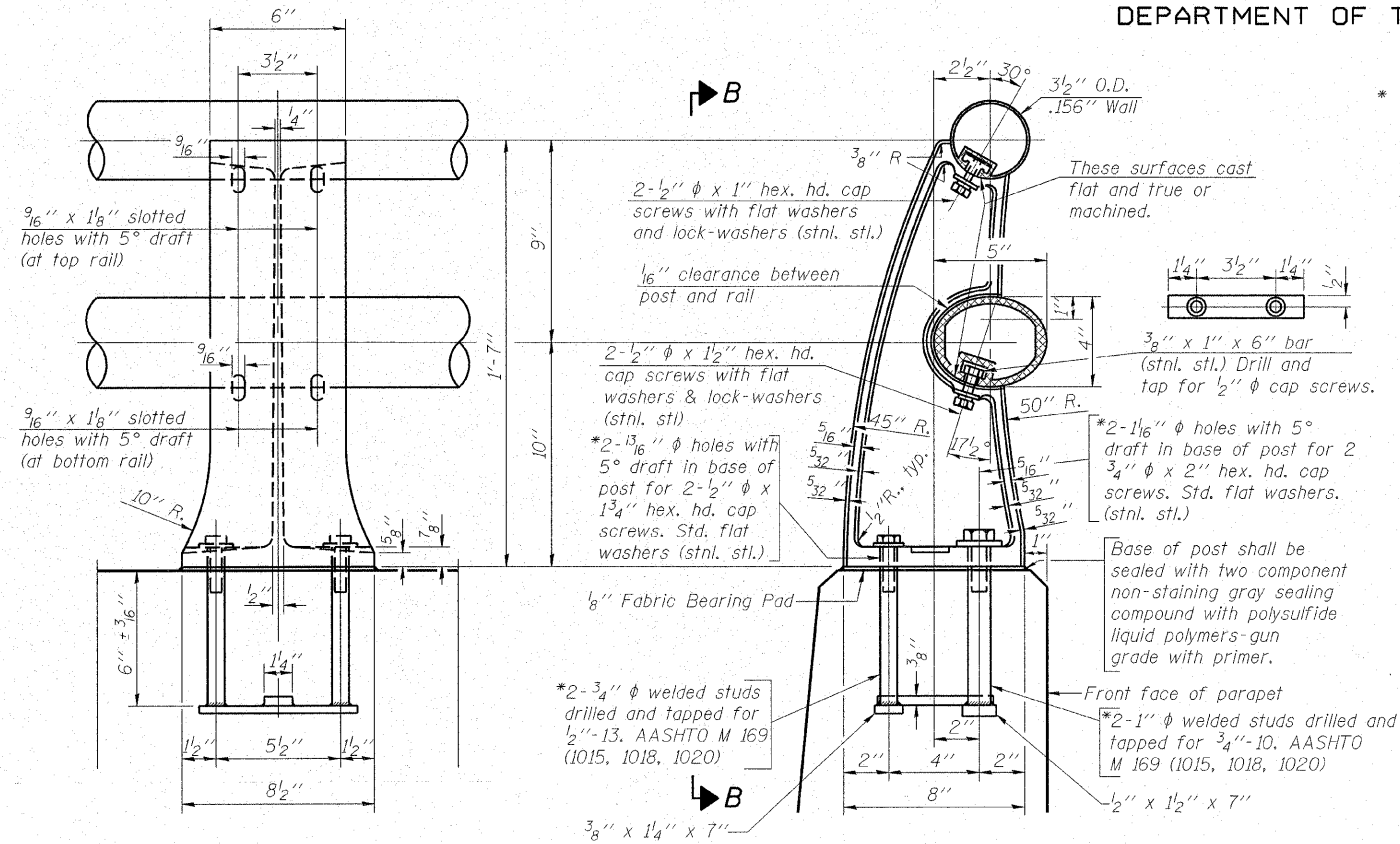


STATE OF ILLINOIS
DEPARTMENT OF TRANSPORTATION

ROUTE NO.	SECTION	COUNTY	TOTAL SHEETS	SHEET NO.
FAU 2503	(35) BR-2	KENDALL	129	44
FED. ROAD DIST. NO. 7	ILLINOIS	FED. AID PROJECT		

Contract No. 66399

SHEET NO. 20
25 SHEETS

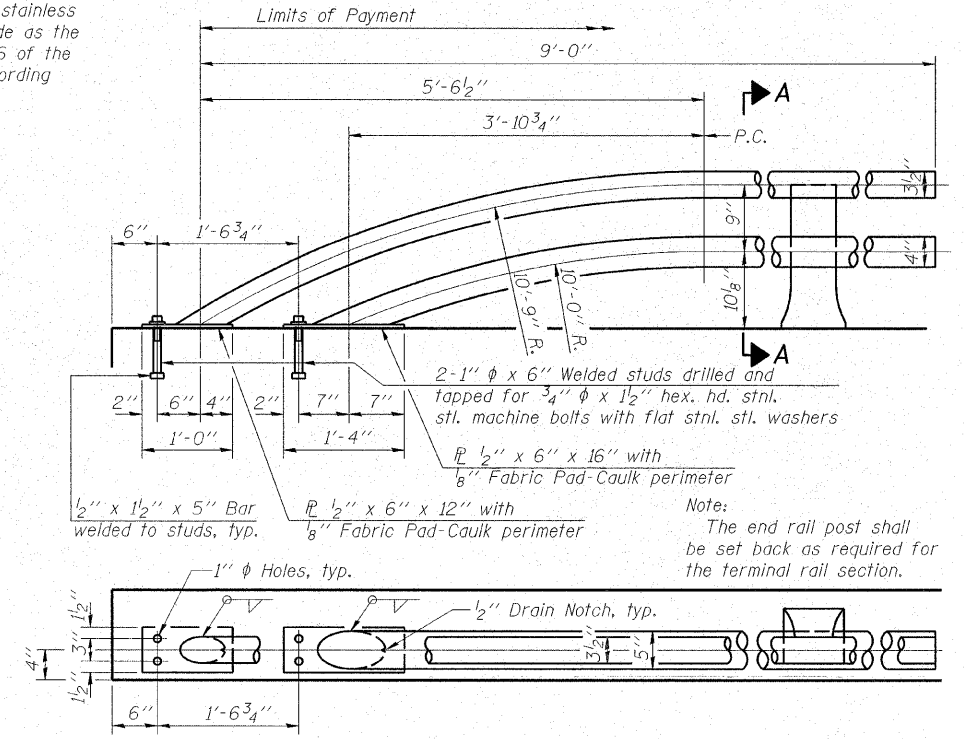


VIEW B-B

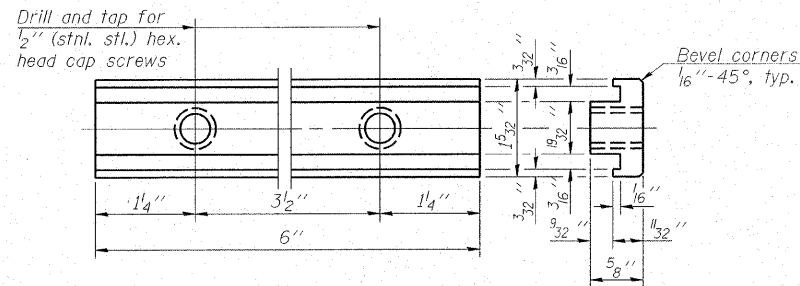
SECTION A-A

RAIL POST DETAILS

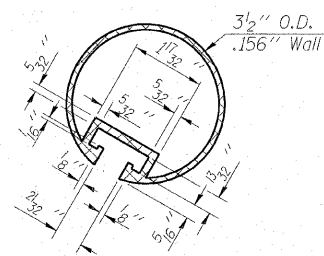
* In lieu of the cast-in-place anchor device shown, the Contractor has the option of drilling and setting stainless steel anchor rods of the same diameter and grade as the specified cap screws according to Article 509.06 of the Standard Specifications. Embedment shall be according to the manufacturer's specifications.



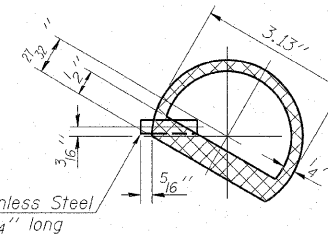
RAIL TERMINAL SECTION



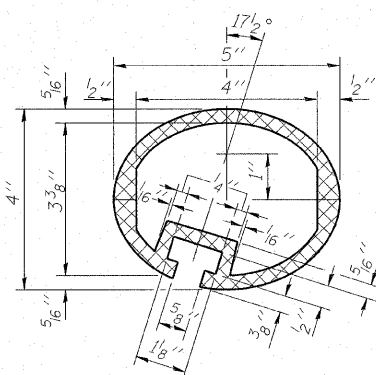
RAIL POST CLAMP BAR
For Top Rail



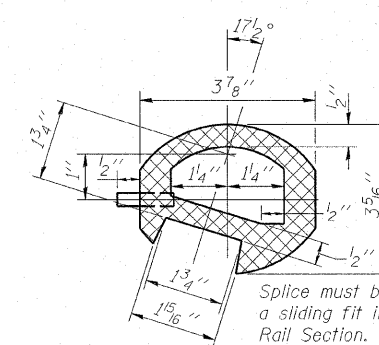
SECTION THRU TOP RAIL



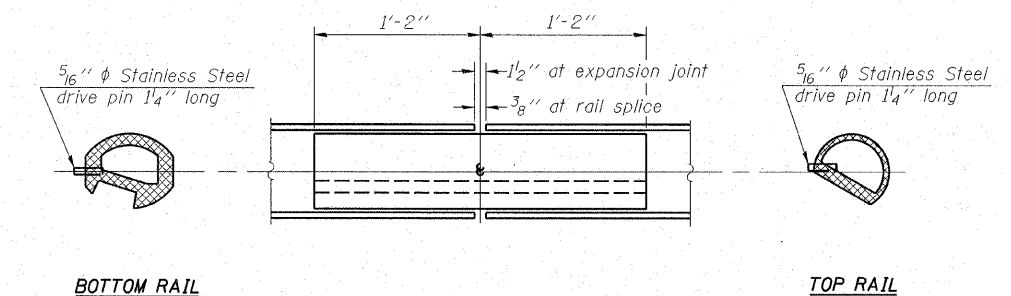
SECTION THRU SPLICE
For Top Rail



SEC. THRU ELLIPTICAL
RAIL SECTION



SEC. THRU SPLICE



RAIL SPLICE

Notes:
All Posts shall be normal to parapet.
All joints in rail shall be spliced per detail.
Provide 1-1/8" and 2-1/16" Aluminum Shims for 25% of the Posts. Rail elements shall be parallel to Grade-high spots will be ground and low spots shimmed.
See sheet 15 of 25 for rail post spacing.

BILL OF MATERIAL

Item	Unit	Quantity
Aluminum Railing, Type L	Foot	104

HAMPTON, LENZINI & RENWICK, INC.
CIVIL & STRUCTURAL ENGINEERS
LAND SURVEYORS
3085 STEVENSON DRIVE, SUITE 201
SPRINGFIELD, ILLINOIS 62703
(217) 548-3400

ELGIN • SPRINGFIELD

PROJECT NUMBER: 12-06-0029-1 DATE: 01/14/08
DESIGNED: P.S.L. CHECKED: M.D.C. DRAWN: D.A.B.

RAILING DETAILS
IL 25 OVER WAUBONSEE CREEK
F.A.U. ROUTE 2503 / SECTION (35) BR-2
KENDALL COUNTY
STATION 12+91.00
STRUCTURE NO. 047-0062