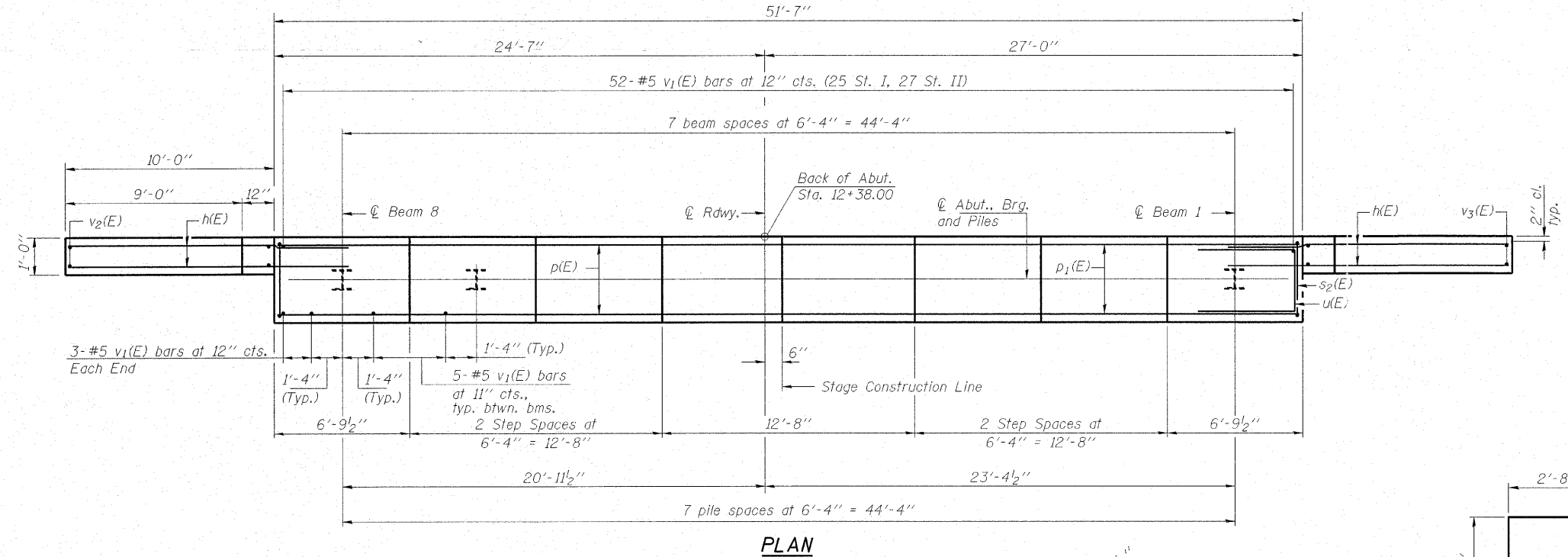
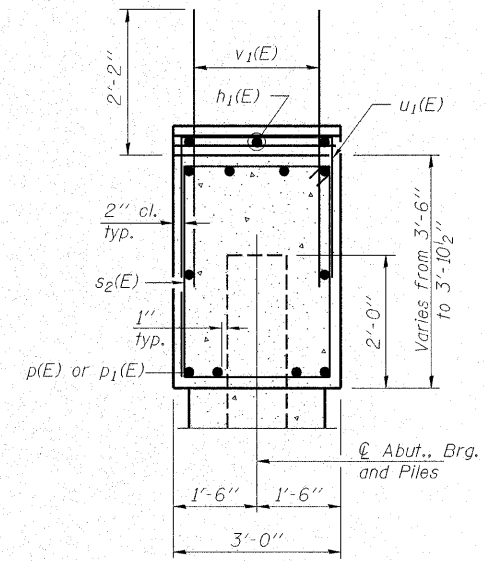
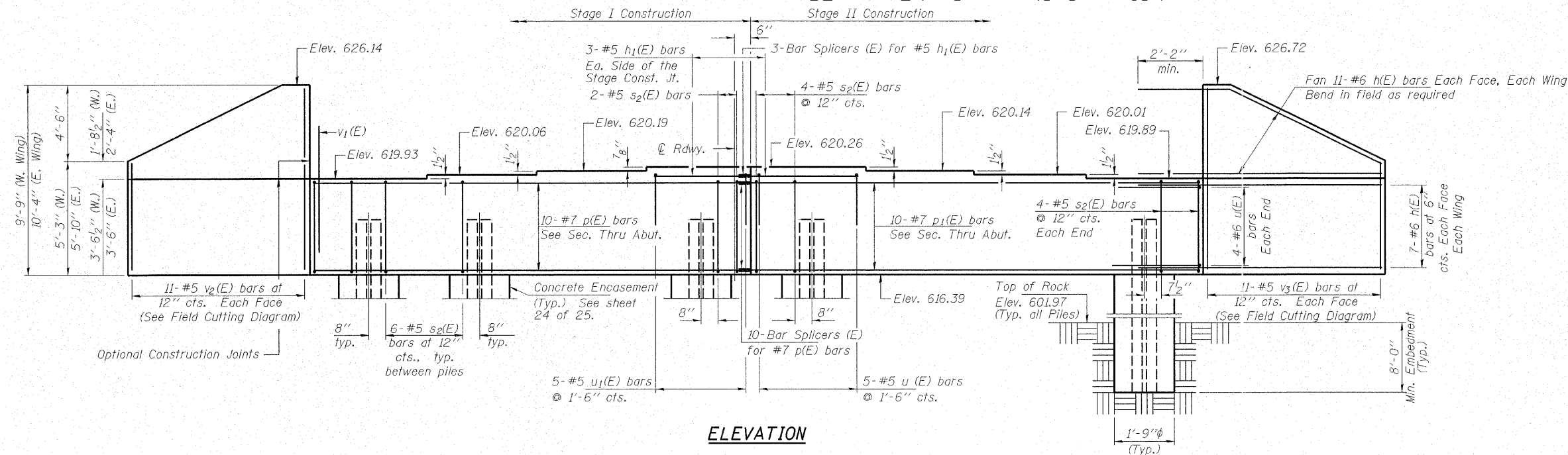


STATE OF ILLINOIS
DEPARTMENT OF TRANSPORTATION

ROUTE NO.	SECTION	COUNTY	STATION	SHEET	SHEET NO. 21
FAU 2503	(35) BR-2	KENDALL	129	45	25 SHEETS
FED. ROAD DIST. NO. 7	ILL. PROJ. NO.	FED. AID PROJECT-	Contract No. 66399		

Notes: Four steps monolithically with cap.



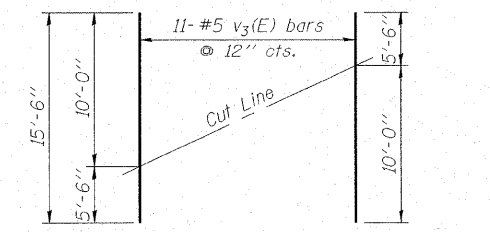
BILL OF MATERIAL

Bar No.	Size	Length	Shape
$h_1(E)$	#6	12'-4"	—
$h_1(E)$	#5	6'-0"	—
$p_1(E)$	#7	24'-10"	—
$p_1(E)$	#7	26'-3"	—
$s_2(E)$	#5	12'-7"	□
$u_1(E)$	#6	8'-7"	—
$u_1(E)$	#5	6'-0"	—
$v_1(E)$	#5	4'-4"	—
$v_2(E)$	#5	14'-6"	—
$v_3(E)$	#5	15'-6"	—
Structure Excavation	Cu. Yd.	260.0	
Concrete Structures	Cu. Yd.	29.0	
Reinforcement Bars, Epoxy Coated	Pound	4,000	
Furnishing Steel Piles HP12x63	Foot	200	
Concrete Encasement	Cu. Yd.	2.8	
Setting Piles in Rock	Each	8	

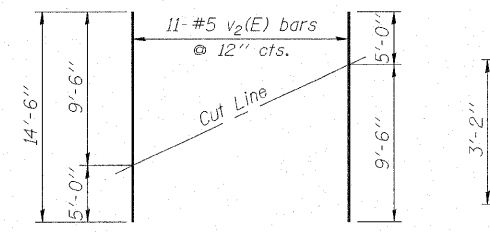
For details of Bar Splicers, see sheet 23 of 25.
For details of piles and Concrete Encasement, see sheet 24 of 25.

PILE DATA

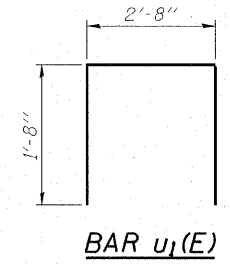
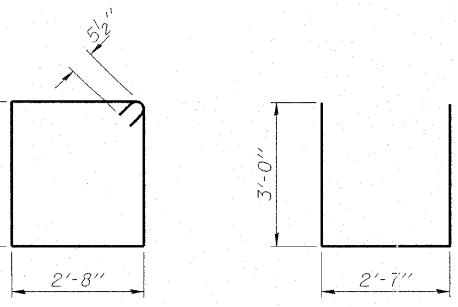
Type: Steel HP12x63 (Set in Rock)
Est. Length: 25 ft.
No. Production Piles: 8
Allowable Resistance Available: 165 k



Order $v_3(E)$ full length. Cut as shown and use remainder of bars in opposite face.



Order $v_2(E)$ full length. Cut as shown and use remainder of bars in opposite face.



HAMPTON, LENZINI & RENWICK, INC.
CIVIL & STRUCTURAL ENGINEERS
LAND SURVEYORS

3085 STEVENSON DRIVE, SUITE 201
SPRINGFIELD, ILLINOIS 62703
(217) 546-3400

ELGIN • SPRINGFIELD

PROJECT NUMBER: 12-06-0029-1 | DATE: 01/14/08
DESIGNED: P.S.L. | CHECKED: M.D.C. | DRAWN: D.A.B.

NORTH ABUTMENT
IL 25 OVER WAUBONSEE CREEK
F.A.U. ROUTE 2503 / SECTION (35) BR-2
KENDALL COUNTY
STATION 12+91.00
STRUCTURE NO. 047-0062