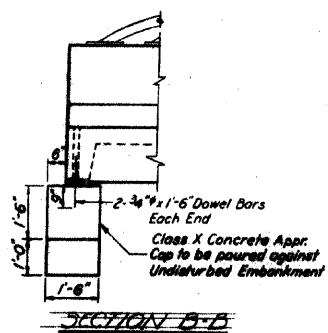
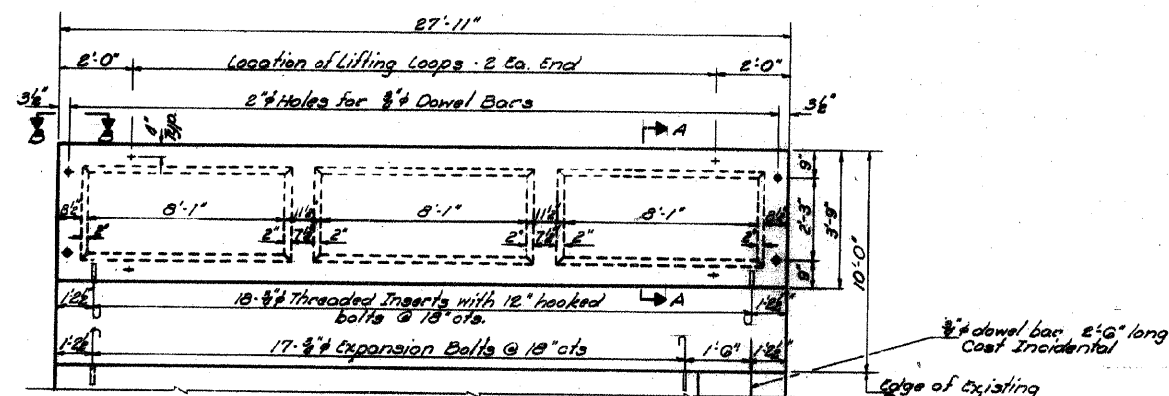


ROUTE NO.	SECTION	COUNTY	SHEET NO.	TOTAL SHEETS
FAU 2503	(35)BR-2	KENDALL	129	53
FED. ROAD DIST. NO.	5	ILLINOIS	FED. AID PROJECT	

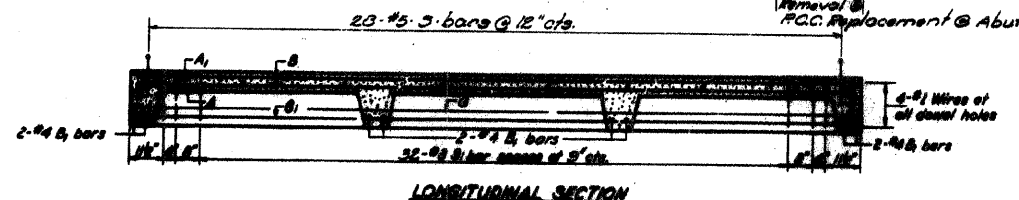
STATE OF ILLINOIS  
DEPARTMENT OF TRANSPORTATION



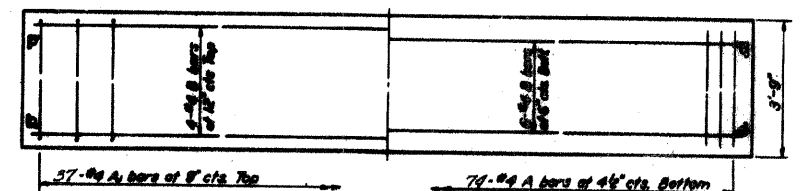
SECTION B-B



PARTIAL PLAN OF APPROACH



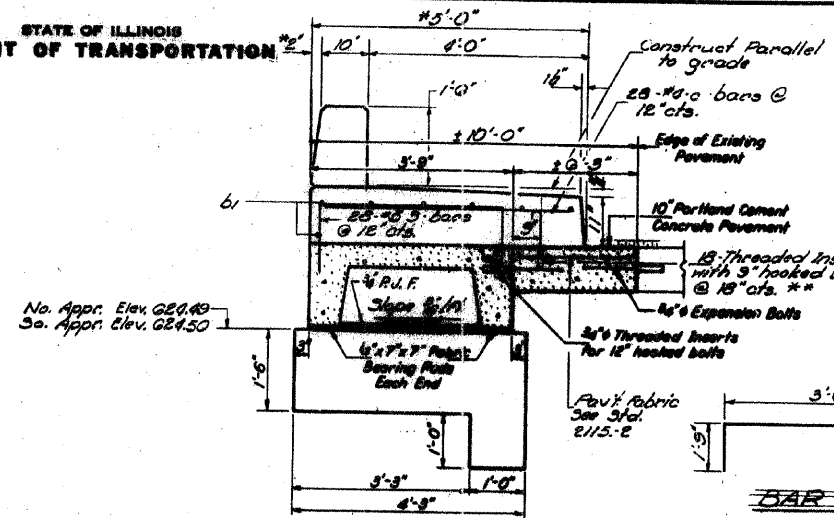
LONGITUDINAL SECTION



SLAB REINFORCEMENT

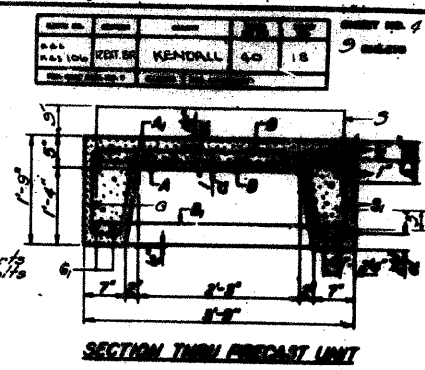
J. Edmonds  
 J. Schaller  
 J. SCHNOLLER  
 J.S.  
 SUPERVISOR

March 21, 2008  
 J. Schaller  
 J.S.  
 SUPERVISOR

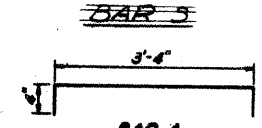


SECTION A-A

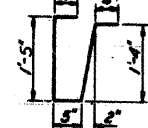
\* Min. dimensions to be adjusted for deck beam overrun.  
 \*\* Seal inserts with plastic inserts prior to Stage II Constr. #4 x 9" hooked bolts to be imported during Stage II Constr. prior to pouring sidewalk.  
 Cost Incidental to 10" Portland Cement Concrete Pavement.



SECTION THREE PRECAST UNIT



BAR S



BAR A1

FOR LIST-ONE UNIT

1	2	3	4	5	6	7	8	9	10	11	12	13	14	15	16	17	18	19	20	21	22	23	24	25	26	27	28	29	30	31	32	33	34	35	36	37	38	39	40	41	42	43	44	45	46	47	48	49	50	51	52	53	54	55	56	57	58	59	60	61	62	63	64	65	66	67	68	69	70	71	72	73	74	75	76	77	78	79	80	81	82	83	84	85	86	87	88	89	90	91	92	93	94	95	96	97	98	99	100
---	---	---	---	---	---	---	---	---	----	----	----	----	----	----	----	----	----	----	----	----	----	----	----	----	----	----	----	----	----	----	----	----	----	----	----	----	----	----	----	----	----	----	----	----	----	----	----	----	----	----	----	----	----	----	----	----	----	----	----	----	----	----	----	----	----	----	----	----	----	----	----	----	----	----	----	----	----	----	----	----	----	----	----	----	----	----	----	----	----	----	----	----	----	----	----	----	----	----	-----

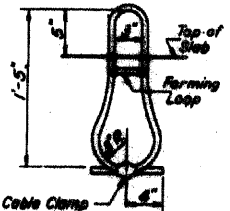
NOTES

Unless otherwise approved by the Engineer, lifting loops shall be 1/4" x 10 class wire rope with fiber core and shall have a minimum ultimate strength of 10,000 lbs. Loops shall be removed after slab has been erected. Holes shall be drilled and anchor bolts grouted in place. Cost of reinforcement and accessories used into the slab and bearing pads, formwork, setting for, placing and grading under slabs and 1/2" hooked bolts is included in Unit bid price for Precast Concrete Bridge Deck. The Precast Concrete Bridge Deck shall be erected and aligned with the exterior face of the exterior Deck Beam after Deck Beams are in final position.

ALL OF MATERIAL

Reinforcement	200
Formwork	50
Setting	30
Grading	20
Under slabs	10
1/2" hooked bolts	10

Class X Concrete @ 3000 psi for sidewalk & curb billed on sheet #2.



LIFTING LOOP DETAIL

STRESSES

f<sub>t</sub> = 4,000 psi  
 f<sub>c</sub> = 1,000 psi  
 f<sub>s</sub> = 20,000 psi  
 n = 8

ADDITIONAL NOTES

HAMPTON, LENZINI & RENWICK, INC.  
 CIVIL & STRUCTURAL ENGINEERS  
 3085 STEVENSON DRIVE, SUITE 201  
 SPRINGFIELD, ILLINOIS 62703  
 (217) 546-3400  
 ELGIN • SPRINGFIELD  
 PROJECT NUMBER: 12-06-0029-1 DATE: 12/13/07  
 DESIGNED: CHECKED: DRAWN:

EXISTING BRIDGE PLANS  
 SECTION (35) BR-2  
 IL 25 OVER WAUBONSEE CREEK  
 KENDALL COUNTY

PROJECT: FAU 2503 (35) BR-2 (Kendall) IL 25 OVER WAUBONSEE CREEK  
 DATE: 12/13/07  
 DRAWN BY: J.S.  
 CHECKED BY: J.S.  
 DESIGNED BY: J.S.