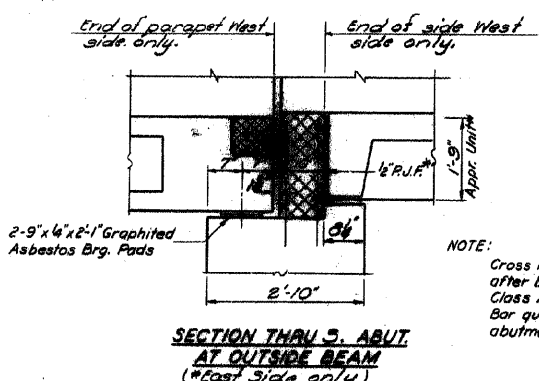
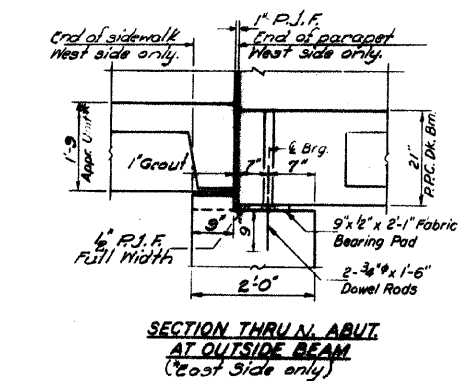
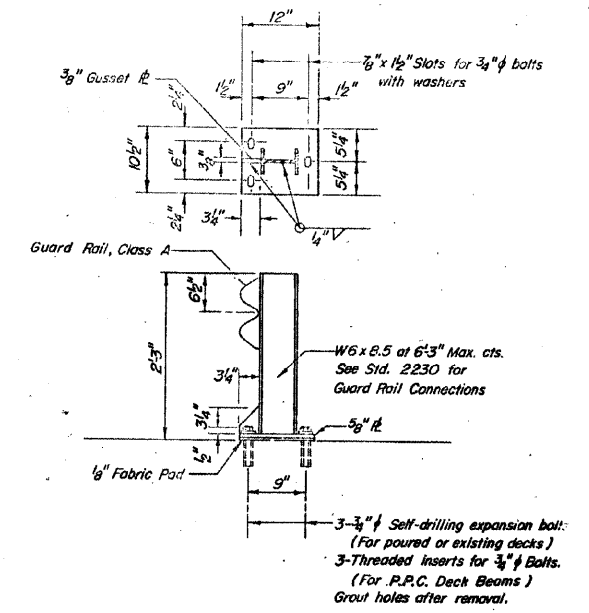
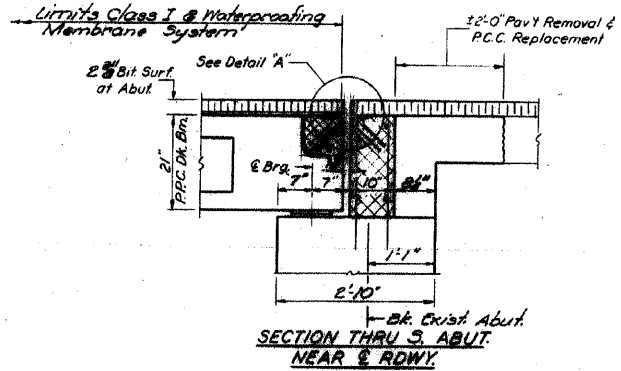
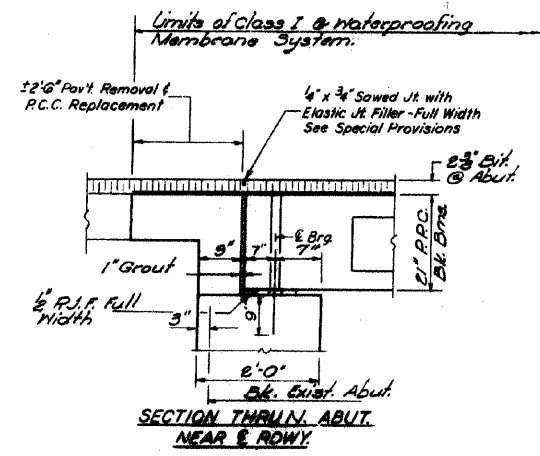


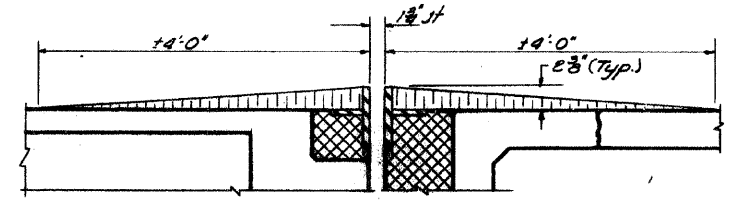
ADJUTE NO.	SECTION	COUNTY	FED. DIST. NO.	SHEET NO.
FAU 2503	(35)BR-2	KENDALL	129	54
FED. ROAD DIST. NO. 5		FED. AID PROJECT		

STATE OF ILLINOIS
DEPARTMENT OF TRANSPORTATION

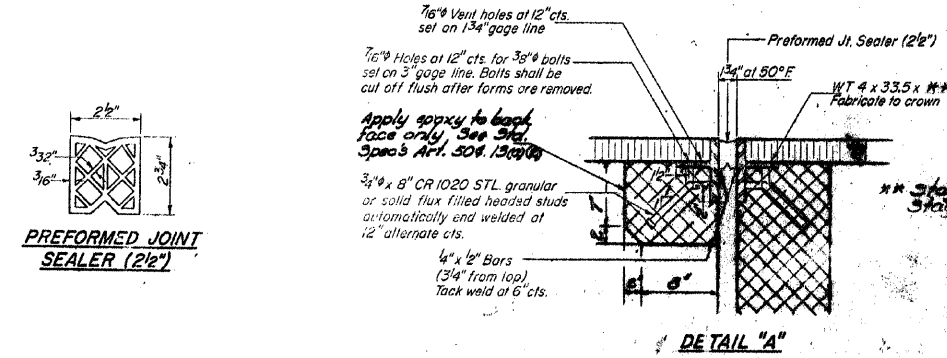
PROJECT NO.	SECTION	QUANTITY	SCALE	DATE	SHEET NO.
TEST BR	KENDALL	40	1/4"	1/9	9 SHEETS



NOTE:
Cross hatched area to be poured after beams are in place. Class X Concrete & Reinforcement Bar quantities are billed with the abutment.



DETAIL OF JT. AT SO. ABUT. FOR STAGE II
2 3/8" (Typ.)
Bit Surface placed during Stage I and removed during Stage III prior to installation of waterproofing membrane system. Cost of placement and removal incidental to P.P.C. Dk. Brms.



NOTE: Dimensions are at right angles. Hatched areas to be poured after beams have been erected and joints grouted. Ends of beams shall be aligned at the expansion joints. Any linear variation in the beam lengths shall be placed at the fixed joint. See End of Beam Detail for reinforcement.

DESIGNED John Schell	EXAMINED Paul J. ...
DRAWN J. SCHNELLER	PASSED
CHECKED	APPROVED

SA-D (8-19-71)

HAMPTON, LENZINI & RENWICK, INC.
CIVIL & STRUCTURAL ENGINEERS
3085 STEVENSON DRIVE, SUITE 201
SPRINGFIELD, ILLINOIS 62703
(217) 546-3400
ELGIN • SPRINGFIELD
PROJECT NUMBER: 12-06-0029-I DATE: 12/13/07
DESIGNED: CHECKED: DRAWN:

EXISTING BRIDGE PLANS
SECTION (35) BR-2
IL 25 OVER WAUBONSEE CREEK
KENDALL COUNTY

16029-shc-br-bridge plans.dgn 1/24/2008 8:35:19 AM