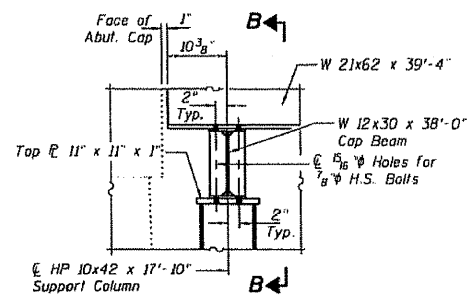


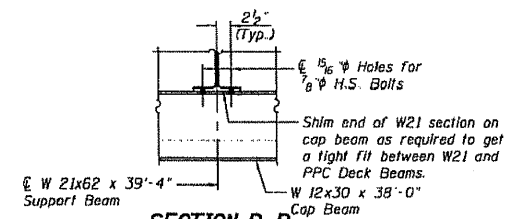
ROUTE NO. FAU 2503	SECTION (35)BR-2	COUNTY KENDALL	SHEET NO. 129	SHEET 59
FED. ROAD DIST. NO. 5		ILLINOIS KENDALL COUNTY		

STATE OF ILLINOIS
DEPARTMENT OF TRANSPORTATION

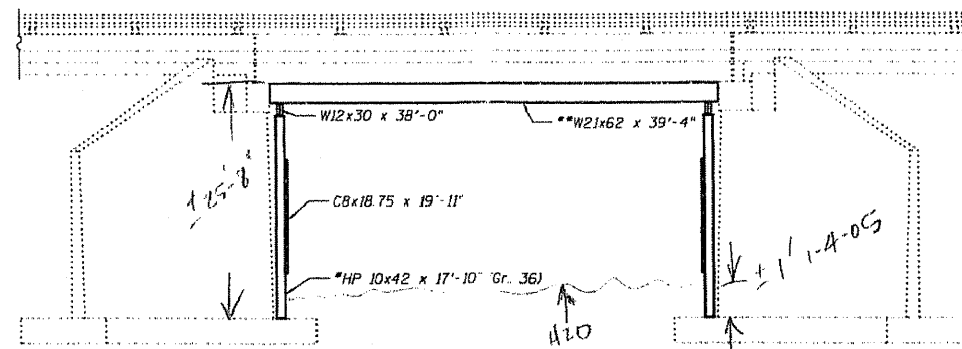
'AS BUILT'



END OF SUPPORT BEAM DETAIL



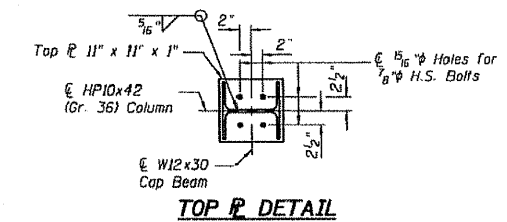
SECTION B-B



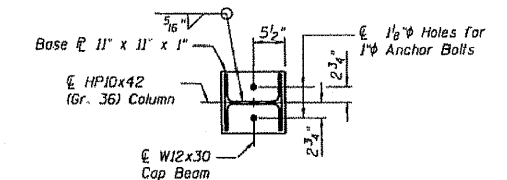
ELEVATION

**Contractor may substitute other readily available beam size. Beam shall be W21 or W24 and shall have a minimum $S_x=127 \text{ in}^3$. If grade 36 steel is used, a minimum $S_x=171 \text{ in}^3$ is required. If W24 section is used adjustment of the HP sections length will be required.

ROUTE NO. Kendall	SECTION	COUNTY	SHEET NO.
Kendall		Kendall	3 SHEETS

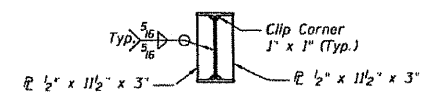


TOP P DETAIL



BASE P DETAIL

For Anchor Bolt details see Sheet 3 of 3.

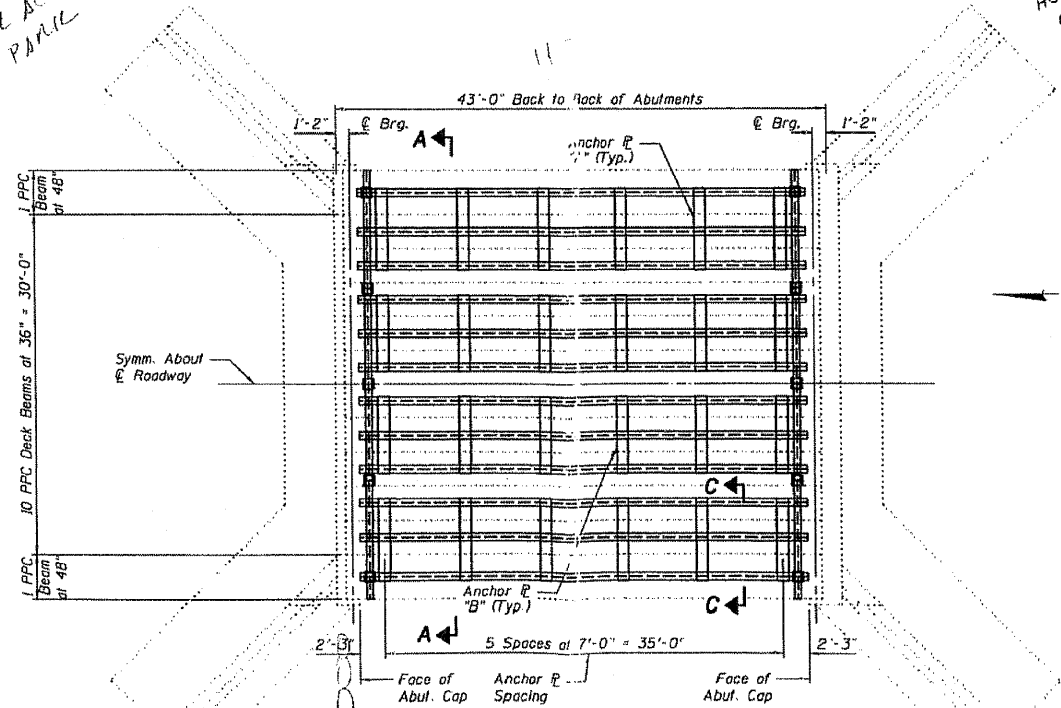


BEARING STIFFENER DETAIL

(Stiffeners are located on the cap beam above every support column) (20 P's required)



DESIGNED Wally S. Decker	EXAMINED John A. Morris
CHECKED Nick H. Decker	PASSED Ralph E. Anderson
DRAWN JSS	
CHECKED VHM	



PLAN

For Sections A-A and C-C see Sheet 2 of 3.

GENERAL NOTES

All structural steel shall conform to AASHTO Classification M-270 Gr. 50, unless otherwise noted.
 Calculated weight of new structural steel = 35,590 (Gr. 50) = 9680 (Gr. 36)
 Fasteners shall be high strength bolts. Bolts 7/8" φ, open holes 1 1/8" φ, unless otherwise noted.
 All new structural steel shall be shop painted with an inorganic zinc rich primer per AASHTO M300, Type 1.
 Plan dimensions and details relative to existing structure have been taken from existing plans and are subject to nominal construction variations. It shall be the Contractor's responsibility to verify such dimensions and details in the field and make necessary approved adjustments prior to construction or ordering of materials. Such variations shall not be cause for additional compensation for a change in the scope of the work, however, the Contractor will be paid for the quantity actually furnished at the unit price bid for the work.

TOTAL BILL OF MATERIAL

ITEM	UNIT	QUANTITY
Furnishing and Erecting Structural Steel	Pound	45670

12000 = 22835

PLAN, ELEVATION AND DETAILS

F.A.S. RT. 106 OVER
WAUBONSEE CREEK
KENDALL COUNTY
SN 047-0034

1200
PAVING LOT
(NO ACCESS)
POSSIBLE MOT'L STORAGE

POSSIBLE
CUTBACK ACCESS
(NO ACCESS)

HOUSE
(NO ACCESS)

OLD
WALL

JE 2-9-05

HAMPTON, LENZINI & RENWICK, INC.
CIVIL & STRUCTURAL ENGINEERS

3085 STEVENSON DRIVE, SUITE 201
SPRINGFIELD, ILLINOIS 62703
(217) 546-3400

ELGIN • SPRINGFIELD

PROJECT NUMBER: 12-06-0029-1 DATE: 12/13/07
DESIGNED: CHECKED: DRAWN:

AS-BUILT BRIDGE PLANS
SECTION (35) BR-2
IL 25 OVER WAUBONSEE CREEK
KENDALL COUNTY