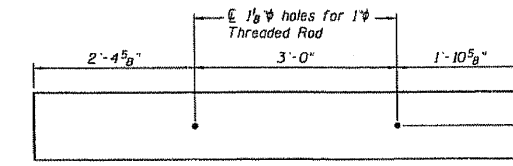
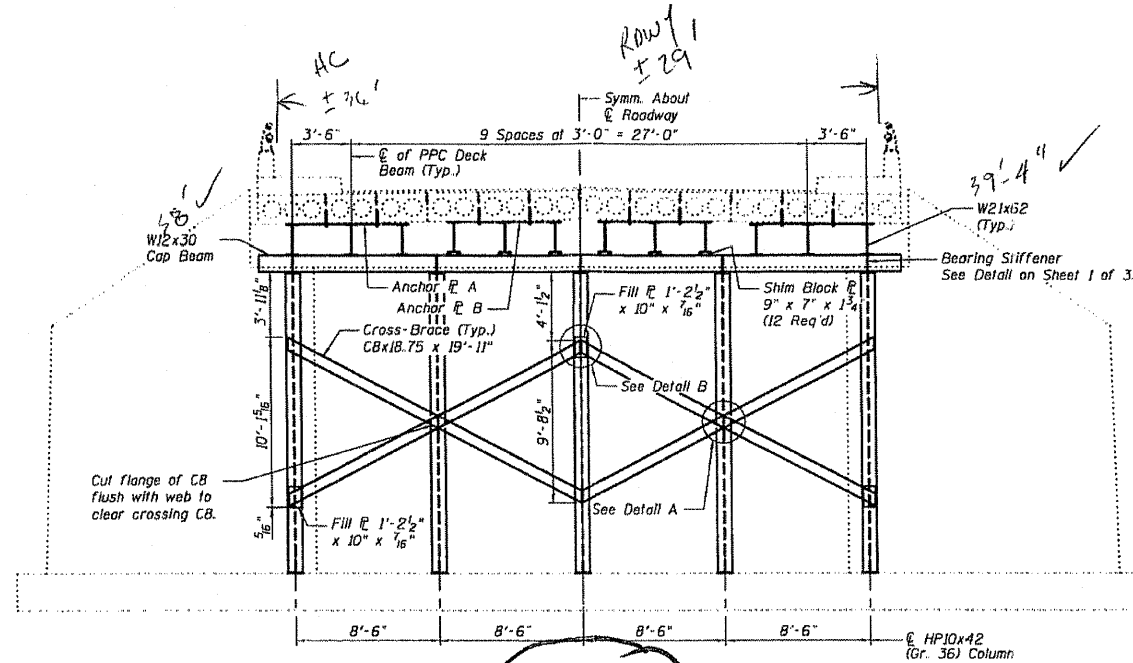
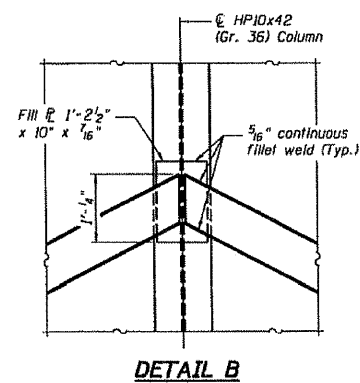
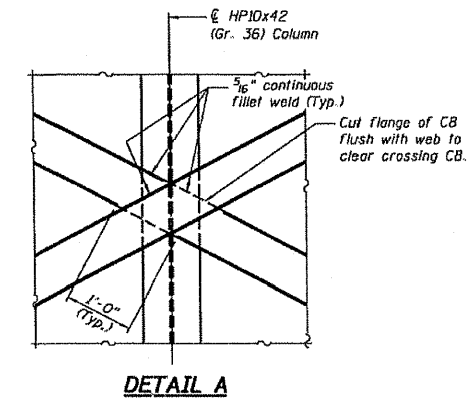


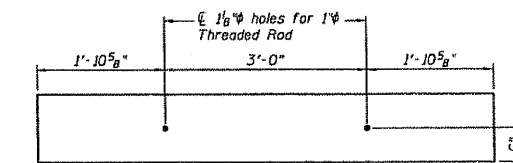
ROUTE NO. FAU 2503	SECTION (35)BR-2	COUNTY KENDALL	SHEET NO. 129	TOTAL SHEETS 60
FED. ROAD DIST. NO. 5		ILL. PROJ. NO. KENDALL PROJECT		

DATE	BY	CHKD.	APP'D.	REV.
Kendall				
SHEET NO. 2 3 SHEETS				

STATE OF ILLINOIS  
DEPARTMENT OF TRANSPORTATION



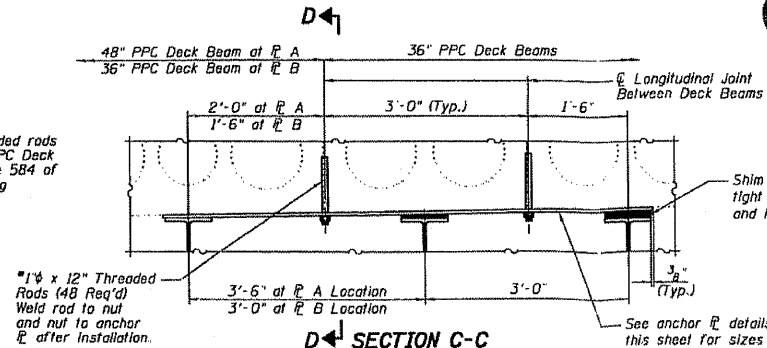
**ANCHOR PLATE A**  
7'-3 1/4" x 1'-0" x 1/2"  
(12 Required)



**ANCHOR PLATE B**  
6'-9 1/4" x 1'-0" x 1/2"  
(12 Required)

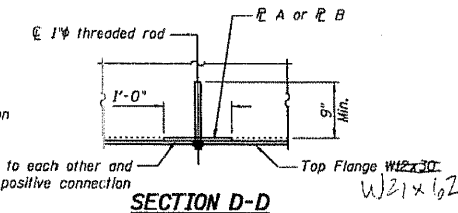
SEE REVISED SECTION A-A (ATTACHED)

\*Drill and epoxy grout 1" threaded rods a minimum of 9" into existing PPC Deck Beam Joints according to Article 584 of the Standard Specifications using the Anchor R's as a template.



**TYPICAL ANCHOR SHIM AND SHIM DETAIL**

Contractor to provide shims at all longitudinal beam joints, in the dimensions of 1'-4" x 1'-0", of the required thickness between the W21x62 and the bottom of the PPC Deck Beams. Shims to be centered on all longitudinal beams. Thickness varies from 0" at the fascia beam to +3/2" at the E of Roadway.



**SECTION D-D**

DESIGNED	J.S.B.
CHECKED	V.H.V.
DRAWN	Drew Christopher
CHECKED	J.S.B. V.H.V.

December 10, 2004  
 EXAMINED *John A. Morris*  
 CHIEF ENGINEER OF STRUCTURAL SERVICES  
 PASSED *Ralph E. Anderson*  
 ENGINEER OF BRIDGES AND STRUCTURES

**ABUTMENT ELEVATION AND DETAILS**  
**F.A.S. RT. 106 OVER**  
**WAUBONSEE CREEK**  
**KENDALL COUNTY**  
**SN 047-0034**

C:\Projects\VB\0470034.dgn 12/10/2004 11:31:00 AM

**HAMPTON, LENZINI & RENWICK, INC.**  
 CIVIL & STRUCTURAL ENGINEERS

**HLR**

3085 STEVENSON DRIVE, SUITE 201  
 SPRINGFIELD, ILLINOIS 62703  
 (217) 546-3400

ELGIN • SPRINGFIELD

PROJECT NUMBER: 12-06-0029-1      DATE: 12/10/07  
 DESIGNED:      CHECKED:      DRAWN:

**AS-BUILT BRIDGE PLANS**  
 SECTION (35) BR-2  
 IL 25 OVER WAUBONSEE CREEK  
 KENDALL COUNTY