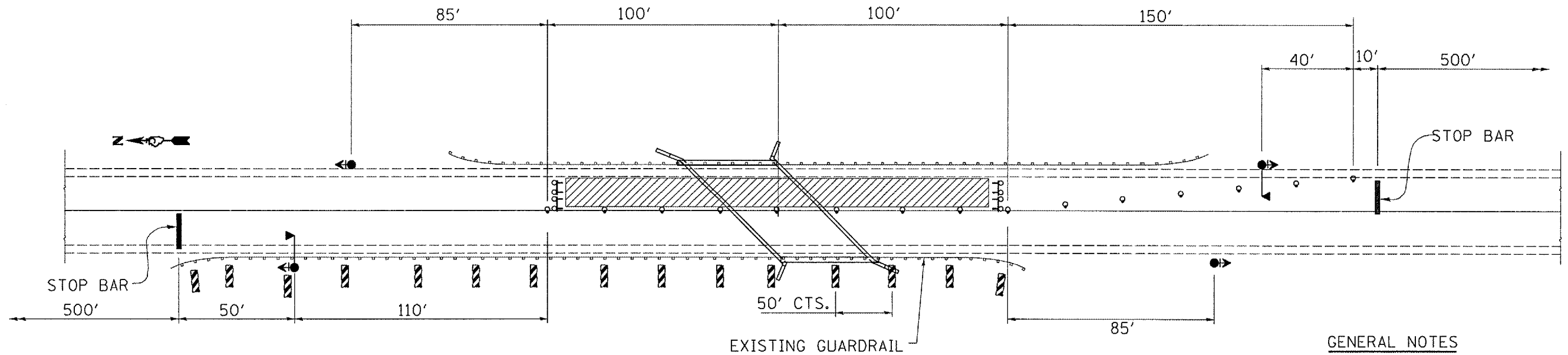
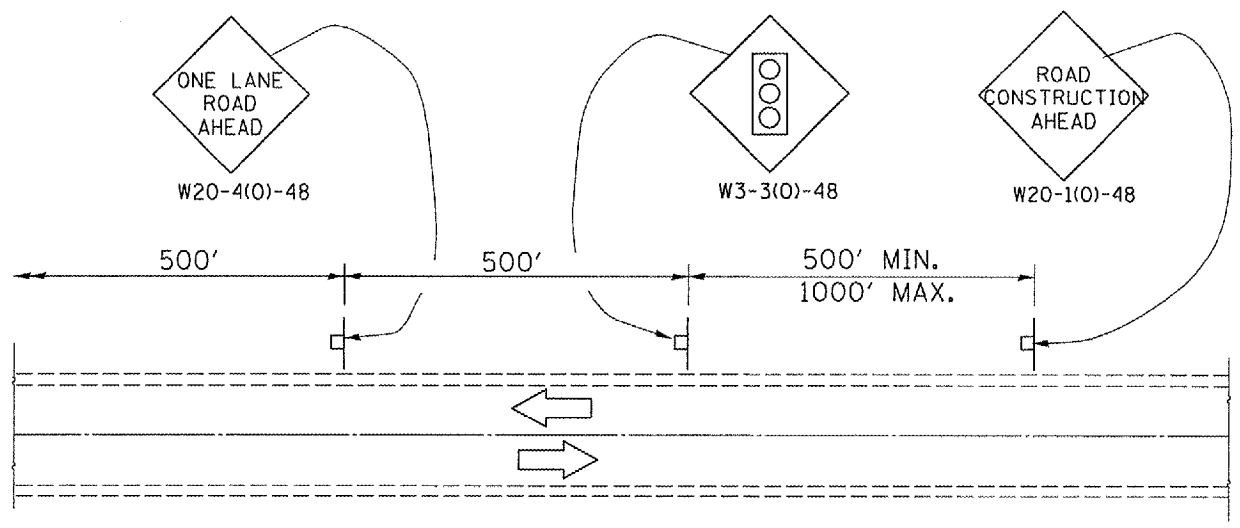


**CROSS SECTION**  
LOOKING NORTH



**GENERAL NOTES**

THIS DETAIL SHALL BE USED WHERE, AT ANY TIME, ANY VEHICLE, EQUIPMENT, WORKERS, OR THEIR ACTIVITIES WILL ENCR OACH ON ONE LANE OF A 2L, 2W HIGHWAY OR BRIDGE. TRAFFIC SIGNALS SHALL BE REQUIRED. THIS DETAIL SHALL BE USED IN CONJUNCTION WITH TRAFFIC CONTROL AND PROTECTION STANDARD 701316.

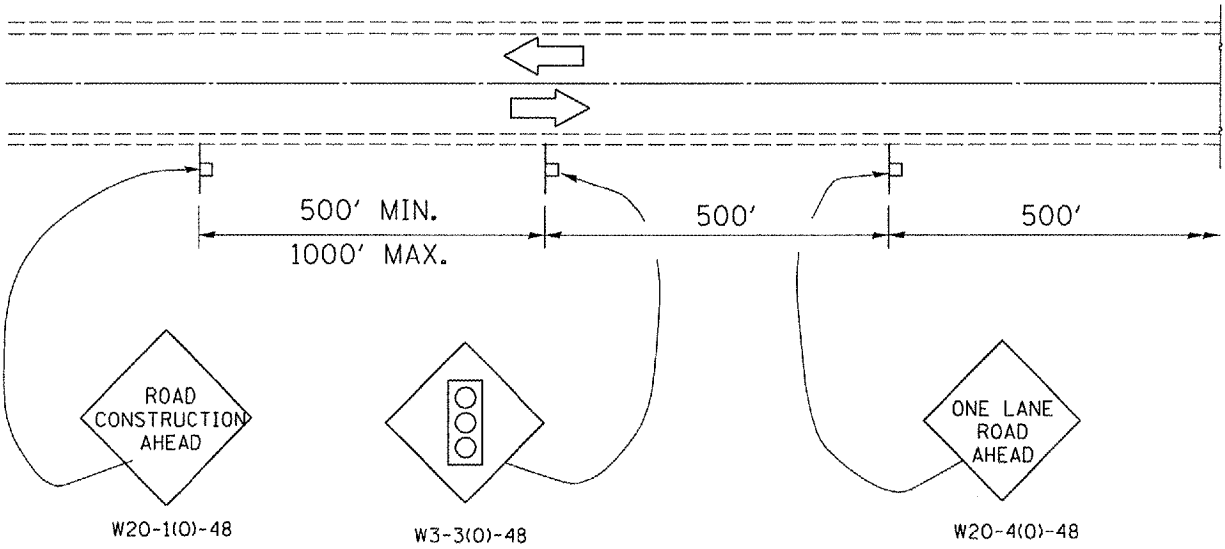
WHEN TRAFFIC SIGNALS ARE NOT IN OPERATION, FLAGGERS SHALL BE USED AND TRAFFIC CONTROL SHALL CONFORM TO TRAFFIC CONTROL AND PROTECTION STANDARDS 701201 OR 701206.

BI-DIRECTIONAL LIGHTS SHALL BE USED AT NIGHT ALONG THE CENTERLINE WHERE THE WORK AREA IS SEPERATED FROM THE TRAVEL LANE USING DRUMS. MONODIRECTIONAL LIGHTS SHALL BE USED AT NIGHT ON ALL OTHER DRUMS.

EXISTING OR TEMPORARY PAVEMENT MARKING SHALL BE ON BOTH SIDES OF THE OPEN LANE FROM STOP BAR TO STOP BAR.

**SYMBOLS**

- Work area
- Sign
- Type III barricade with steady burning light
- Drum with steady burning light
- Traffic signal with back plate
- Double vertical panel
- Microwave Detector



FILE NAME =	USER NAME = vaninger_jr	DESIGNED -	REVISED -
c:\projects\mchd07\18468866\18450866.dgn		DRAWN -	REVISED -
		CHECKED -	REVISED -
		DATE -	REVISED -

STATE OF ILLINOIS  
DEPARTMENT OF TRANSPORTATION

**STAGING DETAILS**

SCALE: SHEET NO. 5 OF 5 SHEETS STA. TO STA.

F.A.P. RTE.	SECTION	COUNTY	TOTAL SHEETS	SHEET NO.
796	(104B)I	KANKAKEE	12	5
CONTRACT NO. 66759				
FED. ROAD DIST. NO. ILLINOIS FED. AID PROJECT				