

F.A.S. RTE.	SECTION	COUNTY	TOTAL SHEETS	SHEET NO.
1249	23RS-6	BUREAU	6	1
FED. ROAD DIST. NO.	ILLINOIS	CONTRACT NO. 66760		

STATE OF ILLINOIS  
DEPARTMENT OF TRANSPORTATION  
DIVISION OF HIGHWAYS

**PROPOSED  
HIGHWAY PLANS**

FAS ROUTE 1249 (US 34)  
SECTION 23RS-6

BUREAU COUNTY  
C-93-050-08  
MILLING AND RESURFACING

INDEX OF SHEETS

- COVER SHEET
- GENERAL NOTES
- SUMMARY OF QUANTITIES
- TYPICAL SECTIONS
- PLAN VIEW
- TYPICAL PAVEMENT MARKING

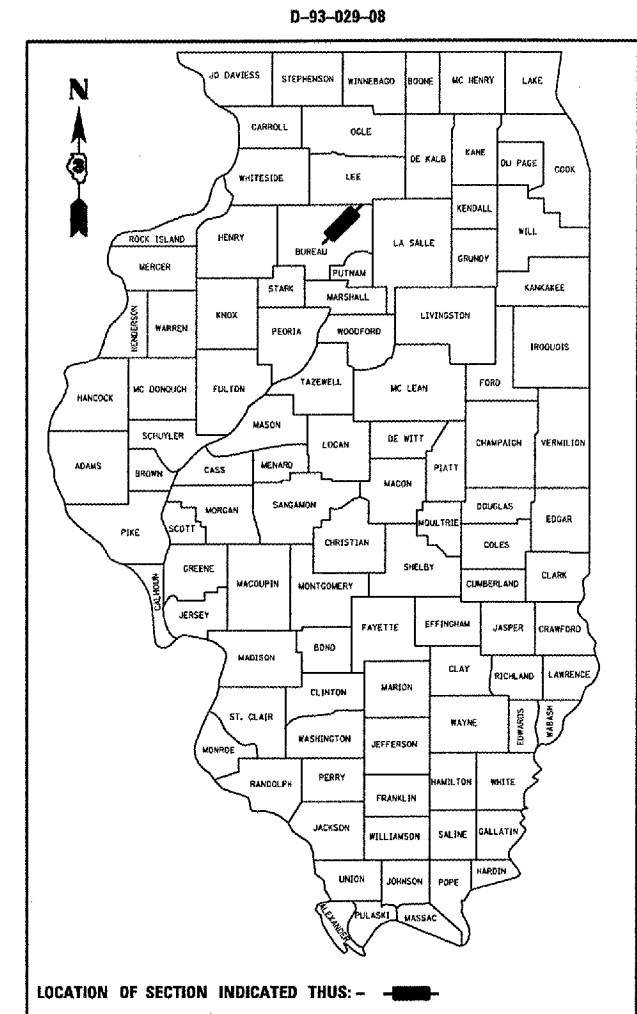
STANDARDS

- 000001-05 STANDARD SYMBOLS, ABBREVIATIONS AND PATTERNS
- 001006 DECIMAL OF AN INCH AND OF A FOOT
- 701001-01 OFF-ROAD OPERATIONS 2L, 2W, MORE THAN 4.5 m (15') AWAY
- 701006-02 OFF-ROAD OPERATIONS 2L, 2W, 4.5 m (15') TO 600 mm (24") FROM PAVEMENT EDGE
- 701011-01 OFF-ROAD MOVING OPERATIONS 2L, 2W, DAY ONLY
- 701301-02 LANE CLOSURE, 2L, 2W, SHORT TIME OPERATIONS
- 701306-01 LANE CLOSURE, 2L, 2W, SLOW MOVING OPERATIONS DAY ONLY, FOR SPEEDS  $\geq$  45 MPH
- 701311-02 LANE CLOSURE, 2L, 2W, MOVING OPERATIONS - DAY ONLY
- 701901 TRAFFIC CONTROL DEVICES

MICROFILMED \_\_\_\_\_  
REEL NUMBER \_\_\_\_\_  
AWARDED \_\_\_\_\_  
RESIDENT ENGINEER \_\_\_\_\_  
AS BUILT CHANGES WERE MADE  
ON THE FOLLOWING SHEETS \_\_\_\_\_

J.U.L.I.E.  
JOINT UTILITY LOCATION INFORMATION FOR EXCAVATION  
1-800-892-0123

DISTRICT 3 NO. (815) 434-6131  
PROJECT ENGINEER: JOE KANNEL  
UNIT CHIEF: RON WOODSHANK  
TOWNSHIP: BERLIN  
CONTRACT NO. 66760



FUNCTIONAL CLASSIFICATION  
RURAL - MAJOR ARTERIAL  
F.A.S. ROUTE 1249 (US 34)  
2005 ADT = 1250  
P.V. = 91.2% M.U. = 4.8% S.U. = 4.0%

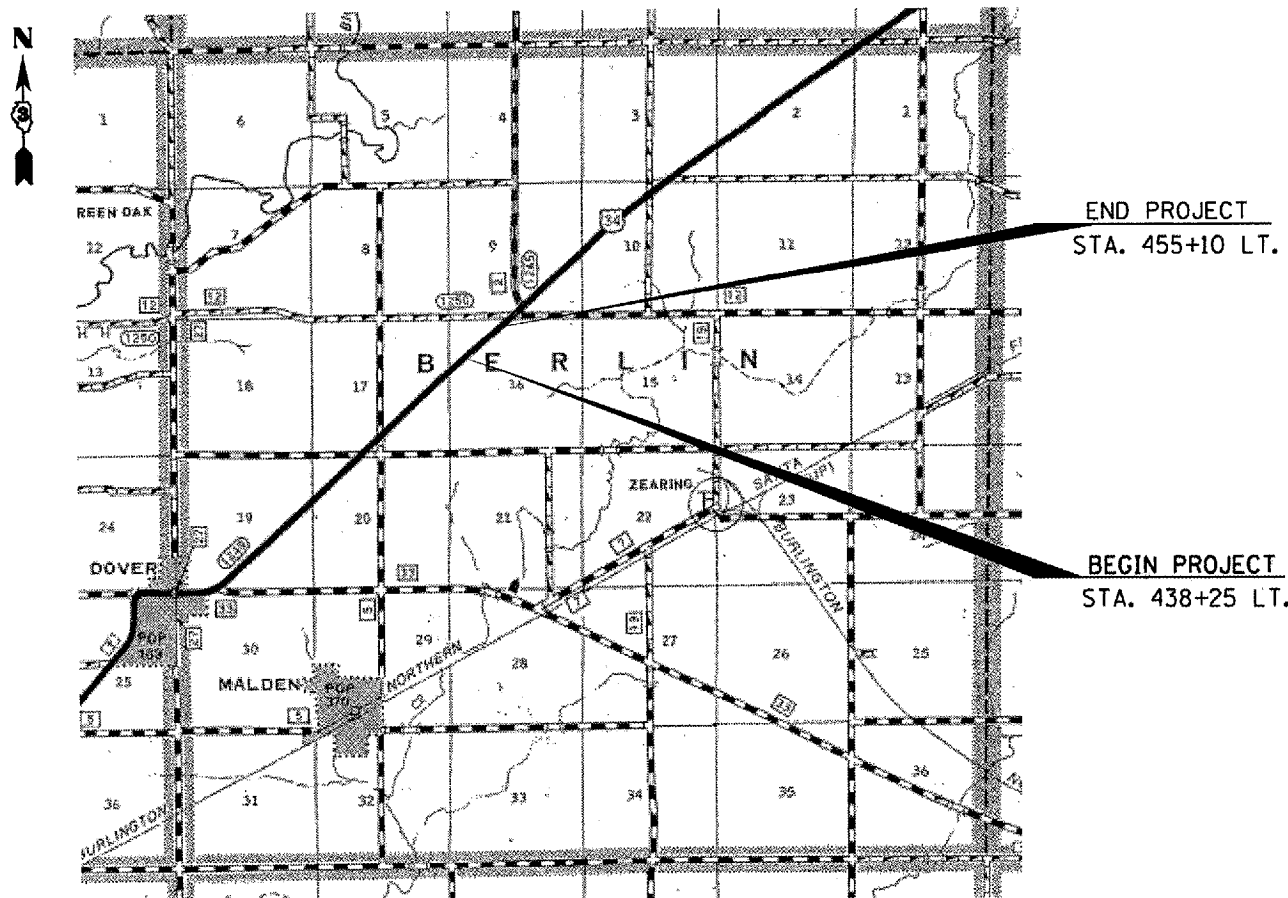
STATE OF ILLINOIS  
DEPARTMENT OF TRANSPORTATION  
DIVISION OF HIGHWAYS

SUBMITTED 2/15 2008  
*George Ryan*  
DEPUTY DIRECTOR OF HIGHWAYS, REGION ENGINEER

March 21 2008  
*Eric E. Harm*  
ENGINEER OF DESIGN AND ENVIRONMENT

March 21 2008  
*Christine M. Reed*  
DIRECTOR OF HIGHWAYS, CHIEF ENGINEER

PRINTED BY THE AUTHORITY  
OF THE STATE OF ILLINOIS



LOCATION MAP  
NOT TO SCALE

GROSS LENGTH OF PROJECT: 1685 FT. = 0.32 MILES  
NET LENGTH OF PROJECT: 1685 FT. = 0.32 MILES

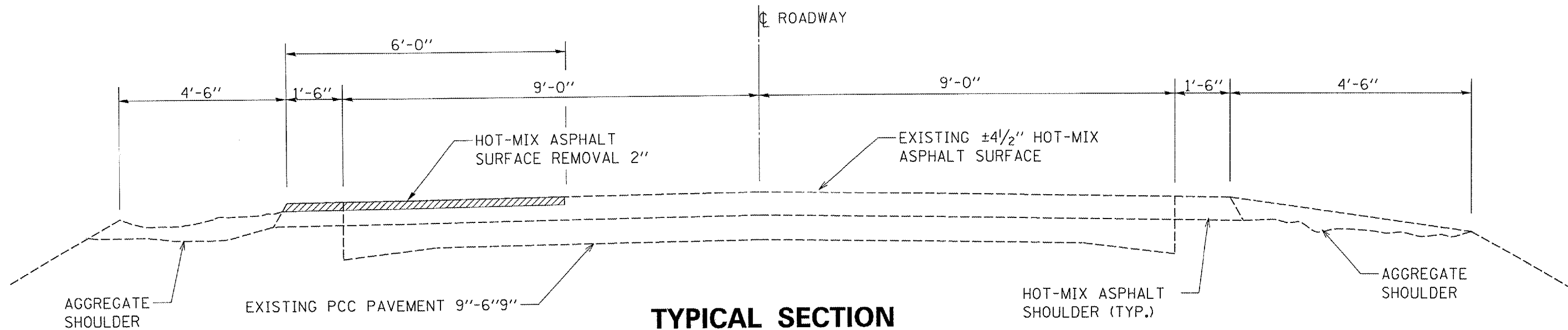


# SUMMARY OF QUANTITIES

CONSTRUCTION CODE TYPE: I000

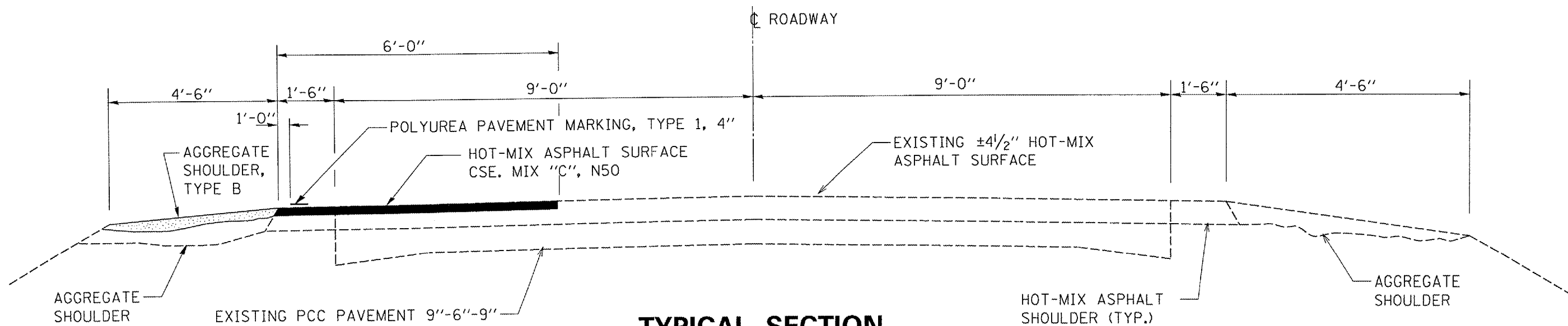
RURAL  
100% STATE  
TOTAL  
QUANTITY

CODE NO.	ITEM	UNIT	RURAL 100% STATE TOTAL QUANTITY
40600100	BITUMINOUS MATERIALS (PRIME COAT)	GALLON	90
40603310	HOT-MIX ASPHALT SURFACE COURSE, MIX "C", N50	TON	126
44000157	HOT-MIX ASPHALT SURFACE REMOVAL, 2"	SQ YD	1124
48101200	AGGREGATE SHOULDERS, TYPE B	TON	100
67100100	MOBILIZATION	L SUM	1
70100460	TRAFFIC CONTROL AND PROTECTION, STANDARD 701306	L SUM	1
78008210	POLYUREA PAVEMENT MARKING TYPE I - LINE 4"	FOOT	1685



**TYPICAL SECTION  
EXISTING**

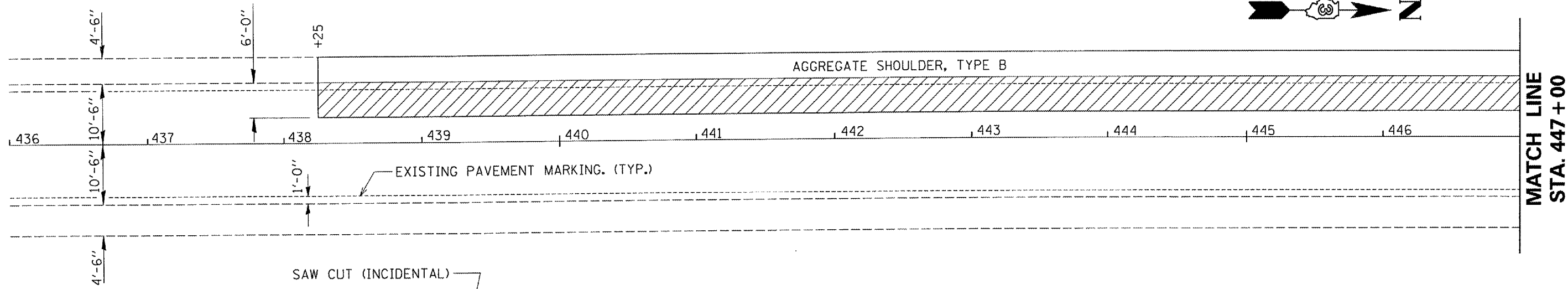
STA. 438+25 LT. TO STA. 455+10 LT.



**TYPICAL SECTION  
PROPOSED**

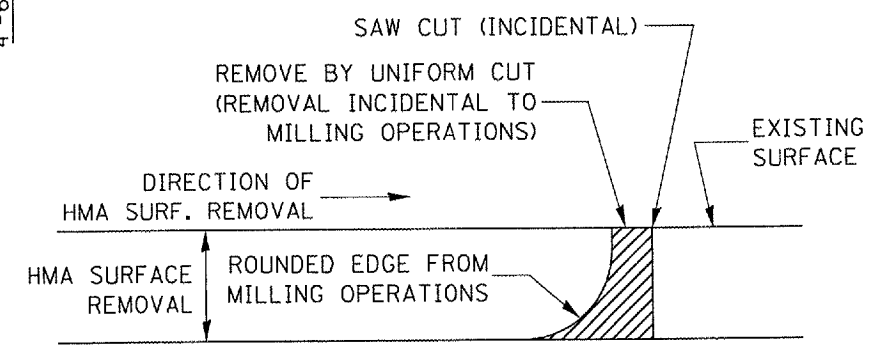
STA. 438+25 LT. TO STA. 455+10 LT.

FILE NAME = c:\projects\maha07\rt134\dover\1-r134.dgn	USER NAME = vaningerjr	DESIGNED - RON WOODSHANK	REVISED -	STATE OF ILLINOIS DEPARTMENT OF TRANSPORTATION	TYPICAL SECTION	F.A.S. RTE. 1249	SECTION 23RS-6	COUNTY BUREAU	TOTAL SHEETS 6	SHEET NO. 4
	PLOT SCALE = 1/8" = 1' IN.	CHECKED -	REVISED -			SCALE: _____	SHEET NO. ___ OF ___ SHEETS	STA. 438+25 LT. TO STA. 455+10 LT.	CONTRACT NO. 66760	
PLOT DATE = Feb 11, 2008 - 11:00:12 AM	DATE -	DATE -	REVISED -				FED. ROAD DIST. NO. - ILLINOIS STATE AID PROJECT			



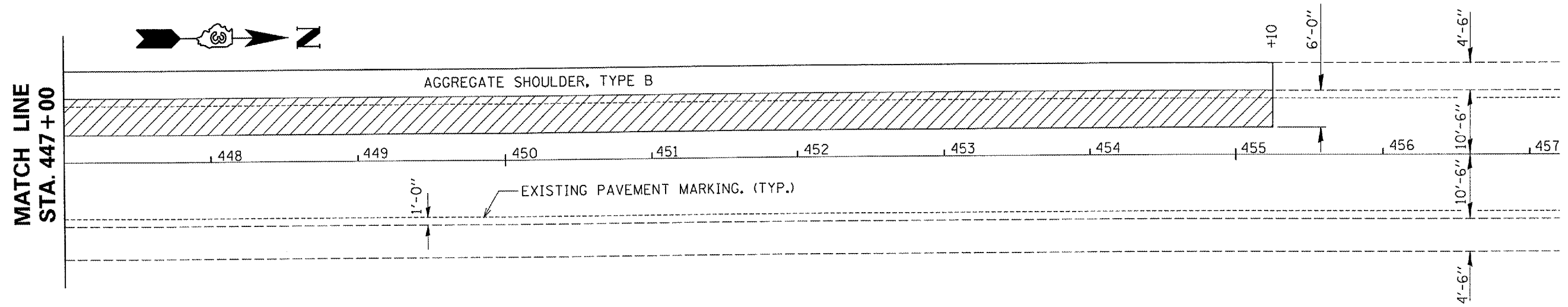
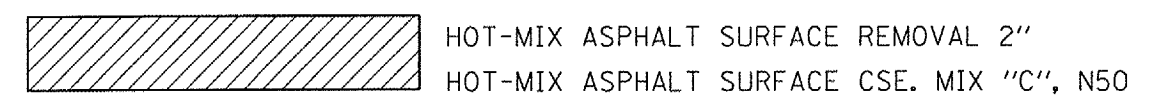
MATCH LINE  
STA. 447 + 00

**PLAN**



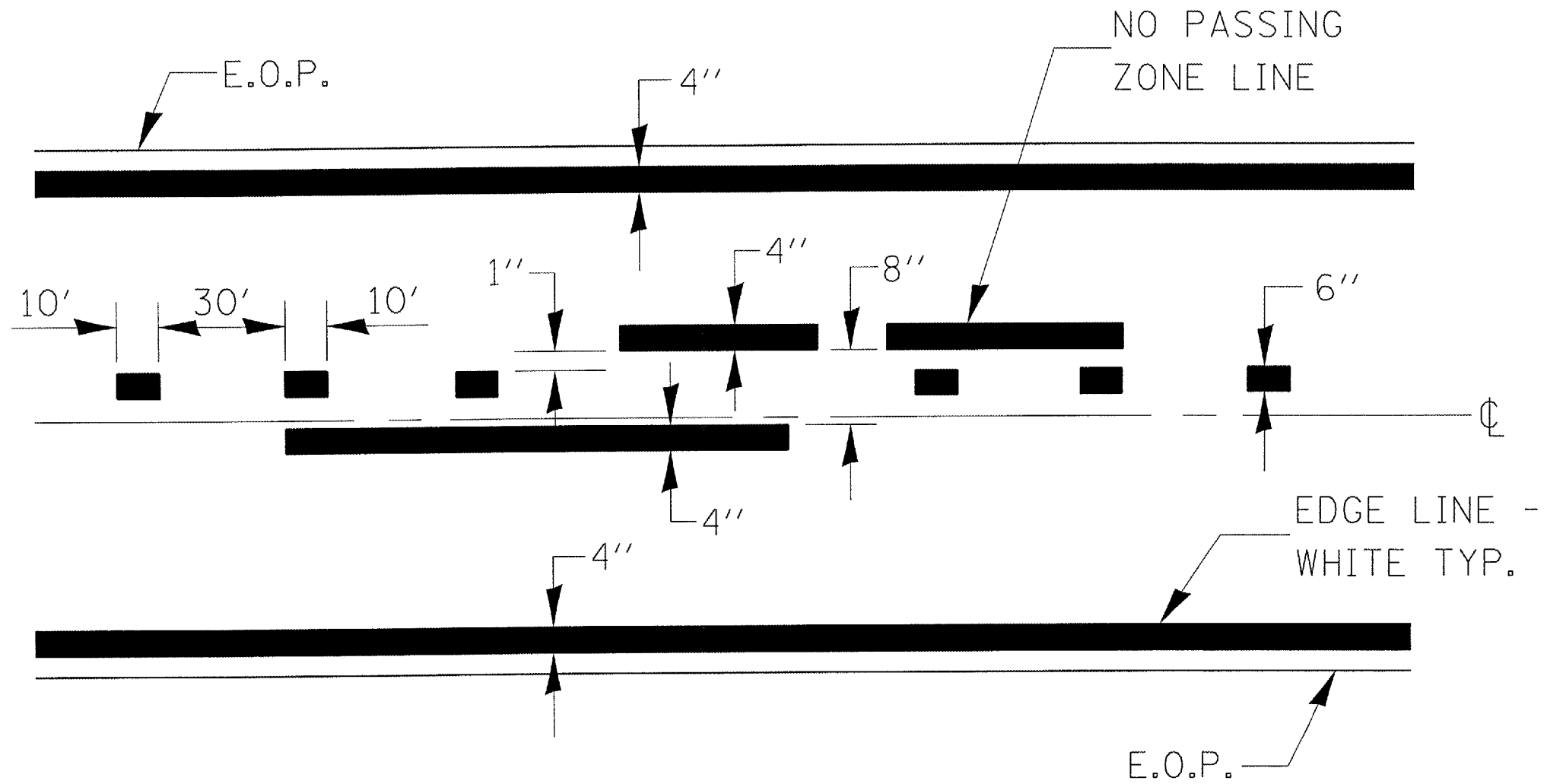
**NOTE:**  
WHEN MILLING OPERATIONS PRODUCE A ROUNDED EDGE,  
THEN A SAW CUT SHALL BE USED TO MANUFACTURE  
A PERPENDICULAR EDGE AS SHOWN IN THE DETAIL.  
THE ENGINEER SHALL BE THE SOLE JUDGE  
CONCERNING THE USE OF THIS DETAIL

**HMA DETAIL AT BUTT JOINTS**



**PLAN**

FILE NAME = c:\projects\mohd07\134(dover)\134.dgn	USER NAME = veninger jr	DESIGNED - RON WOODSHANK	REVISED -	<b>STATE OF ILLINOIS DEPARTMENT OF TRANSPORTATION</b>	<b>PLAN VIEW</b>	F.A.S. RTE. 1249	SECTION 23RS-6	COUNTY BUREAU	TOTAL SHEETS 6	SHEET NO. 5
	PLOT SCALE = 1/8" = 1' IN.	CHECKED -	REVISED -			CONTRACT NO. 66760				
	PLOT DATE = Feb 11, 2008 - 11:00:24 AM	DATE -	REVISED -			FED. ROAD DIST. NO. - [ILLINOIS] STATE AID PROJECT				



CENTERLINE & NO PASSING  
ZONE LINES - YELLOW

(SEE TYPICAL SECTIONS)

# PAVEMENT MARKING

FILE NAME = c:\projects\mchd07\rt34(dover)\r-t34.dgn	USER NAME = vansingerjr	DESIGNED - RON WOODSHANK	REVISED - ---	<b>STATE OF ILLINOIS DEPARTMENT OF TRANSPORTATION</b>	<b>PLAN VIEW</b>		F.A.S. RTE. 1249	SECTION 23RS-6	COUNTY BUREAU	TOTAL SHEETS 6	SHEET NO. 6	
PLOT SCALE = 10:1.4029" / IN.		DRAWN - RON WOODSHANK	REVISED - ---		SCALE: _____	SHEET NO. ___ OF ___ SHEETS	STA. 438+25 LT. TO STA. 455+10 LT.	CONTRACT NO. 66760				
PLOT DATE = Feb 11, 2008 - 11:00:33 AM		CHECKED - ---	REVISED - ---		FED. ROAD DIST. NO. _____ ILLINOIS STATE AID PROJECT							
		DATE - -----	REVISED - ---									