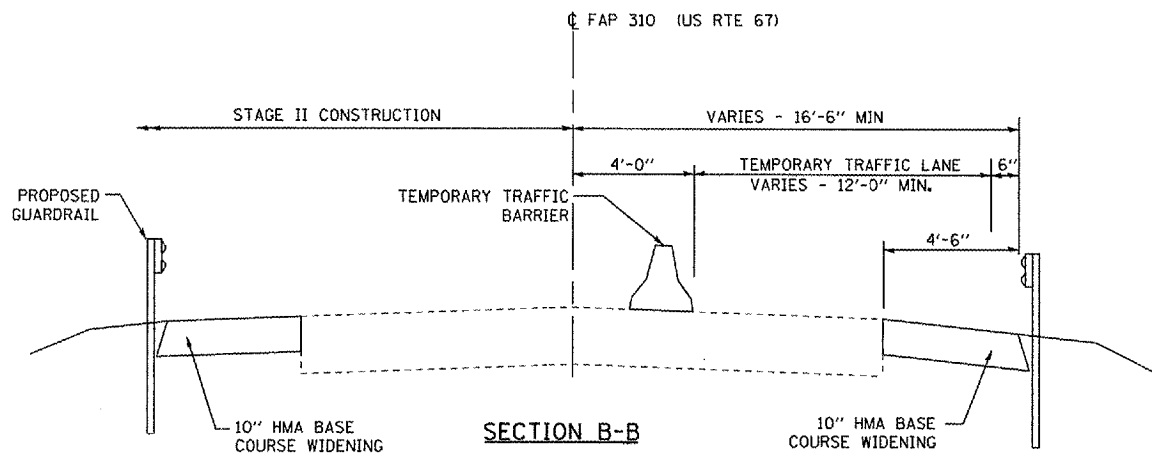
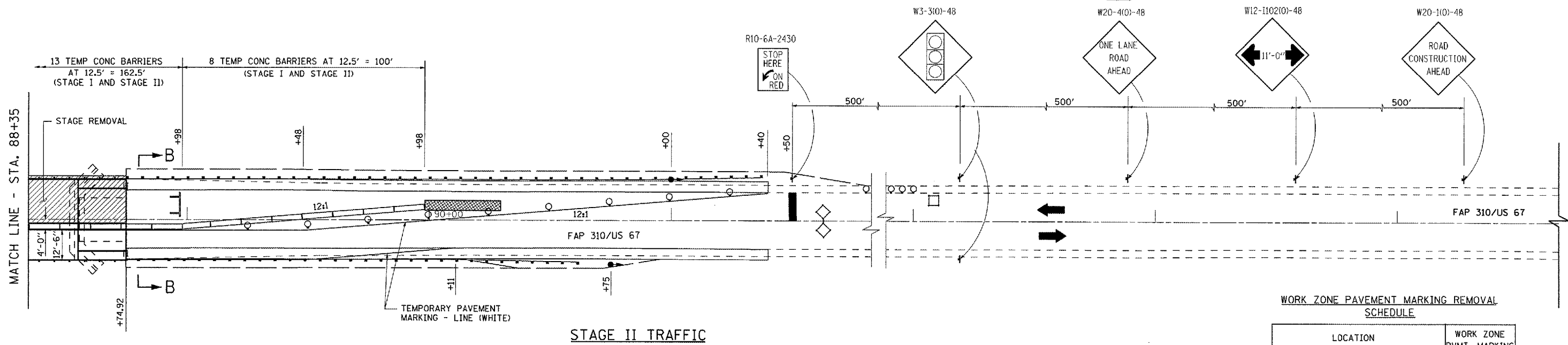
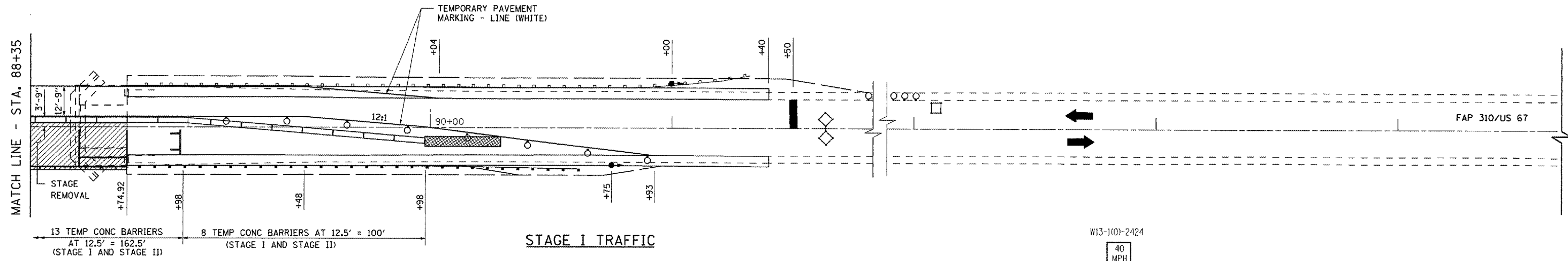


F.A.P. RTE.	SECTION	COUNTY	TOTAL SHEETS	SHEET NO.
310	(39B)	MCDONOUGH	38	9
STA.		TO STA.		
FED. ROAD DIST. NO.		ILLINOIS FED. AID PROJECT		



**WORK ZONE PAVEMENT MARKING REMOVAL SCHEDULE**

LOCATION STATION TO STATION	WORK ZONE PVMT. MARKING REMOVAL (SQ. FT.)
<b>STAGE I</b>	
STA. 86+30 TO STA. 90+04 LT	125
STA. 84+95 TO STA. 90+93 RT	200
<b>STAGE II</b>	
STA. 84+85 RT	24
STA. 91+50 LT	24
STA. 86+28 TO STA. 90+11 RT	128
STA. 85+37.5 TO STA. 91+40 LT	201
<b>SHORT TERM @</b>	
STA. 84+85 TO STA. 91+50	45
<b>TOTAL</b>	<b>747</b>

**TRAFFIC CONTROL SCHEDULE**

LOCATION STATION TO STATION	TEMP. CONC. BARRIER (FOOT)	RELOCATE TEMP. CONC. BARRIER (FOOT)	IMPACT ATTENUATORS TEMPORARY (FRN) TL3 (EACH)	IMPACT ATTENUATORS RELOCATE (FD) TL3 (EACH)
<b>STAGE I</b>				
STA. 86+35.5 TO 89+98	362.5		2	
<b>STAGE II</b>				
STA. 86+35.5 TO 89+98		362.5		2
<b>TOTAL</b>	<b>362.5</b>	<b>362.5</b>	<b>2</b>	<b>2</b>

**LEGEND**

- WORK AREA
- IMPACT ATTENUATOR
- SIGN
- TYPE III BARRICADE
- DRUM WITH STEADY BURNING LIGHT
- DOUBLE VERTICAL PANEL
- TRAFFIC SIGNAL
- INDUCTION LOOP DETECTOR
- TEMPORARY CONCRETE BARRIER

WORK THIS SHEET WITH SHEET 8 OF 38



REVISIONS	
NAME	DATE

ILLINOIS DEPARTMENT OF TRANSPORTATION  
**TRAFFIC CONTROL PLAN - STAGE I AND II**  
**US 67 OVER TROUBLESOME CREEK**  
**FAP 310 SECTION (39B)**  
**MCDONOUGH COUNTY**  
 SCALE: 1"=20'  
 DATE DEC 2007  
 DRAWN BY GEW  
 CHECKED BY MJS

THIS PROJECT WAS DESIGNED BY THEUPCHURCH GROUP, INC. ON 12/22/2007  
 FILE NAME: P:\PROJECTS\310\39B\TrafficControl\StageIandII.dwg