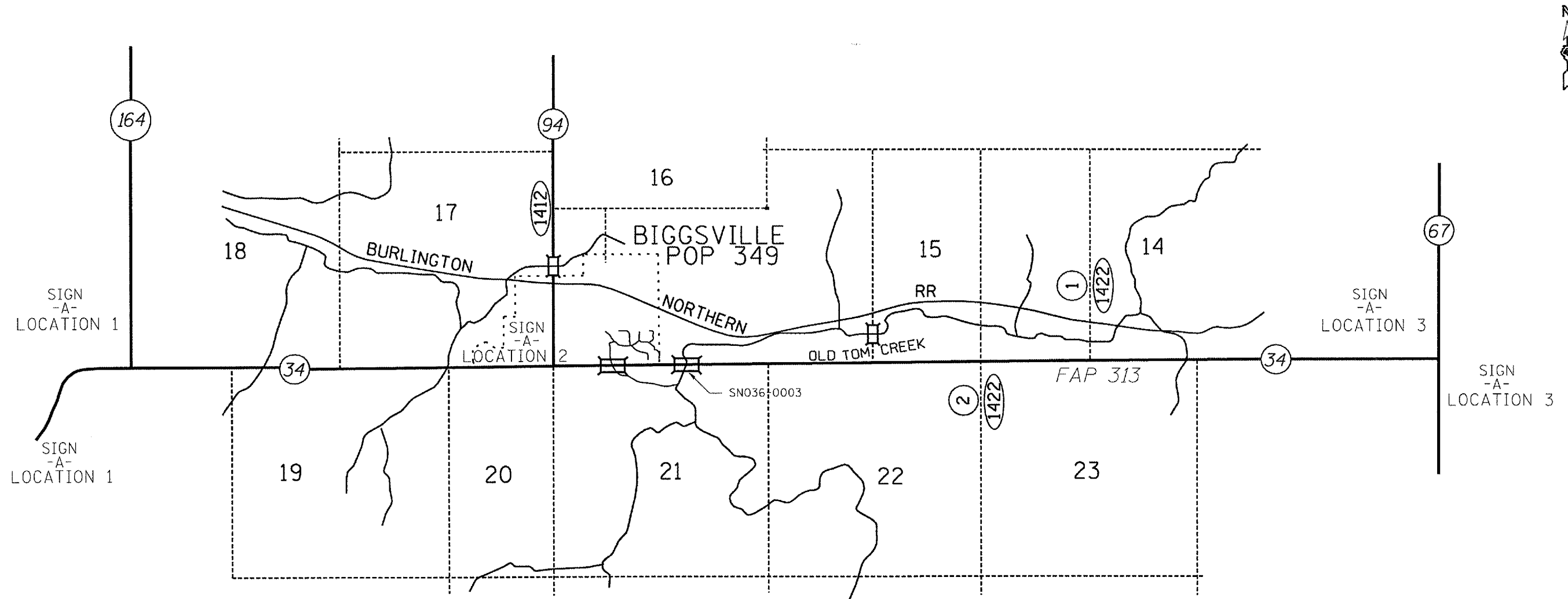


F.A.P. RTE.	SECTION	COUNTY	TOTAL SHEETS	SHEET NO.
313	6811	HENDERSON	15	12
STA. 625+30.00 TO STA. 625+73.00				
FED. ROAD DIST. NO. 4 ILLINOIS FED. AID PROJECT				

NOTES
 Notification signs shall be posted where necessary indicating maximum width ahead of 10'-3" and Changeable Message Boards for traffic from both directions placed one week prior to work start date for public safety and awareness.



SN.036-0003 SIGNING DISTANCES

	SIGN -A-	SIGN -B-
LOCATION 1	2 EA.	NA
LOCATION 2	1 EA.	
LOCATION 3	2 EA.	
LOCATION 4		

CONTRACTOR PROVIDED MAX. WIDTH
XX-XX
XX MILES SIGN -A-
 IDOT PROVIDED IL. 34

SN.036-0003 US.34
 over Old Tom Crk.

REVISIONS	
NAME	DATE

ILLINOIS DEPARTMENT OF TRANSPORTATION
**WIDTH RESTRICTION
 SIGNING**
 SCALE: VERT. _____
 HORIZ. _____
 DATE: 01-10-2008
 DRAWN BY: CEJ
 CHECKED BY: _____

SEE SPECIAL PROVISIONS FOR SIGNING DETAILS.

DATE: 08-18-07
 FILE: IAS\GENOR\F\ASTON\PLANS\SLA01\BRIDGE Contract\Emergency\PC\Bea\Repa\169771_SN036-0003\034overTomCrk.dgn
 SCALE: 1"=40'
 SHEET: 12