

DESIGNER: CLARK JONES
PHONE: (309)671-3452

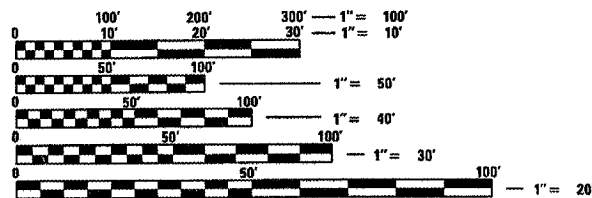
PROJECT ENGINEER: JIM MILLER
PHONE: (309)671-3451

INDEX OF SHEETS:

1. COVER SHEET
2. COMMITMENTS & GENERAL NOTES
- 3-4. SUMMARY OF QUANTITIES
5. TYPICAL SECTIONS
6. SCHEDULE OF QUANTITIES
- 7-8. PLATS
9. GENERAL LAYOUT
10. PROPOSED SHLDR.REM.& REPL.
11. TRAFFIC CONTROL
12. WIDTH RESTRICTION SIGNING
- 13-15. REPAIR DETAILS

STANDARDS:

- 701001-01 701321-09 704001-04
 701006-02 701326-02 780001-01
 701201-02 701901



FULL SIZE PLANS HAVE BEEN PREPARED USING STANDARD ENGINEERING SCALES. REDUCED SIZED PLANS WILL NOT CONFORM TO STANDARD SCALES. IN MAKING MEASUREMENTS ON REDUCED PLANS, THE ABOVE SCALES MAY BE USED.

J.U.L.I.E.
 JOINT UTILITY LOCATION INFORMATION FOR EXCAVATION
 1-800-892-0123
 OR 811

PROJECT ENGINEER: JIM MILLER
 PROJECT MANAGER: MAUREEN ADDIS

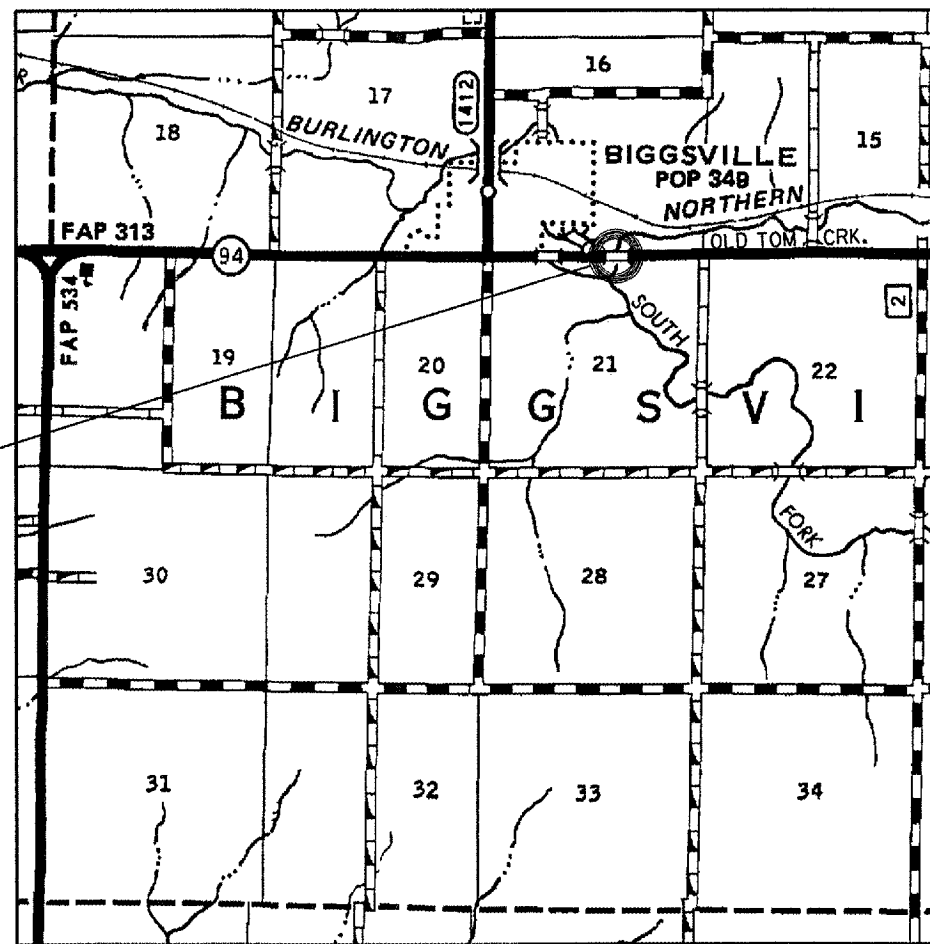
CONTRACT NO. 68771 - CATALOG NO. 033620-00D

STATE OF ILLINOIS
 DEPARTMENT OF TRANSPORTATION
 DIVISION OF HIGHWAYS

PROPOSED
 HIGHWAY PLANS

F.A.P. ROUTE 313
 SECTION (6B)I

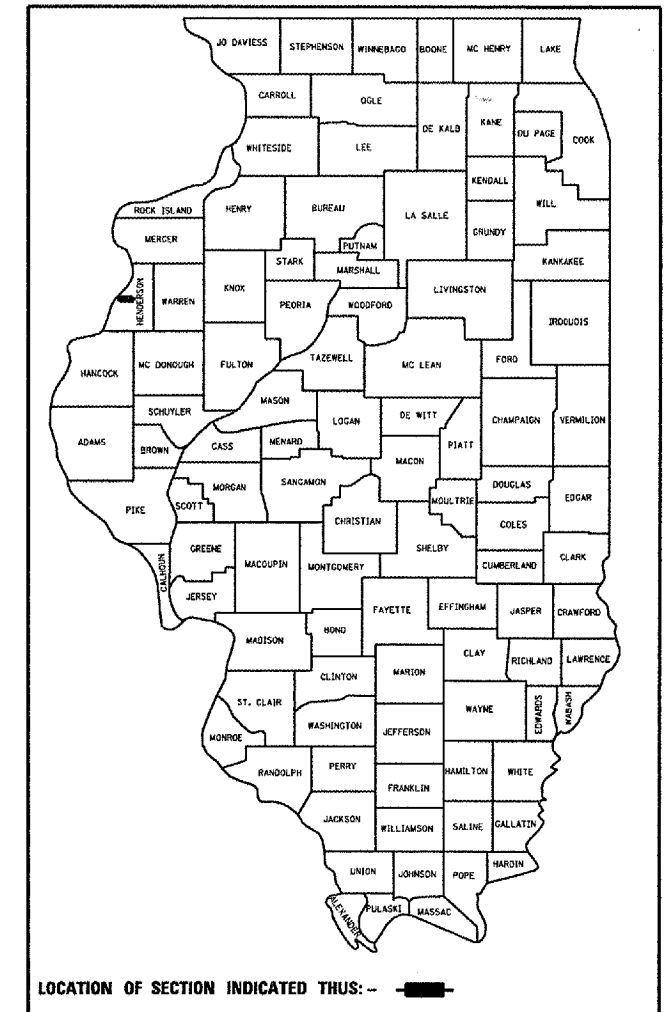
HENDERSON COUNTY
 JOB NO. C-94-008-08



LOCATION MAP

F.A.P. RTE.	SECTION	COUNTY	TOTAL SHEETS	SHEET NO.
313	(6B)I	Henderson	15	1
FED. ROAD DIST. NO. 4	ILLINOIS	CONTRACT NO. 68771		

D-94-008-08



PROJECT CONSISTS OF EMERGENCY BEAM REPLACEMENT OF (3) PPC DECK BEAMS ON STRUCTURE CARRYING US. 34 OVER OLD TOM CREEK (SN.036-0003), 0.5 MILES EAST OF IL. 94 JCT.

STATE OF ILLINOIS
 DEPARTMENT OF TRANSPORTATION
 DIVISION OF HIGHWAYS

SUBMITTED Feb 1, 2008
[Signature]
 DEPUTY DIRECTOR OF HIGHWAYS, REGION ENGINEER

March 21, 2008
Cris E. Harms
 INTERIM ENGINEER OF DESIGN AND ENVIRONMENT

March 21, 2008
Christine M. Reed
 DIRECTOR OF HIGHWAYS, CHIEF ENGINEER

PRINTED BY THE AUTHORITY
 OF THE STATE OF ILLINOIS

F.A.P. RTE.	SECTION	COUNTY	TOTAL SHEETS	SHEET NO.
313	16B1	HENDERSON	15	3
STA. 625+30.00		TO STA. 625+73.00		
FED. ROAD DIST. NO. 9		ILLINOIS FED. AID PROJECT		

SUMMARY OF QUANTITIES

100% STATE SAFETY - 2A
HENDERSON

CODE NO.	ITEM	UNIT	RURAL	TOTAL
35600712	HOT-MIX ASPHALT BASE COURSE WIDENING, 9"	SQYD	46	46
40603540	POLYMERIZED HOT-MIX ASPHALT SURFACE COURSE, MIX "D", N70	TON	5.7	5.7
44000920	BITUMINOUS CONCRETE SHOULDER REMOVAL	SQYD	46	46
44001005	HOT-MIX ASPHALT SURFACE REMOVAL	SQYD	46.3	46.3
50400405	<i>PRECAST PRESTRESSED CONCRETE</i> DECK BEAMS (21" DEPTH)	SQFT	382	382
50900905	REMOVING AND RE-ERECTING EXISTING RAILING	FOOT	43	43
58100200	WATERPROOFING MEMBRANE SYSTEM	SQYD	90.1	90.1
58300100	PORTLAND CEMENT MORTAR FAIRING COURSE	FOOT	171	171
67100100	MOBILIZATION	LSUM	1	1
70100405	TRAFFIC CONTROL AND PROTECTION, STANDARD 701321	EACH	1	1
70100450	TRAFFIC CONTROL AND PROTECTION, STANDARD 701201	LSUM	1	1
70100500	TRAFFIC CONTROL AND PROTECTION, STANDARD 701326	LSUM	1	1

SN.036-0003 US.34
over Old Tom Crk.

REVISIONS	
NAME	DATE

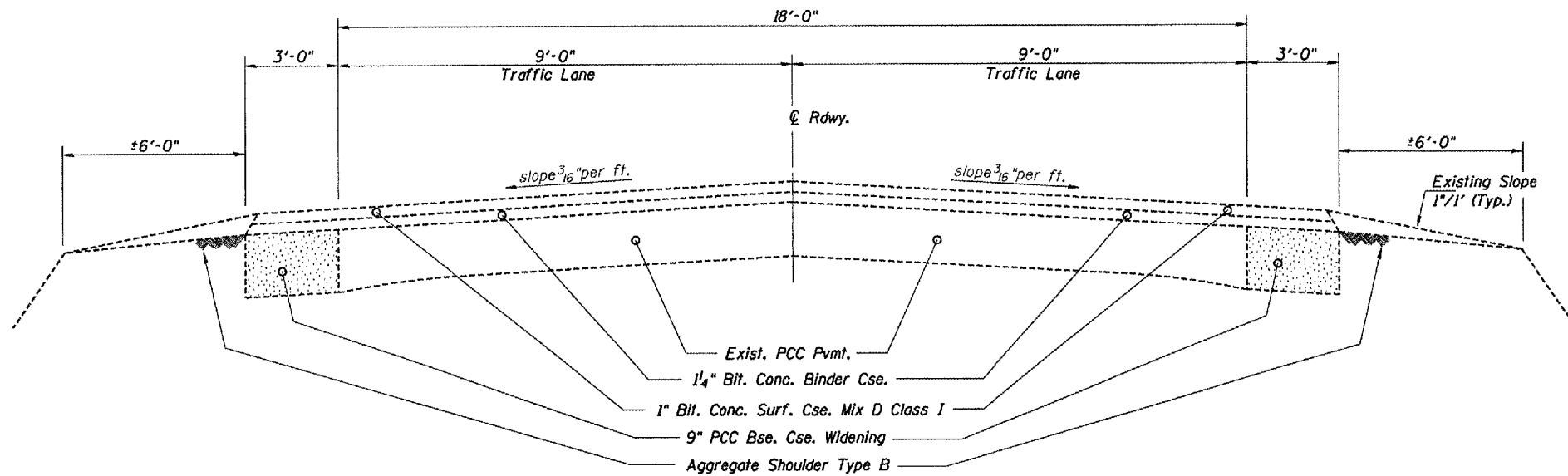
ILLINOIS DEPARTMENT OF TRANSPORTATION

SUMMARY OF QUANTITIES

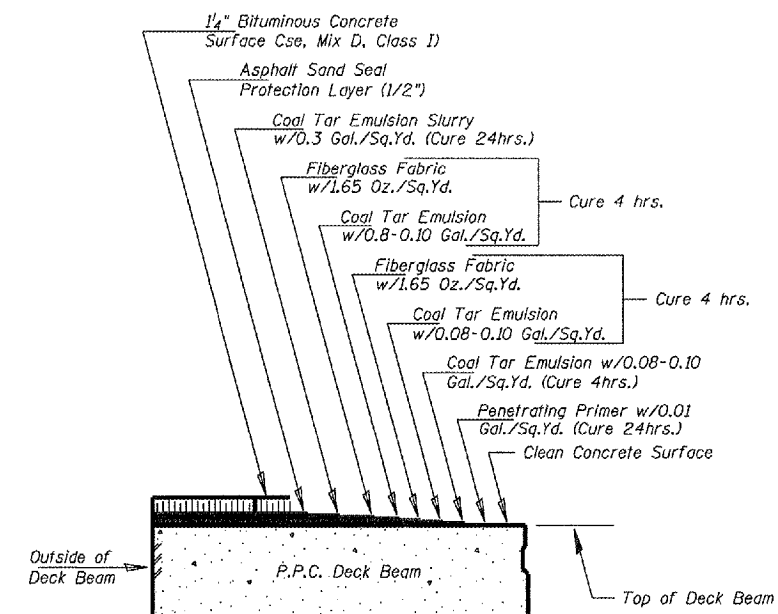
SCALE: VERT.
HORIZ.
DATE: 12-26-2007

DRAWN BY CEJ
CHECKED BY

F.A.P. RTE.	SECTION	COUNTY	TOTAL SHEETS	SHEET NO.
313	16811	HENDERSON	15	5
STA. 625+30.00 TO STA. 625+73.00				
FED. ROAD DIST. NO. 4 ILLINOIS FED. AID PROJECT				



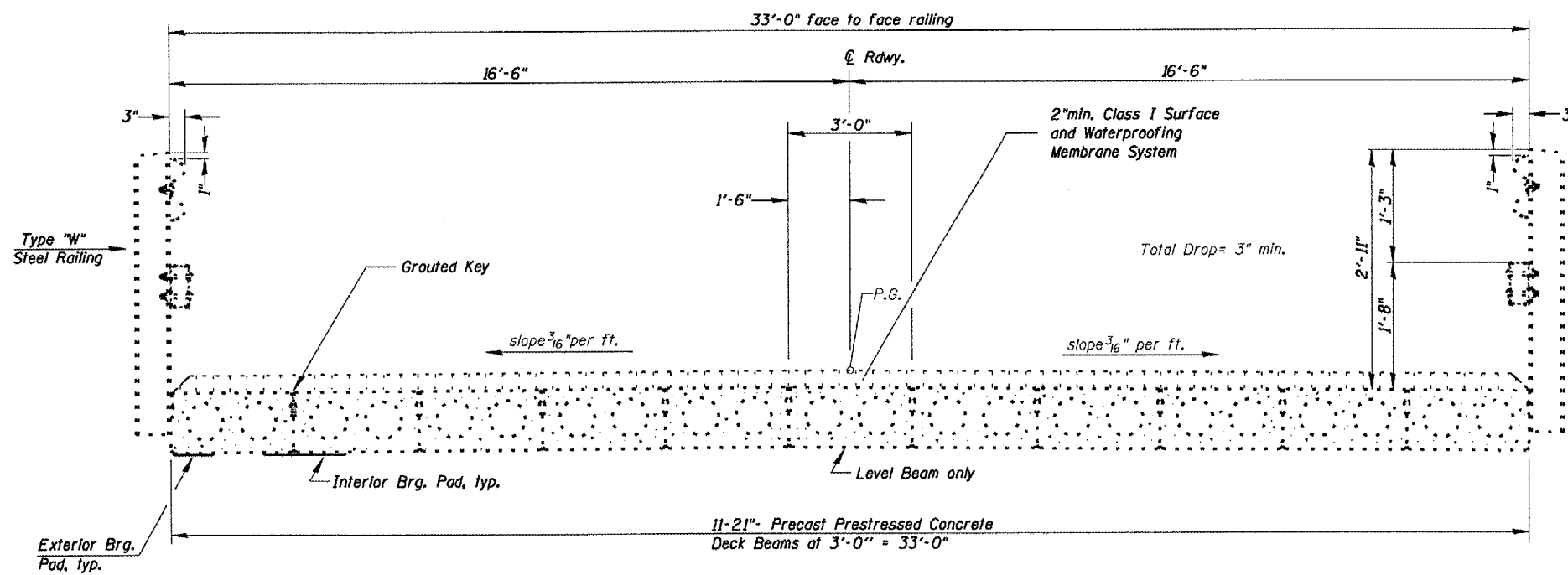
ROADWAY SECTION



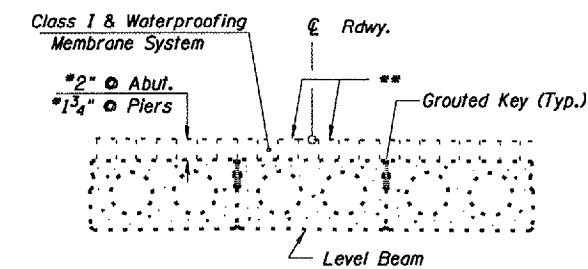
EXISTING DECK SURFACING DETAIL

***NOTE**

Plan dimensions and details relative to the existing structure have been taken from existing plans and are subject to nominal variations. Field inspections have revealed an existing overlay/shoulder thickness of up to 6" on top of the PPC deck beams.



BRIDGE CROSS SECTION



CLASS I DETAIL & WATERPROOFING TREATMENT
(C = Center Beam)

** Vary slopes over level beam as required to obtain equal thickness at adjacent beams.

SN.036-0003 US.34
over Old Tom Crk.

REVISIONS	
NAME	DATE

ILLINOIS DEPARTMENT OF TRANSPORTATION
TYPICAL SECTIONS
SCALE: VERT. HORIZ.
DATE: 12-26-2007
DRAWN BY: CEJ
CHECKED BY:

DATE: 04-26-2008
 FILE NAME: S:\GEN\DRFT\STDS\PLANS\SUBDIVISION\BRIDGE\CONTRACT\SYSTEM\Emergency PPC Beam Repair\68771 SN036-0003 Dia1 of 15.dwg
 PLOT SCALE: 1/8"=1'-0"
 USER NAME: MUSER-CEJ

F.A.P. RTE.	SECTION	COUNTY	TOTAL SHEETS	SHEET NO.
313	6B11	HENDERSON	15	6
STA. 625+30.00 TO STA. 625+73.00				
FED. ROAD DIST. NO. 4 ILLINOIS FED. AID PROJECT				

SCHEDULE OF QUANTITIES

PAVEMENT MARKING LINE, 4" & PAVEMENT MARKING REMOVAL

LOCATION STA. TO STA.	PVMT. MRKG. LINE, 4"		PVMT. MRKG. REM.	
	WHITE LENGTH (FOOT)	YELLOW LENGTH (FOOT)	WHITE EDGELINE (SQ.FT.)	YELLOW SKIP DASH (SQ.FT.)
Sta. 624+35 to Sta. 626+48Rt.	213		71	
Sta. 624+55 to Sta. 626+48 C		58		19
Sta. 624+10 to Sta. 627+11 LT.	301		100	
TOTAL		572		190

PAVEMENT MIX SPECIFICATION

The following mixture requirements are applicable as replacement for the existing HMA Surface Removal quantity on the bridge deck.

MIXTURE USE(S):	**SURFACE COURSE
AC/PG:	SBS or SBR 70-22
RAP% (MAX):	10% Max
Design Air Voids:	4.0% @ N=70
Mixture Composition: (Graduation Mixture)	IL. 9.5 or 12.5
Friction Aggregate:	Mixture D (dolomite only)

** Individual lift thickness will be no less than 3x nominal maximum and no more than 6x nominal maximum aggregate size.

PAVEMENT MARKING TAPE TYPE III, 4" & WORKZONE PAVEMENT MARKING REMOVAL

LOCATION STA. TO STA.	TEMP. PVMT. MRKG. LINE-4" WHITE (FT.)	TEMP. PVMT. MRKG. LINE-4" WHITE (FT.)	WORK ZONE PVMT. MRKG. REM. (FT.)
Sta. 624+10 to Sta. 624+55		155 (Taper)	155 (Taper)
Sta. 624+55 to Sta. 625+98		193 (C)	193 (C)
Sta. 625+98 to Sta. 627+98		200 (Taper)	200 (Taper)
Sta. 624+19 to Sta. 625+30	121 (Edge)		121 (Edge)
Sta. 625+30 to Sta. 625+73	43 (Deck)		43 (Deck)
Sta. 625+73 to Sta. 626+94	121 (Edge)		121 (Edge)
SUB-TOTAL	285	548	833
TOTAL		833	833

TEMPORARY TRAFFIC SIGNALS

LOCATION	TRAFFIC SIGNALS(EACH)
Jobsite Traffic Control	1
TOTAL	1

BITUMINOUS WIDENING MIX SPECIFICATION

The following mixture requirements are applicable to this project:

MIXTURE USE(S):	SURFACE LIFT	LOWER LIFTS
AC/PG:	PG 64-22	PG 64-22
RAP% (MAX): **	15% Max	25% Max
Design Air Voids:	4.0% @ N=50	4.0% @ N=50
Mixture Composition: (Graduation Mixture)	IL. 9.5 or 12.5	IL 19.0
Friction Aggregate:	Mixture D (dolomite only)	N/A

** If RAP option is selected, the asphalt cement grade may need to be adjusted by the Materials Engineer.

TRAFFIC CONTROL

LOCATION STA. TO STA.	TEMP. CONC. BARRIER (FT)	IMPACT ATTN. TEMP. (EACH)	T.C.&P. STANDARD 701201 (EACH)	T.C.&P. STANDARD 701321 (EACH)	T.C.&P. STANDARD 701326 (EACH)
Sta. 623+89 to Sta. 627+10	325				
JOBSITE		2	1	1	1
TOTAL	325	2	1	1	1

SHOULDER REMOVAL/REPLACEMENT

BITUMINOUS CONCRETE SHOULDER REMOVAL			
RIGHT WEST APPROACH	SQ.YD.	RIGHT EAST APPROACH	SQ.YD.
Sta. 626+94 to Sta. 626+03	23	Sta. 625+00 to Sta. 624+09	23
LEFT WEST APPROACH		LEFT EAST APPROACH	
	N/A		N/A
TOTAL			46.0
HMA BASE COURSE WIDENING, 9"			
RIGHT WEST APPROACH	SQ.YD.	RIGHT EAST APPROACH	SQ.YD.
Sta. 626+94 to Sta. 626+03	23	Sta. 625+00 to Sta. 624+09	23
LEFT WEST APPROACH		LEFT EAST APPROACH	
	N/A		N/A
TOTAL			46.0

SN.036-0003 US.34
over Old Tom Crk.

REVISIONS	
NAME	DATE

ILLINOIS DEPARTMENT OF TRANSPORTATION

SCHEDULE OF QUANTITIES

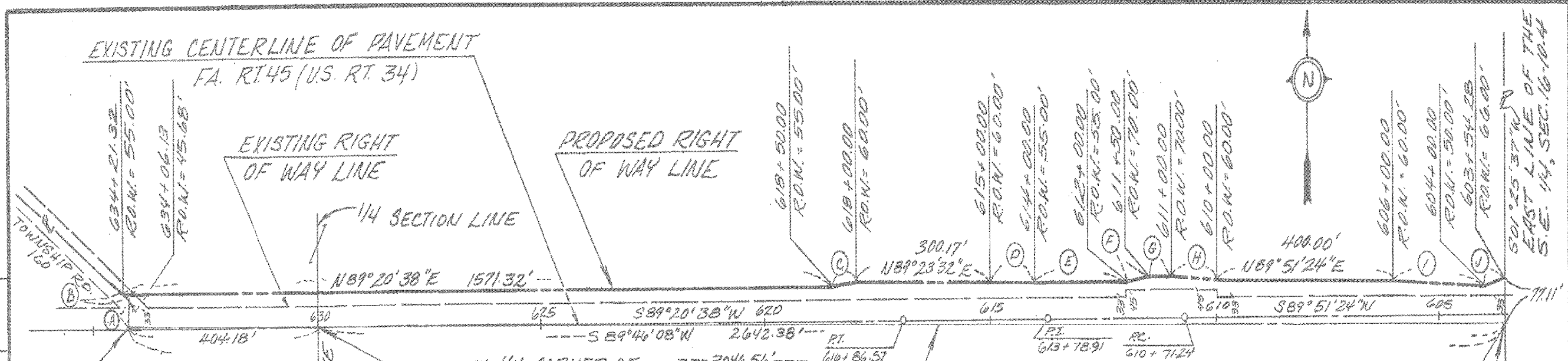
SCALE: VERT. DRAWN BY CEJ
 HORIZ. CHECKED BY
 DATE 01-20-2008

PLOT DATE = #DATE# 04-25-2008
 FILE NAME = #FILE# B:\VEN\DRMT\STOSAP\MS\SQUAD\BRIDGE CONTRACTS\Emergency PFC Beam Repair\68771 6836-9863 Diff\68771\6836+9863\01\68771.dgn
 PLOT SCALE = #SCALE#
 USER NAME = #USER# CEJ

NOTE
 Additional pay items that may not be included in the SCHEDULE OF QUANTITIES pertain to the superstructure repair and are designated on the Bridge Office Repair Details, (pages 13-15). Width Restriction Signing is on Sheet 12.

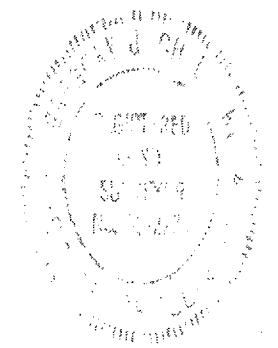
F.A.P. RTE.	SECTION	COUNTY	TOTAL SHEETS	SHEET NO.
313	16B11	HENDERSON	15	7
STA: 625+30.00		TO STA: 625+73.00		
FED. ROAD DIST. NO. 4 ILLINOIS FED. AID PROJECT				

STATE OF ILLINOIS
DEPARTMENT OF TRANSPORTATION



DATE	BY	COMPUTED	CHECKED
		INKED	INK CHECKED
R.O.W. PLAT	NOTE BOOK		

S.W. PROPERTY CORNER IS 2.36' NORTH OF THE CENTERLINE.



THIS IS TO CERTIFY THAT THIS IS A TRUE AND CORRECT PLAT OF A SURVEY MADE UNDER MY DIRECTION FOR THE DIVISION OF HIGHWAYS, STATE OF ILLINOIS

Guy Chell
ILLINOIS REGISTERED LAND SURVEYOR NO. 2279

LEGEND

- (A) N 04° 46' 52" W - 43.43'
- (B) N 59° 08' 59" W - 17.83'
- (C) N 83° 38' 00" E - 50.25'
- (D) S 87° 35' 56" E - 100.21'
- (E) N 89° 39' 58" E - 200.16'
- (F) N 73° 05' 07" E - 52.25'
- (G) N 89° 48' 43" E - 50.00'
- (H) S 84° 26' 16" E - 100.53'
- (I) S 87° 16' 51" E - 200.25'
- (J) N 70° 34' 00" E - 48.44'

Curve Data

PI. 613+78.91
 $\Delta = 00^\circ 30' 46''$
 $D = 00^\circ 05' 00''$
 $T = 307.67'$
 $L = 615.33'$
 $R = 68754.94'$
 $E = 0.68'$

AREA = 196,310 S.F., ± OR 4.507 ACRES, ± OF WHICH 125,000 S.F., ± OR 2.870 ACRES, ± IS IN EXISTING PUBLIC ROAD R.O.W.

S.E. CORNER OF THE S.E. 1/4 OF SEC. 16. CORNER IS 1109' SOUTH OF THE CENTERLINE

421C030

IRENE L. GIBB

A PART OF THE SOUTH 1/2 OF SECTION 16, TOWNSHIP 10 N, RANGE 4W 4th PRINCIPAL MERIDIAN, HENDERSON COUNTY

RIGHT OF WAY PLAT

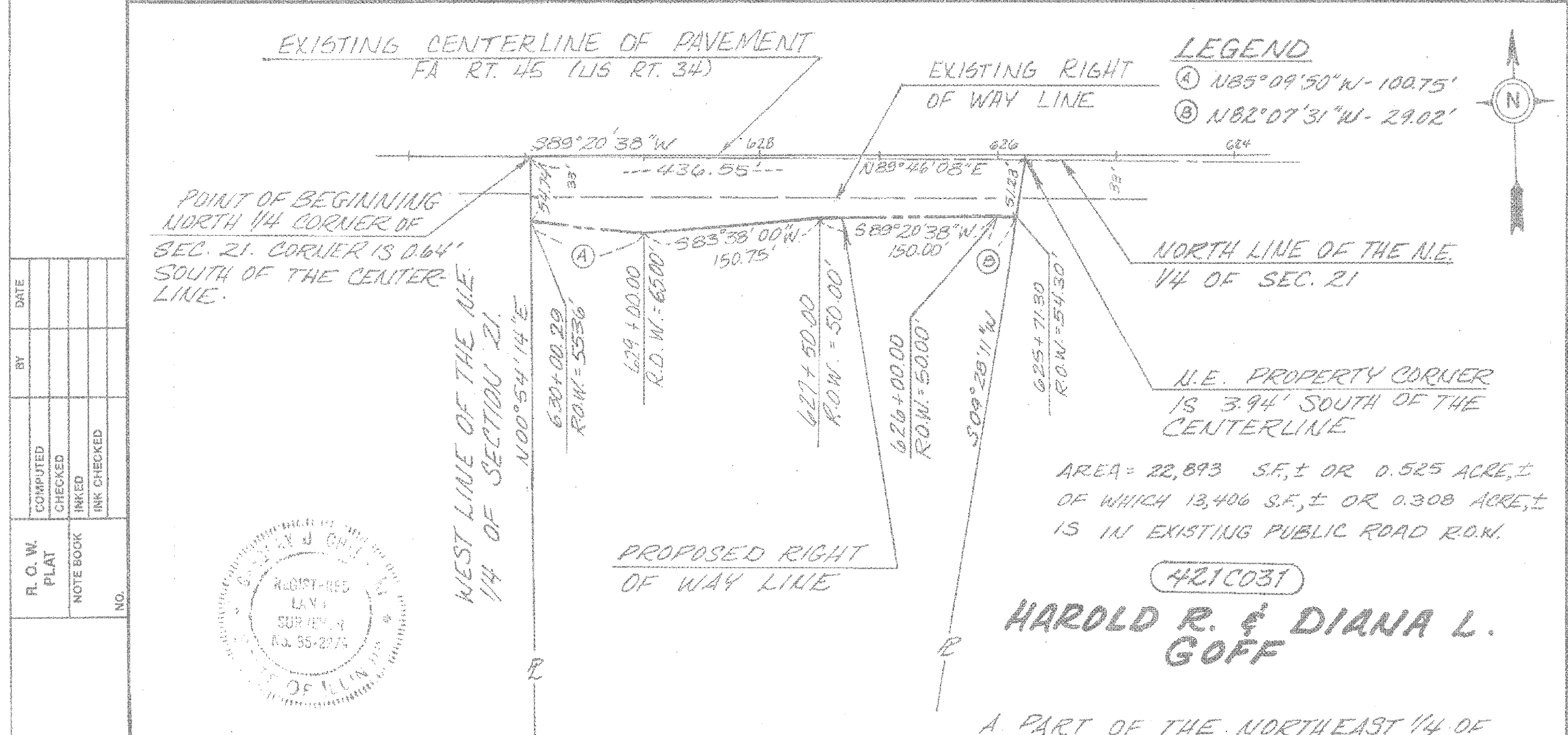
FA. ROUTE 45 CONSTRUCTION SECTION (S.W.R.S.) (67) R.R.S.-1
 SCALE: 1" = 200' DECEMBER 1986 JOB NO. R94-021-87

Signed 3-30-88 Recorded 6-10-88 BOOK PAGE DOCUMENT NO. 132226

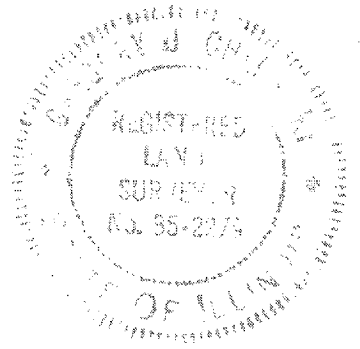
PLOT DATE: 04-25-2008
 PLOT SCALE: 1"=200'
 USER NAME: GIBB-CEJ

F.A.P. RTE.	SECTION	COUNTY	TOTAL SHEETS	SHEET NO.
313	1601	HENDERSON	15	8
STA. 625+30.00		TO STA. 625+73.00		
FED. ROAD DIST. NO. 4		ILLINOIS FED. AID PROJECT		

STATE OF ILLINOIS
DEPARTMENT OF TRANSPORTATION



COMPUTED	BY	DATE
CHECKED		
INKED		
INK CHECKED		
R. O. W. PLAT	NOTE BOOK	NO.



THIS IS TO CERTIFY THAT THIS IS A TRUE AND CORRECT PLAT OF A SURVEY MADE UNDER MY DIRECTION FOR THE DIVISION OF HIGHWAYS, STATE OF ILLINOIS.

[Signature]
ILLINOIS REGISTERED LAND SURVEYOR NO. 2279

A PART OF THE NORTHEAST 1/4 OF SECTION 21, TOWNSHIP 10 N, RANGE 4W, 4th PRINCIPAL MERIDIAN HENDERSON COUNTY

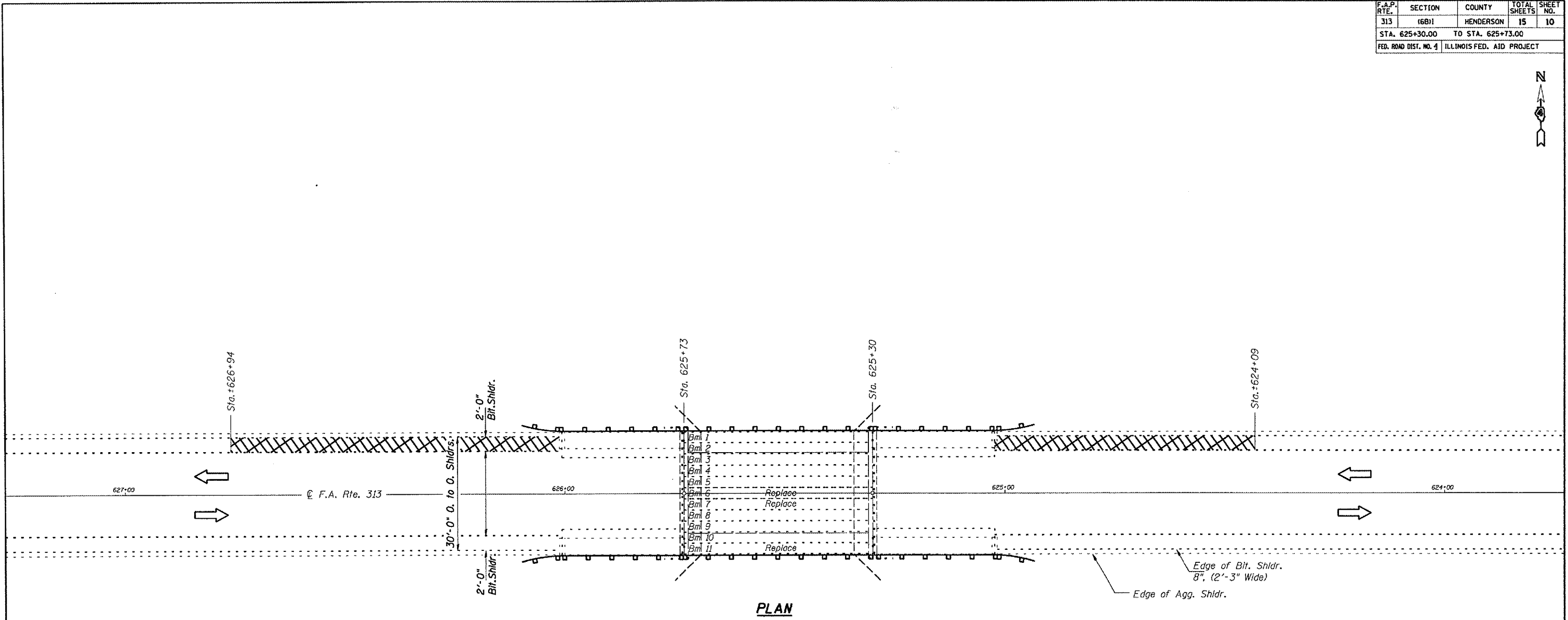
RIGHT OF WAY PLAT

FA ROUTE 45 CONSTRUCTION SECTION (5,6)RS-1,(6,7)R,R6-1
SCALE: 1" = 100' DECEMBER 19 86 JOB NO. R-94-021-87

Signed 4-4-88 Recorded 6-10-88 BOOK PAGE SN.036-0003 US.34 DOCUMENT NO. 132219 over Old Tom Crk.

PLOT DATE: 04-28-88
 FILE NAME: S:\GEN\DRFT\AST08\PLANS\BND\14\BRIDGE CONTRACT\5\Emergency PFC Beam Repair\68771_S036-0003_DistLoc\A\US34over-OldTomCrk.dgn
 PLOT SCALE: 1"=100'
 USER NAME: MUSEIR-CEJ

F.A.P. RTE.	SECTION	COUNTY	TOTAL SHEETS	SHEET NO.
313	16B11	HENDERSON	15	10
STA. 625+30.00 TO STA. 625+73.00				
FED. ROAD DIST. NO. 4			ILLINOIS FED. AID PROJECT	



PLAN

BILL OF MATERIAL

Item	Unit	Total
Bituminous Concrete Shoulder Removal	Sq.Yd.	46
HMA Base Course Widening, 9"	Sq.Yd.	46

LEGEND

Proposed Shoulder Removal/Replacement

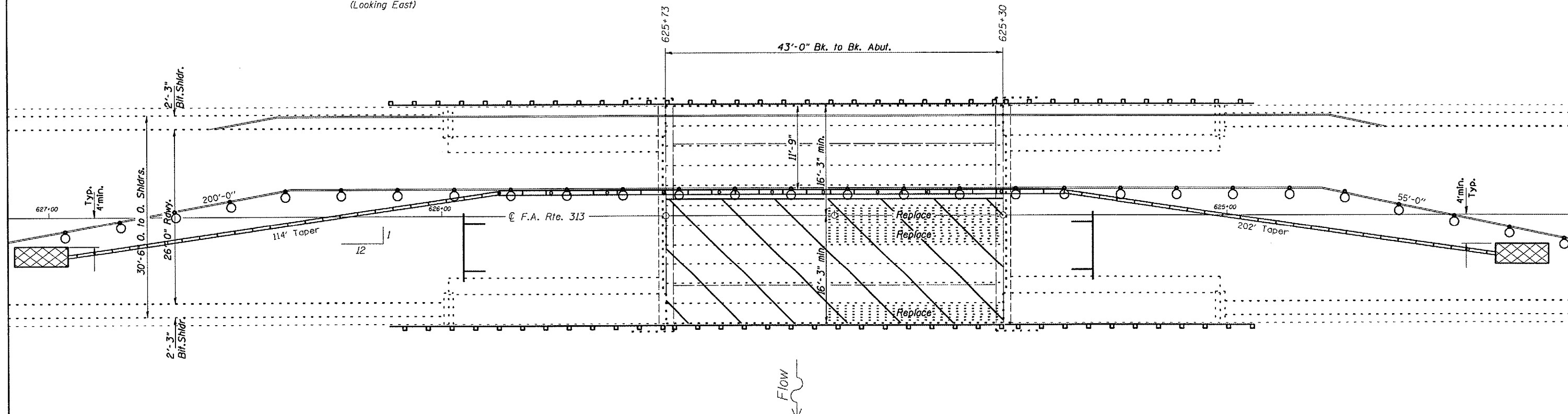
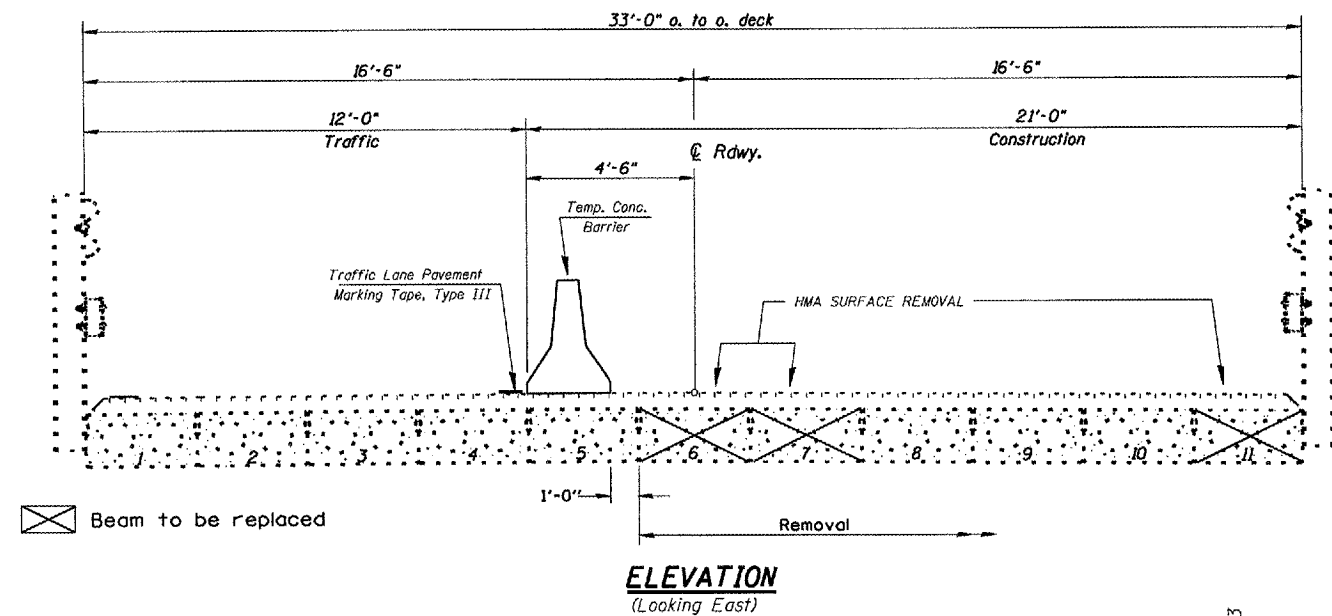
SN.036-0003 US.34
over Old Tom Crk.

REVISIONS	
NAME	DATE

ILLINOIS DEPARTMENT OF TRANSPORTATION
**PROPOSED SHOULDER
REM. / REPL.**
SCALE: VERT. _____
 HORIZ. _____
DATE 01-18-2008
DRAWN BY CEJ
CHECKED BY _____

PLOT DATE: 01-18-2008 10:47 AM
 PLOT SCALE: 1"=40'
 PLOT REFERENCE: 01-18-2008
 CONTRACT: SN.036-0003 US.34
 PROJECT: PROPOSED SHOULDER REM. / REPL.
 DRAWN BY: CEJ
 CHECKED BY: _____
 DATE: 01-18-2008

F.A.P. RTE.	SECTION	COUNTY	TOTAL SHEETS	SHEET NO.
313	6801	HENDERSON	15	11
STA. 625+30.00 TO STA. 625+73.00				
FED. ROAD DIST. NO. 4 ILLINOIS FED. AID PROJECT				



- SYMBOLS**
- Work Area
 - Type II Barricade
 - Drum w/ steady burning light
 - Type C bidirectional reflector
 - Temporary Concrete Barrier
 - Impact Attenuator NRD TL3

NOTES
Refer to Highway Standard 701321 for exact placement of traffic management devices and other clarifications as construction staging symbols and dimensioning were duplicated off of this standard. Temporary Traffic Signals shown in Standard 701321 are to be installed by others. Removal of these signals is included in this contract. See Special Provisions.

REVISIONS	
NAME	DATE

ILLINOIS DEPARTMENT OF TRANSPORTATION

TRAFFIC CONTROL

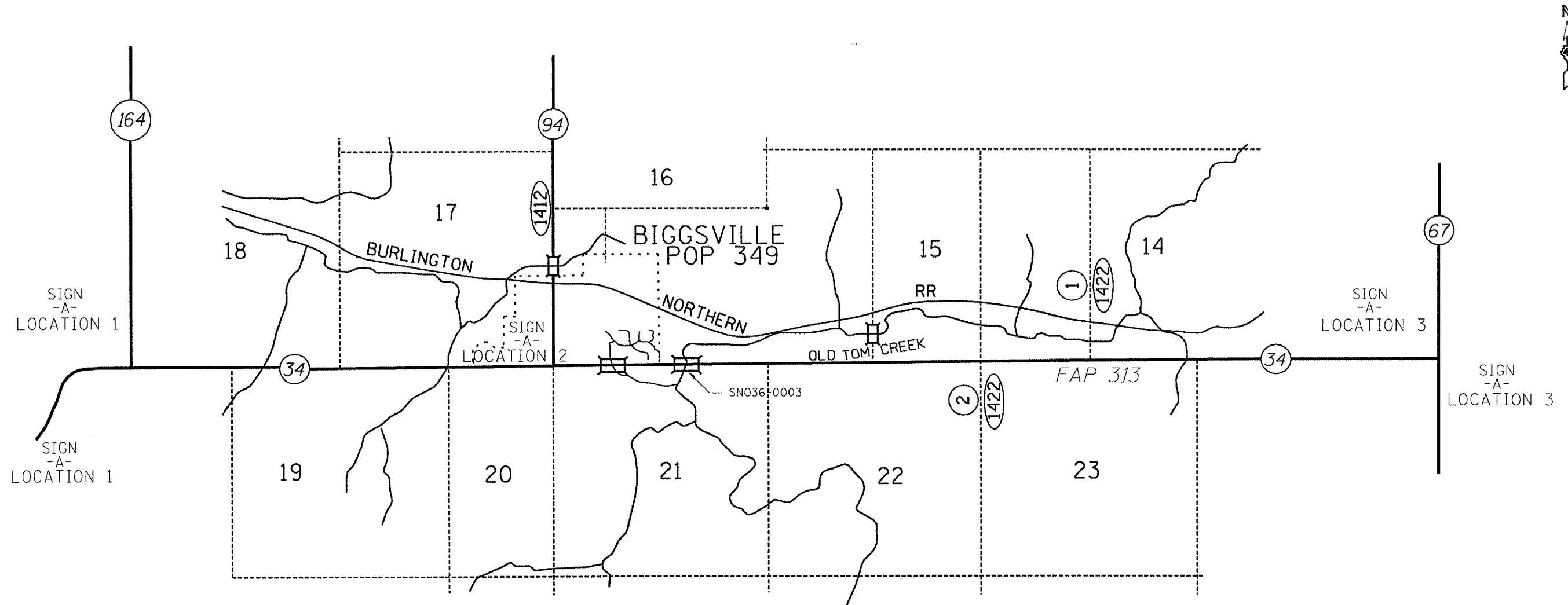
SCALE: VERT. DRAWN BY CEJ
HORIZ. CHECKED BY
DATE 08-20-2007

DATE: 8-16-07
FILE: S:\GEN\DRM\1\STDR\RES\SD\AQ1\BRIDGE_Contract\US\Emergency\PCB\asmt\papr\168771_SNP35-888\3534overTomCrk.dgn
SCALE: AS SHOWN
SHEET: 11

F.A.P. RTE.	SECTION	COUNTY	TOTAL SHEETS	SHEET NO.
313	6811	HENDERSON	15	12
STA. 625+30.00 TO STA. 625+73.00				
FED. ROAD DIST. NO. 4 ILLINOIS FED. AID PROJECT				

NOTES

Notification signs shall be posted where necessary indicating maximum width ahead of 10'-3" and Changeable Message Boards for traffic from both directions placed one week prior to work start date for public safety and awareness.



SN.036-0003 SIGNING DISTANCES

	SIGN -A-	SIGN -B-
LOCATION 1	2 EA.	NA
LOCATION 2	1 EA.	
LOCATION 3	2 EA.	
LOCATION 4		

CONTRACTOR PROVIDED MAX. WIDTH
XX-XX
XX MILES SIGN -A-
 IDOT PROVIDED IL. 34

SN.036-0003 US.34
over Old Tom Crk.

SEE SPECIAL PROVISIONS FOR SIGNING DETAILS.

REVISIONS	
NAME	DATE

ILLINOIS DEPARTMENT OF TRANSPORTATION
**WIDTH RESTRICTION
 SIGNING**
 SCALE: VERT. _____
 HORIZ. _____
 DATE 01-10-2008
 DRAWN BY CEJ
 CHECKED BY _____

DATE: 08-18-07
 FILE: I:\AS\GEN\ORF\T\STON\PLANS\SLASH\BRIDGE_Contract\Emergency\PC\Bea\Repa\169771_SN036-0003\034overTomCrk.dgn
 SCALE: 1"=400'
 SHEET: 12 OF 15

STATE OF ILLINOIS
DEPARTMENT OF TRANSPORTATION

ROUTE NO.	SECTION	COUNTY	LENG. FOOTS	SHEET NO.	SHEET NO. 1
		Henderson	15	13	3 SHEETS
FED. ROAD DIST. NO. 7 ILL. ROAD FED. AID PROJECT					
Contract Number: 68771					

Notes:
See Special Provisions for Stage Construction
Precast Prestressed Concrete Deck Beams.
See Stage Construction Detail for traffic lane.
Cost is included with Precast Prestressed
Concrete Deck Beams.

GENERAL NOTES

The contractor is advised that the existing PPC Deck Beams are in a deteriorated condition with reduced load carrying capacity. It is the contractor's responsibility to account for the condition of the beams when developing construction procedures.

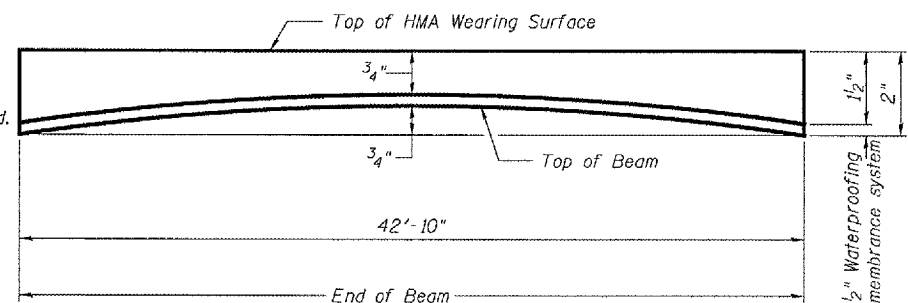
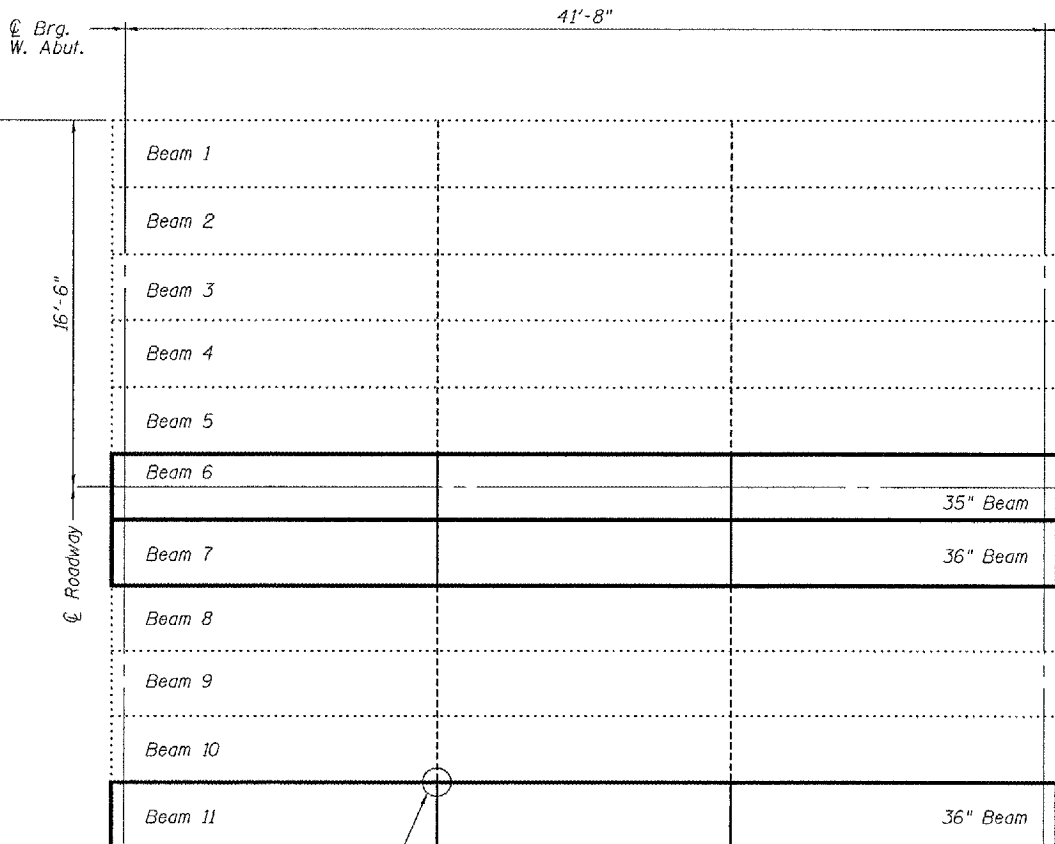
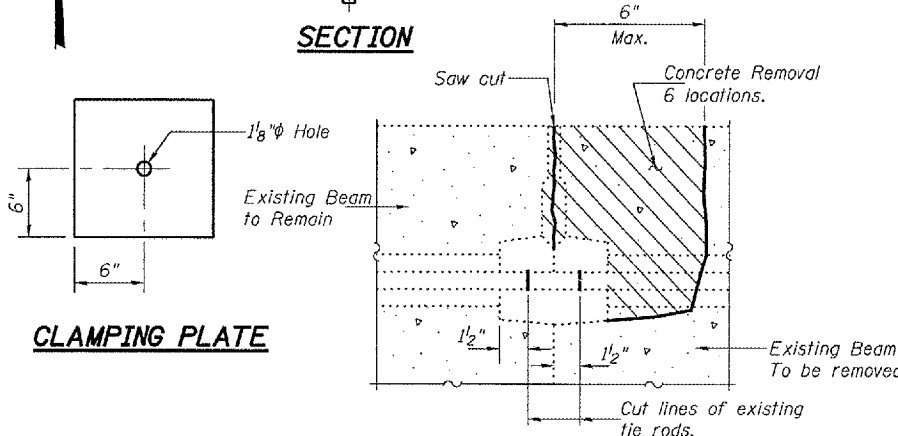
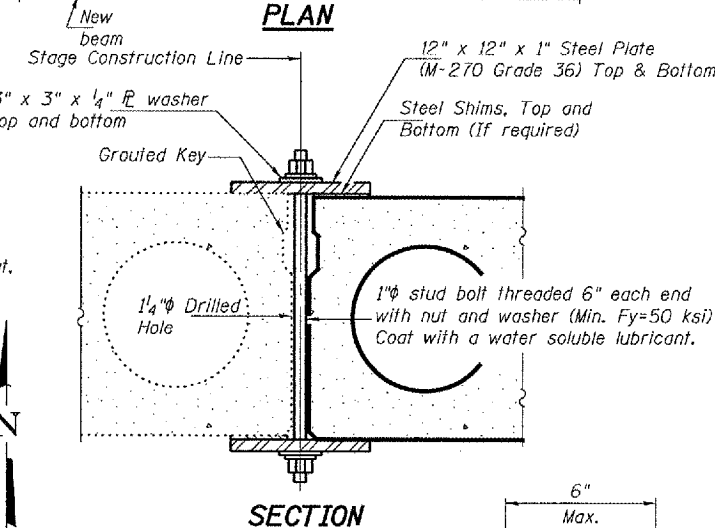
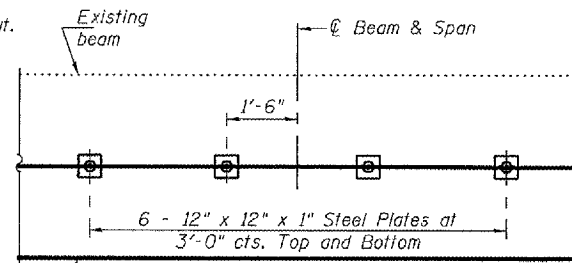
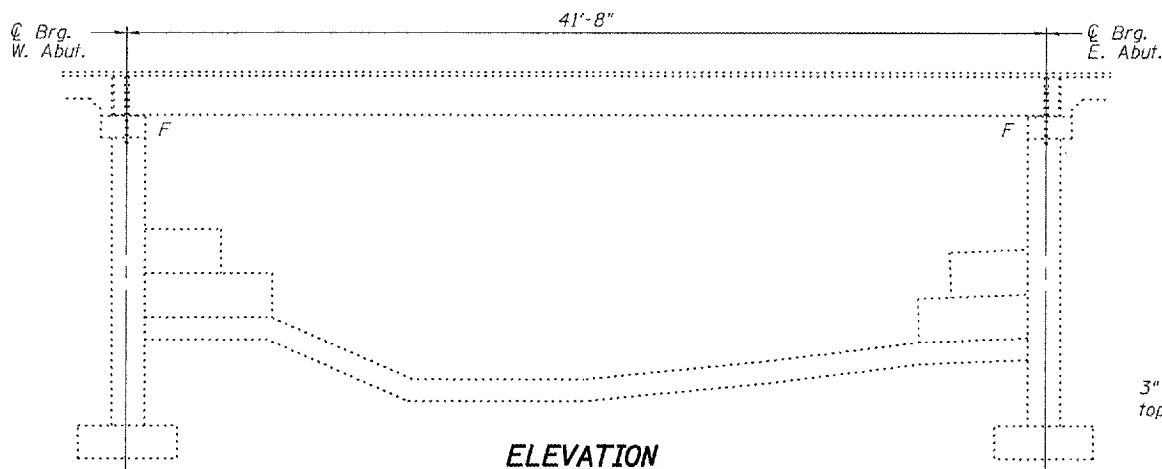
Any damage done to the bridge during beam removal shall be repaired by the Contractor. Cost to be included in the cost of Removal of Existing PPC Deck Beams.

The top surface of the beams shall be finished according to the IDOT Manual for Fabrication of Precast Prestressed Concrete Products.

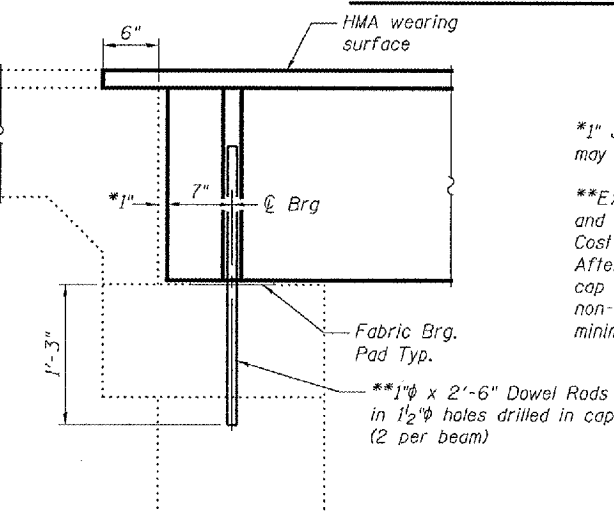
Plan dimensions and details relative to existing plans are subject to routine variations. The Contractor shall field verify existing dimensions and details affecting new construction and make necessary approved adjustments prior to construction or ordering of materials. Such variations shall not be cause for additional compensation for a change in scope of the work, however, the Contractor will be paid for the quantity actually furnished based upon the unit price bid for the work.

If the contractor's procedure for existing beam removal or placement of new beams involves placement of cranes or other heavy equipment on the bridge, a detailed procedure shall be submitted to the Engineer for approval. The procedure shall include calculations, prepared and sealed by an Illinois Licensed Structural Engineer, verifying that the equipment and procedure used will not overstress the new or existing beams. To distribute load to multiple beams and protect the existing surface, in all cases a double layer mat of heavy timbers shall be used at all times under crane tracks or wheels and any outriggers in the down position. If necessary, shims shall be used under the crane mat to ensure uniform contact with the underlying beams. If heavy equipment will be placed on new PPC deck beams, the following shall be done prior to placement of the timber mats: placement and tightening of transverse tie assemblies, grouting and curing the dowel rods 24 hours minimum and grouting and curing the shear keys.

Temporary concrete barrier shall only be anchored into the overlay and not into the PPC Deck Beams.



BEAM REMOVAL DETAIL AT TRANSVERSE TIES



*1" Joint shall be filled with non-shrink grout. Dimension may vary to accommodate tolerance in beam lengths.

**Existing dowel rods are to be burned off, ground flush, and sealed with epoxy prior to placement of new beams. Cost included in Removal of Existing PPC Deck Beams. After beams have been erected holes shall be drilled into cap and dowel rods placed. Dowel holes shall be filled with non-shrink grout to top of beam and allowed to cure a minimum of 24 hours prior to grouting the shear keys.

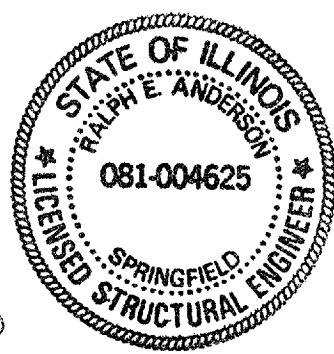
DESIGN STRESSES
PRECAST UNITS

f'c = 5,000 psi
f'ci = 4,000 psi
f's = 270,000 psi (1/2" low lax strands)
f'si = 201,960 psi (1/2" low lax strands)

TOTAL BILL OF MATERIAL

ITEM	UNIT	QUANTITY
Removal of Existing PPC Deck Beams	Sq. Ft.	385
Precast Prestressed Concrete Deck Beams (21" Depth)	Sq. Ft.	382
Removing and Re-Erecting Existing Railing	Foot	43
Waterproofing Membrane System	Sq. Yd.	90.1
PC Mortar Fairing Course	Foot	171
Hot-Mix Asphalt Surface Removal	Sq. Yd.	46.3
Polymerized HMA Surface Course Mix "D" N70	Tons	5.7

PLAN AND ELEVATION
F.A. RT. 45
HENDERSON COUNTY
SN 036-0003



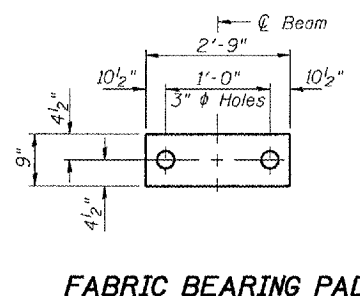
DESIGNED Victor H. Veliz
CHECKED [Signature]
DRAWN [Signature]
CHECKED AJB VHV

February 26, 2008
EXAMINED [Signature]
PASSED [Signature]
ENGINEER OF STRUCTURAL SERVICES
ENGINEER OF BRIDGES AND STRUCTURES

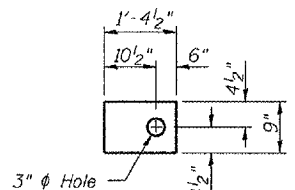
Expires: November 30, 2008

STATE OF ILLINOIS
DEPARTMENT OF TRANSPORTATION

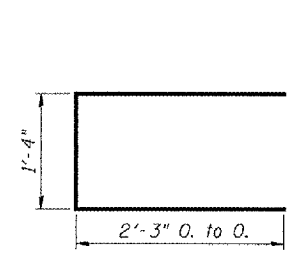
ROUTE NO.	SECTION	COUNTY	SHEET NO.	SHEET NO. 2
		Henderson	15	14
FED. ROAD DIST. NO. 7		ILLINOIS	FED. AID PROJECT	3 SHEETS



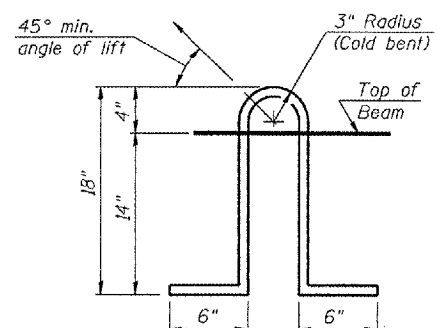
FABRIC BEARING PAD



FABRIC ADJUSTING SHIM

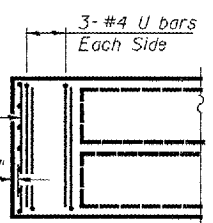


BAR U

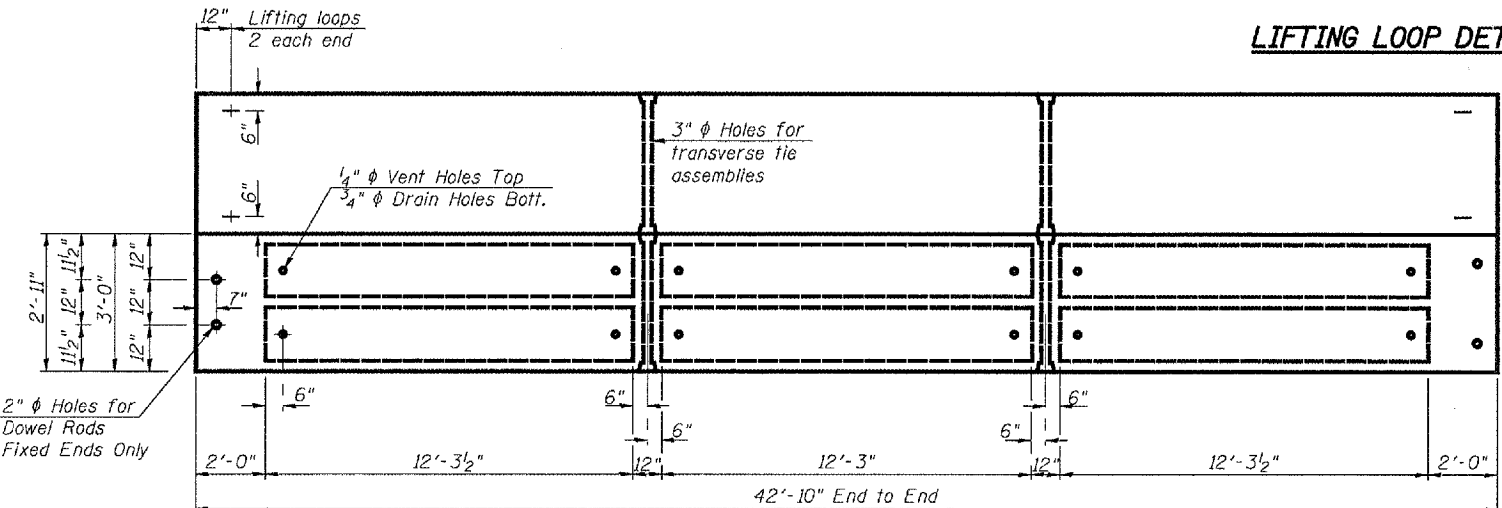


LIFTING LOOP DETAIL

8 x 3-W2.5 x W5.5
Wire Fabric, W5.5 vert.
Full depth of beam.
Each End.

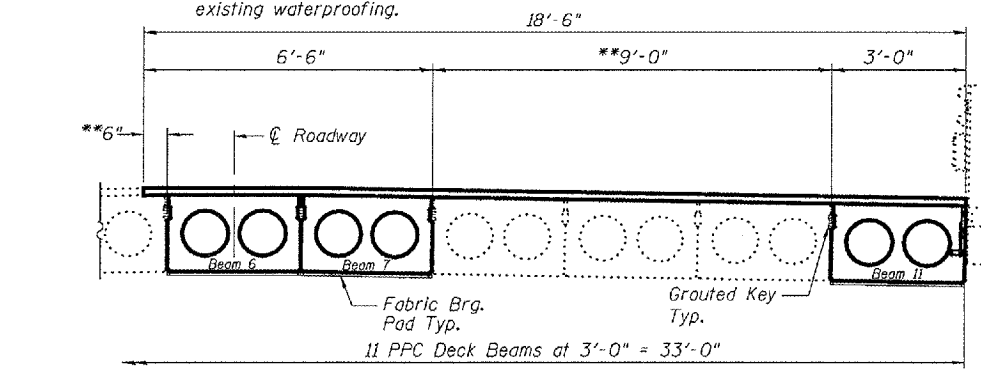


END PLAN

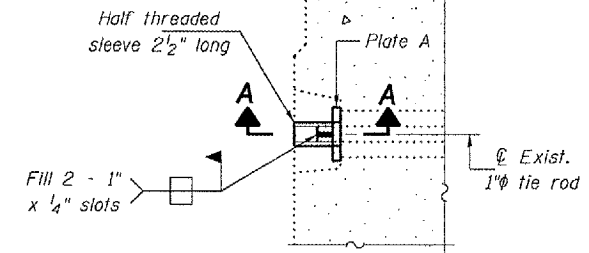


PLAN

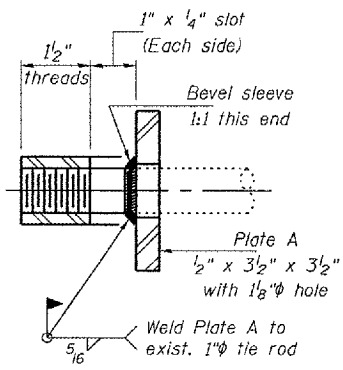
**Limits of HMA Surface Removal.
Existing waterproofing to remain.
Lap new waterproofing 6" over
existing waterproofing.



DECK CROSS SECTION
(Looking East)



DETAIL A



SECTION A-A
(4 Required)

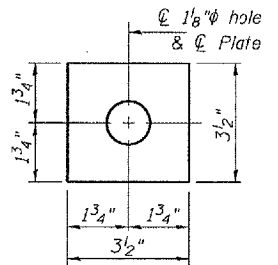
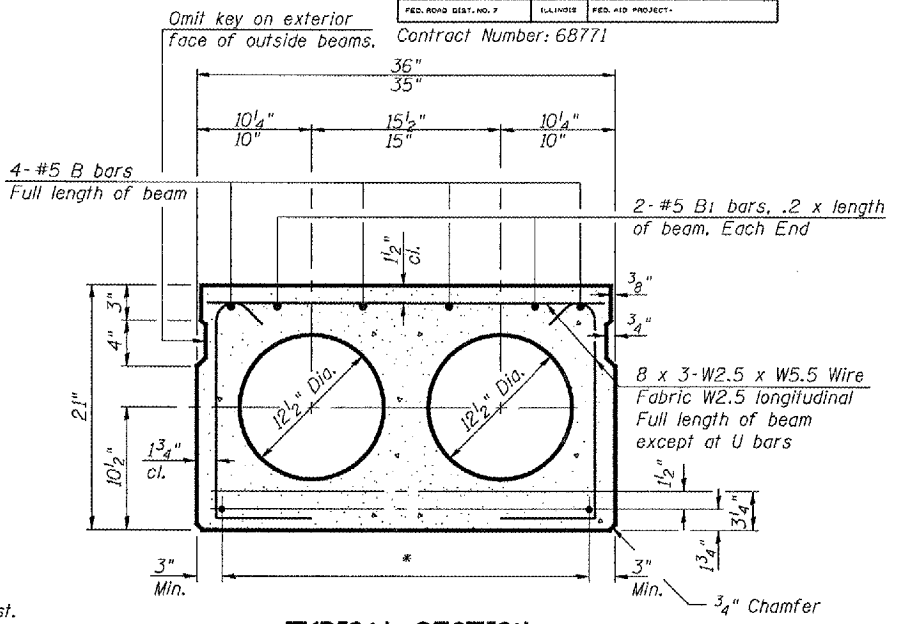


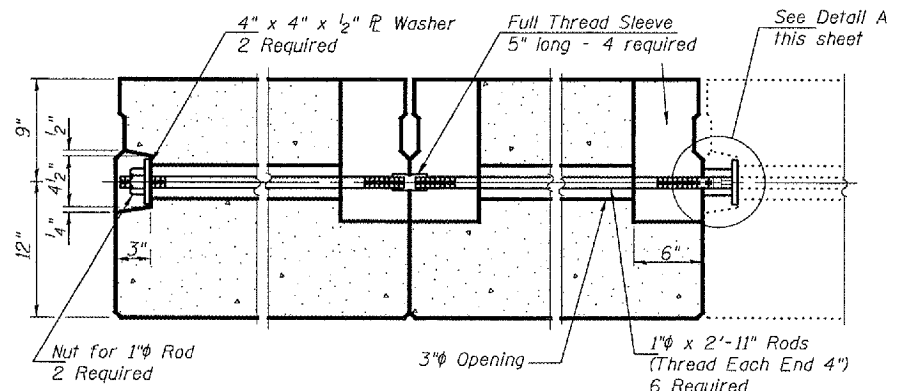
PLATE A
(4 Required)



TYPICAL SECTION

1/2" Strands, Each Strand Stressed to 30,900 Lbs.
6-Strands 1 3/4" up, 4-Strands 3/4" up

6" x 6" x 1 1/2" Blockout to be filled with Class BS Concrete
after Beams have been installed. Cost shall be included in the
cost of "PPC Deck Beams". Omit on the exterior face of
fascia beams.



TYPICAL TRANSVERSE TIE ASSEMBLY

BILL OF MATERIAL

Precast Prestressed Conc. Deck Bms.	Sq. Ft.	382
-------------------------------------	---------	-----

NOTES

Prestressing steel shall be uncoated high strength, low relaxation 7-wire strand, Grade 270. The nominal diameter shall be 1/2" and the nominal cross-sectional area shall be 0.153 sq. in. Lifting loops shall be 2-1/2" diameter 270 ksi strands, as shown. The 1" rods in the transverse tie assembly shall be tightened to a snug fit and the threads set. Pockets that receive transverse tie bar on outside shall be filled with grout after transverse tie assembly is in place. Non prestressing steel shall conform to ASTM A 706 (IL MOD), Grade 60. The bearing seat surfaces shall be adjusted by shimming to assure firm and even bearing. Two 1/8" fabric adjusting shims of the dimensions shown shall be provided for each bearing. Keyway surfaces shall be cleaned to remove form oil or other bond breaking material prior to shipment of the beams. Cleaning shall be done by sandblasting the keyway areas between top of the beam and the bottom edge of the key. Corrosion Inhibitor, per Article 1020.05(b)(12) of the Standard Specifications, shall be used in the concrete for precast prestressed concrete deck beams. Required Release Strength, f'cl, shall be 4000 p.s.i.

* TRANSVERSE PLACEMENT GUIDELINES

1. Place strands symmetrically about centerline of beam.
2. The minimum distance from center to center of strands in all directions shall be 2".
3. The minimum clearance from strand to dowel hole shall be 1/2".
4. The minimum clearance from strand to void shall be 1/2".

Vertical placement of strands shall not be adjusted to satisfy the above guidelines.

BEAM DETAILS
F.A. RT. 45
HENDERSON COUNTY
SN 036-0003

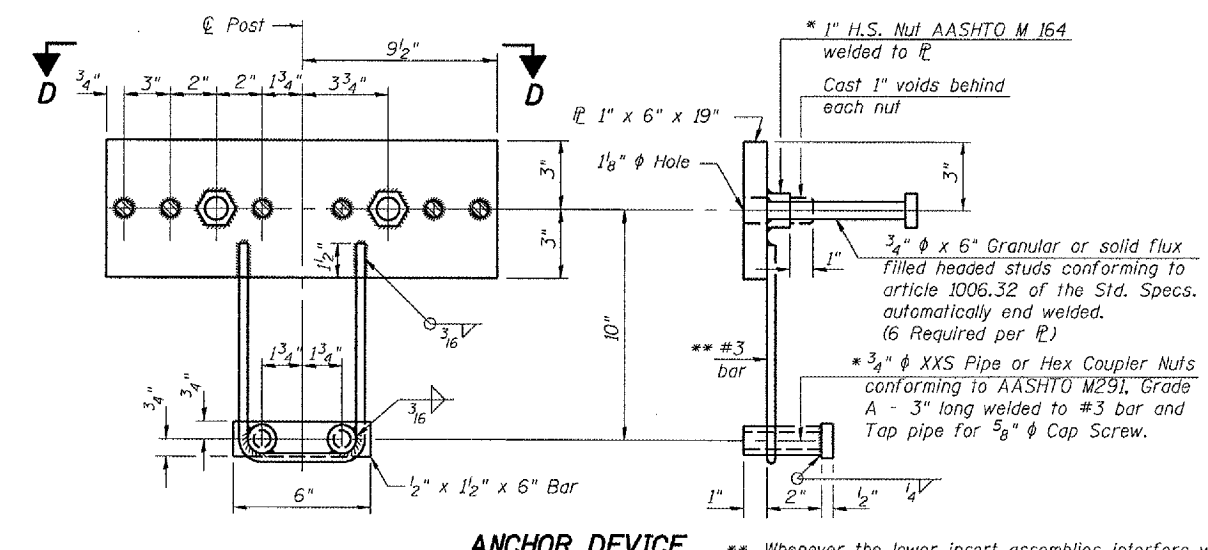
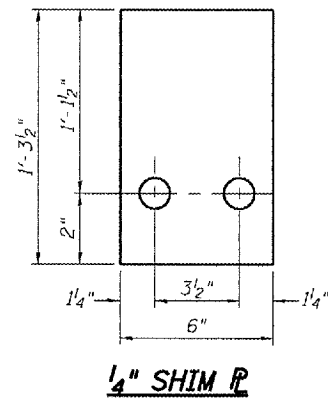
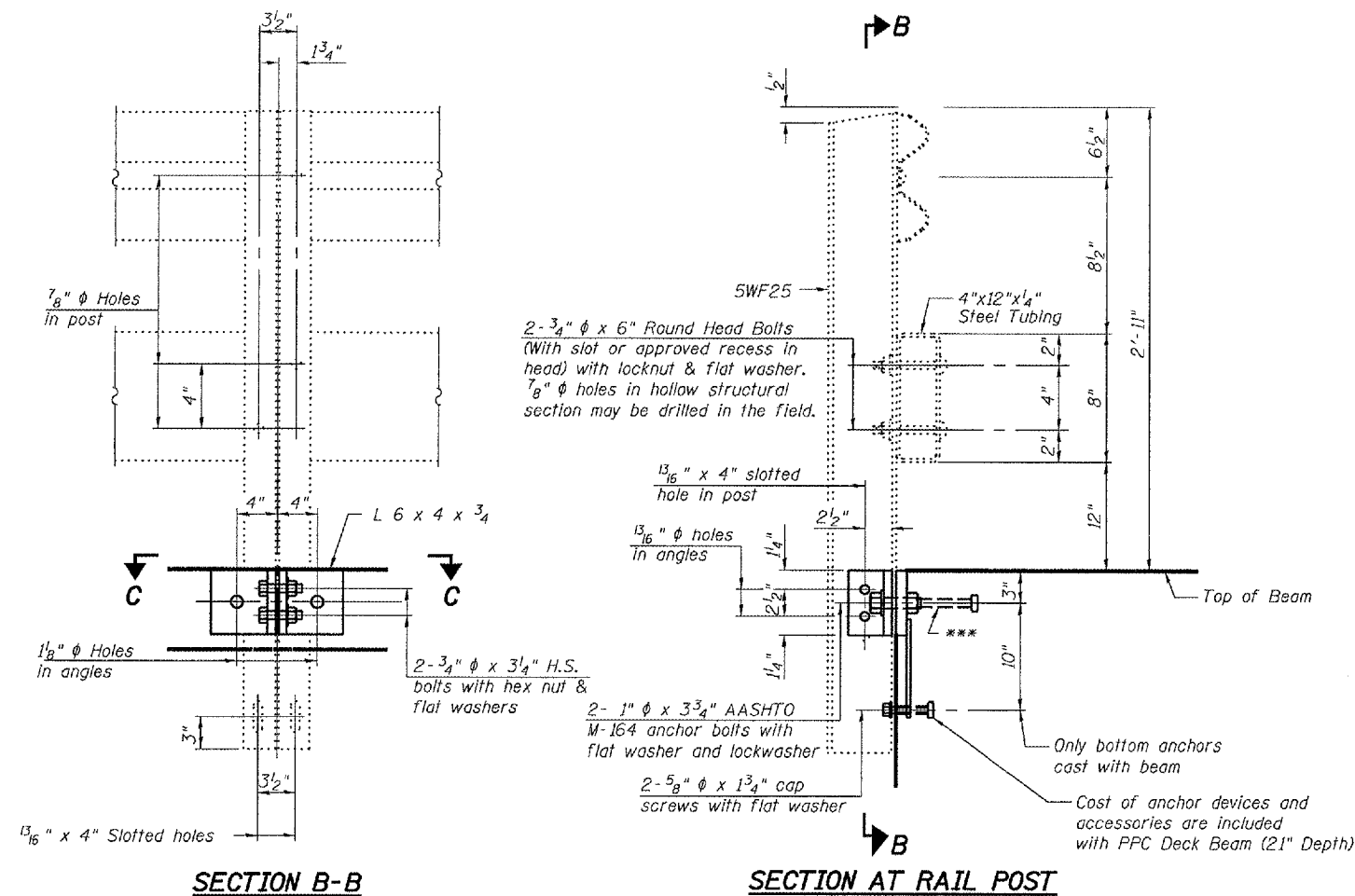
DESIGNED	V.H.V.
CHECKED	A.J.B.
DRAWN	Drew Christopher
CHECKED	V.H.V. A.J.B.

February 26, 2008
EXAMINED *Carl Hoyer*
ENGINEER OF STRUCTURAL SERVICES
PASSED *Ralph E. Anderson*
ENGINEER OF BRIDGES AND STRUCTURES

STATE OF ILLINOIS
DEPARTMENT OF TRANSPORTATION

ROUTE NO.	SECTION	COUNTY	SHEET NO.	SHEET TOTAL	SHEET NO.
		Henderson	15	15	3
FED. ROAD DIST. NO. 7		ILL. HIGHWAY	FED. ROAD PROJECT		

Contract Number: 68771



Notes:

All field drilled holes shall be coated with an approved zinc rich paint before erection.

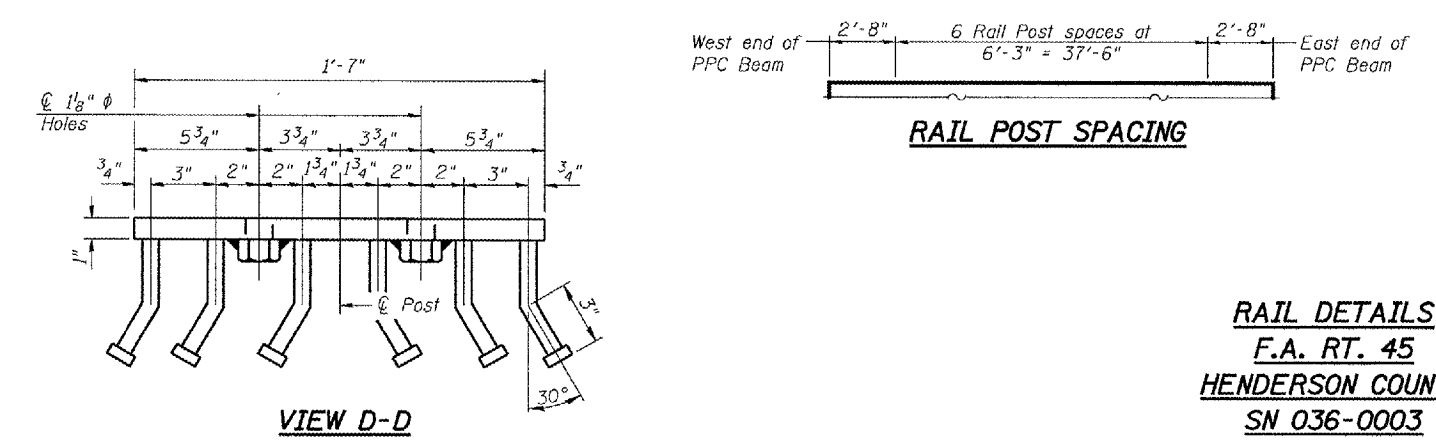
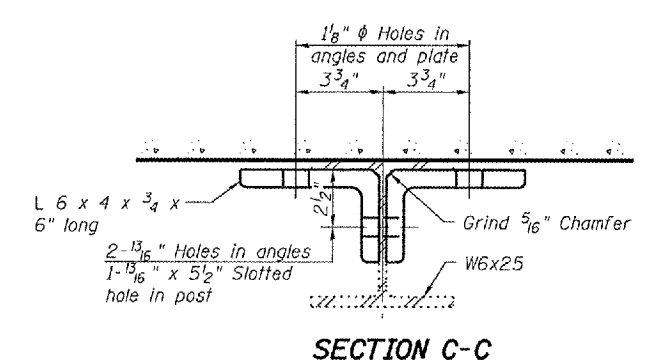
For multi-span bridges, sufficient 1/4" x 6" x 1'-2" galvanized steel shims shall be provided to align rail between adjacent spans. Cost included with PPC Deck Beam (21" Depth).

All steel rail members shall be galvanized according to Article 509.05 of the Standard Specifications.

***The studs of the anchor devices shall be placed below the top reinforcement bars and the outermost longitudinal reinforcement bar shall be placed directly above the studs of the rail post anchor device.

* Threaded areas shall be plugged or blocked off during casting of beam. Galvanized after fabrication.

** Whenever the lower insert assemblies interfere with strand locations, the #3 bars shall be adjusted in order to allow raising or lowering of the lower inserts. Maximum adjustment not to exceed 1/2".



DESIGNED	V.H.V.
CHECKED	A.J.B.
DRAWN	Drew Christopher
CHECKED	V.H.V. A.J.B.

February 26, 2008

EXAMINED *Carl Krueger*
ENGINEER OF STRUCTURAL SERVICES

PASSED *Ralph E. Anderson*
ENGINEER OF BRIDGES AND STRUCTURES

RAIL DETAILS
F.A. RT. 45
HENDERSON COUNTY
SN 036-0003