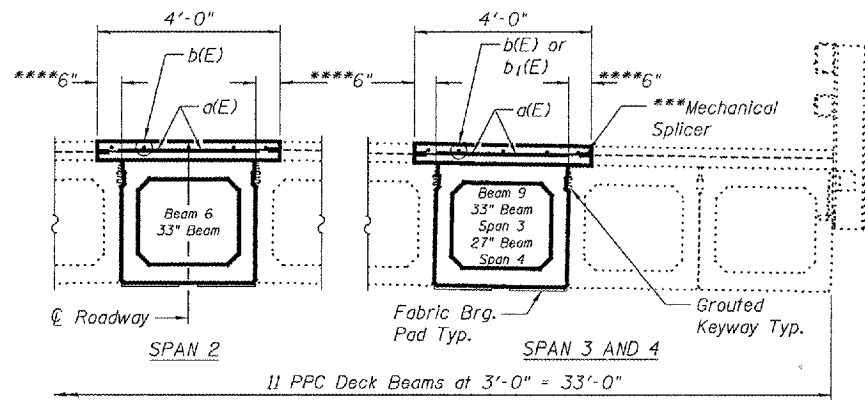


STATE OF ILLINOIS  
DEPARTMENT OF TRANSPORTATION

ROUTE NO.	SECTION	COUNTY	TOTAL SHEETS	SHEET	SHEET NO. 3
639		Mercer	15	15	3 SHEETS
FED. ROAD DIST. NO. 7	PLAN NO.	FED. AID PROJECT			

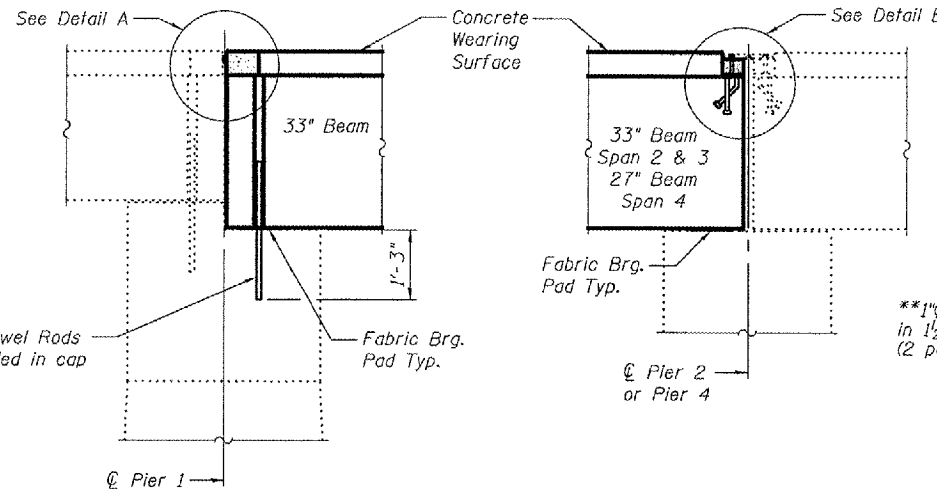
Contract Number: 68772



**PARTIAL DECK CROSS SECTION**

\*\*\*Attach existing reinforcement with mechanical splicers. Existing reinforcement to extend 6" min into removal area to allow attachment of splicers.  
\*\*\*Limits of Concrete Wearing Surface Removal.

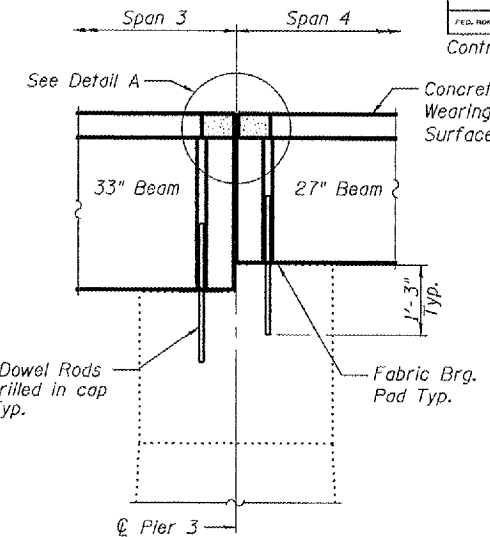
\*\*1"φ x 2'-6" Dowel Rods in 1 1/2"φ holes drilled in cap (2 per beam)



**PIER 1 SECTION**

**PIER 2 & 4 SECTION**

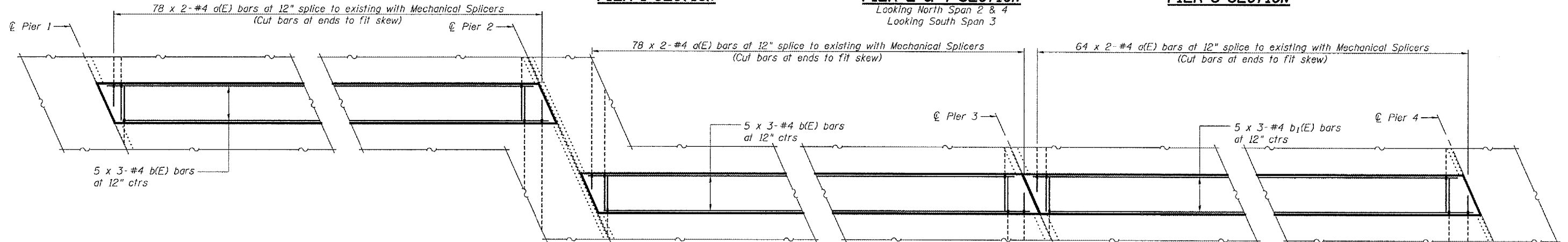
Looking North Span 2 & 4  
Looking South Span 3



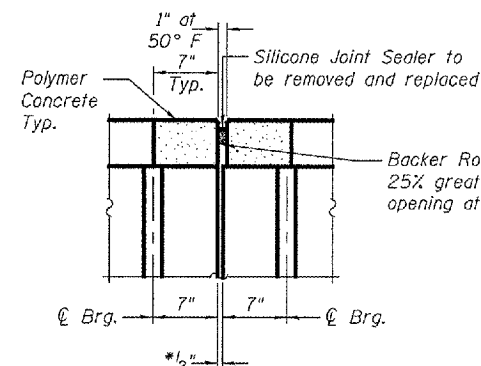
**PIER 3 SECTION**

\*1/2" Joint shall be filled with non-shrink grout. Dimension may vary to accommodate tolerance in beam lengths.  
\*\*Existing dowel rods are to be burned off, ground flush, and sealed with epoxy prior to placement of new beams. Cost included in Removal of Existing PPC Deck Beams. After beams have been erected holes shall be drilled into cap and dowel rods placed. Dowel holes shall be filled with non-shrink grout to top of beam and allowed to cure a minimum of 24 hours prior to grouting the shear keys.

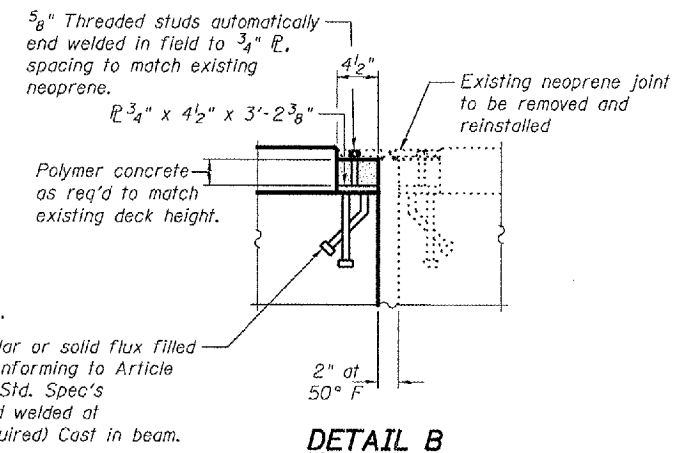
**Min. Bar Lap**  
#4 = 1'-4"



**PARTIAL WEARING SURFACE PLAN**



**DETAIL A**



**DETAIL B**

**BILL OF MATERIAL**

Bar	No.	Size	Length	Shape	
a(E)	440	#4	3'-0"	—	
b(E)	30	#4	27'-2"	—	
b <sub>1</sub> (E)	15	#4	22'-6"	—	
Concrete Wearing Surface Removal				Sq. Yd.	24.1
Concrete Wearing Surface				Sq. Yd.	96.2
Reinforcement Bars, Epoxy Coated				Pound	1,650

Bars indicated thus 5 x 3-#5 etc. indicates 5 lines of bars with 3 lengths per line.

DESIGNED	V.H.V.
CHECKED	A.T.H.
DRAWN	Drew Christopher
CHECKED	V.H.V. A.T.H.

February 26, 2008  
EXAMINED *[Signature]*  
PASSED *[Signature]*  
ENGINEER OF STRUCTURAL SERVICES  
ENGINEER OF BRIDGES AND STRUCTURES

**BEAM DETAILS**  
**F.A.P. RT. 639**  
**MERCER COUNTY**  
**SN 066-0006**