

F.A.P. RTE.	SECTION	COUNTY	TOTAL SHEETS	SHEET NO.
685/310	(37B)I; (38B-2)I	MCDONOUGH	14	1
FED. ROAD DIST. NO. 4		IL 9/US 67	CONTRACT NO. 68779	

**STATE OF ILLINOIS**  
**DEPARTMENT OF TRANSPORTATION**  
**DIVISION OF HIGHWAYS**

**PROPOSED**  
**HIGHWAY PLANS**

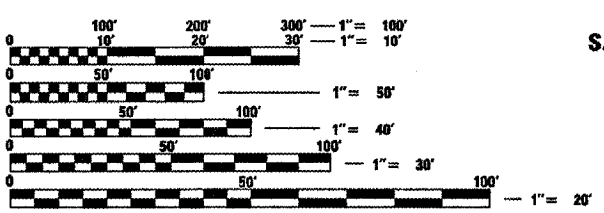
FAP ROUTE 685 (IL 9), FAP 310 (US 67)  
SECTION (37B)I; (38B-2)I  
MCDONOUGH COUNTY  
EMERGENCY BRIDGE REPAIRS  
C-94-018-08

- INDEX OF SHEETS**
- 1 COVER SHEET
  - 2 COMMITMENTS & GENERAL NOTES
  - 3 SUMMARY OF QUANTITIES
  - 4 IL 9 TYPICAL SECTION
  - 5 US 67 TYPICAL SECTIONS
  - 6 SCHEDULE OF QUANTITIES
  - 7 US 67 STAGING PLANS
  - 8-9 IL 9 BRIDGE PLANS
  - 10-14 US 67 BRIDGE PLANS

- LIST OF STANDARDS**
- 701201-02 701901
  - 701301-02 704001-04
  - 701400-02 780001-0A
  - 701423-02 781001-02

**DESIGN DESIGNATION**

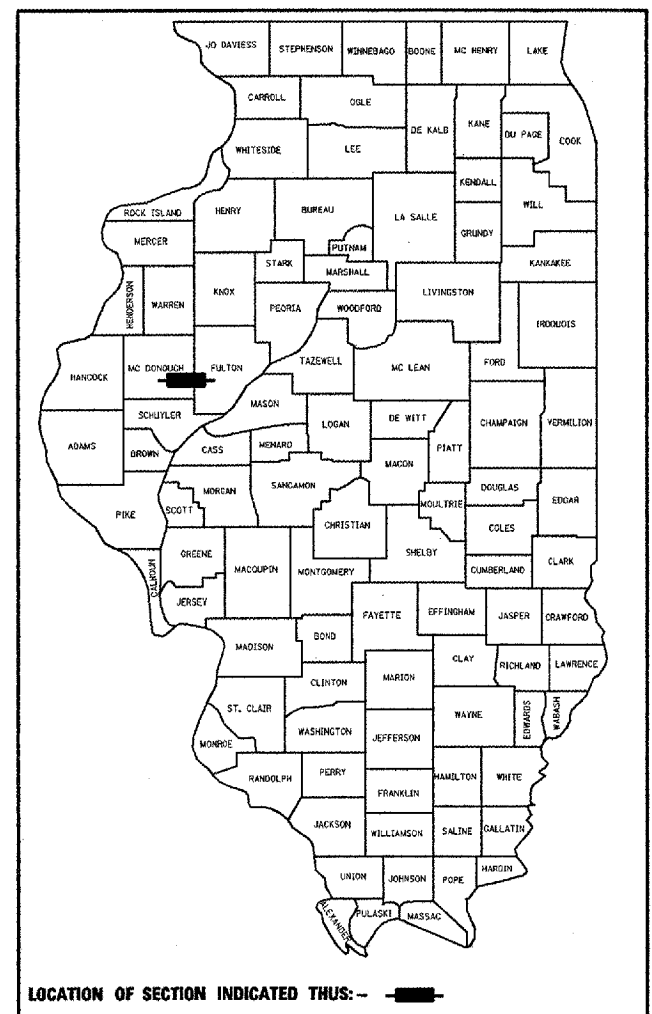
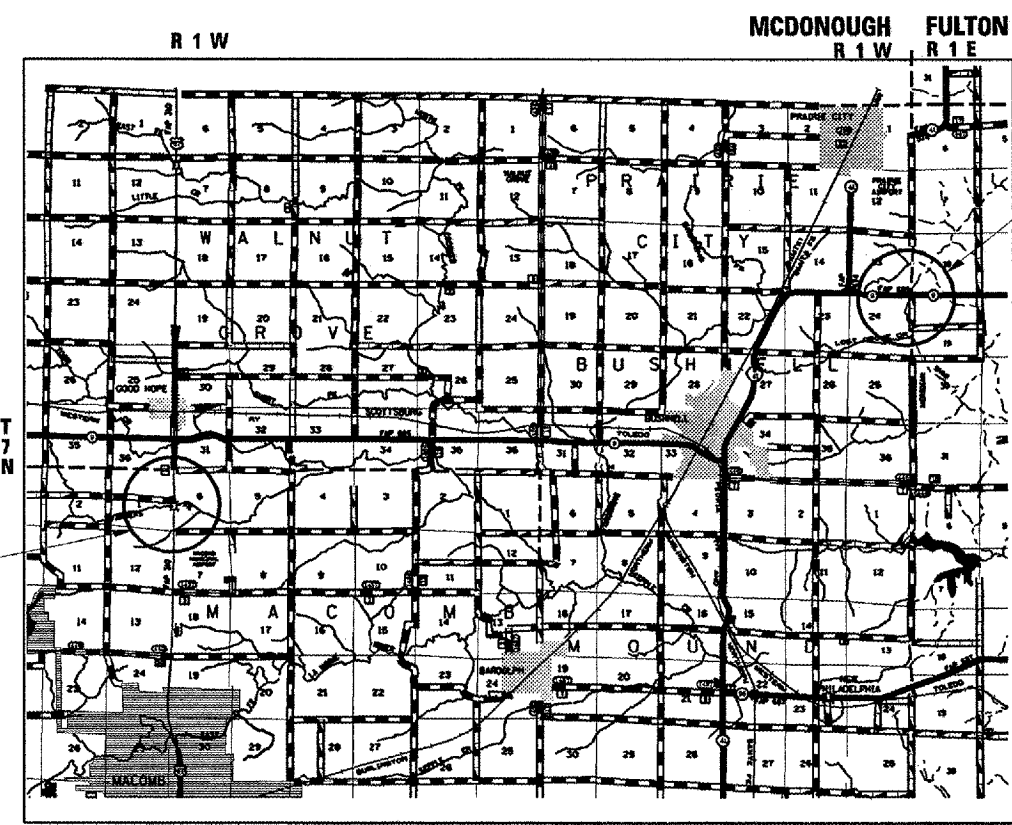
<b>US 67</b>	<b>IL 9</b>
ADT = 8,900 (2007)	ADT = 950 (2007)
MU = 550	MU = 80
SU = 350	SU = 70



FULL SIZE PLANS HAVE BEEN PREPARED USING STANDARD ENGINEERING SCALES. REDUCED SIZED PLANS WILL NOT CONFORM TO STANDARD SCALES. IN MAKING MEASUREMENTS ON REDUCED PLANS, THE ABOVE SCALES MAY BE USED.

J.U.L.I.E.  
JOINT UTILITY LOCATION INFORMATION FOR EXCAVATION  
1-800-892-0123  
OR 811

PROJECT DESIGNER TERRISA WORSFOLD  
PROJECT ENGINEER RICH DOTSON  
CONTRACT NO. 68779



**DESCRIPTION:**  
EMERGENCY BRIDGE REPAIRS - BRACING 2 BEAMS ON STRUCTURE CARRYING IL 9 OVER LOST GROVE CREEK (055-0019), 0.8 MILES EAST OF IL 41 (N) AND REPLACEMENT OF 2 BEAMS ON NORTHBOUND STRUCTURE CARRYING US 67 OVER FARMER'S CREEK FORK (S.N. 055-0003), 1 MILE SOUTH OF IL 9.

STATE OF ILLINOIS  
DEPARTMENT OF TRANSPORTATION  
DIVISION OF HIGHWAYS

SUBMITTED *Feb 6 20 08*

*[Signature]*  
DEPUTY DIRECTOR OF HIGHWAYS, REGION ENGINEER

*March 21 20 08*  
Eric E. Harn/10  
ENGINEER OF DESIGN AND ENVIRONMENT

*March 21 20 08*  
Christina M. Reed/10  
DIRECTOR OF HIGHWAYS, CHIEF ENGINEER

**PRINTED BY THE AUTHORITY  
OF THE STATE OF ILLINOIS**

GROSS LENGTH OF PROJECT 460 FT (0.09 MILES)  
NET LENGTH OF PROJECT 460 FT (0.09 MILES)