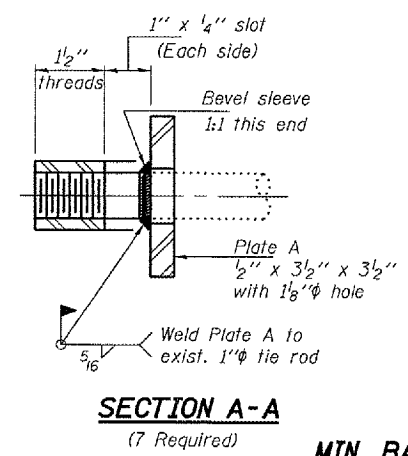
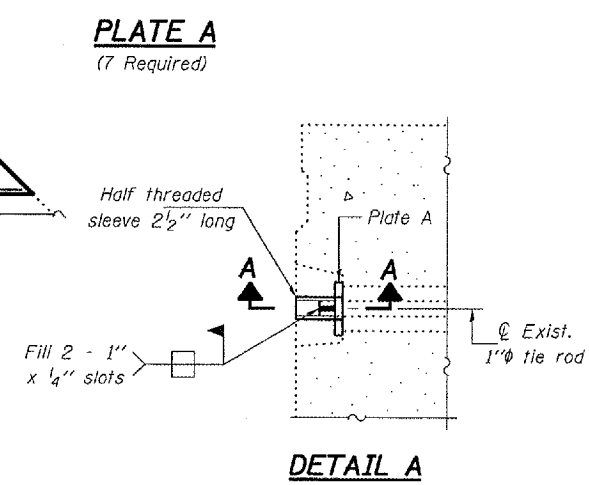
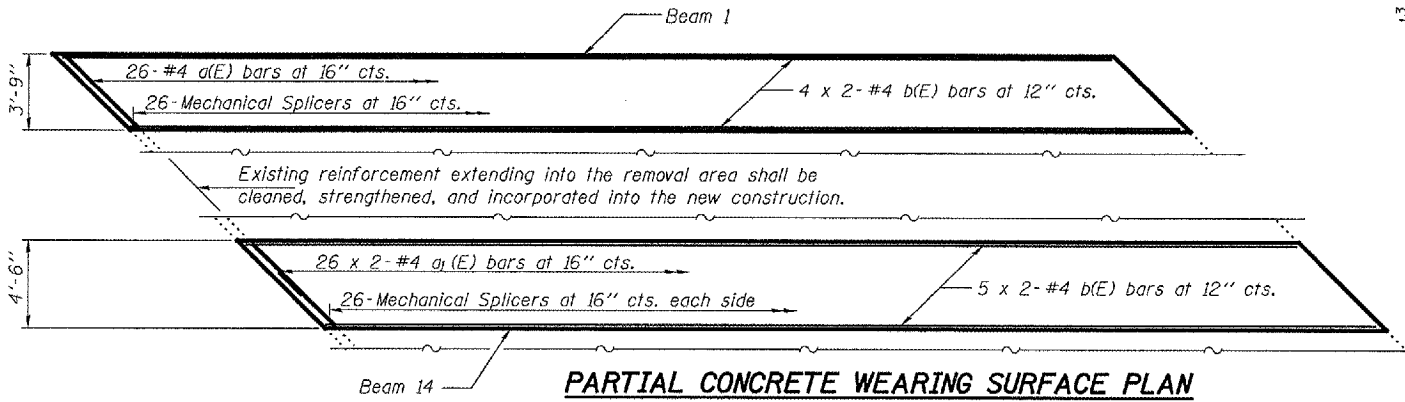
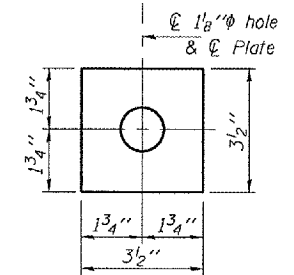
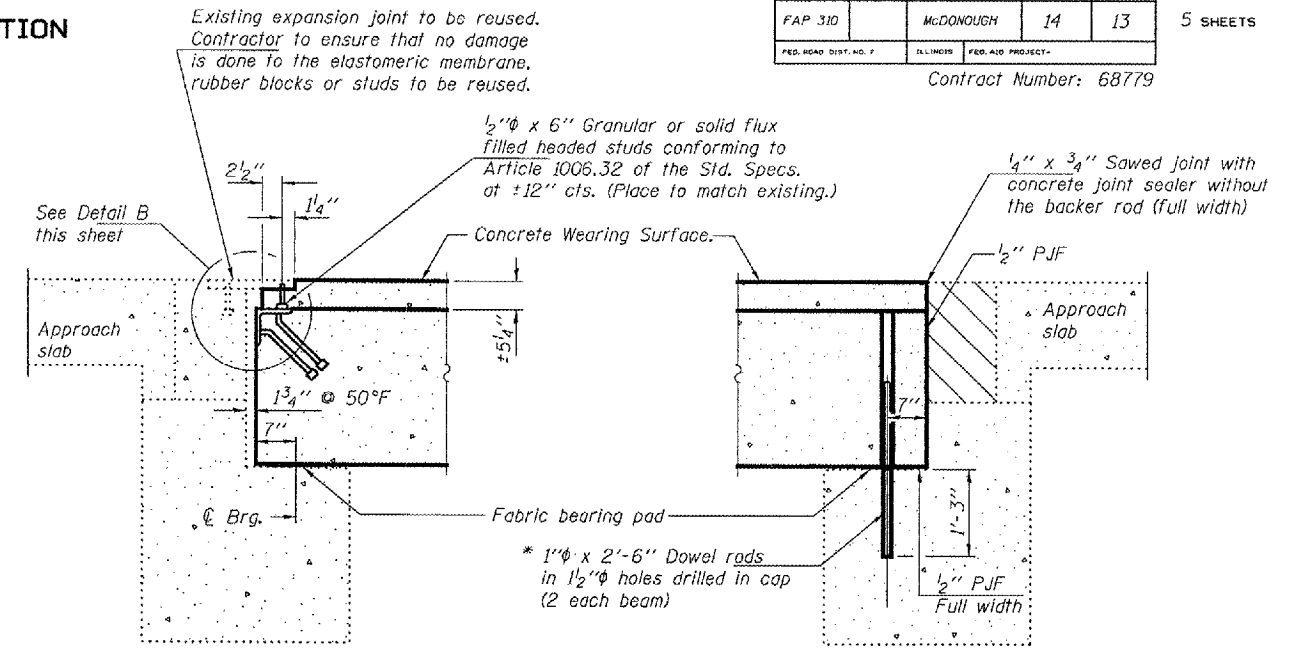
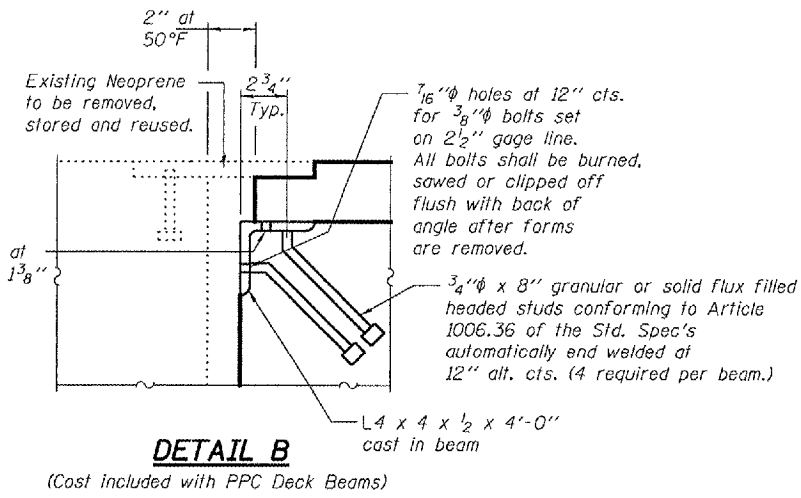


STATE OF ILLINOIS
DEPARTMENT OF TRANSPORTATION

ROUTE NO.	SECTION	COUNTY	DATE	SHEET NO.
FAP 310		MCDONOUGH	14	13
FED. ROAD DIST. NO. 7	ILLINOIS	FED. AID PROJECT-		

Contract Number: 68779

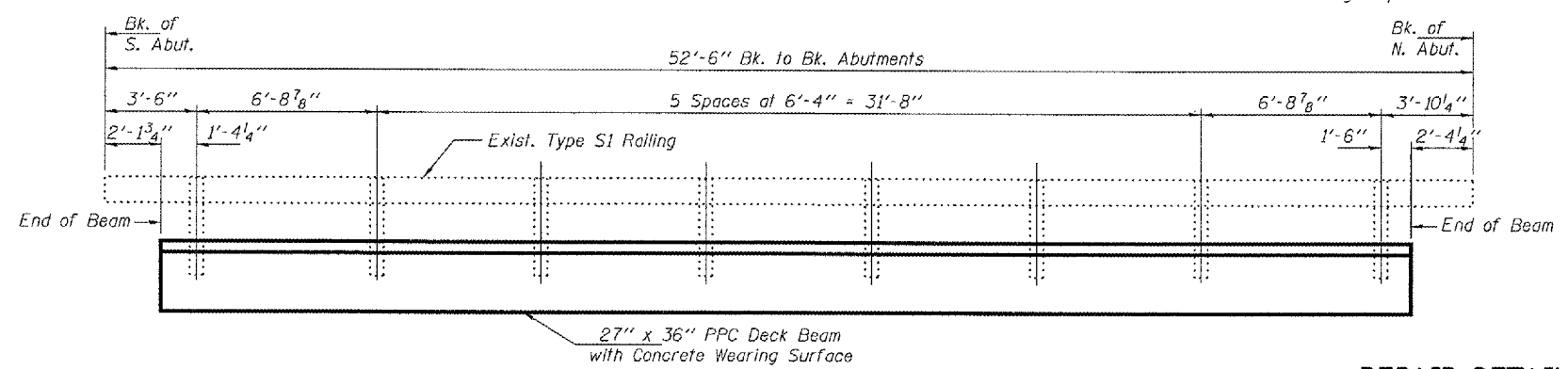
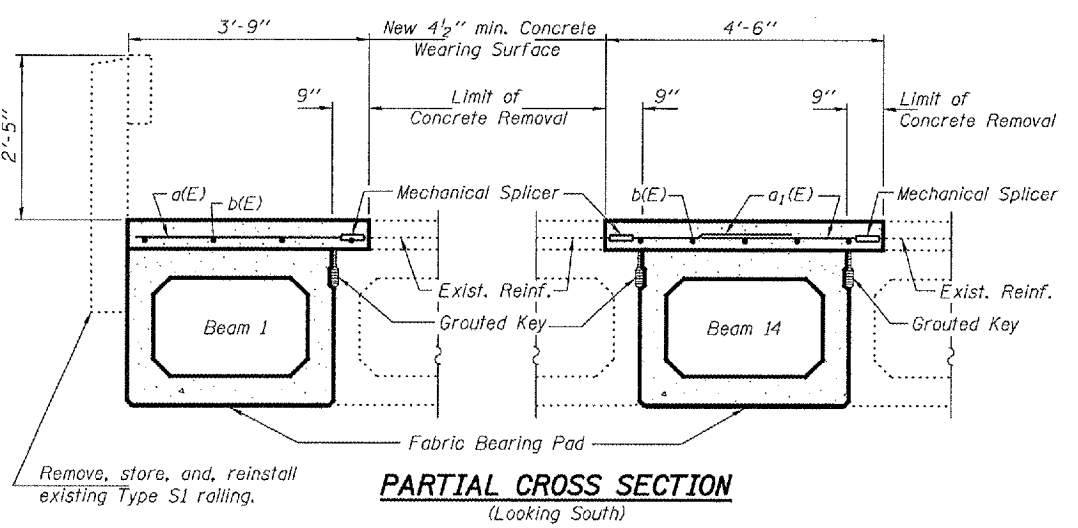


* Existing dowel rods are to be burned off, ground flush, and sealed with epoxy prior to placement of new beams. Cost included in Removal of Existing PPC Deck Beams. After beams have been erected holes shall be drilled into cap and dowel rods placed. Dowel holes shall be filled with non-shrink grout to top of beam and allowed to cure a minimum of 24 hours prior to grouting the shear keys.

BILL OF MATERIAL

Bar	No.	Size	Length	Shape	
a(E)	26	#4	5'-0"	—	
a1(E)	52	#4	3'-11"	—	
b(E)	18	#4	24'-9"	—	
Reinforcement Bars, Epoxy Coated				Pounds	520

Bars indicated thus 4 x 2-#4 etc. indicates 4 line of bars with 2 lengths per line.



DESIGNED	VHV
CHECKED	ATH
DRAWN	Steffen
CHECKED	VHV ATH

FEBRUARY 26, 2008
EXAMINED *Carl Perry*
ENGINEER OF STRUCTURAL SERVICES
PASSED *Ralph E. Anderson*
ENGINEER OF BRIDGES AND STRUCTURES

REPAIR DETAILS
FAP RT. 310 OVER
FARMERS CREEK
MCDONOUGH COUNTY
SN 055-0003