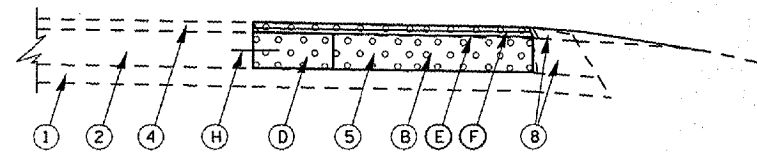
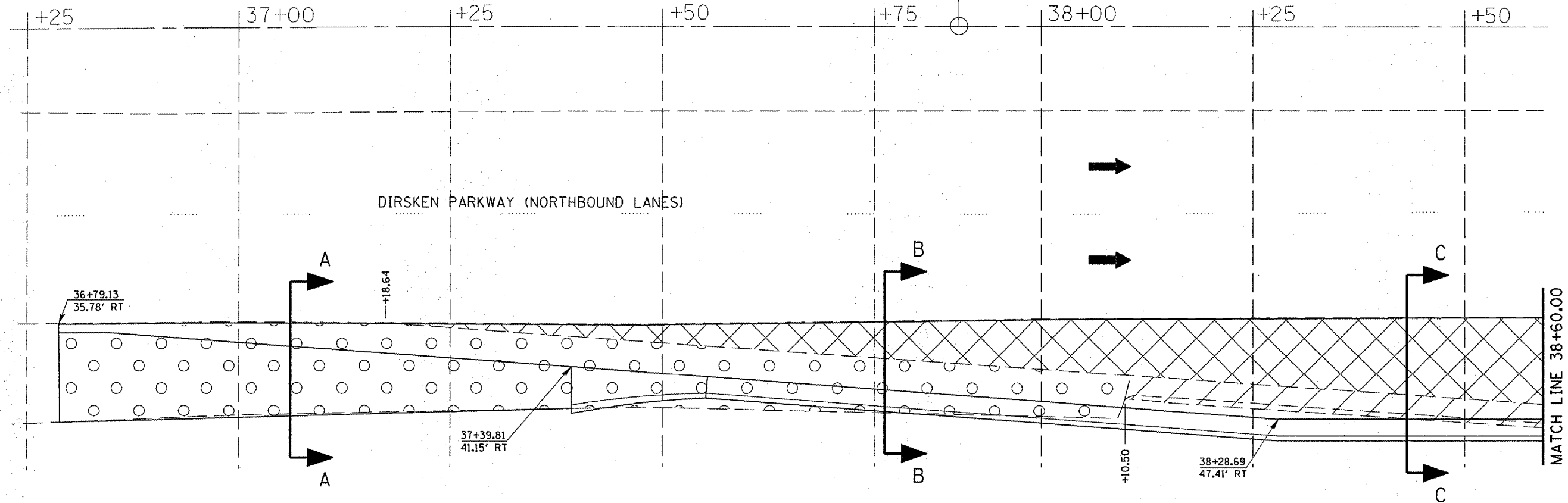
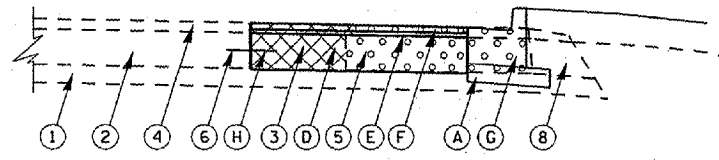


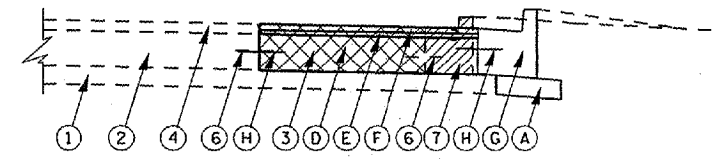
STATION EQUATION:
P.T. STA. 37+85.06 BACK =
P.O.T. STA. 37+90.25 AHEAD



SECTION A-A



SECTION B-B



SECTION C-C

LEGEND		
① EXISTING STABILIZED SUB-BASE MATERIAL, 4"	Ⓐ PROPOSED SUB-BASE GRANULAR MATERIAL, TYPE A, 4"	PROPOSED PAVEMENT REMOVAL (TOTAL, THIS SHEET, TURN LANE = 77.86 SQ YD)
② EXISTING CONTINUOUSLY REINFORCED PORTLAND CEMENT CONCRETE, 7"	Ⓑ PROPOSED HOT-MIX ASPHALT SHOULDERS, 8"	PROPOSED BITUMINOUS SHOULDER REMOVAL (TOTAL, THIS SHEET = 120.18 SQ YD)
③ EXISTING CONTINUOUSLY REINFORCED PORTLAND CEMENT CONCRETE, 8"	Ⓒ PROPOSED P.C.C. BASE COURSE, 7"	PROPOSED CONCRETE CURB AND GUTTER REMOVAL (TOTAL, THIS SHEET = 49.50 FEET)
④ EXISTING BITUMINOUS CONCRETE SURFACE COURSE, + 2 1/2"	Ⓓ PROPOSED P.C.C. PAVEMENT, 8"	PROPOSED CONCRETE SIDEWALK REMOVAL (TOTAL, THIS SHEET = 0.00 SQ FT)
⑤ EXISTING BITUMINOUS CONCRETE SHOULDER, 8"	Ⓔ PROPOSED LEVELING BINDER, 1"	
⑥ EXISTING TIE BARS, #4, @ 30" CENTERS	Ⓕ PROPOSED HOT-MIX ASPHALT SURFACE COURSE, 1 1/2"	
⑦ EXISTING COMBINATION CONCRETE CURB & GUTTER, TYPE B-6.18	Ⓖ PROPOSED COMBINATION CONCRETE CURB & GUTTER, TYPE B-6.24	
⑧ EXISTING AGGREGATE SHOULDERS	Ⓗ PROPOSED TIE BARS, 4", @ 30" CENTERS	
⑨ EXISTING UNREINFORCED PCC PAVEMENT, 7"	Ⓖ PROPOSED PCC SIDEWALK, 4"	
	Ⓙ PROPOSED HOT-MIX ASPHALT SURFACE REMOVAL, 1 1/2"	

