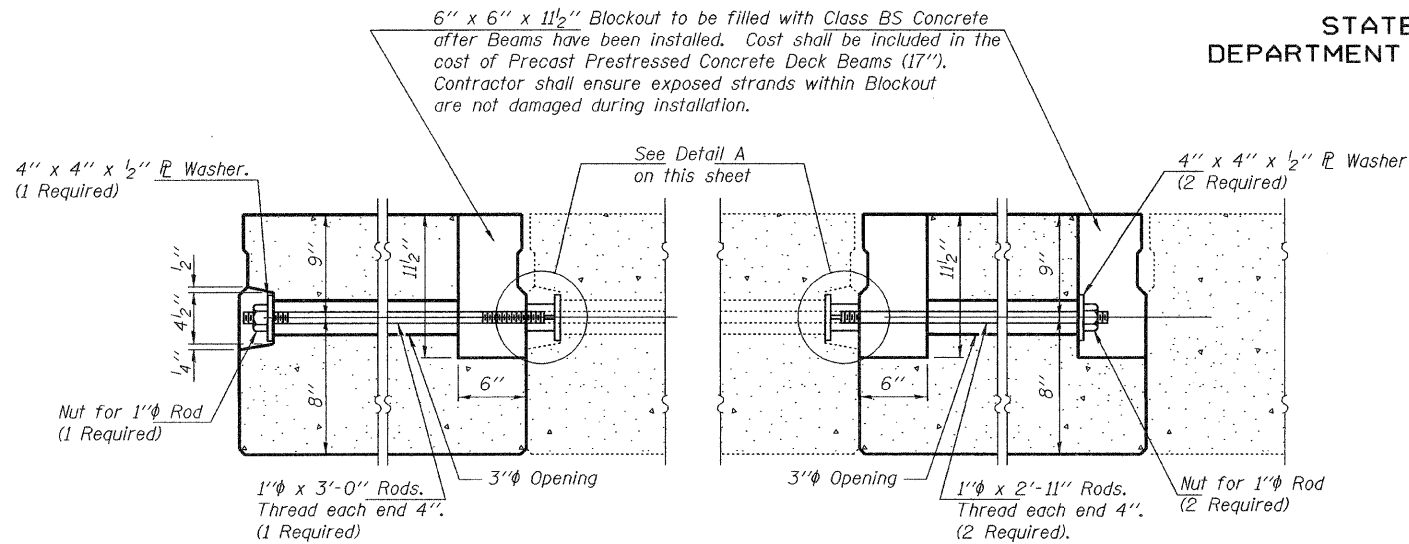


STATE OF ILLINOIS  
DEPARTMENT OF TRANSPORTATION

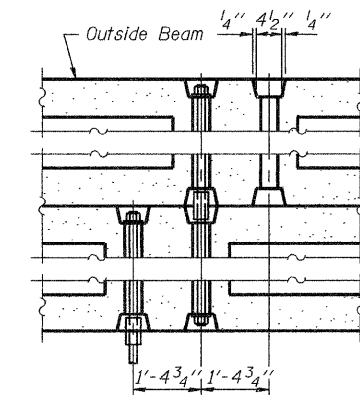
ROUTE NO.	SECTION	COUNTY	TOTAL SHEETS	SHEET NO.	SHEET NO. 3 4 SHEETS
		MOULTRIE & SHELBY	8	7	
FED. ROAD DIST. NO. 7	ILLINOIS	FED. AID PROJECT			

Contract Number: 74302

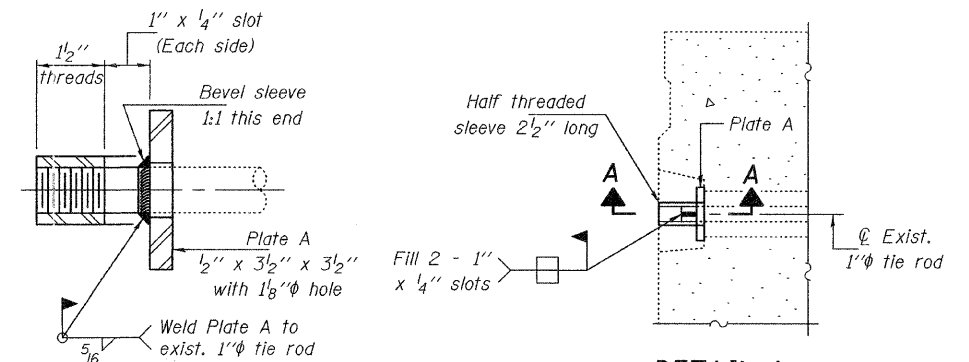


**TRANSVERSE TIE ASSEMBLY**  
(Typ. Span 1 Beam 1 Replacement)

**TRANSVERSE TIE ASSEMBLY**  
(Typ. Span 1 Beam 7 Replacement)

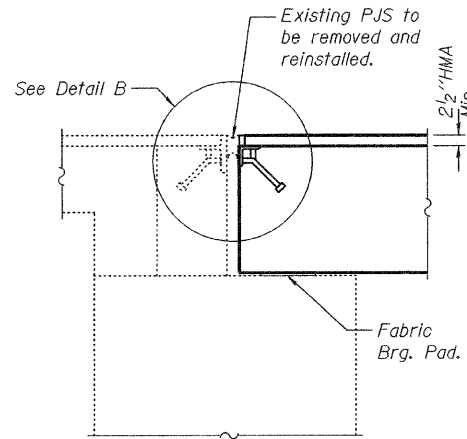


**TRANSVERSE TIE ASSEMBLY**

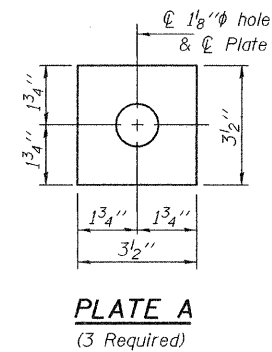


**SECTION A-A**  
(3 Required)

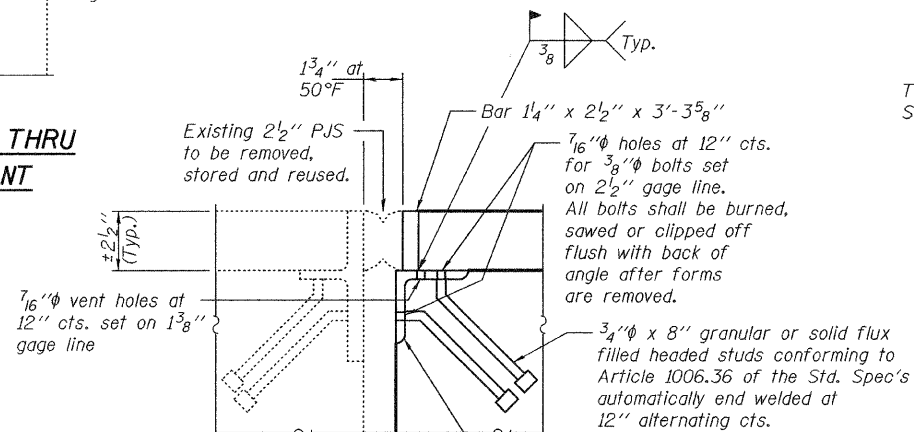
**DETAIL A**



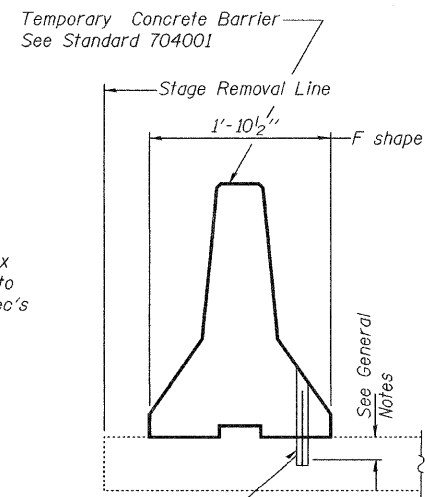
**TYPICAL SECTION THRU SOUTH ABUTMENT**



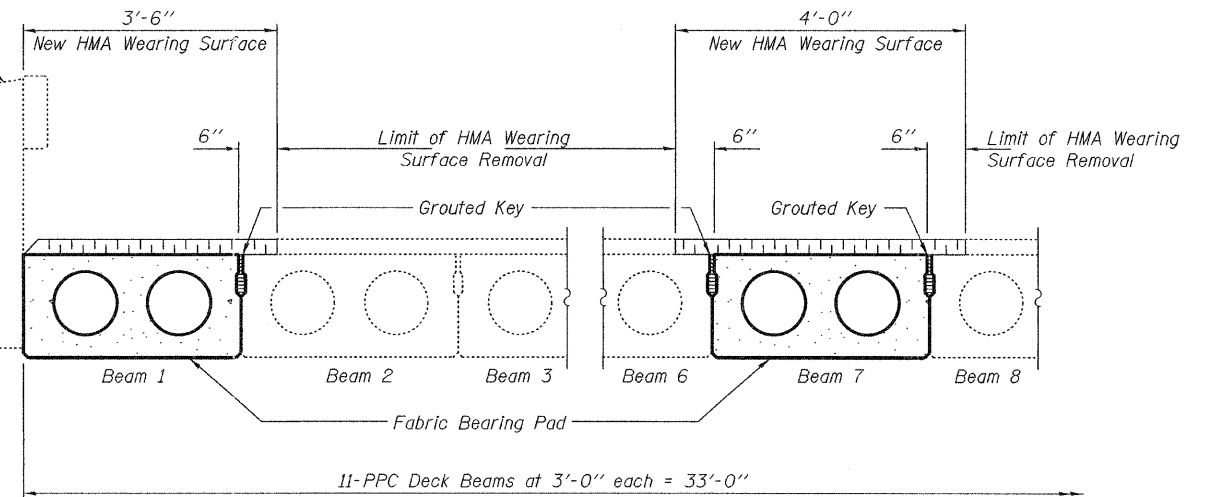
**PLATE A**  
(3 Required)



**DETAIL B**  
(Cost included with PPC Deck Beams)

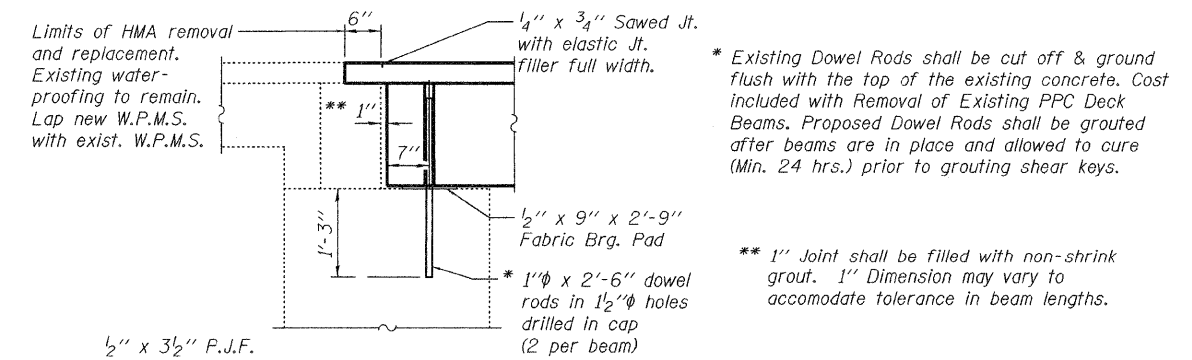


**TEMPORARY CONCRETE BARRIER**



**TYPICAL SECTION THRU NORTH ABUTMENT**

**REPAIR DETAILS**



\* Existing Dowel Rods shall be cut off & ground flush with the top of the existing concrete. Cost included with Removal of Existing PPC Deck Beams. Proposed Dowel Rods shall be grouted after beams are in place and allowed to cure (Min. 24 hrs.) prior to grouting shear keys.

\*\* 1" Joint shall be filled with non-shrink grout. 1" Dimension may vary to accommodate tolerance in beam lengths.

DESIGNED	ATH
CHECKED	AJB
DRAWN	Steffen
CHECKED	ATH AJB

MARCH 3, 2008  
EXAMINED *Carl Hoyer*  
ENGINEER OF STRUCTURAL SERVICES  
PASSED *Ralph E. Anderson*  
ENGINEER OF BRIDGES AND STRUCTURES

OVER BRUSH CREEK  
MOULTRIE & SHELBY COUNTIES  
SN 070-0018