

STATE OF ILLINOIS  
DEPARTMENT OF TRANSPORTATION

ROUTE NO.	SECTION	COUNTY	TOTAL SHEETS	SHEET NO.	SHEET NO. 4 4 SHEETS
		MOULTRIE & SHELBY	8	8	
FED. ROAD DIST. NO. 7	ILLINOIS		FED. AID PROJECT		

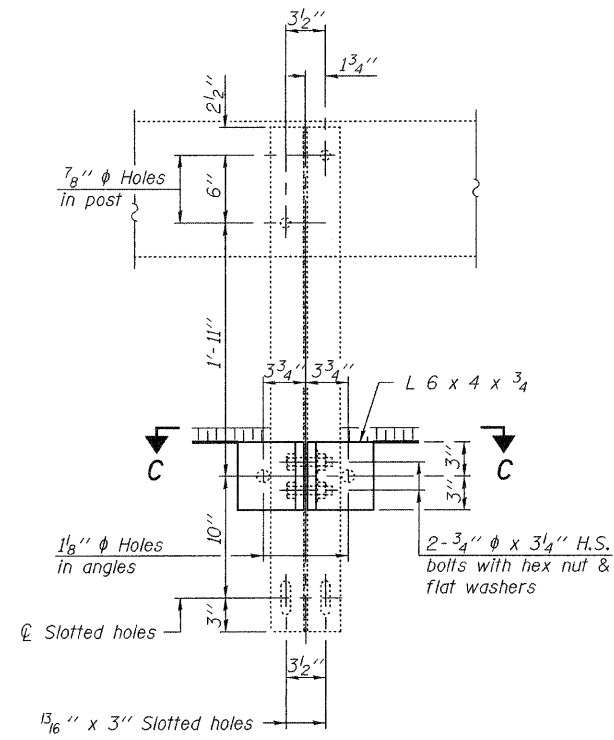
Contract Number: 74302

Notes:  
All steel rail elements shall be galvanized according to Article 509.05 of the Standard Specifications.

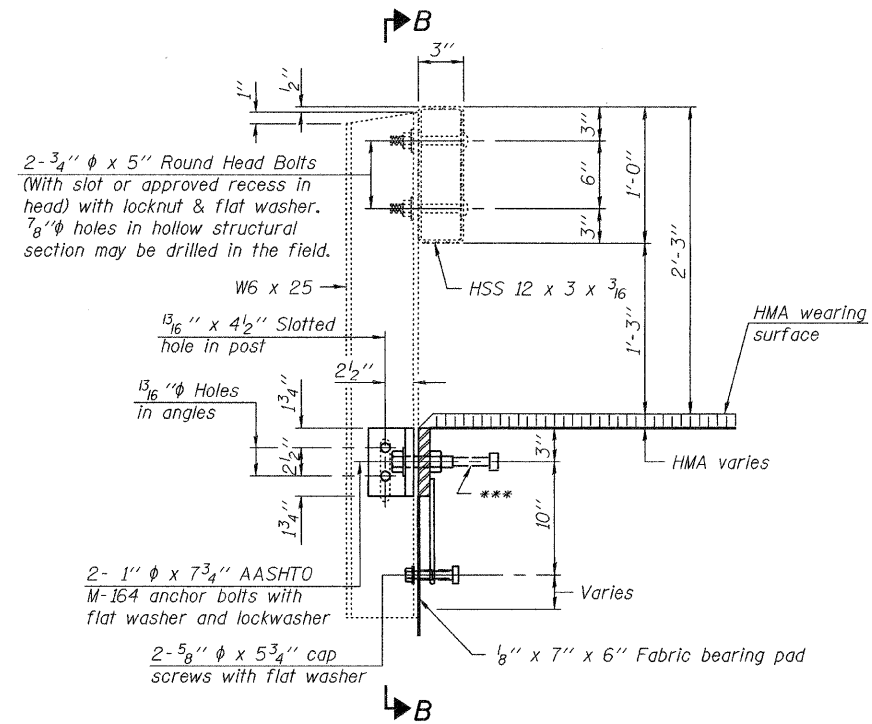
\* Threaded areas shall be plugged or blocked off during casting of beam.

\*\* Whenever the lower insert assemblies interfere with strand locations, the #3 bars shall be cut and adjusted in order to allow raising or lowering of the lower inserts. Maximum adjustment not to exceed 1/2".

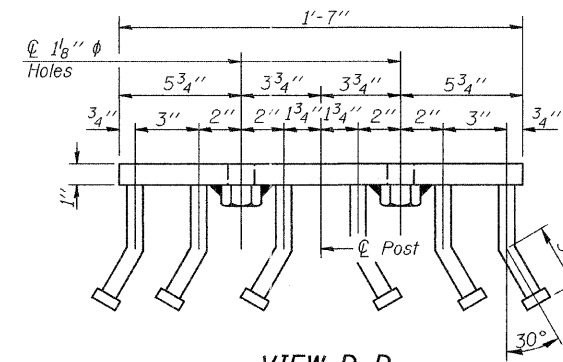
\*\*\* The studs of the anchor devices shall be placed below the top reinforcement bars and the outermost longitudinal reinforcement bar shall be placed directly above the studs of the rail post anchor device.



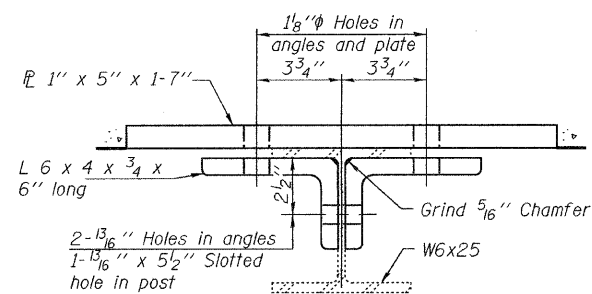
SECTION B-B



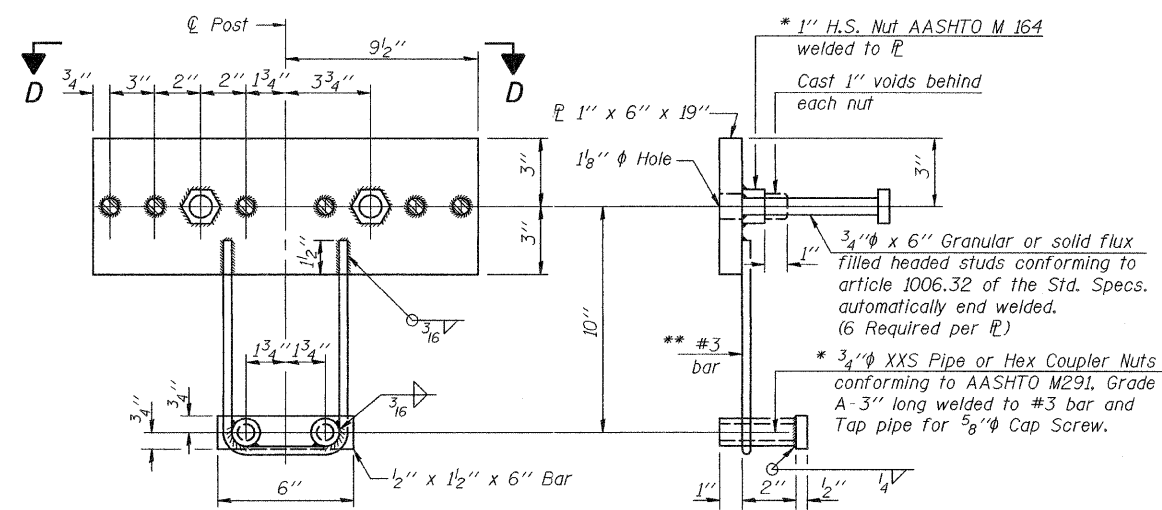
SECTION AT RAILING POST



VIEW D-D



SECTION C-C



ANCHOR DEVICE

REPAIR DETAILS

OVER BRUSH CREEK  
MOULTRIE & SHELBY COUNTIES  
SN 070-0018

DESIGNED	ATH
CHECKED	AJB
DRAWN	Steffen
CHECKED	ATH AJB

MARCH 3, 2008  
EXAMINED *Carl Hoyer*  
ENGINEER OF STRUCTURAL SERVICES  
PASSED *Ralph E. Anderson*  
ENGINEER OF BRIDGES AND STRUCTURES