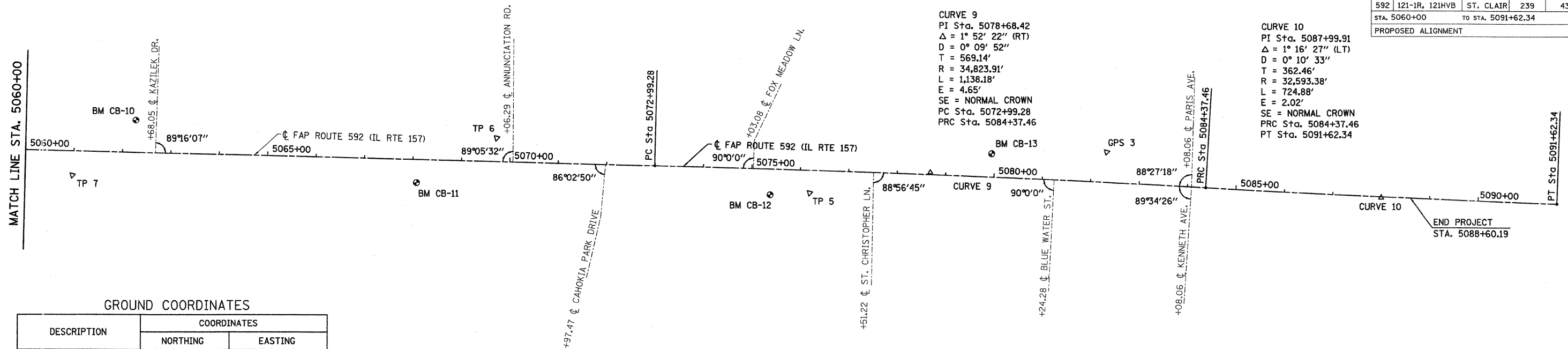


FAP ROUTE	SECTION	COUNTY	TOTAL SHEETS	SHEET NO
592	121-1R, 121HVB	ST. CLAIR	239	43
STA. 5060+00		TO STA. 5091+62.34		
PROPOSED ALIGNMENT				

CURVE 9
 PI Sta. 5078+68.42
 $\Delta = 1^\circ 52' 22''$ (RT)
 $D = 0^\circ 09' 52''$
 $T = 569.14'$
 $R = 34,823.91'$
 $L = 1,138.18'$
 $E = 4.65'$
 SE = NORMAL CROWN
 PC Sta. 5072+99.28
 PRC Sta. 5084+37.46

CURVE 10
 PI Sta. 5087+99.91
 $\Delta = 1^\circ 16' 27''$ (LT)
 $D = 0^\circ 10' 33''$
 $T = 362.46'$
 $R = 32,593.38'$
 $L = 724.88'$
 $E = 2.02'$
 SE = NORMAL CROWN
 PRC Sta. 5084+37.46
 PT Sta. 5091+62.34



GROUND COORDINATES

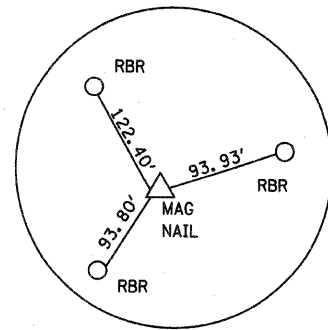
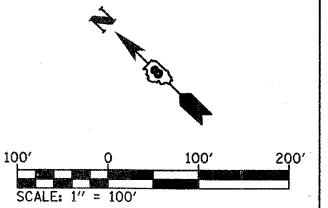
DESCRIPTION	COORDINATES	
	NORTHING	EASTING
GPS 3	687,606.8724	2,296,674.8450
TP 5	687,986.8406	2,296,186.3938
TP 6	688,525.6635	2,295,813.0230
TP 7	689,097.8730	2,295,145.0371
PC STA. 5072+99.28	688,253.7891	2,296,001.9998
PI STA. 5078+68.42	687,838.0095	2,296,390.6470
PRC STA. 5084+37.46	687,409.7517	2,296,765.4999
PI STA. 5087+99.91	687,137.0156	2,297,004.2251
POT STA. 5088+60.19	687,093.5175	2,297,045.9710
PT STA. 5091+62.34	686,869.6558	2,297,248.9565

BM CB-10 - CHISLED 'X' WEST CAP BOLT OF FIRE HYDRANT NEXT TO V IN VILLE, NW QUAD EX. IL RTE 157 AND KAZILEK DRIVE. STA. 5062+27 OFFSET 66' LT. ELEVATION = 412.31

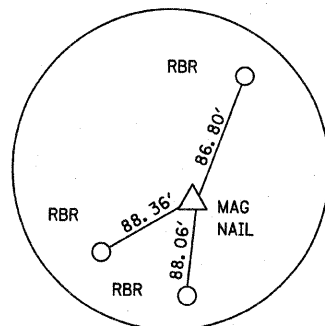
BM CB-11 - RR SPIKE IN NORTH SIDE OF POWER POLE WITH LIGHT, EAST OF ENT. TO CAHOKIA PARK UNITED METHODIST CHURCH, SOUTH SIDE EX. IL RTE 157. STA. 5068+08 OFFSET 48' RT. ELEVATION = 409.75

BM CB-12 - CHISLED SQ. WEST END CONC. HEADWALL OF TWIN CULVERT CROSSING EX. IL RTE 157, SW QUAD OF EX. IL RTE 157 AND ST. CHRISTOPHER ROAD. STA. 5075+39 OFFSET 53' RT. ELEVATION = 404.87

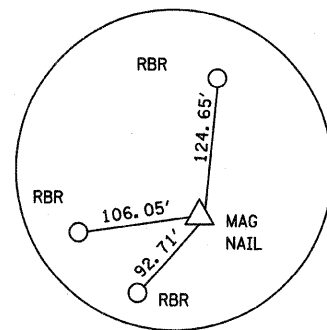
BM CB-13 - CHISLED SQ. TOP BACK OF CURB EAST SIDE OF WEST ENTRANCE TO WAL MART NEAR N. RAD. PT. ON NORTH SIDE OF EX. IL RTE 157. STA. 5079+93 OFFSET 48' LT. ELEVATION = 408.44



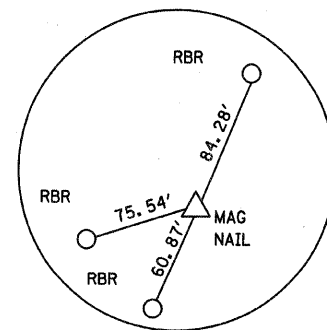
P.C. STA. 5072+99.28
MAGNAIL



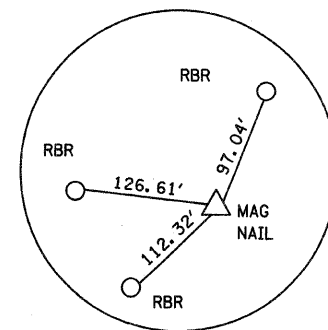
P.I. STA. 5078+68.42
MAGNAIL



P.R.C. STA. 5084+37.46
MAGNAIL



P.I. STA. 5087+99.91
MAGNAIL



P.T. STA. 5091+62.34
MAGNAIL

PLOT DATE = 1/30/2008
 FILE NAME = H:\P\21015\MicroStation\Design\align\align.dgn
 PLOT SCALE = 50.0000' / 1" IN.
 USER NAME = #USER#

REVISIONS	
NAME	DATE

ILLINOIS DEPARTMENT OF TRANSPORTATION

HORIZONTAL ALIGNMENT AND SURVEY TIES

FAP ROUTE 592
 SECTION 121-1R, 121HVB
 COUNTY ST. CLAIR

DRAWN BY: _____