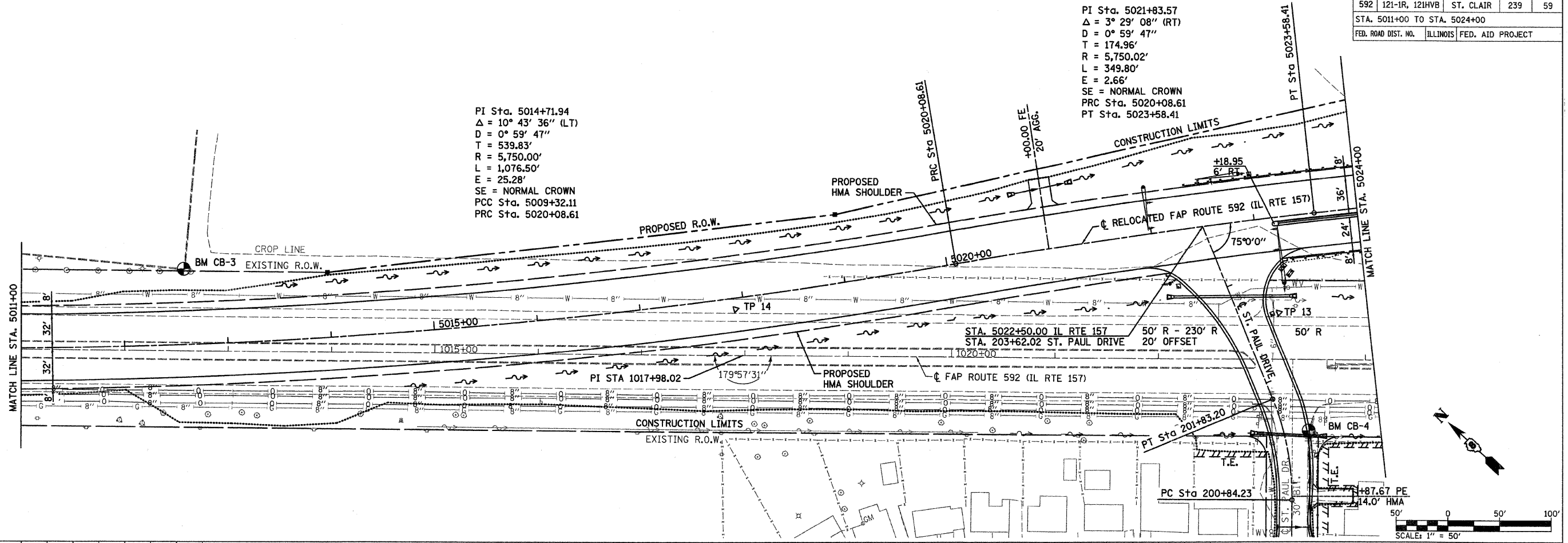


F.A.P. RTE.	SECTION	COUNTY	TOTAL SHEETS	SHEET NO.
592	121-1R, 121HVB	ST. CLAIR	239	59
STA. 5011+00 TO STA. 5024+00				
FED. ROAD DIST. NO. ILLINOIS FED. AID PROJECT				

PI Sta. 5021+83.57
 $\Delta = 3^\circ 29' 08''$ (RT)
 $D = 0^\circ 59' 47''$
 $T = 174.96'$
 $R = 5,750.02'$
 $L = 349.80'$
 $E = 2.66'$
 SE = NORMAL CROWN
 PRC Sta. 5020+08.61
 PT Sta. 5023+58.41

PI Sta. 5014+71.94
 $\Delta = 10^\circ 43' 36''$ (LT)
 $D = 0^\circ 59' 47''$
 $T = 539.83'$
 $R = 5,750.00'$
 $L = 1,076.50'$
 $E = 25.28'$
 SE = NORMAL CROWN
 PCC Sta. 5009+32.11
 PRC Sta. 5020+08.61



PLAN	DATE
SURVEYED	
NOTE BOOK	
NO.	

PROFILE	DATE
SURVEYED	
GRADES CHECKED	
NOTE BOOK	
NO.	

PLOT DATE = 03/22/2007
 FILE NAME = H:\P\2005\Microstation\Design\01r081a.dgn
 PLOT SCALE = 800000 / IN.
 USER NAME = RUCEN*

