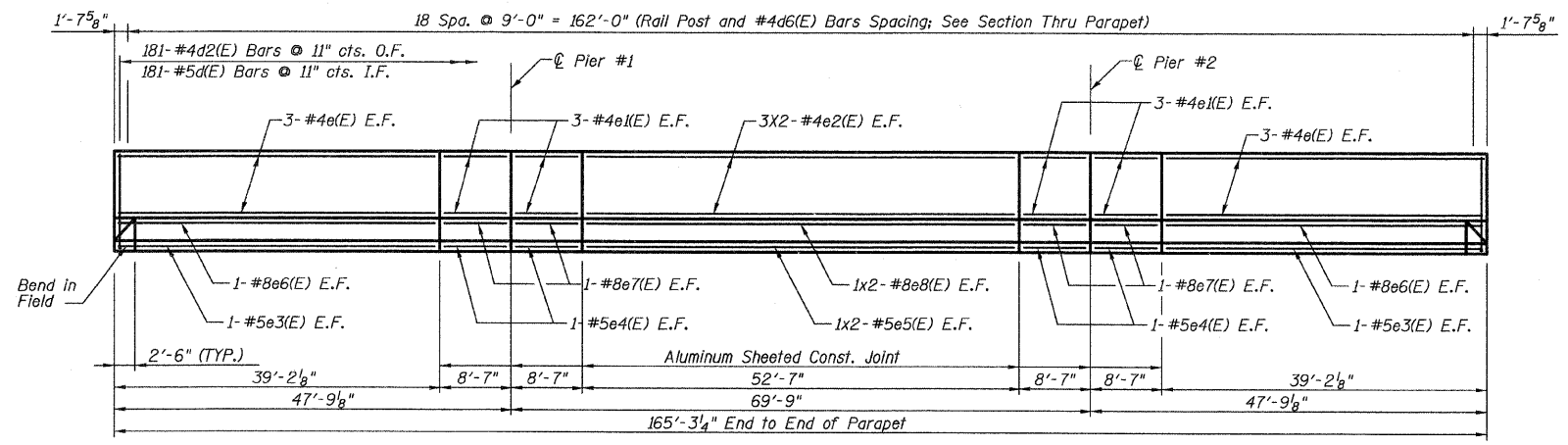
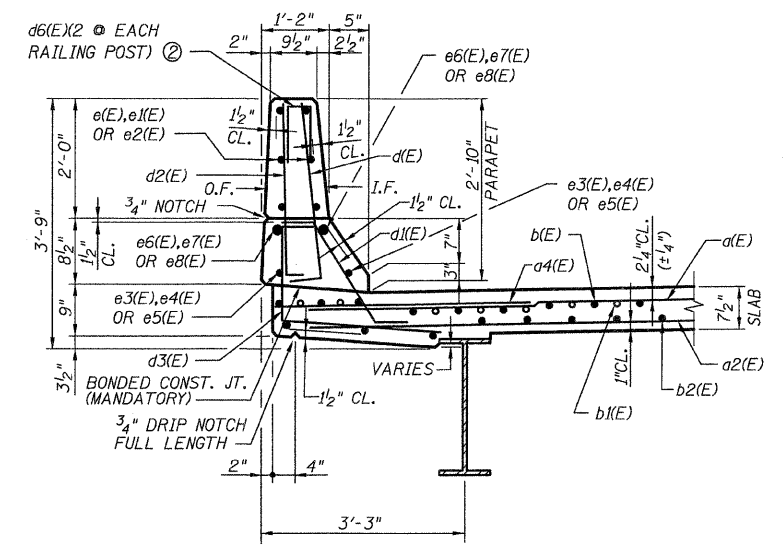


STATE OF ILLINOIS  
DEPARTMENT OF TRANSPORTATION

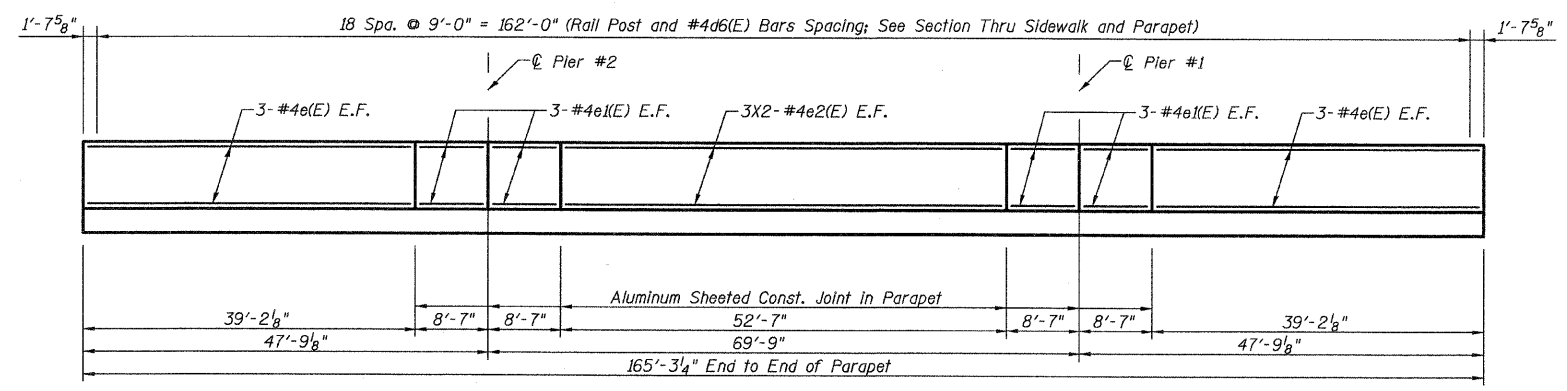
F.A.P. RTE.	SEC.	COUNTY	TOTAL SHEETS	SHEET NO.
592	121-1R, 121HWB	ST. CLAIR	239	143
F.H.W.A. REGION 7		ILLINOIS FED. AID PROJECT		



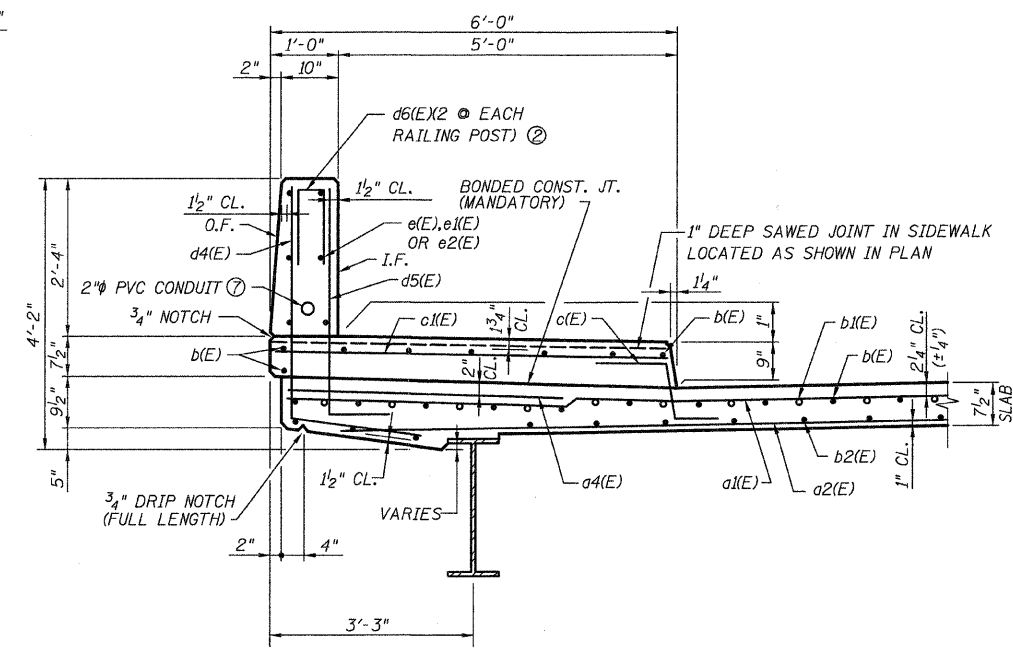
**INSIDE ELEVATION OF NORTH PARAPET**



**SECTION THRU PARAPET**

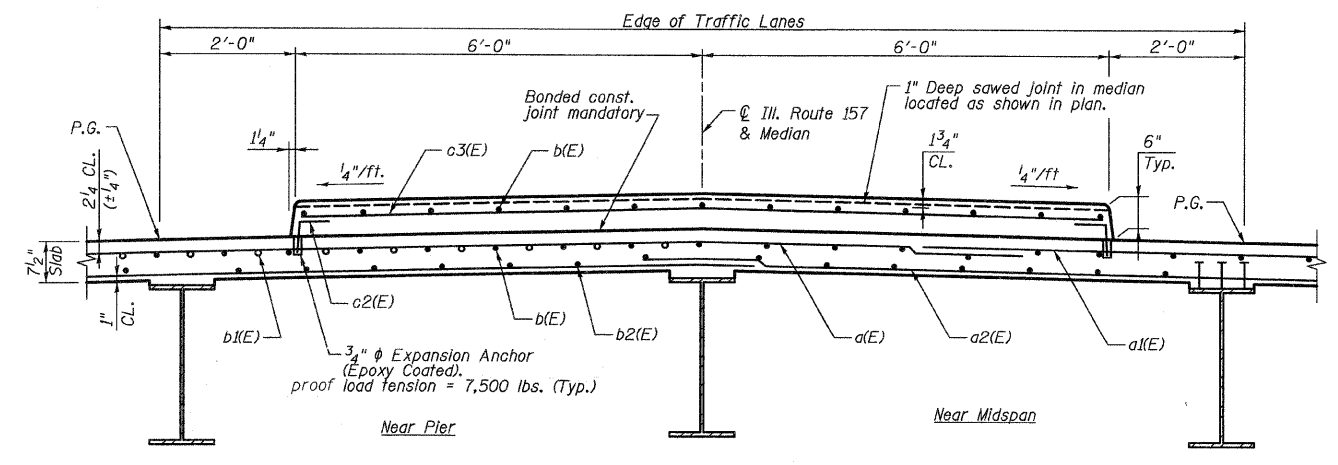


**INSIDE ELEVATION OF SOUTH PARAPET**

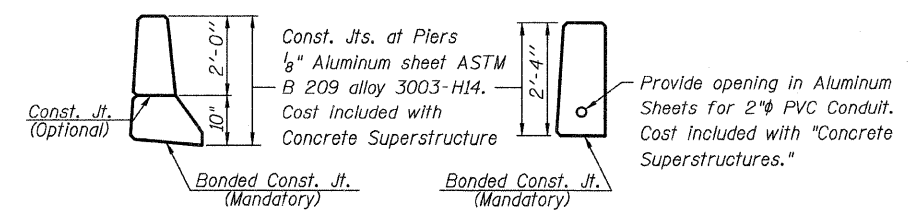


**SECTION THRU SIDEWALK AND PARAPET**

- NOTES:
- For superstructure details and bill of materials, see sheet 8 of 20.
  - For bridge fence railing details, see sheet 9 of 20.
  - Reinforcement bars designated (E) shall be epoxy coated.
  - Minimum bar lap lengths in parapet:
    - #4 - 2'-5"
    - #5 - 2'-2"
    - #8 - 4'-6"
  - E.F. denotes each face. I.F. denotes inside face. O.F. denotes outside face.
  - Bars indicated thus 4x3-#4 etc. indicates 4 lines of bars with 3 lengths per line.
  - Cost of conduit is included with "Concrete Superstructures."



**SECTION THRU MEDIAN**  
(Looking East)



**PARAPET JOINT DETAILS**

**SUPERSTRUCTURE DETAILS**  
F.A.P. 592 (IL Rte. 157) OVER  
UNION PACIFIC RAILROAD  
SECTION 121-1R, 121HWB  
ST. CLAIR COUNTY  
STATION 5029+64.85  
STRUCTURE NO. 082-0303

PLOT DATE = 09/21/2007  
 FILE NAME = H:\A\21615\Structure\082-0303\medt1a.dgn  
 PLOT SCALE = 1:10000 IN / IN  
 USER NAME = #USER#