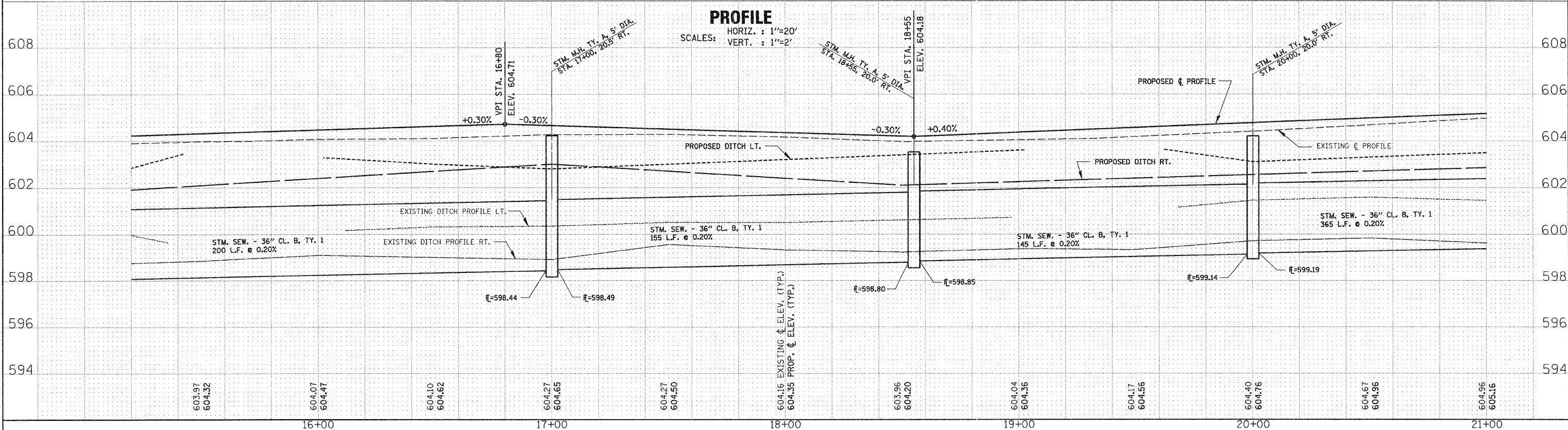
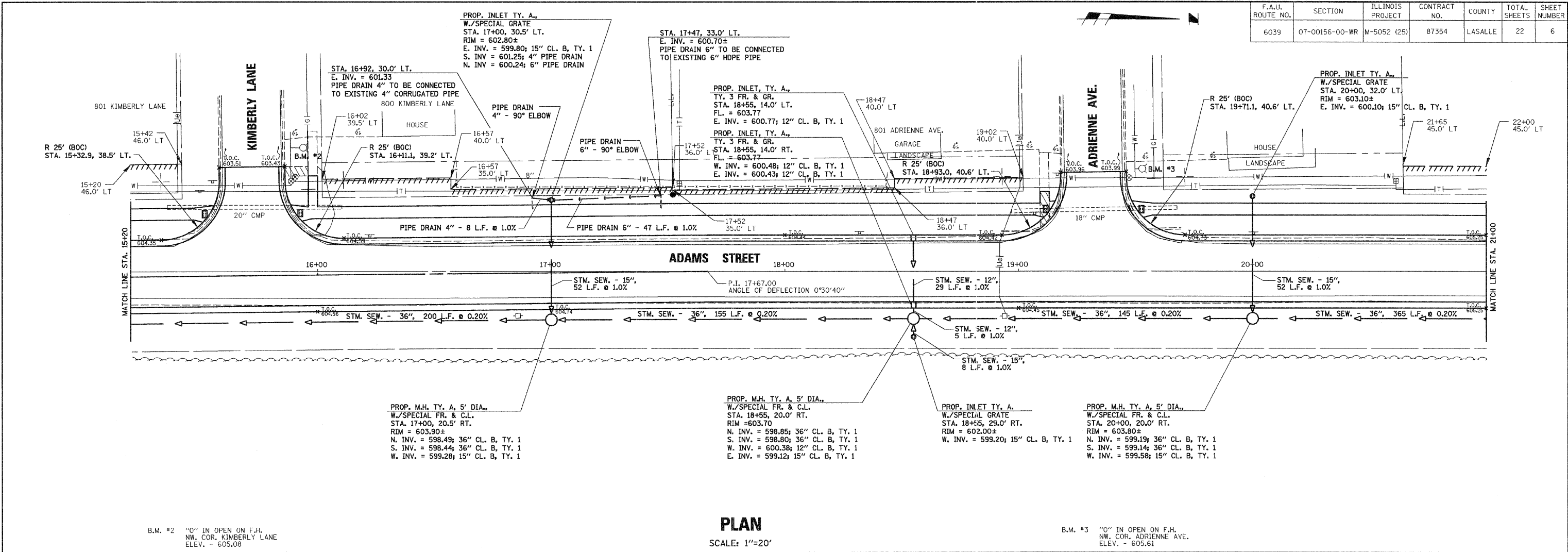


**ADAMS ST. WIDENING AND RESURFACING**

F.A.J. ROUTE NO.	SECTION	ILLINOIS PROJECT	CONTRACT NO.	COUNTY	TOTAL SHEETS	SHEET NUMBER
6039	07-00156-00-WR	M-5052 (25)	87354	LASALLE	22	6

DATE	
BY	
SURVEYED	
PLOTTED	
GRADES CHECKED	
B.M. # NOTED	
STRUCTURE NOTATIONS CHECKED	
NOTE BOOK	
NO.	

DATE	
BY	
SURVEYED	
PLOTTED	
GRADES CHECKED	
B.M. # NOTED	
STRUCTURE NOTATIONS CHECKED	
NOTE BOOK	
NO.	



B.M. #2 "O" IN OPEN ON F.H. NW. COR. KIMBERLY LANE ELEV. - 605.08

B.M. #3 "O" IN OPEN ON F.H. NW. COR. ADRIENNE AVE. ELEV. - 605.61