

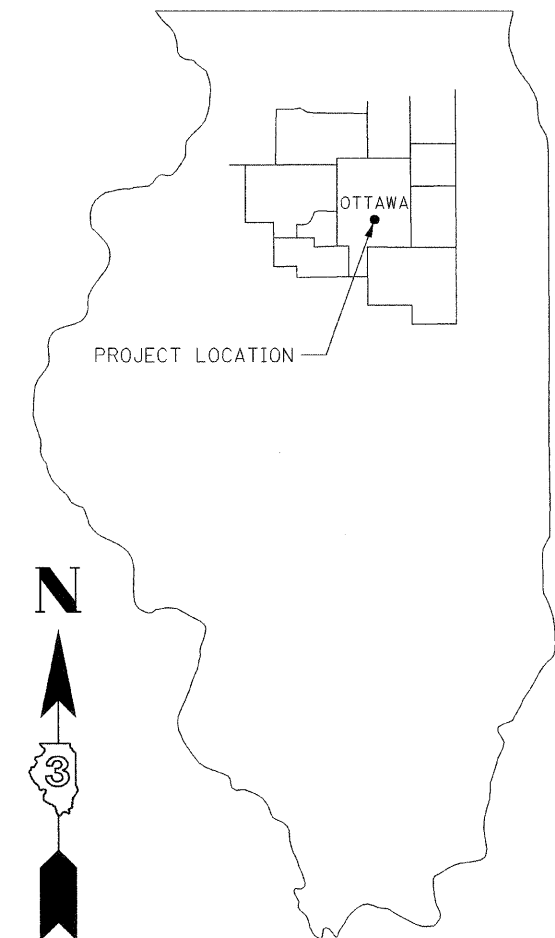
F.A.U. ROUTE NO.	SECTION	ILLINOIS PROJECT	CONTRACT NO.	COUNTY	TOTAL SHEETS	SHEET NUMBER
6039	07-00156-00-WR	M-5052 (25)	87354	LASALLE	22	1

STATE OF ILLINOIS  
DEPARTMENT OF TRANSPORTATION

**PLANS FOR  
PROPOSED LOCAL AGENCY IMPROVEMENT  
SURFACE TRANSPORTATION PROGRAM – URBAN**

CITY OF OTTAWA - ADAMS STREET  
LASALLE COUNTY

ADAMS ST. - F.A.U. ROUTE 6039 SECTION 07-00156-00-WR  
PROJECT M-5052 (25)  
JOB NO. C-93-065-07



LOCATION MAP: NOT TO SCALE  
TYPICAL SECTIONS: NOT TO SCALE  
PLAN & PROFILE: HORIZ.: 1" = 20'  
VERT.: 1" = 2'  
CROSS SECTIONS: HORIZ.: 1" = 5'  
VERT.: 1" = 2'

INDEX OF SHEETS

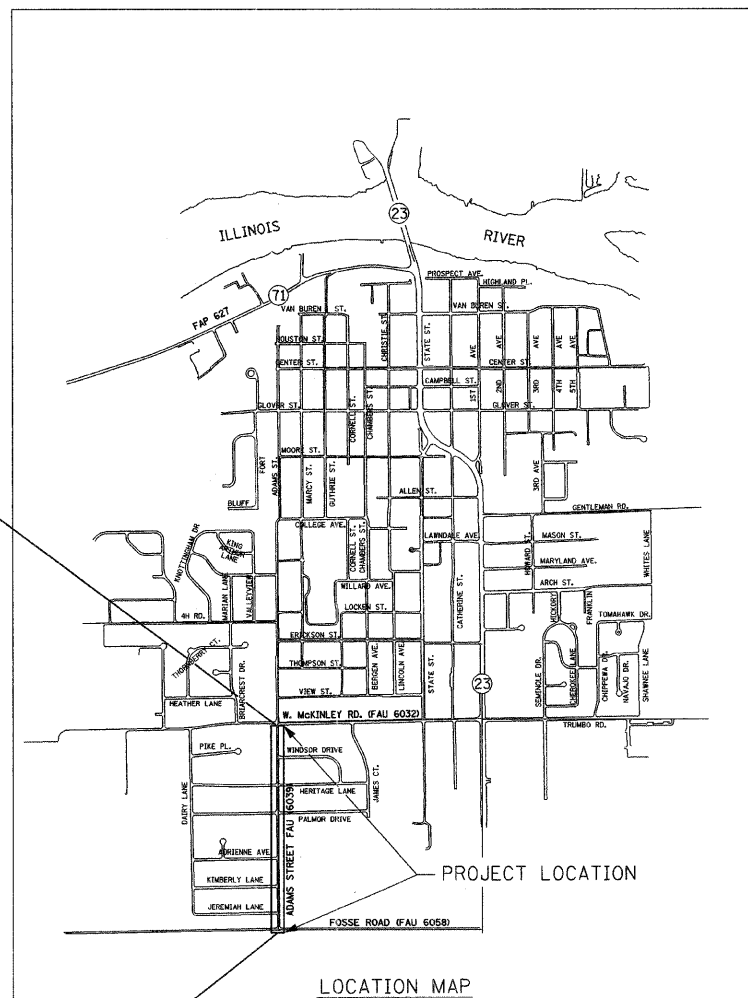
- 1 COVER SHEET
- 2 GENERAL NOTES, LEGEND & SUMMARY OF QUANTITIES
- 3 TYPICAL SECTIONS & PAVEMENT DESIGN
- 4 SCHEDULE OF QUANTITIES
- 5-9 PLAN SHEETS
- 10 STORM WATER POLLUTION PREVENTION PLAN
- 11 STORM WATER POLLUTION PREVENTION SITE PLAN & PAVEMENT MARKING DETAIL
- 12-22 CROSS SECTION SHEETS

STANDARDS

- 280001-04 TEMPORARY EROSION CONTROL SYSTEMS
- 424001-05 CURB RAMPS FOR SIDEWALKS
- 542401 METAL END SECTION FOR PIPE CULVERTS
- 602301-01 INLET, TYPE A
- 602401-01 MANHOLE, TYPE A
- 602411 MANHOLE, TYPE A (7') DIAMETER
- 602601-01 PRECAST REINFORCED CONCRETE FLAT SLAB TOP
- 604001-02 FRAME AND LIDS, TYPE 1
- 604006-03 FRAME AND GRATE, TYPE 3
- 606001-03 CONCRETE CURB TYPE B, AND COMBINATION CONCRETE CURB AND GUTTER
- 701501-04 URBAN LANE CLOSURE 2L, 2W, UNDIVIDED
- 701901 TRAFFIC CONTROL DEVICES

ADAMS STREET

DESIGN FUNCTIONAL CLASSIFICATION - URBAN COLLECTOR  
STRUCTURAL DESIGN TRAFFIC - 3000 (2017)  
DESIGN SPEED - 30 MPH  
PLANS DEVELOPED IN ACCORDANCE WITH 3R GUIDELINES OF THE BLRS MANUAL



LOCATION MAP

IMPROVEMENT BEGINS STA. 10+08

GROSS & NET PROJECT LENGTH  
2,648 L.F. (0.50 MILE)

J.U.I.E. SYSTEM - THE TOLL FREE TELEPHONE NUMBER FOR JOINT UTILITY INFORMATION FOR EXCAVATORS IS 1-800-892-0123

PLANS PREPARED BY <b>Renwick &amp; Associates, Inc., - Consulting Engineers</b> 228 WEST MAIN STREET, OTTAWA, ILLINOIS		APPROVED _____ 2008 MAYOR, CITY OF OTTAWA
	ISSUE DATE 1/4/08 REVISION 2/8/08 FILE NUMBER 06.2.1	APPROVED <u>02-15</u> 2008 <i>Harold R. Lay</i> DISTRICT ENGINEER OF LOCAL ROADS & STREETS
	DATE 2/8/08	APPROVED <u>02-15</u> 2008 <i>George F. Lynn</i> DISTRICT ENGINEER
	APPROVED D.C.B.	STATE OF ILLINOIS DEPARTMENT OF TRANSPORTATION
	CHECKED B.J.K.	
	DRAWN R.T.F. SURVEYED R.C.T.	

F.A.U. ROUTE NO.	SECTION	ILLINOIS PROJECT	CONTRACT NO.	COUNTY	TOTAL SHEETS	SHEET NUMBER
6039	07-00156-00-WR	M-5052 (25)	87354	LASALLE	22	2

## GENERAL NOTES

- THE THICKNESS OF HOT-MIX ASPHALT ON THE PLANS IS THE NOMINAL THICKNESS. DEVIATIONS FROM THE NOMINAL THICKNESS WILL BE PERMITTED WHEN SUCH DEVIATIONS OCCUR DUE TO IRREGULARITIES IN THE EXISTING SURFACE ON WHICH THE HOT-MIX ASPHALT IS PLACED.
- THE FOLLOWING RATES OF APPLICATION HAVE BEEN ASSUMED IN CALCULATING PLAN QUANTITIES:
 

BIT. MATERIALS (PRIME COAT) RC-70	0.08	GAL/SQ YD
BIT. MATERIALS (PRIME COAT) MC-30	0.35	GAL/SQ YD
AGGREGATE (PRIME COAT)	0.001	TONS/SO YD
HOT-MIX ASPHALT SURFACE COURSE AND LEVELING BINDER	112	LBS/SO YD/INCH
- ALL SAW CUTTING OF EXISTING PAVEMENTS SHALL BE CONSIDERED INCIDENTAL TO THE CONTRACT. THE MINIMUM SAW CUT DEPTH IN THE PAVEMENT SHALL BE 1.25 INCHES UNLESS OTHERWISE SPECIFIED.
- THE CONTRACTOR WILL PROVIDE FOR TEMPORARY DRAINAGE UNTIL THE FINAL SURFACE IS PLACED.
- EXISTING CASTINGS, FRAMES AND GRATES REMOVED ARE THE PROPERTY OF THE CITY AND SHALL BE TRANSPORTED TO CITY FACILITIES AS DIRECTED BY THE CITY SUPERINTENDENT IN CHARGE OR THE ENGINEER.
- THE CONTRACTOR WILL PROTECT ALL TREES AND BUSHES FROM DAMAGE DUE TO HIS OPERATIONS UNLESS SCHEDULED FOR REMOVAL ON PLANS
- THE LOCATION OF EXISTING UNDERGROUND UTILITIES ARE SHOWN BASED IN LARGE PART FROM INFORMATION FURNISHED BY UTILITY COMPANIES AND OTHERS. THE ACTUAL LOCATION OR EXISTENCE MAY BE CONSIDERABLY DIFFERENT. THE ENGINEER DOES NOT WARRANT THE LOCATION OR ANY SPECIFIC INFORMATION CONCERNING UNDERGROUND UTILITIES. IT SHALL BE THE CONTRACTOR'S RESPONSIBILITY TO VERIFY THE CORRECTNESS OF THE SAME PRIOR TO THE START OF CONSTRUCTION BY UNCOVERING UNDERGROUND UTILITIES IN ALL LOCATIONS WHERE HE FEELS THE PROPOSED CONSTRUCTION MAY NEED TO BE ALTERED TO PREVENT CONFLICTS IN LINE, GRADE OR WORKING CLEARANCES. THE CONTRACTOR IS EXPECTED TO WORK ADJACENT TO, BENEATH, ABOVE AND IN CLOSE PROXIMITY TO ALL EXISTING UTILITIES. ANY NECESSARY CHANGES DURING CONSTRUCTION WILL BE DEALT WITH ON A CASE BY CASE BASIS. IT IS ANTICIPATED SOME UNDERGROUND UTILITIES WILL REQUIRE TEMPORARY SUPPORT AND THE USUAL SAFEGUARDS. ALSO, IT MAY BE NECESSARY TO RELOCATE SOME OF THE EXISTING UTILITIES. THE NECESSITY TO RELOCATE UTILITIES DOES NOT RELIEVE THE CONTRACTOR FROM USING SAFETY PRECAUTIONS DURING THE CONSTRUCTION OF THE WORK.
 

SHOULD IT BE NECESSARY TO RELOCATE ANY EXISTING UNDERGROUND UTILITY TO PREVENT LINE OR GRADE CONFLICTS WITH THE NEW CONSTRUCTION, THE CONTRACTOR SHALL IMMEDIATELY ADVISE THE ENGINEER.
- THE CONTRACTOR SHALL BE RESPONSIBLE FOR PROTECTING UTILITY PROPERTY FROM CONSTRUCTION OPERATIONS AS OUTLINED IN ARTICLE 107.31 OF THE STANDARD SPECIFICATIONS. THE J.U.L.I.E. NUMBER IS 1-800-892-0123. A MINIMUM OF FORTY-EIGHT HOURS ADVANCE NOTICE IS REQUIRED. MEMBERS OF J.U.L.I.E. KNOWN TO BE WITHIN THE LIMITS OF THE IMPROVEMENT ARE:

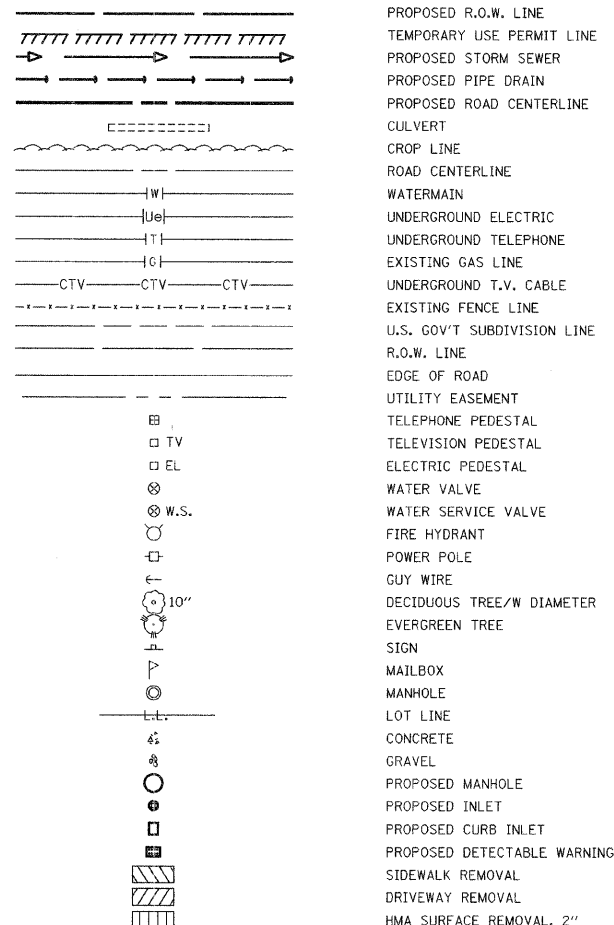
	RELOCATION STATUS
AMEREN IP	PENDING
VERIZON	PENDING
MEDIACOM (CABLE T.V.)	PENDING
CITY OF OTTAWA (SANITARY & STORM SEWER MAINS)	CLEAR
CITY OF OTTAWA (WATER MAINS)	CONTRACTOR TO UNCOVER WATER MAIN AT 3 LOCATIONS PRIOR TO INSTALLATION OF STORM SEWER
NICOR GAS	PENDING

- ABANDONED UNDERGROUND UTILITIES THAT CONFLICT WITH CONSTRUCTION SHALL BE DISPOSED OF OUTSIDE THE LIMITS OF THE RIGHT OF WAY ACCORDING TO ARTICLE 202.03 OF THE STANDARD SPECIFICATIONS.
- THE CONTRACTOR WILL BE FULLY RESPONSIBLE FOR THE RESTORATION OF ANY AND ALL CURB AND GUTTER, DRIVEWAYS, SIDEWALKS, PARKING LOTS AND STREETS DAMAGED OR DESTROYED DURING THE CONSTRUCTION OF THIS PROJECT. ALL CURB AND GUTTER, DRIVEWAYS, SIDEWALKS, PARKING LOTS AND STREETS DAMAGED BY THIS CONTRACTOR'S WORK WILL BE REPAIRED OR REPLACED.

PLAN	SURVEYED	DATE
	PLOTTED	BY
NOTE BOOK NO.	GRADES CHECKED	
	B.M.'S NOTED	
	STRUCTURE	NOTATIONS CH'VD

PROFILE	SURVEYED	DATE
	PLOTTED	BY
NOTE BOOK NO.	GRADES CHECKED	
	B.M.'S NOTED	
	STRUCTURE	NOTATIONS CH'VD

### LEGEND



CODE NUMBER	PAY ITEM	UNIT	QTY.
20100110	TREE REMOVAL (6 TO 15 UNITS DIAMETER)	UNIT	34
20100210	TREE REMOVAL (OVER 15 UNITS DIAMETER)	UNIT	86
* 20200100	EARTH EXCAVATION	CU YD	1,492
20800150	TRENCH BACKFILL	CU YD	539
* 21101505	TOPSOIL EXCAVATION AND PLACEMENT	CU YD	916
25000110	SEEDING, CLASS 1A	ACRE	1.60
25000400	NITROGEN FERTILIZER NUTRIENT	POUND	144
25000500	PHOSPHOROUS FERTILIZER NUTRIENT	POUND	144
25000600	POTASSIUM FERTILIZER NUTRIENT	POUND	144
25100630	EROSION CONTROL BLANKET	SO YD	7,774
28000300	TEMPORARY DITCH CHECKS	EACH	23
28000500	INLET AND PIPE PROTECTION	EACH	20
35100100	AGGREGATE BASE COARSE, TYPE A	TON	8,314
35600900	HOT-MIX ASPHALT BASE COARSE WIDENING	TON	403
40600100	BITUMINOUS MATERIALS (PRIME COAT)	GALLON	699
40600300	AGGREGATE (PRIME COAT)	TON	9
40600625	LEVELING BINDER (MACHINE METHOD), N50	TON	1,512
40600982	HOT-MIX ASPHALT SURFACE REMOVAL - BUTT JOINT	SO YD	622
40603310	HOT-MIX ASPHALT SURFACE COARSE, MIX "C", N50	TON	536
40800050	INCIDENTAL HOT-MIX ASPHALT SURFACING	TON	82
* 42300200	PORTLAND CEMENT CONCRETE DRIVEWAY PAVEMENT, 6 INCH	SO YD	473
* 42400100	PORTLAND CEMENT CONCRETE SIDEWALK 4 INCH	SO FT	18,801
* 42400800	DETECTABLE WARNINGS	SO FT	150
44000157	HOT-MIX ASPHALT SURFACE REMOVAL, 2"	SO YD	49
44000198	HOT-MIX ASPHALT SURFACE REMOVAL, VARIABLE DEPTH	SO YD	577
44000200	DRIVEWAY PAVEMENT REMOVAL	SO YD	196
44000500	COMBINATION CURB AND GUTTER REMOVAL	FOOT	463
44000600	SIDEWALK REMOVAL	SO FT	232
44201737	CLASS D PATCHES, TYPE I, 8"	SO YD	9
44201741	CLASS D PATCHES, TYPE II, 8"	SO YD	130
44201745	CLASS D PATCHES, TYPE III, 8"	SO YD	17
* 50105220	PIPE CULVERT REMOVAL	FOOT	365
* 54200241	PIPE CULVERTS, CLASS C, TYPE 1 36"	FOOT	20
* 54215571	METAL END SECTIONS 36"	EACH	1
* 550B0050	STORM SEWERS CLASS B, TYPE 1 12"	FOOT	263
* 550B0070	STORM SEWERS CLASS B, TYPE 1 15"	FOOT	796
550B0090	STORM SEWERS CLASS B, TYPE 1 18"	FOOT	301
550B0110	STORM SEWERS CLASS B, TYPE 1 21"	FOOT	229
550B0130	STORM SEWERS CLASS B, TYPE 1 27"	FOOT	131
550B0150	STORM SEWERS CLASS B, TYPE 1 33"	FOOT	185
550B0160	STORM SEWERS CLASS B, TYPE 1 36"	FOOT	1,338
550B0180	STORM SEWERS CLASS B, TYPE 1 42"	FOOT	59
* 60100905	PIPE DRAINS 4"	FOOT	233
* 60100915	PIPE DRAINS 6"	FOOT	47
* 60220240	MANHOLES, TYPE A, 4' DIAMETER, WITH SPECIAL FRAME, CLOSED LID	EACH	10
* 60222940	MANHOLES, TYPE A, 5' DIAMETER, WITH SPECIAL FRAME, CLOSED LID	EACH	9
60224446	MANHOLES, TYPE A, 7' DIAMETER, TYPE 1 FRAME, CLOSED LID	EACH	1
60235700	INLETS, TYPE A, TYPE 3 FRAME & GRATE	EACH	18
* 60238710	INLETS, TYPE A, WITH SPECIAL GRATE	EACH	19
* 60255500	MANHOLES TO BE ADJUSTED	EACH	5
60266600	VALVE BOXES TO BE ADJUSTED	EACH	1
60605000	COMBINATION CONCRETE CURB AND GUTTER, TYPE B-6.24	FOOT	5,401
67100100	MOBILIZATION	L SUM	1
* 70101700	TRAFFIC CONTROL AND PROTECTION	L SUM	1
70102620	TRAFFIC CONTROL AND PROTECTION, STANDARD 701501	L SUM	1
Δ 78000400	THERMOPLASTIC PAVEMENT MARKING - LINE 6"	FOOT	1,300
Δ 78000600	THERMOPLASTIC PAVEMENT MARKING - LINE 12"	FOOT	396
Δ 78000650	THERMOPLASTIC PAVEMENT MARKING - LINE 24"	FOOT	110
* XX000856	MAILBOX REMOVAL AND RELOCATION	EACH	8
* XX004656	EMBANKMENT	CU YD	1,049
* XX197300	SLOTTED DRAIN	FOOT	40
* Z0041500	PLUG EXISTING CULVERTS	EACH	30
* Z0051500	REMOVING AND RESETTING STREET SIGNS	EACH	24

\* SEE SPECIAL PROVISIONS

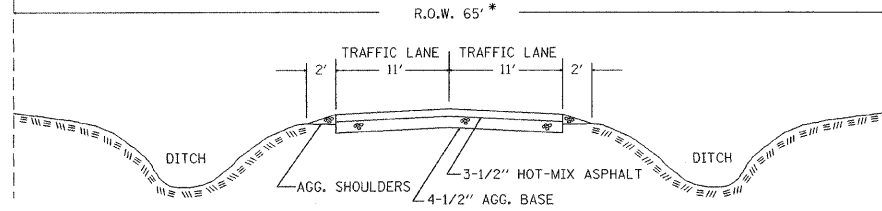
Δ SPECIALTY ITEMS

F.A.U. ROUTE NO.	SECTION	ILLINOIS PROJECT	CONTRACT NO.	COUNTY	TOTAL SHEETS	SHEET NUMBER
6039	07-00156-00-WR	M-5052 (25)	87354	LASALLE	22	3

**ADAMS STREET**

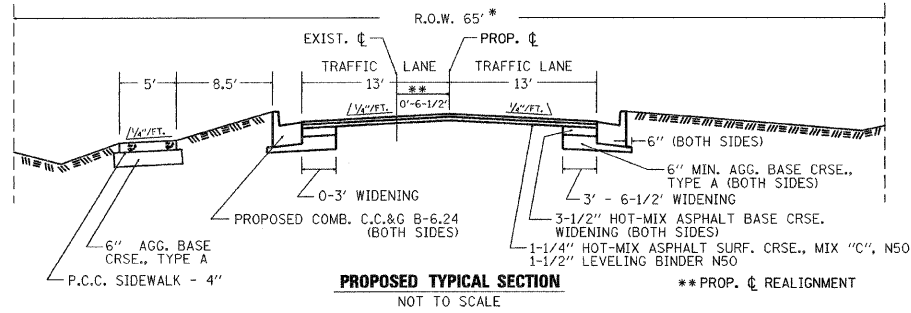
STATION 10+08 TO STATION 17+67

R.O.W. 65'



**EXISTING TYPICAL SECTION**  
NOT TO SCALE

\* WIDTH VARIES FROM 65' TO 66' FROM STA. 16+55 TO 17+67

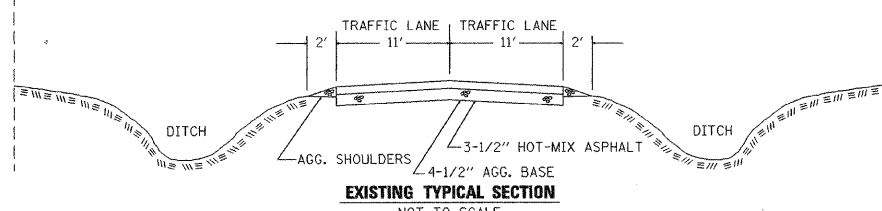


**PROPOSED TYPICAL SECTION**  
NOT TO SCALE

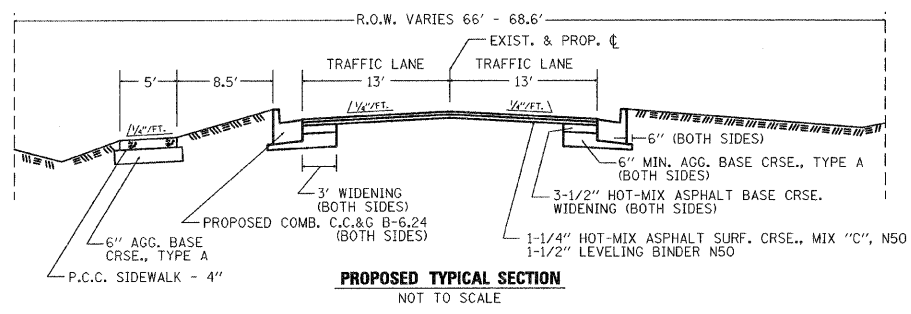
\*\*PROP. REALIGNMENT

STATION 17+67 TO STATION 23+28

R.O.W. VARIES 66' - 68.6'



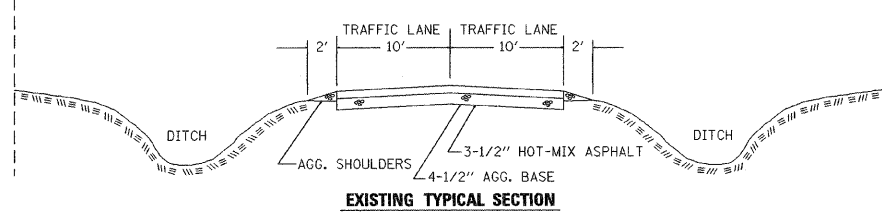
**EXISTING TYPICAL SECTION**  
NOT TO SCALE



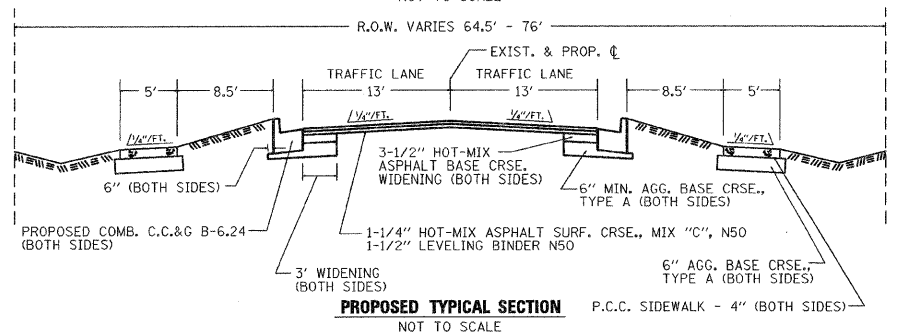
**PROPOSED TYPICAL SECTION**  
NOT TO SCALE

STATION 23+28 TO STATION 36+57

R.O.W. VARIES 60' - 76'



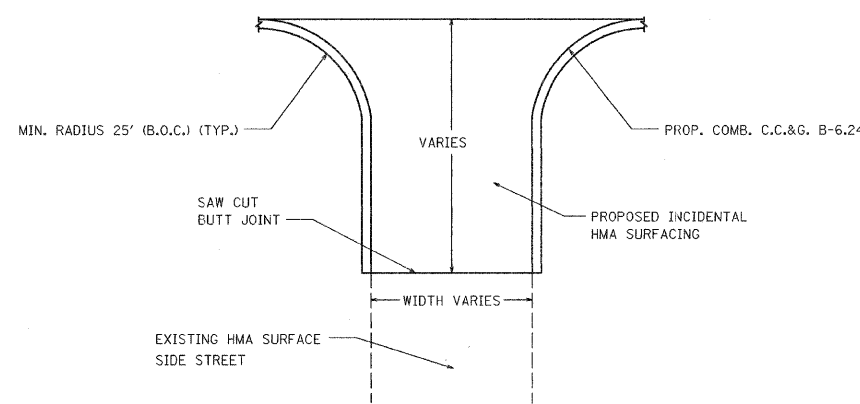
**EXISTING TYPICAL SECTION**  
NOT TO SCALE



**PROPOSED TYPICAL SECTION**  
NOT TO SCALE

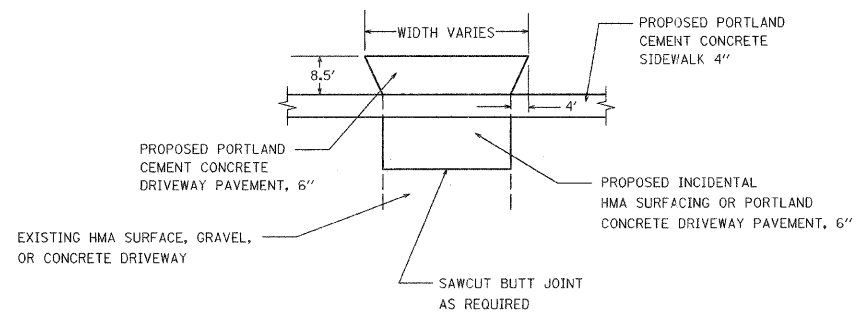
**TYPICAL SIDE STREET DETAIL**

NOT TO SCALE



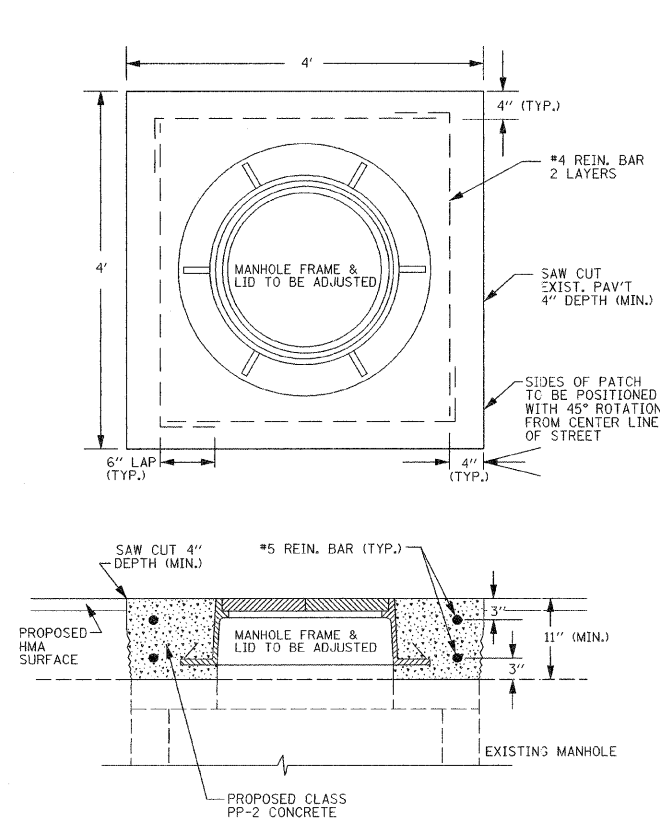
**TYPICAL DRIVEWAY DETAIL**

NOT TO SCALE



**DETAIL FOR MANHOLE ADJUSTMENT**

NOT TO SCALE



**PAVEMENT DESIGN**

	HMA CLASS D PATCHES BASE COURSE WIDENING	HMA LEVEL BINDER	HMA SURFACE
PG Grade	PG64-22	PG64-22	PG64-22
MAX % RAP Allowable **	25%	25%	15%
Design Air Voids	4.0% @ N50	4.0% @ N50	4.0% @ N50
Mixture Composition	IL 19.0	IL 9.5	IL 12.5 or IL 9.5
Friction Aggregate			Mixture C
Density Test Method	Nuclear/ Cores	Satisfaction of Engineer	Nuclear/ Cores

\* Material shall be compacted to 93.0-97.4 percent of the maximum theoretical density, except that when placed as first lift on an unimproved subgrade the minimum percent compaction shall be 92.0 percent. The maximum theoretical density shall be determined from the moving average as specified in the OC/QA Specification.

\*\* If the RAP percentage is different than listed above, the PG grade may need to be adjusted. This will be determined by the Engineer.

CLASS II ROAD  
2002 ADT 1,750  
DESIGN SPEED 30 MPH  
STRUCTURAL DESIGN DATA (FOR ALL SECTIONS)  
DESIGN PERIOD - 20 YEARS  
S.D.T. (2017) - 3,000  
P.V. = 2,940 S.U. = 45 M.U. = 15  
PERCENT OF S.D.T. P.V. = 98.0% S.U. = 1.5% M.U. = 0.5%  
I.B.R. = 3.6

**STRUCTURAL COMPONENTS**

FLEXIBLE PAVEMENT - TRAFFIC FACTOR = 0.09  
STRUCTURAL NUMBER - (D1) = 2.75

**PAVEMENT STRUCTURE MATERIALS**

**EXISTING**

AGGREGATE BASE - 4-1/2"  
HOT-MIX ASPHALT - 3-1/2"

**PROPOSED MAINLINE**

LEVELING BINDER N50 - 1-1/2"  
HOT-MIX ASPHALT SURF. CRSE. MIX "C", N50 - 1-1/4"

**PROPOSED WIDENING**

AGGREGATE BASE CRSE., TYPE A - 6"  
HOT-MIX ASPHALT BASE CRSE. WIDENING - 3-1/2"  
LEVELING BINDER N50 - 1-1/2"  
HOT-MIX ASPHALT SURF. CRSE. MIX "C", N50 - 1-1/4"

PLAN

DATE	BY	SURVEYED	GRADES CHECKED	STRUCTURE NOTATIONS CHECKED

PROFILE

DATE	BY	SURVEYED	GRADES CHECKED	STRUCTURE NOTATIONS CHECKED

SCHEDULE OF QUANTITIES

F.A.U. ROUTE NO.	SECTION	ILLINOIS PROJECT	CONTRACT NO.	COUNTY	TOTAL SHEETS	SHEET NUMBER
6039	07-00156-00-WR	M-5052 (25)	87354	LASALLE	22	4

STATION	METAL END SECTIONS 36"	PIPE CULVERTS CL. C TY. 1, 36"	STORM SEWERS CL. B TY. 1, 12"	STORM SEWERS CL. B TY. 1, 15"	STORM SEWERS CL. B TY. 1, 18"	STORM SEWERS CL. B TY. 1, 21"	STORM SEWERS CL. B TY. 1, 27"	STORM SEWERS CL. B TY. 1, 33"	STORM SEWERS CL. B TY. 1, 36"	STORM SEWERS CL. B TY. 1, 42"	PIPE DRAINS 4"	PIPE DRAINS 6"	MANHOLE TY. A 4' DIA., W/SPECIAL FRAME & CLOSED LID	MANHOLE TY. A 5' DIA., W/SPECIAL FRAME & CLOSED LID	MANHOLE TY. A 7' DIA., TYPE 1 FRAME & CLOSED LID	INLETS TYPE A, SPECIAL GRATE	INLETS TYPE A, TYPE 3 FRAME & GRATE	TRENCH BACKFILL CU YD	CLASS D, PATCHES TYPE 1, 8 INCH CU YD	CLASS D, PATCHES TYPE 1, 8 INCH CU YD	CLASS D, PATCHES TYPE 1, 8 INCH CU YD	INLET & PIPE PROTECTION EACH	STATION
10+28 RT.	1	20								98				1 *	1			53.8			17.0	1	10+28 RT.
11+25 RT.				5													1						11+25 RT.
11+25 LT.				29													1	12.2	4.0				11+25 LT.
11+50 LT.				30												1	9.8					1	11+50 LT.
12+50 RT.				6					125					1 *	1							1	12+50 RT.
13+50 LT.				17													1	17.6	4.7			1	13+50 LT.
13+50 RT.				35										1 *	1							1	13+50 RT.
15+00 RT.			6						150					1 *	1		0.6						15+00 RT.
15+02 LT.											156												15+02 LT.
16+92 LT.											8												16+92 LT.
17+00 LT.				52												1		15.9	6.2		6.2	1	17+00 LT.
17+00 RT.									200					1 *	1								17+00 RT.
17+47 LT.												47											17+47 LT.
18+55 LT.			29														1	9.1		6.2			18+55 LT.
18+55 RT.			5						155					1 *	1								18+55 RT.
18+55 LT.				8												1						1	18+55 LT.
20+00 LT.				52												1		16.1		6.2		1	20+00 LT.
20+00 RT.									145					1 *	1								20+00 RT.
23+08 RT.																		15.6					23+08 RT.
23+65 LT.																1	9.1		6.2				23+65 LT.
23+65 RT.			6						365					1 *	1								23+65 RT.
23+65 LT.				15												1	2.2					1	23+65 LT.
24+05 RT.				40							17					1						1	24+05 RT.
24+22 RT.																		20.0					24+22 RT.
24+22 LT.																	5.9						24+22 LT.
24+50 RT.				45												1						1	24+50 RT.
24+81 RT.																		0.8					24+81 RT.
24+99 LT.				61													1						24+99 LT.
25+00 RT.				27					135					1 *	1		18.3		13.4				25+00 RT.
25+15 RT.																	44.4		14.7				25+15 RT.
25+25 LT.				26												1	6.3		5.3				25+25 LT.
25+26 RT.				26												1	5.6		7.2				25+26 RT.
25+44 RT.																							25+44 RT.
25+50 RT.			15						50					1 *	1		0.5					1	25+50 RT.
26+04 RT.																	2.8						26+04 RT.
26+30 RT.				16					80					1 *	1		28.9					1	26+30 RT.
26+30 LT.				52							20						20.2		6.2			1	26+30 LT.
26+70 RT.																	54.2						26+70 RT.
26+81 RT.																	0.7						26+81 RT.
27+75 RT.																	25.0						27+75 RT.
27+75 LT.																	11.1						27+75 LT.
28+00 RT.				15					119					1 *	1		3.1					1	28+00 RT.
28+58 LT.				56							32					1	14.3		13.1				28+58 LT.
28+60 RT.				19					60					1 *	1								28+60 RT.
28+71 RT.																	18.7		11.9				28+71 RT.
28+71 LT.																	7.2						28+71 LT.
28+85 LT.				27													8.9		5.6				28+85 LT.
28+87 RT.				26													6.5		5.6				28+87 RT.
29+00 LT.				15												1							29+00 LT.
29+10 RT.									50					1 *	1								29+10 RT.
29+15 RT.				14													2.7						29+15 RT.
29+61 RT.																	11.8						29+61 RT.
29+61 LT.																	5.9						29+61 LT.
30+00 RT.				13					90					1 *	1		3.1						30+00 RT.
30+58 RT.																	6.9						30+58 RT.
30+76 RT.				12					76					1 *	1		2.2						30+76 RT.
32+11 RT.				17					135					1 *	1		3.8						32+11 RT.
32+25 RT.																	16.0		10.6				32+25 RT.
32+25 LT.																	8.6						32+25 LT.
32+38 RT.				26												1	6.3		5.3				32+38 RT.
32+50 RT.				14																			32+50 RT.
33+33 LT.				51												1							33+33 LT.
33+33 RT.				122													6.4		6.2				33+33 RT.
TOTAL	1	20	263	796	301	229	131	185	1,338	59	233	47	10	9	1	19	18	539.1	8.7	129.9	17.0	20	

\* NOTE: ALL MANHOLES TO BE CONSTRUCTED WITH THE LID/GRATE AND ACCESS STEPS ON THE EAST SIDE OF THE MANHOLE

PLAN	SURVEYED	PLOTTED	GRADES CHECKED	B.M.'S NOTED	STRUCTURE NOTATIONS CHKD	BY	DATE

PROFILE	SURVEYED	PLOTTED	GRADES CHECKED	B.M.'S NOTED	STRUCTURE NOTATIONS CHKD	BY	DATE

STA. TO STA.	LT./RT.	INCIDENTAL HMA SURFACING TON	HMA BASE CRSE. WIDENING TON	HMA SURF. CRSE., MIX "C" N50 TON	LEVELING BINDER (MACHINE METHOD) N50 TON	SURFACE REMOVAL BUTT JOINT TON	HMA SURFACE REMOVAL VARIABLE DEPTH TON	EARTH EXCAVATION CU YD	EMBANKMENT CU YD
10+08 TO 36+57	MAINLINE		403	536	1,420.2		577.2	1,492	1,049
10+08	MAINLINE	5.6			6.8	148.8			
12+12	LT	8.3			9.9	41.7			
15+72	LT	8.6			10.2	44.4			
19+32	LT	7.9			9.3	50.1			
22+99	LT	1.4							
25+13	LT	8.7			10.4	23.0			
25+13	RT	9.5			11.3	23.0			
28+73	LT	7.7			9.1	18.3			
28+73	RT	8.0			9.5	27.8			
30+58	RT	0.6							
32+11	LT	1.6							
32+25	RT	7.6			9.0	59.0			
33+84	RT	0.6							
33+97	LT	1.3							
36+57	MAINLINE	4.9			5.9	185.9			
TOTAL		83.2	403	536	1,511.6	622.0	577.2	1,492	1,049

STATION	LT./RT.	EACH
10+80	LT.	1
11+50	RT.	1
13+25	LT.	1
14+00	RT.	1
14+75	LT.	1
15+50	RT.	1
16+50	LT.	1
18+00	LT.	1
20+00	RT.	1
20+75	LT.	1
21+50	RT.	1
22+25	LT.	1
24+00	LT.	1
27+25	RT.	1
27+50	LT.	1
28+25	LT.	1
30+00	LT.	1
31+00	LT.	1
33+25	RT.	1
34+00	LT.	1
34+25	RT.	1
35+00	RT.	1
35+50	LT.	1
TOTAL		23

STATION	LT./RT.	6" FOOT	12" FOOT	24" FOOT
10+82 TO 36+57	MAINLINE	640		
10+37	LT.			11
12+12	LT.	59	36	11
15+72	LT.	58	36	11
19+32	LT.	59	36	11
25+12	LT.	60	36	11
25+13	RT.	59	36	11
25+37	MAINLINE	63	36	
28+46	MAINLINE	63	36	
28+72	LT.	59	36	11
28+73	RT.	60	36	11
32+25	RT.	59	36	11
36+23	RT.			11
36+30	MAINLINE	61	36	
TOTAL		1,300	396	110

STATION	LT./RT.	P.C.C. DRIVEWAY PAVEMENT 6" SQ YD	DRIVEWAY PAVEMENT REMOVAL SQ YD	SLOTTED DRAIN FOOT	HMA SURFACE REMOVAL 2" SQ YD
22+99	LT.	36.8			12.6
23+08	RT.	16.5			
24+22	RT.	24.1			
24+22	RT.	55.2	38.6	20	
26+04	RT.	24.1			

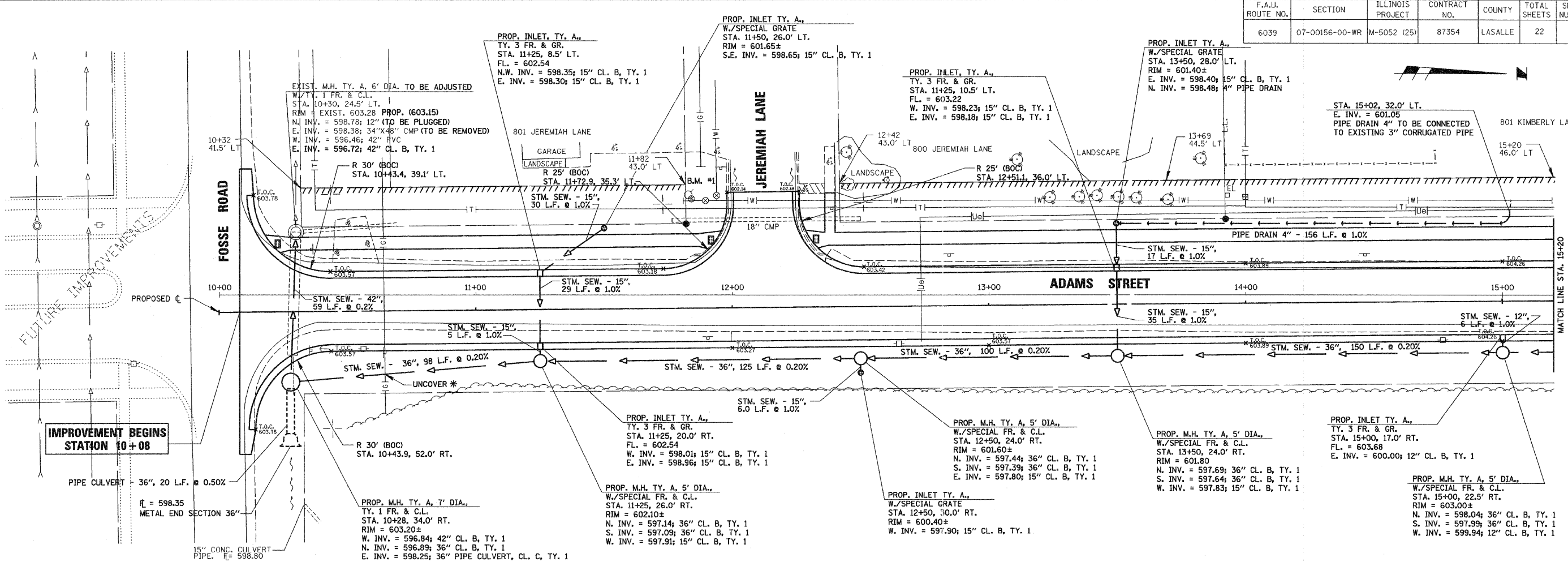
**ADAMS ST. WIDENING AND RESURFACING**

F.A.J. ROUTE NO.	SECTION	ILLINOIS PROJECT	CONTRACT NO.	COUNTY	TOTAL SHEETS	SHEET NUMBER
6039	07-00156-00-WR	M-5052 (25)	87354	LASALLE	22	5

BY	DATE

SURVEYED	PLOTTED	GRADES CHECKED	B.M.# NOTED	STRUCTURE NOTATIONS CHKD



\* NOTE: PRIOR TO CONSTRUCTION UNCOVER EXISTING GAS MAIN, EXISTING WATER MAIN, OR EXISTING UNDERGROUND ELECTIC TO DETERMINE LOCATION.

**PLAN**

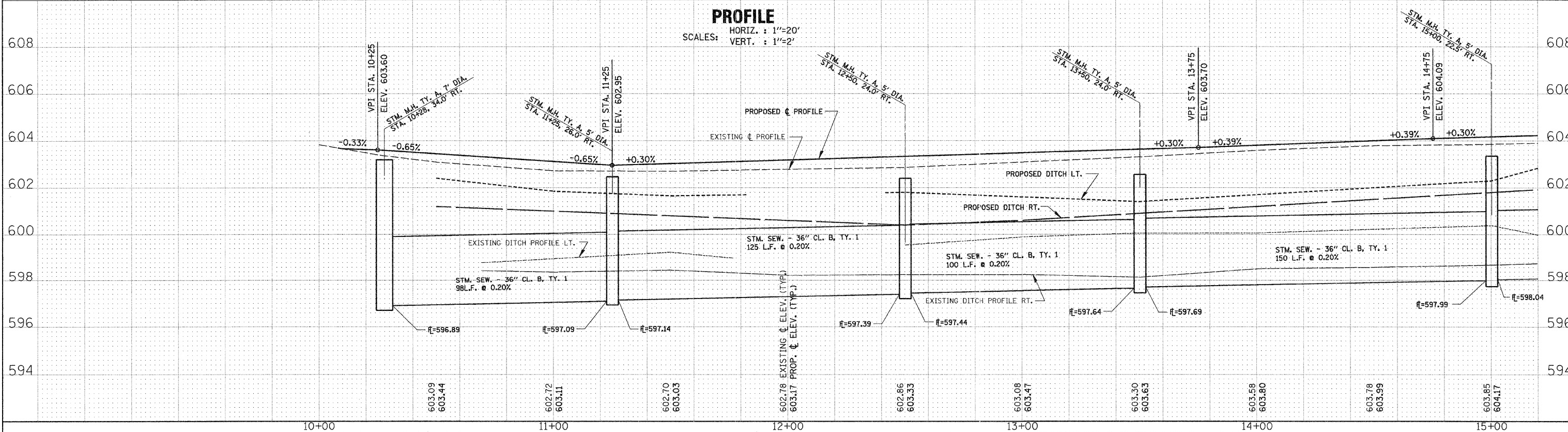
SCALE: 1"=20'

B.M. #1 "0" IN OPEN ON F.H. SW. COR. JEREMIAH LANE ELEV. = 603.22

BY	DATE

SURVEYED	PLOTTED	GRADES CHECKED	B.M.# NOTED	STRUCTURE NOTATIONS CHKD



**PROFILE**

HORIZ. : 1"=20'  
VERT. : 1"=2'



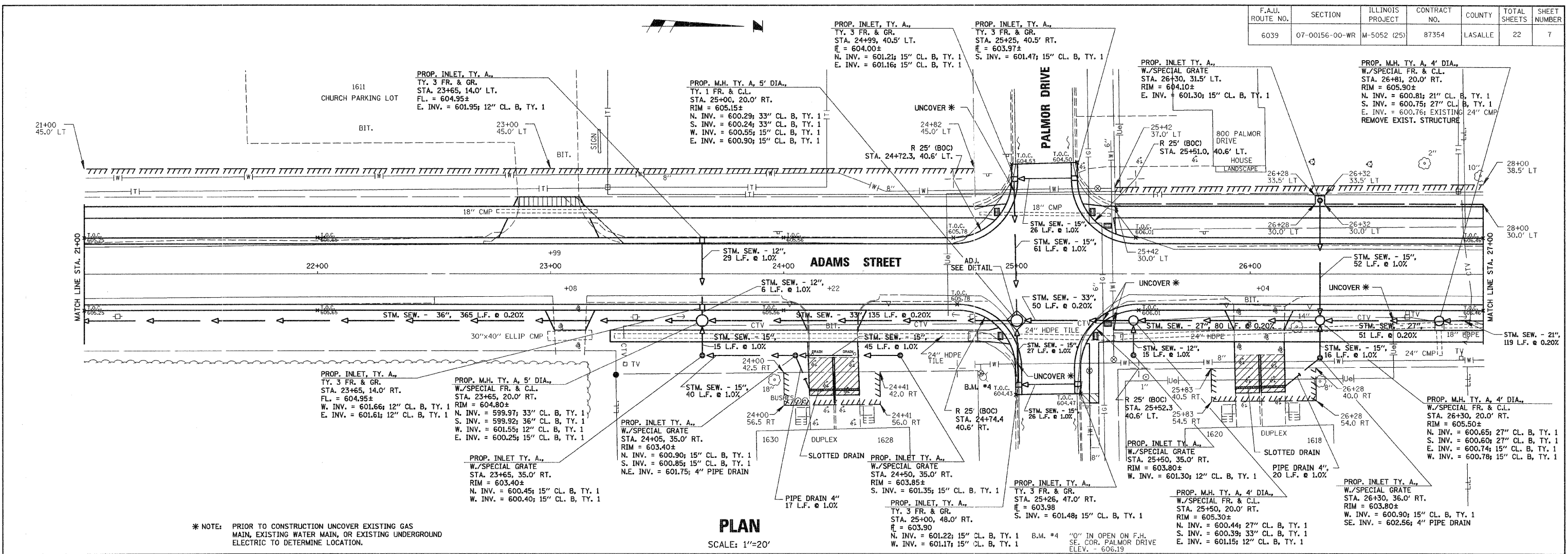


F.A.U. ROUTE NO.	SECTION	ILLINOIS PROJECT	CONTRACT NO.	COUNTY	TOTAL SHEETS	SHEET NUMBER
6039	07-00156-00-WR	M-5052 (25)	87354	LASALLE	22	7

**ADAMS ST. WIDENING AND RESURFACING**

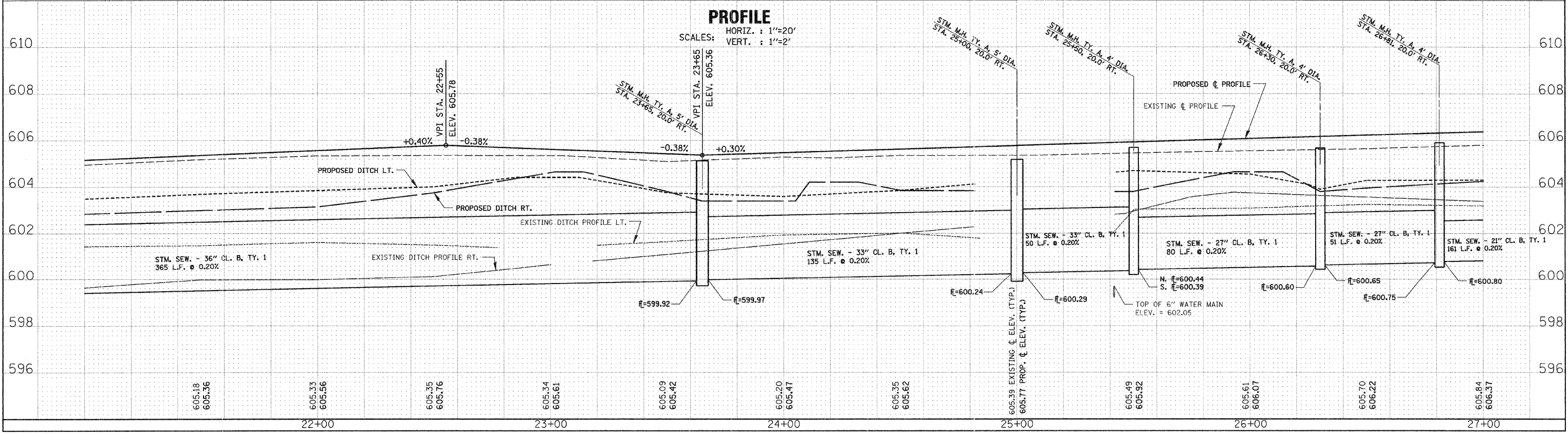
DATE	BY

DATE	BY



\* NOTE: PRIOR TO CONSTRUCTION UNCOVER EXISTING GAS MAIN, EXISTING WATER MAIN, OR EXISTING UNDERGROUND ELECTRIC TO DETERMINE LOCATION.

**PLAN**  
SCALE: 1"=20'



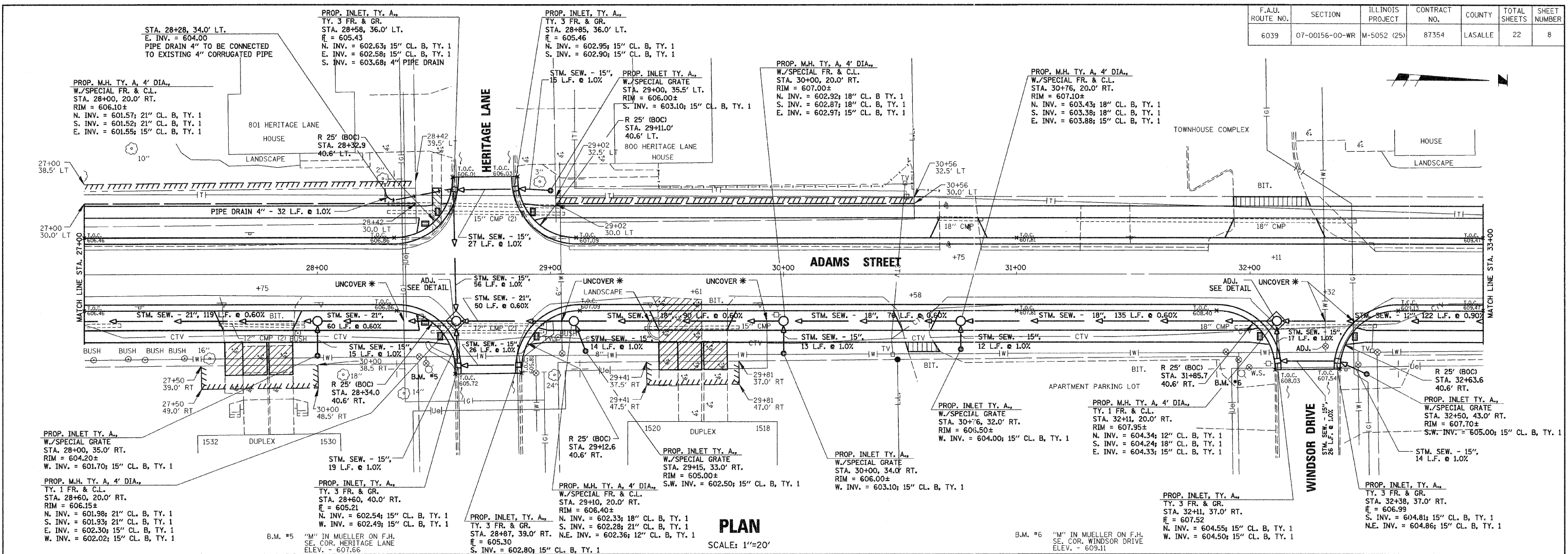
**PROFILE**  
SCALES: HORIZ. : 1"=20'  
VERT. : 1"=2'

**ADAMS ST. WIDENING AND RESURFACING**

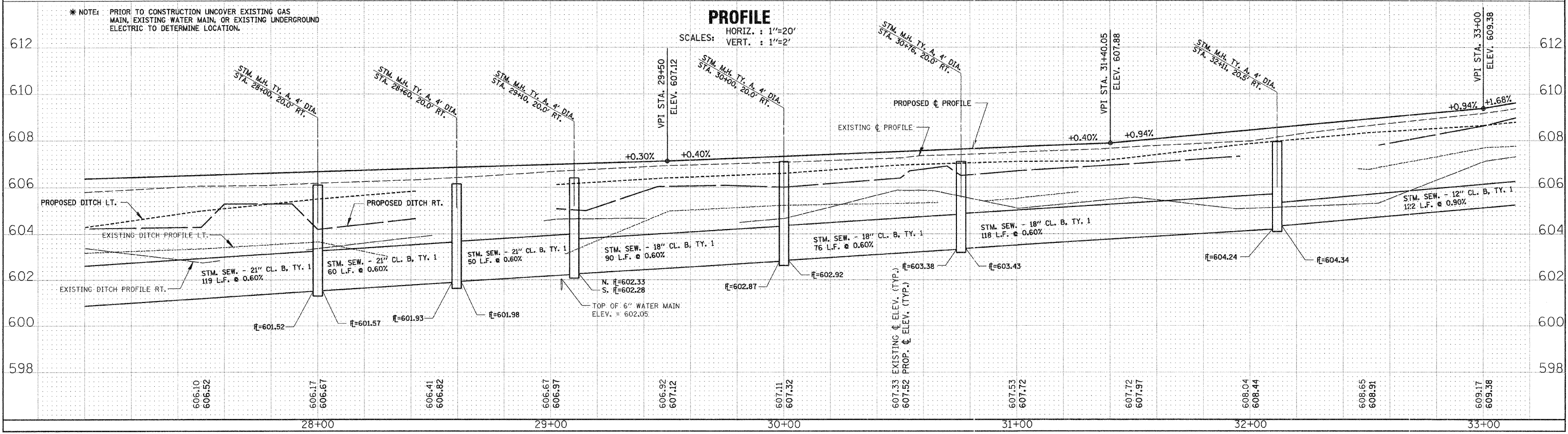
F.A.U. ROUTE NO.	SECTION	ILLINOIS PROJECT	CONTRACT NO.	COUNTY	TOTAL SHEETS	SHEET NUMBER
6039	07-00156-00-WR	M-5052 (25)	87354	LASALLE	22	8

DATE	BY

DATE	BY



**PLAN**  
SCALE: 1"=20'



**PROFILE**  
SCALES: HORIZ. : 1"=20'  
VERT. : 1"=2'





F.A.U. ROUTE NO.	SECTION	ILLINOIS PROJECT	CONTRACT NO.	COUNTY	TOTAL SHEETS	SHEET NUMBER
6039	07-00156-00-WR	M-5052 (25)	87354	LASALLE	22	10

# STORM WATER POLLUTION PREVENTION PLAN

## EROSION CONTROL AND SEDIMENTATION

- SOIL EROSION CONTROL MEASURES IN ACCORDANCE WITH THE "ILLINOIS URBAN MANUAL 1995" SHALL BE FOLLOWED AS DIRECTED BY THE OWNER, ENGINEER, OR CITY ENGINEER, AND SOIL EROSION CONTROL MEASURES, IN ADDITION TO THOSE OUTLINED IN THESE PLANS AND WHICH ARE DEEMED NECESSARY BY THE OWNER, ENGINEER AND/OR CITY ENGINEER, SHALL BE IMPLEMENTED IMMEDIATELY BY THE CONTRACTOR.
- PERIODIC INSPECTION AND MAINTENANCE OF ALL EROSION CONTROL FACILITIES SHALL BE PROVIDED TO INSURE INTENDED PURPOSE IS ACCOMPLISHED.
- STREETS ADJACENT TO THE SITE SHALL BE KEPT FREE OF DIRT, MUD AND DEBRIS ON A DAILY BASIS.
- NO SEDIMENT SHALL BE ALLOWED TO ENTER THE 42" STORM SEWER ON FOSSE ROAD.
- IN ACCORDANCE WITH THESE CONSTRUCTION PLANS, INLET AND PIPE PROTECTION SHALL BE INSTALLED AND MAINTAINED AT THE DESIGNATED SHOWN ON SHEET 4 UNTIL VEGETATION IS ESTABLISHED AND/OR CONSTRUCTION IS COMPLETE.
- ALL STORM SEWERS AND INLETS PROVIDED WITHIN THIS PROJECT ARE TO BE CLEANED AT THE END OF CONSTRUCTION OF THE PROJECT AND PRIOR TO FINAL ACCEPTANCE. CLEANING MAY ALSO BE REQUIRED DURING THE COURSE OF THE CONSTRUCTION OF THE PROJECT IF IT IS DETERMINED THAT THE SILT AND DEBRIS TRAPS ARE NOT PROPERLY FUNCTIONING AND THEIR PERFORMANCE IS IMPAIRED.
- SEEDING, FERTILIZER, AND PLACEMENT OF EROSION CONTROL BLANKET OF THE DISTURBED AREAS AS REQUIRED SHALL BE ACCOMPLISHED IMMEDIATELY AFTER FINISHED GRADING.
- UNLESS SOIL EROSION CONTROL ITEMS ARE SPECIFICALLY REFERRED AS BID ITEMS (SUCH AS SEEDING, TEMPORARY DITCH CHECKS, EROSION CONTROL BLANKET ETC.), THEY ARE TO BE CONSIDERED AS INCIDENTAL TO THE COST OF THE CONTRACT.
- STABILIZATION MEASURES SHALL BE INITIATED AS SOON AS PRACTICAL IN PORTIONS OF THE SITE WHERE CONSTRUCTION ACTIVITIES HAVE TEMPORARILY OR PERMANENTLY CEASED, BUT IN NO CASE MORE THAN 14 DAYS AFTER THE CONSTRUCTION ACTIVITY IN THAT PORTION OF THE SITE HAS TEMPORARILY OR PERMANENTLY CEASED ON ALL DISTURBED PORTIONS OF THE SITE WHERE CONSTRUCTION ACTIVITY WILL NOT OCCUR FOR A PERIOD OF 21 OR MORE CALENDAR DAYS.
- SEE HIGHWAY STANDARD 280001-04 TEMPORARY EROSION CONTROL SYSTEMS FOR INLET AND PIPE PROTECTION.

## SEQUENCE FOR SOIL EROSION CONTROL ITEMS

EACH RESPECTIVE CONTRACTOR IS RESPONSIBLE FOR THE INSTALLATION, MAINTENANCE AND ANY NECESSARY CORRECTIVE ACTION ASSOCIATED WITH THE EROSION CONTROL MEASURES SO DESIGNATED FOR THAT CONTRACTOR. THE FOLLOWING ITEMS ARE TO BE PROVIDED BY THE DESIGNATED CONTRACTOR AT THE TIME AND IN THE GENERAL SEQUENCE INDICATED BELOW.

- INSTALL ALL STORM SEWERS, PIPE CULVERTS, AND DRAINAGE STRUCTURES.
- INSTALL INLET AND PIPE PROTECTION AT LOCATIONS SHOWN ON SHEET 4 AND SHEET 11 OF THE PLANS.
- PERFORM EARTH EXCAVATION AND PLACE EMBANKMENT.
- INSTALL TEMPORARY DITCH CHECKS AT LOCATIONS SHOWN ON SHEET 4 AND SHEET 11 THE PLANS.
- PLACE TOPSOIL, FERTILIZER, AND SEED.
- INSTALL EROSION CONTROL BLANKET IMMEDIATELY AFTER SEEDING IS COMPLETED.

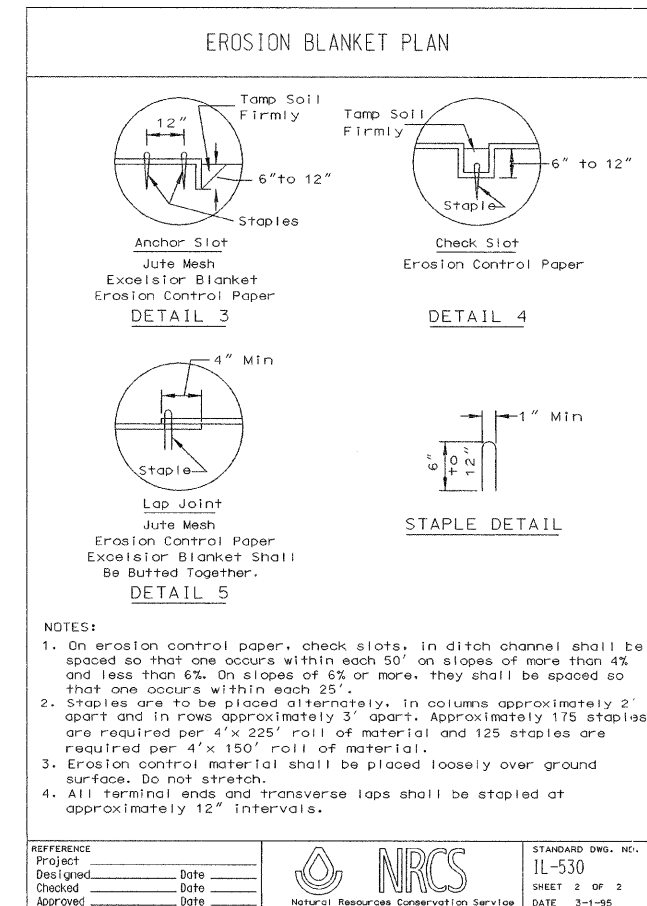
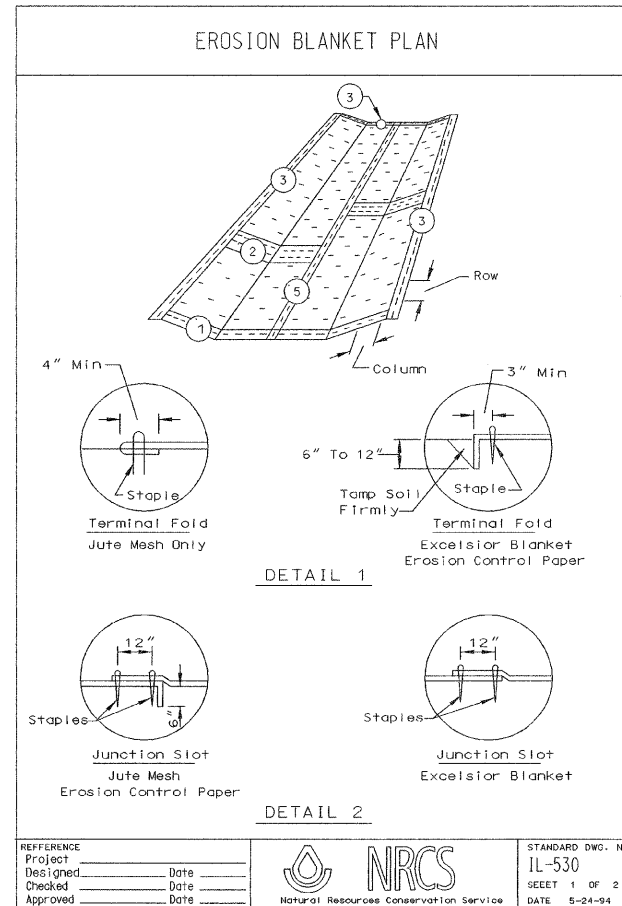
\*DITCH CHECKS SHALL BE FROM THE CURRENT I.D.O.T. APPROVED LIST OF TEMPORARY DITCH CHECKS.

THE PRODUCTS ON THE I.D.O.T. APPROVED LIST OF TEMPORARY DITCH CHECKS AS OF 2/08/08 ARE:  
 "ENVIROBERM" MANUFACTURED BY CASCADE DISTRIBUTION, LTD  
 "GEORIDGE" MANUFACTURED BY NILEX CORPORATION  
 "TRIANGULAR SILT DIKE" MANUFACTURED BY TRIANGULAR SILT DIKE COMPANY, INC.

HAY OR STRAW BALE DITCH CHECKS SHALL NOT BE USED

PLAN	SURVEYED	DATE
	PLOTTED	BY
PROFILE	GRADES CHECKED	
	STRUCTURE NOTATIONS CHKD	

PROFILE	SURVEYED	DATE
	PLOTTED	BY
PLAN	GRADES CHECKED	
	STRUCTURE NOTATIONS CHKD	

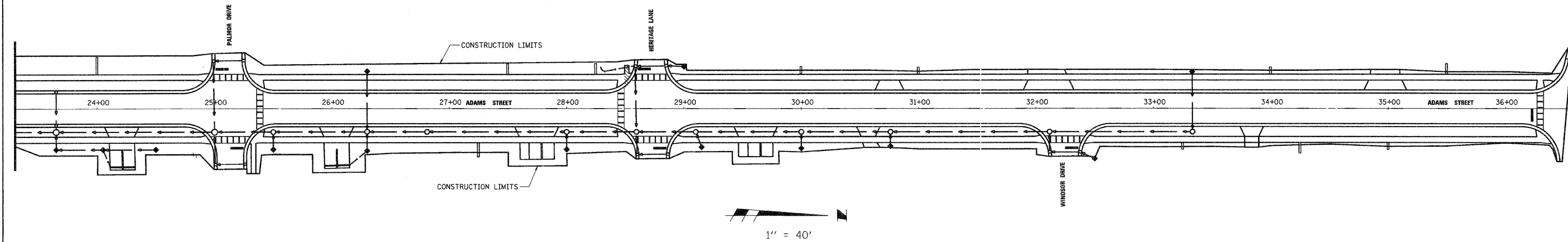
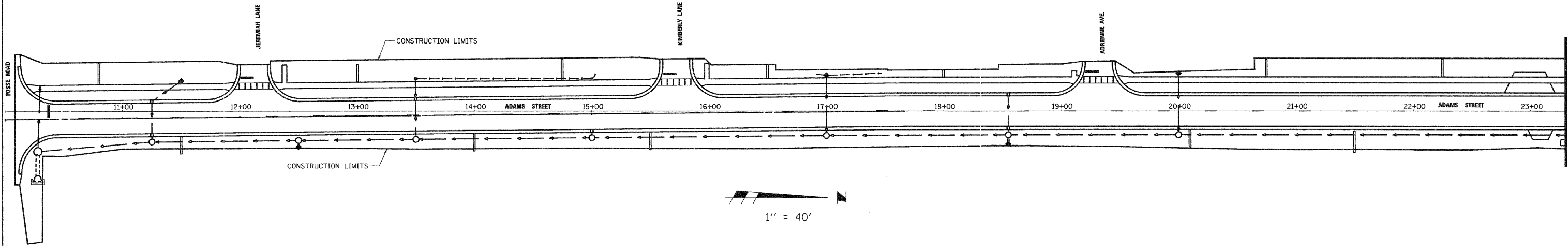


F.A.U. ROUTE NO.	SECTION	ILLINOIS PROJECT	CONTRACT NO.	COUNTY	TOTAL SHEETS	SHEET NUMBER
6039	07-00156-00-WR	M-5052 (25)	87354	LASALLE	22	11

## STORM WATER POLLUTION PREVENTION SITE PLAN & PAVEMENT MARKING DETAIL

PLAN	BY	DATE
SURVEYED		
PLOTTED		
GRADES CHECKED		
B.M.# NOTED		
STRUCTURE NOTATIONS CHKD		

PROFILE	BY	DATE
SURVEYED		
PLOTTED		
GRADES CHECKED		
B.M.# NOTED		
STRUCTURE NOTATIONS CHKD		



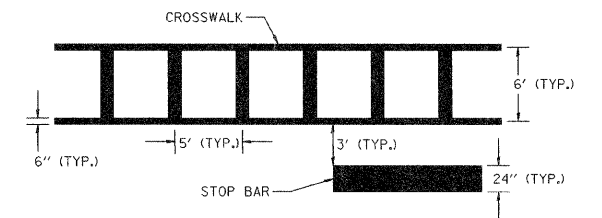
**LEGEND**

- ◆ INLET & PIPE PROTECTION
- DITCH CHECKS \*

\* SEE NOTE ON SHEET 10



**SKIP DASH DETAIL**  
NOT TO SCALE



**PAVEMENT MARKING DETAIL**  
NOT TO SCALE

ADAMS STREET WIDENING & RESURFACING

F.A.U. ROUTE NO.	SECTION	ILLINOIS PROJECT	CONTRACT NO.	COUNTY	TOTAL SHEETS	SHEET NUMBER
6039	07-00156-00-WR	M-5052 (25)	87354	LASALLE	22	12

**PLAN**

DATE: \_\_\_\_\_ BY: \_\_\_\_\_

NOTE BOOK: \_\_\_\_\_

SURVEYED: \_\_\_\_\_ PLOTTED: \_\_\_\_\_

GRADES CHECKED: \_\_\_\_\_

B.M.'S NOTED: \_\_\_\_\_

STRUCTURE NOTATIONS CHECKED: \_\_\_\_\_

**PROFILE**

DATE: \_\_\_\_\_ BY: \_\_\_\_\_

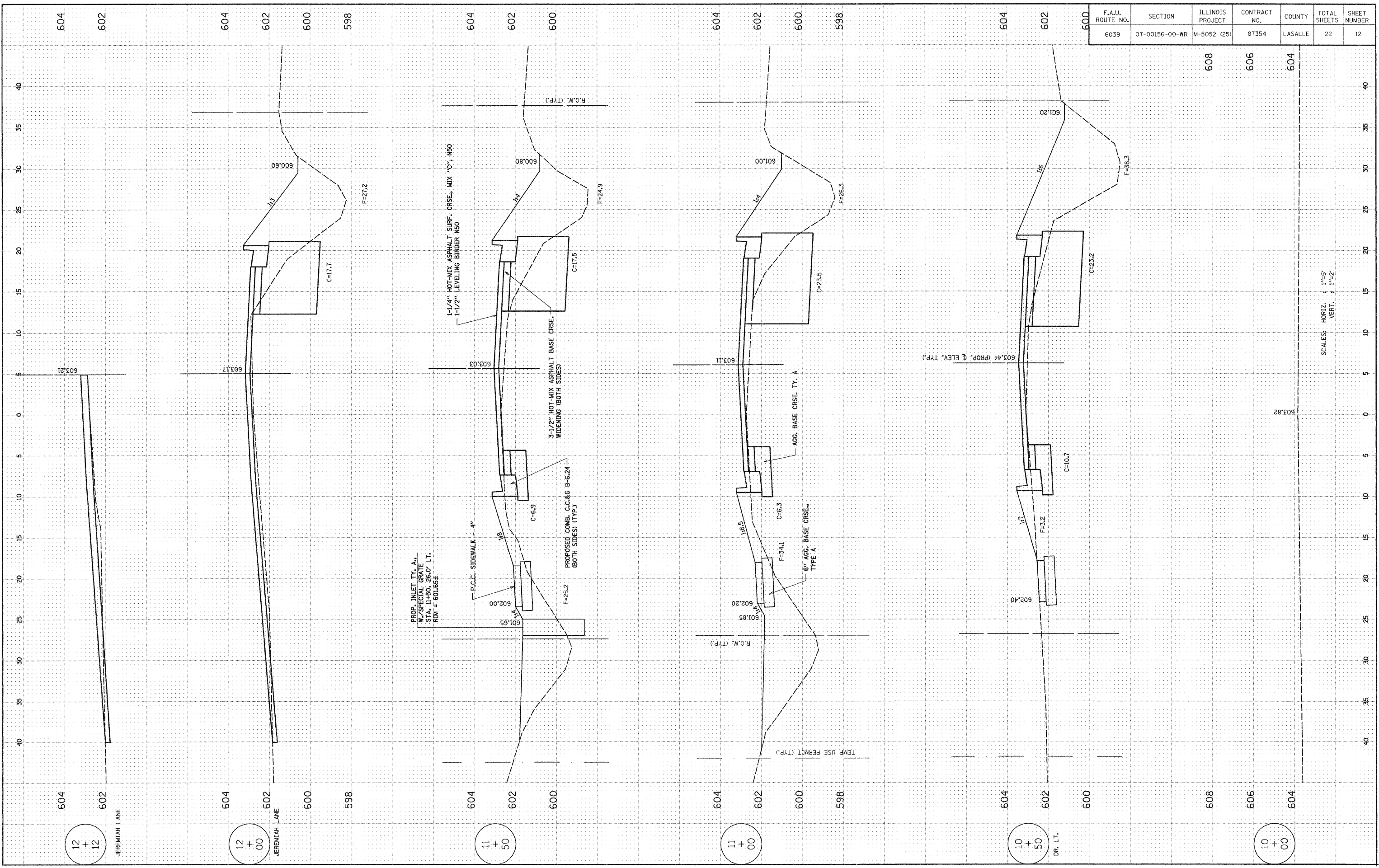
NOTE BOOK: \_\_\_\_\_

SURVEYED: \_\_\_\_\_ PLOTTED: \_\_\_\_\_

GRADES CHECKED: \_\_\_\_\_

B.M.'S NOTED: \_\_\_\_\_

STRUCTURE NOTATIONS CHECKED: \_\_\_\_\_







ADAMS STREET WIDENING & RESURFACING

F.A.U. ROUTE NO.	SECTION	ILLINOIS PROJECT	CONTRACT NO.	COUNTY	TOTAL SHEETS	SHEET NUMBER
6039	07-00156-00-WR	M-5052 (25)	87354	LASALLE	22	14

**PLAN**

SURVEYED	PLOTTED	GRADES CHECKED	DATE
BY	BY	BY	BY
DATE	DATE	DATE	DATE

NOTE BOOK NO. \_\_\_\_\_

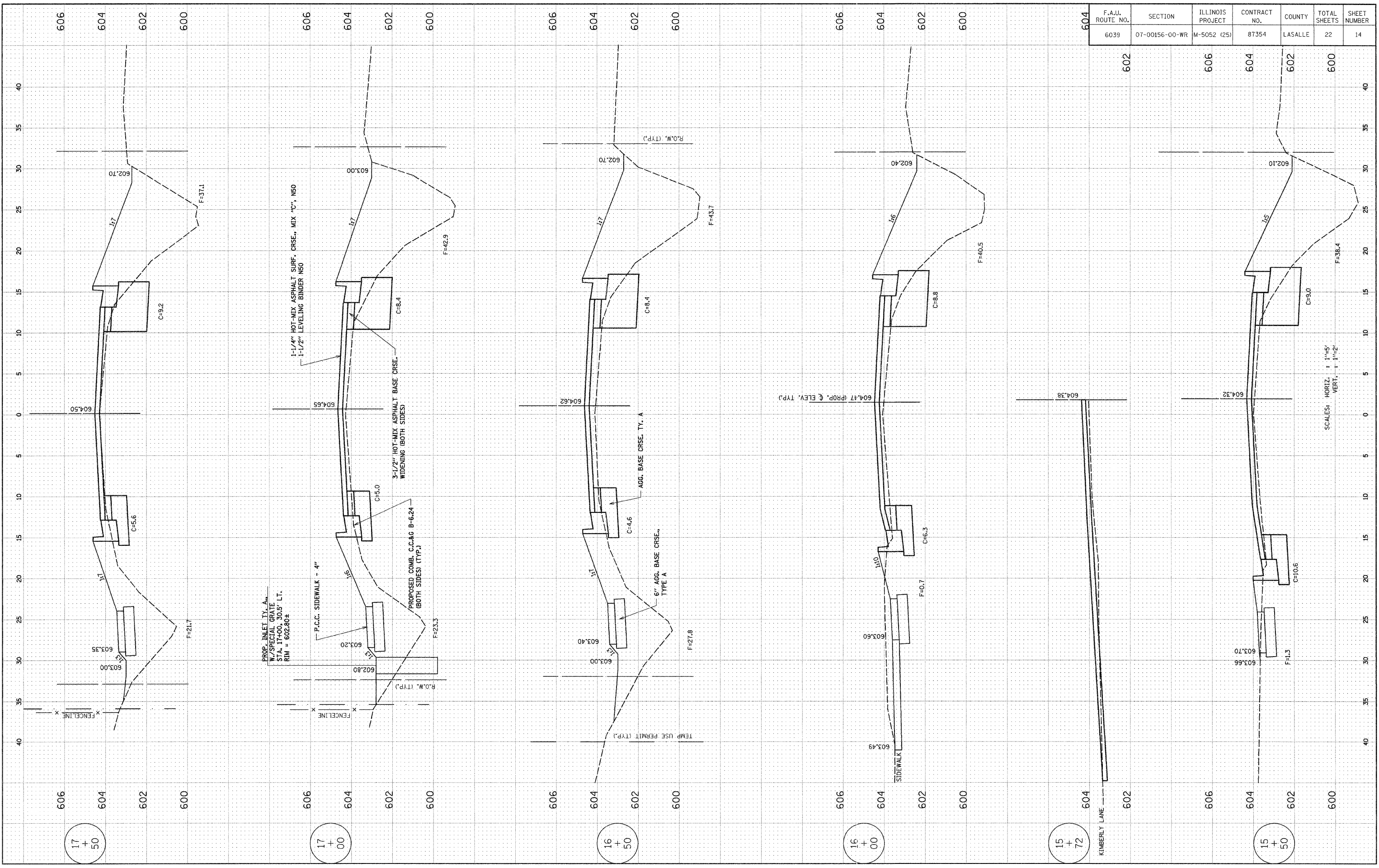
STRUCTURE NOTATIONS CHKD

**PROFILE**

SURVEYED	PLOTTED	GRADES CHECKED	DATE
BY	BY	BY	BY
DATE	DATE	DATE	DATE

NOTE BOOK NO. \_\_\_\_\_

STRUCTURE NOTATIONS CHKD



SCALES: HORIZ. 1"=5'  
VERT. 1"=2'

ADAMS STREET WIDENING & RESURFACING

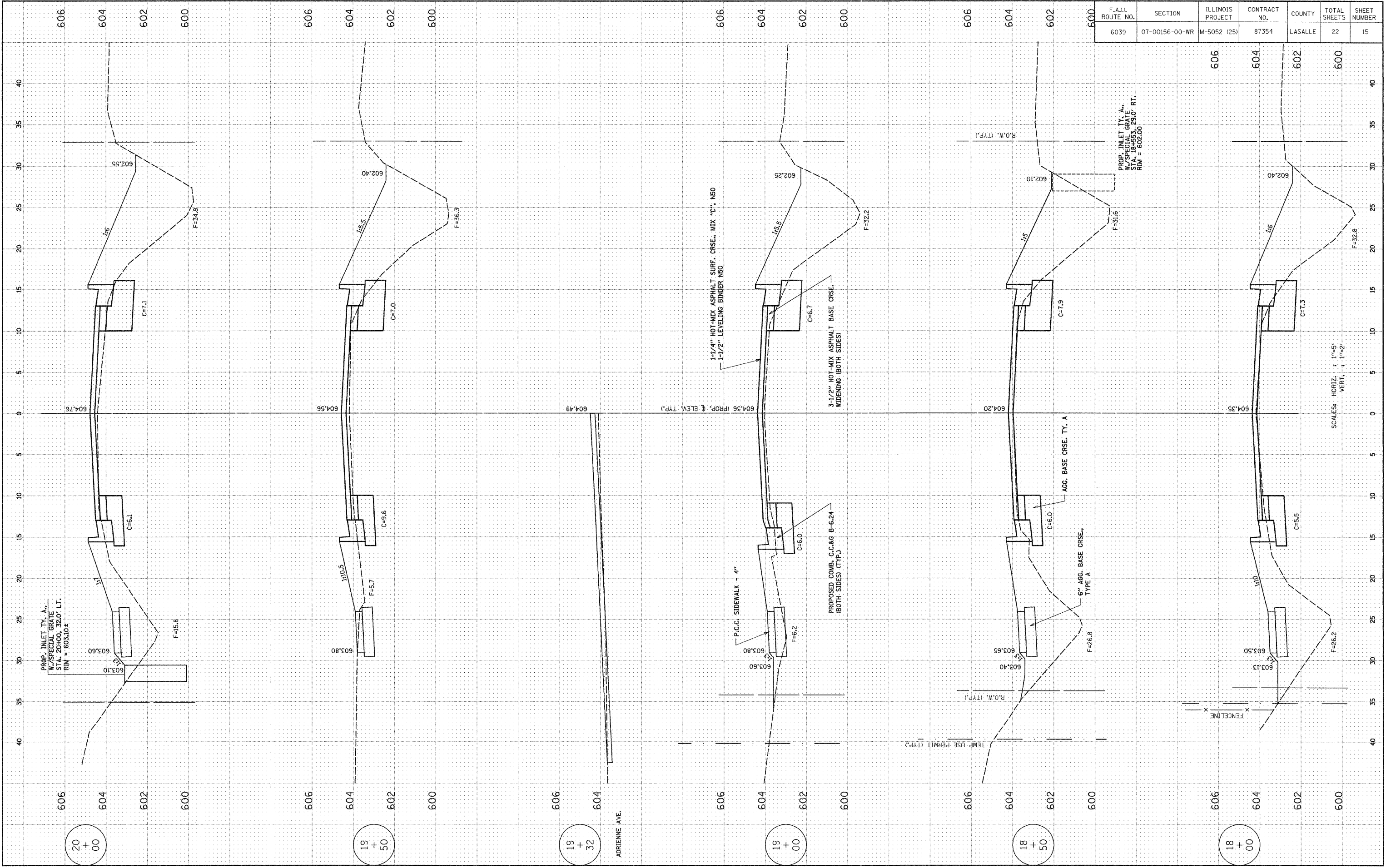
F.A.U. ROUTE NO.	SECTION	ILLINOIS PROJECT	CONTRACT NO.	COUNTY	TOTAL SHEETS	SHEET NUMBER
6039	07-00156-00-WR	M-5052 (25)	87354	LASALLE	22	15

PLAN

SURVEYED	BY	DATE
PLOTTED		
GRADES CHECKED		
SCALE NOTED		
STRUCTURE NOTATIONS CHKD		

PROFILE

SURVEYED	BY	DATE
PLOTTED		
GRADES CHECKED		
SCALE NOTED		
STRUCTURE NOTATIONS CHKD		



SCALES: HORIZ. : 1"=5'  
VERT. : 1"=2'







ADAMS STREET WIDENING & RESURFACING

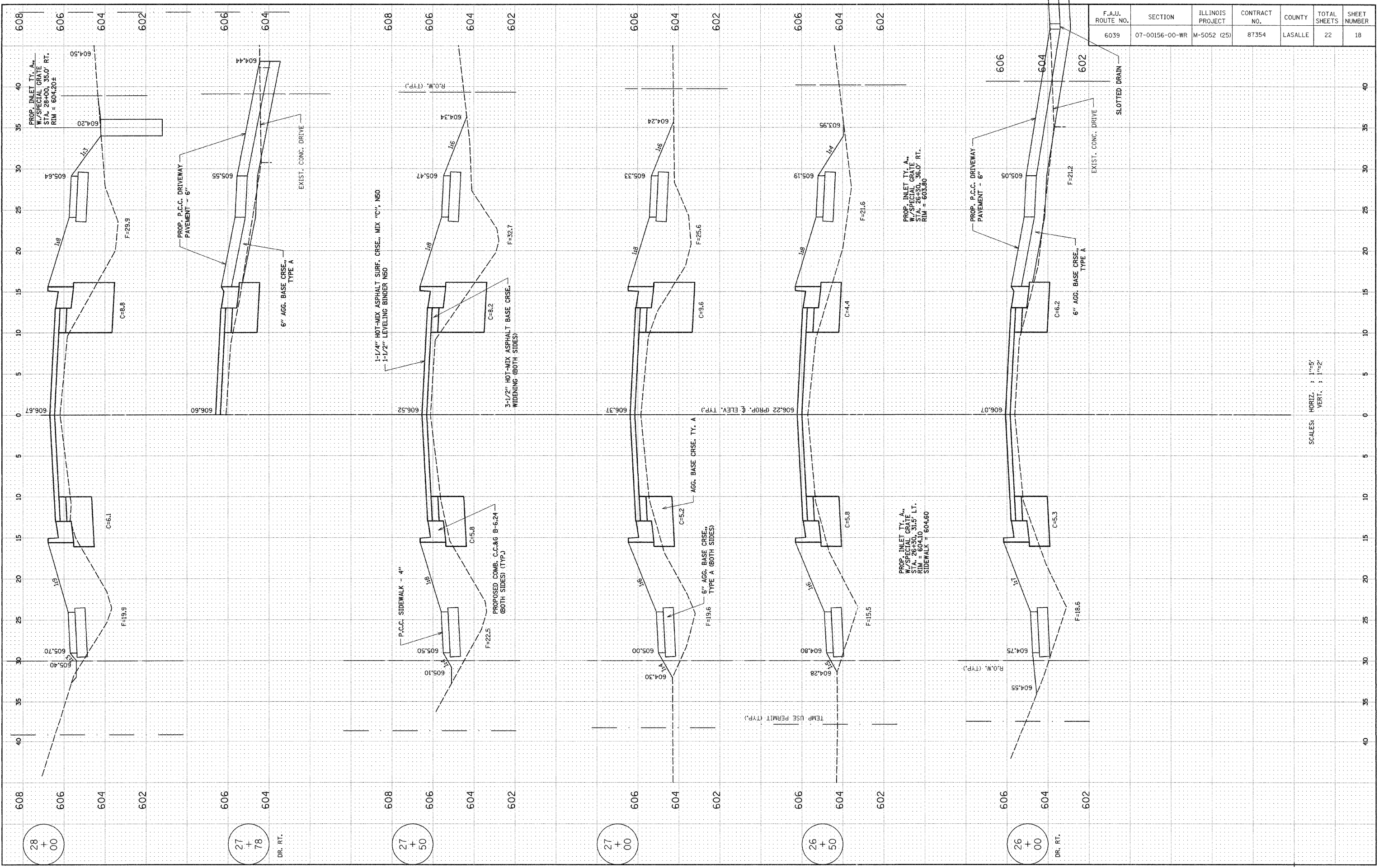
F.A.U. ROUTE NO.	SECTION	ILLINOIS PROJECT	CONTRACT NO.	COUNTY	TOTAL SHEETS	SHEET NUMBER
6039	07-00156-00-WR	M-5052 (25)	87354	LASALLE	22	18

**PLAN**

BY	DATE
SURVEYED	
PLOTTED	
GRADES CHECKED	
SCALE NOTED	
STRUCTURE NOTATIONS CHECKED	

**PROFILE**

BY	DATE
SURVEYED	
PLOTTED	
GRADES CHECKED	
SCALE NOTED	
STRUCTURE NOTATIONS CHECKED	



28 + 00

27 + 78

27 + 50

27 + 00

26 + 50

26 + 00







ADAMS STREET WIDENING & RESURFACING

F.A.U. ROUTE NO.	SECTION	ILLINOIS PROJECT	CONTRACT NO.	COUNTY	TOTAL SHEETS	SHEET NUMBER
6039	07-00156-00-WR	M-5052 (25)	87354	LASALLE	22	21

**PLAN**

BY: \_\_\_\_\_ DATE: \_\_\_\_\_

NOTE BOOK NO. \_\_\_\_\_

SURVEYED \_\_\_\_\_ PLOTTED \_\_\_\_\_

GRADES CHECKED \_\_\_\_\_

B.M.'S NOTED \_\_\_\_\_

STRUCTURE NOTATIONS CHKD \_\_\_\_\_

**PROFILE**

BY: \_\_\_\_\_ DATE: \_\_\_\_\_

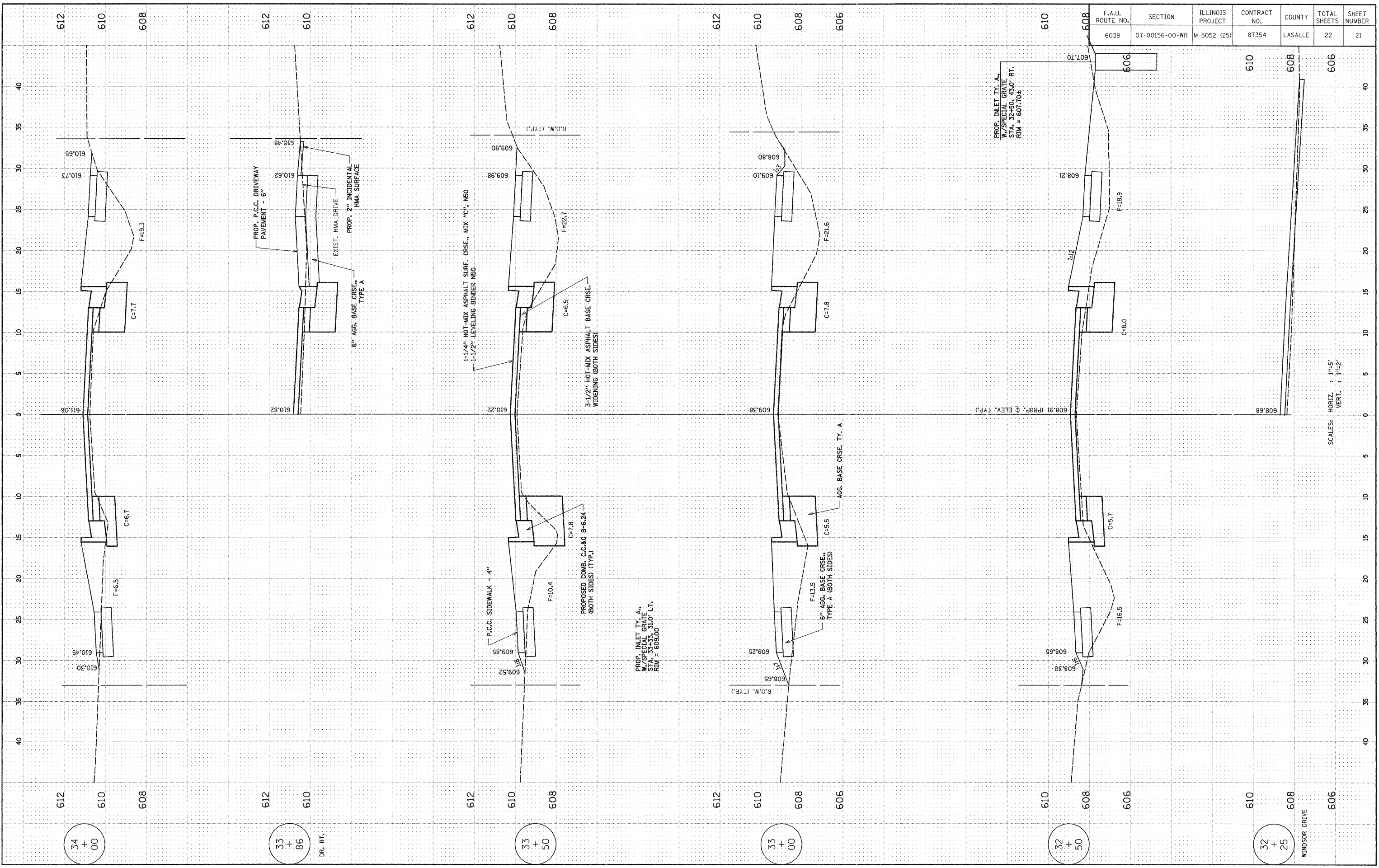
NOTE BOOK NO. \_\_\_\_\_

SURVEYED \_\_\_\_\_ PLOTTED \_\_\_\_\_

GRADES CHECKED \_\_\_\_\_

B.M.'S NOTED \_\_\_\_\_

STRUCTURE NOTATIONS CHKD \_\_\_\_\_



PROP. INLET TY. A,  
W/SPECIAL GRATE  
STA. 32+50, 43.0' RT.  
RIM = 607.70±

SCALES: HORIZ. 1" = 10'  
VERT. 1" = 2'

ADAMS STREET WIDENING & RESURFACING

F.A.U. ROUTE NO.	SECTION	ILLINOIS PROJECT	CONTRACT NO.	COUNTY	TOTAL SHEETS	SHEET NUMBER
6039	07-00156-00-WR	M-5052 (25)	87354	LASALLE	22	22

**PLAN**

BY: \_\_\_\_\_ DATE: \_\_\_\_\_

NO. \_\_\_\_\_

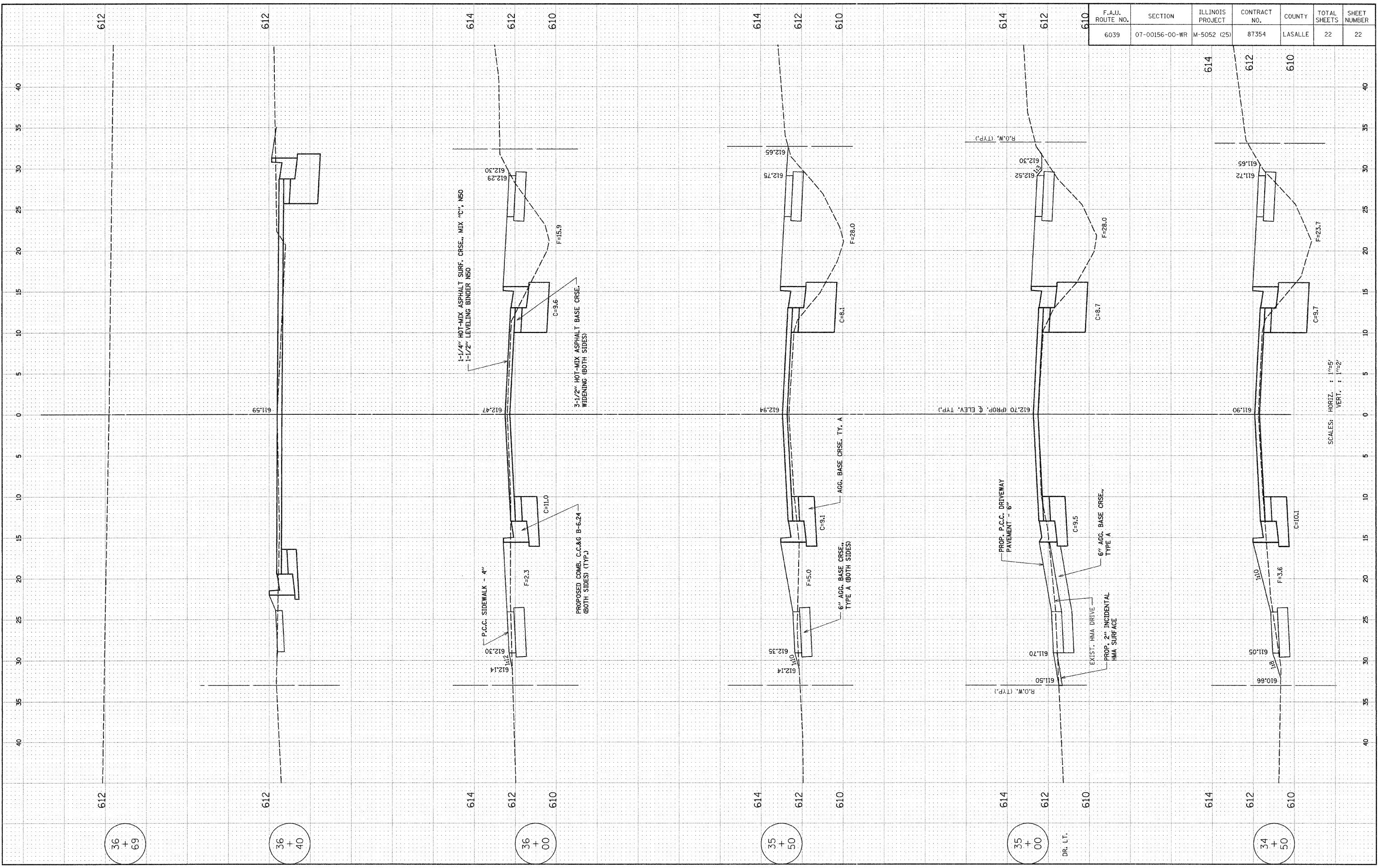
SURVEYED \_\_\_\_\_ PLOTTED \_\_\_\_\_  
 GRADES CHECKED \_\_\_\_\_  
 BALD NOTED \_\_\_\_\_  
 STRUCTURE NOTATIONS CHFD \_\_\_\_\_

**PROFILE**

BY: \_\_\_\_\_ DATE: \_\_\_\_\_

NO. \_\_\_\_\_

SURVEYED \_\_\_\_\_ PLOTTED \_\_\_\_\_  
 GRADES CHECKED \_\_\_\_\_  
 BALD NOTED \_\_\_\_\_  
 STRUCTURE NOTATIONS CHFD \_\_\_\_\_



36  
+  
69

36  
+  
40

36  
+  
00

35  
+  
50

35  
+  
00

34  
+  
50

SCALES: HORIZ. 1"=25'  
VERT. 1"=2'