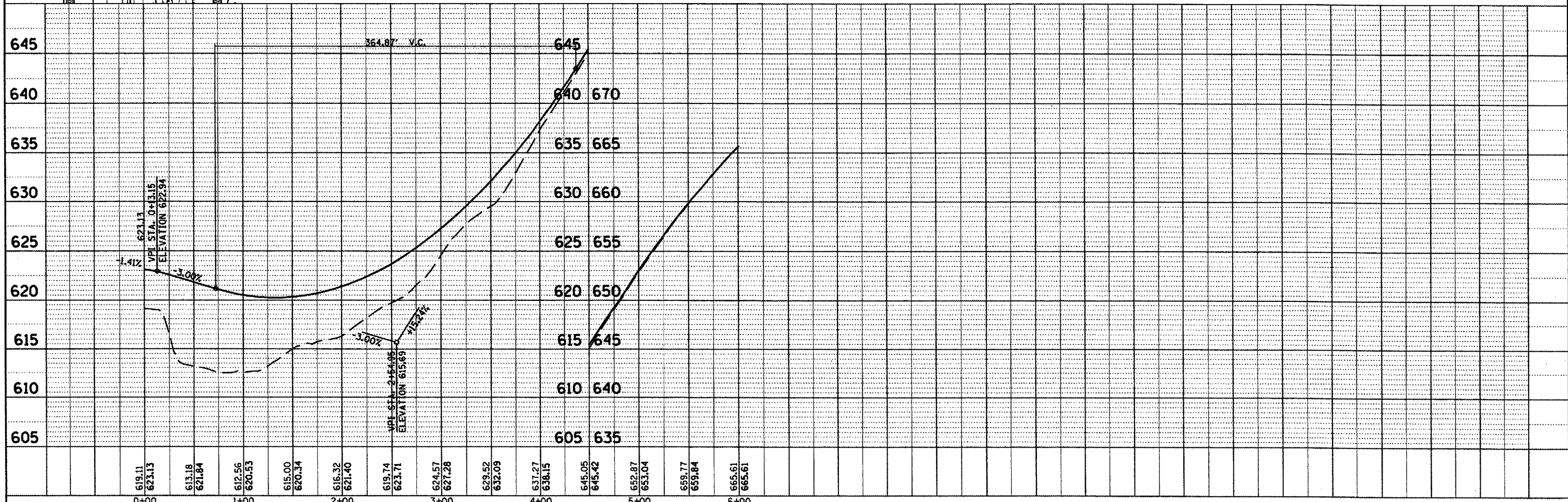
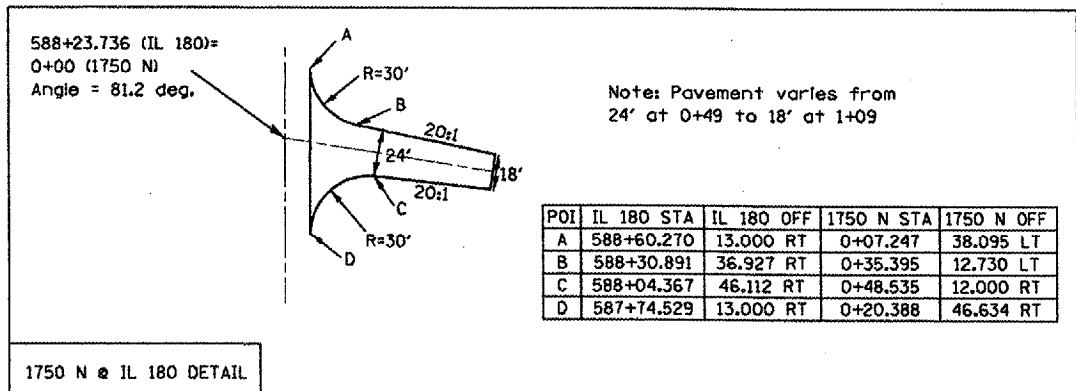
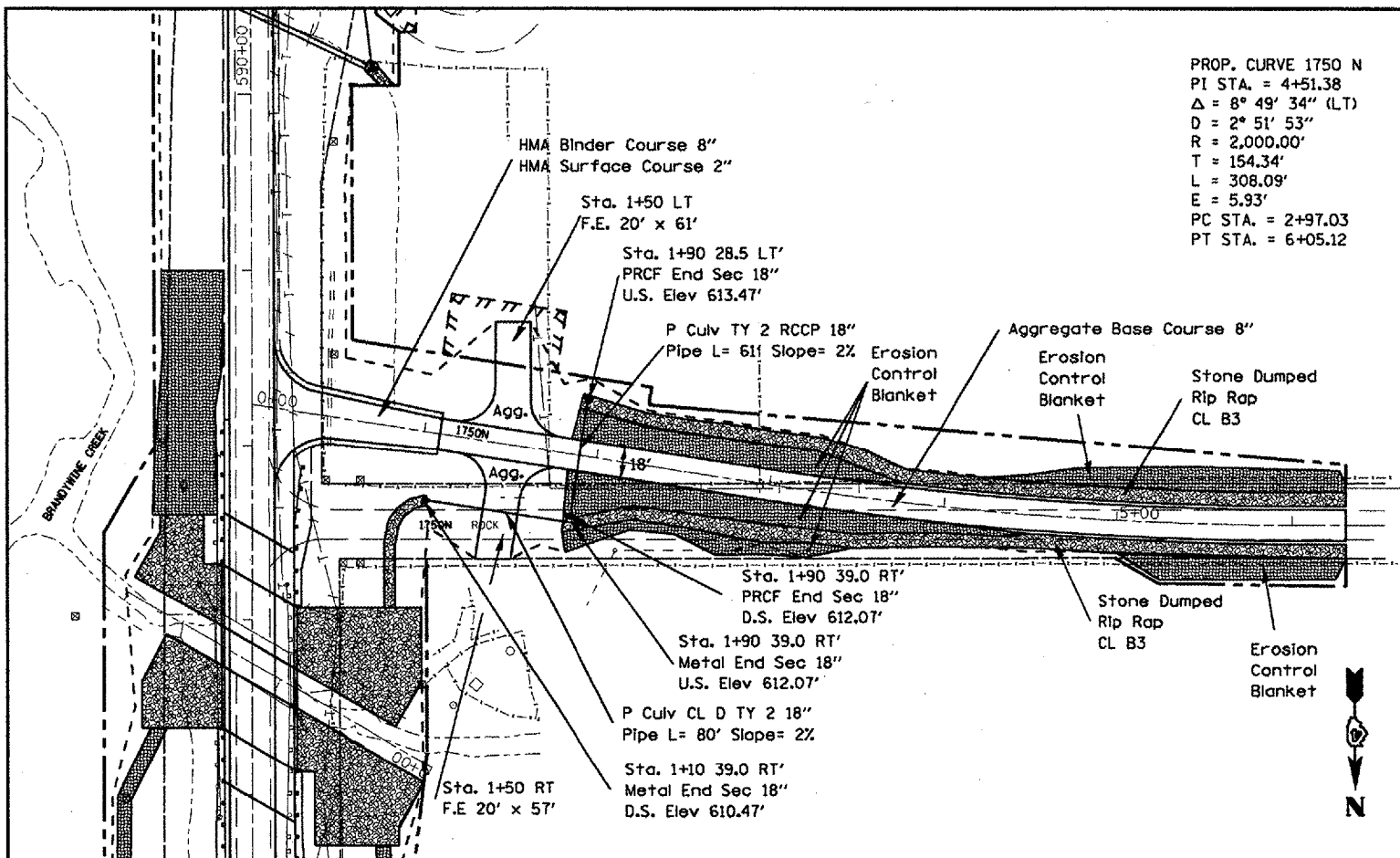


DATE	
BY	
DESIGNED	
DRAWN	
CHECKED	
DATE	
NO.	

DATE	
BY	
DESIGNED	
DRAWN	
CHECKED	
DATE	
NO.	

PROP. CURVE 1750 N  
 PI STA. = 4+51.38  
 $\Delta = 8^\circ 49' 34''$  (LT)  
 $D = 2^\circ 51' 53''$   
 $R = 2,000.00'$   
 $T = 154.34'$   
 $L = 308.09'$   
 $E = 5.93'$   
 PC STA. = 2+97.03  
 PT STA. = 6+05.12



FILE NAME = c:\projects\1180bridge\general.dgn	USER NAME = hudelaonne	DESIGNED -	REVISED -	<b>STATE OF ILLINOIS</b> <b>DEPARTMENT OF TRANSPORTATION</b>	<b>Proposed Plan &amp; Profile</b>	F.A.S. RTE. 1195	SECTION (112B)BR-3	COUNTY KNOX	TOTAL SHEETS 76	SHEET NO. 17		
PLOT SCALE = 100.000' / IN.	PLOT DATE = 12/10/2007	DRAWN -	REVISED -			SCALE:	SHEET NO. OF SHEETS	STA.	TO STA.	CONTRACT NO. 88896		
		CHECKED -	REVISED -			FED. ROAD DIST. NO. ILLINOIS FED. AID PROJECT						
		DATE -	REVISED -									