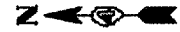


F.A.S. RTE.	SECTION	COUNTY	TOTAL SHEETS	SHEET NO.
1195	(112)BR-3	KNOX	76	20

STA.	TO STA.
FED. ROAD DIST. NO.	ILLINOIS FED. AID PROJECT

SECTION 2 T11N R4E  
4TH P.M.



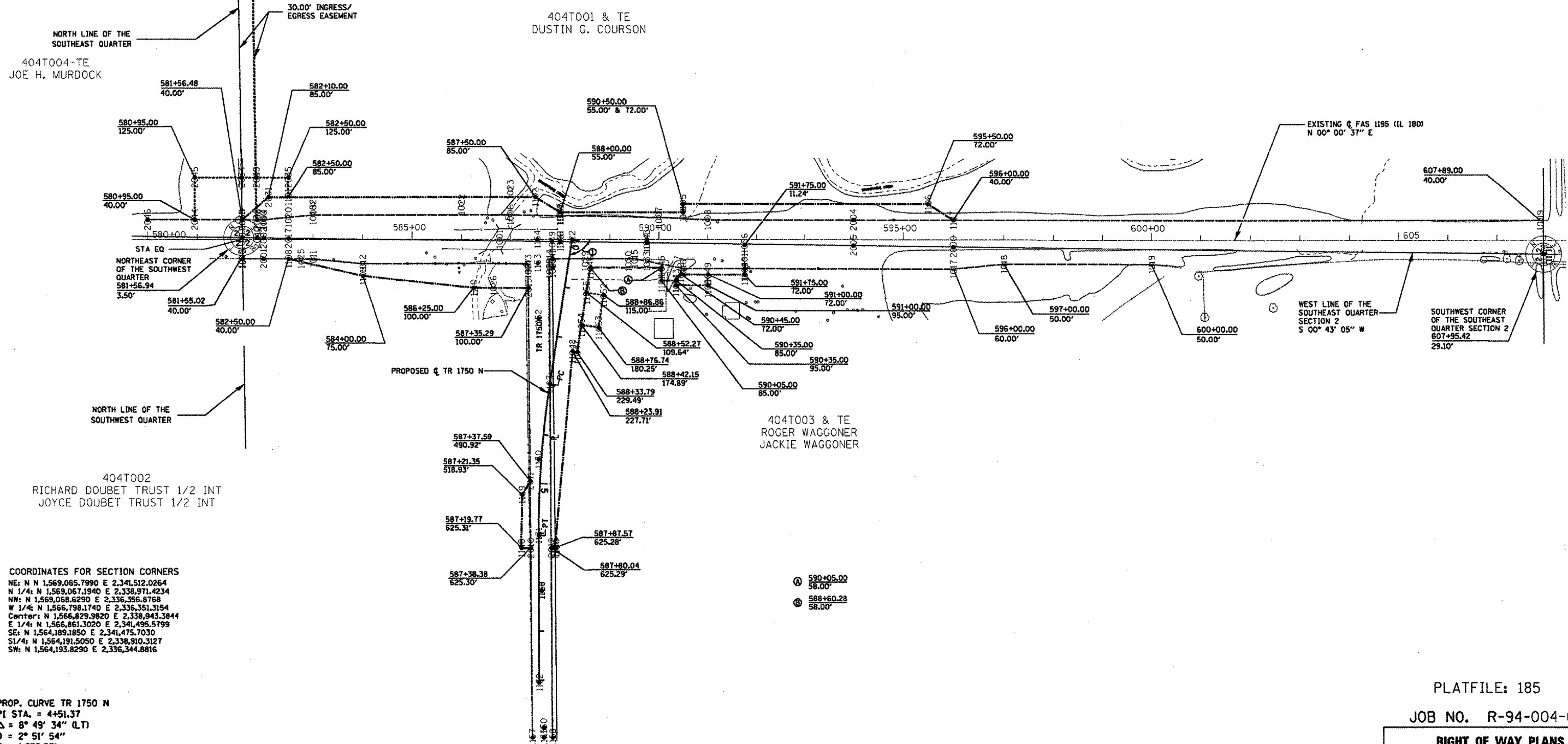
LEGEND

- EXISTING RIGHT OF WAY LINE ———
- PROPOSED RIGHT OF WAY LINE - - - - -
- PROPOSED TEMPORARY EASEMENT LINE - - - - -

① 98°48'00" 297.3'

APPROVED BY \_\_\_\_\_  
DISTRICT ENGINEER

DATE \_\_\_\_\_



COORDINATES FOR SECTION CORNERS

NE: N N 1,569,065.7990 E 2,341,512.0264  
 N 1/4: N 1,569,067.1940 E 2,338,971.4234  
 NW: N 1,569,068.6290 E 2,336,356.8768  
 W 1/4: N 1,566,798.1740 E 2,336,351.3154  
 Center: N 1,566,829.9820 E 2,338,943.3844  
 E 1/4: N 1,566,861.3020 E 2,341,495.5799  
 SE: N 1,564,189.1850 E 2,341,475.7030  
 S 1/4: N 1,564,191.5050 E 2,338,910.3127  
 SW: N 1,564,193.8290 E 2,336,344.8816

PROP. CURVE TR 1750 N  
 PI STA. = 4+51.37  
 $\Delta = 8^\circ 49' 34''$  (LT)  
 D = 2° 51' 54"  
 R = 1,999.87'  
 T = 154.34'  
 L = 308.07'  
 E = 5.95'  
 P.C. STA = 2+97.03  
 P.T. STA = 6+05.10

STA EQ

STA 581+89.24 (BK)  
 STA 581+55.01 (AH)

EXIST  $\odot$  180 STA 588+23.74+  
 PROP  $\odot$  1750 N STA. 00+00.00

PLATFILE: 185

JOB NO. R-94-004-02

RIGHT OF WAY PLANS  
FAS ROUTE 1195 (IL 180)

PROJECT \_\_\_\_\_ SECTION (112)BR-3  
 STATION 581+55.02 TO  
 STATION 607+95.42  
 COUNTY KNOX  
 SHEET 1 OF 1

FOR OLD ROW SEE  
PLATFILE 22 SHEET 23