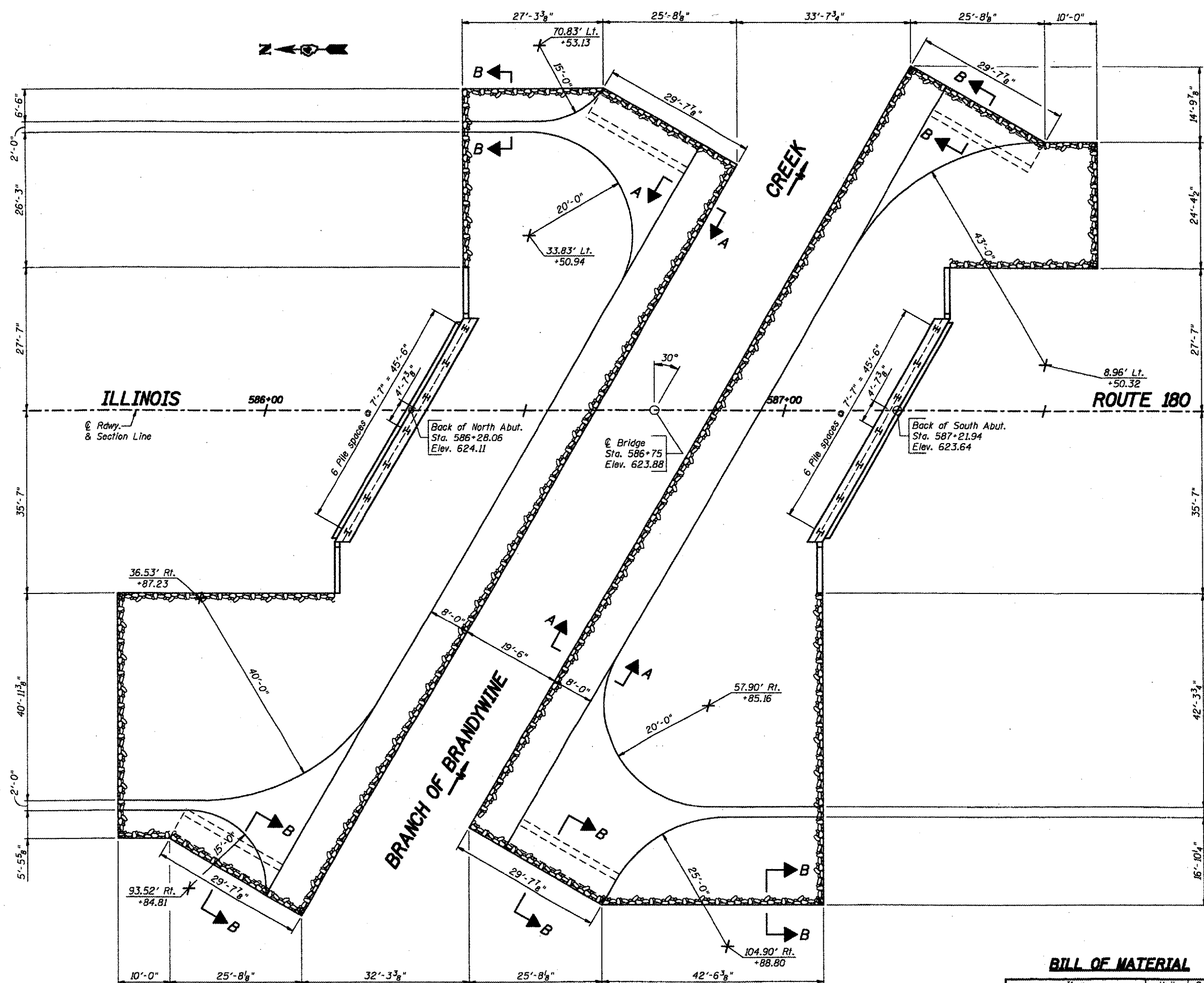
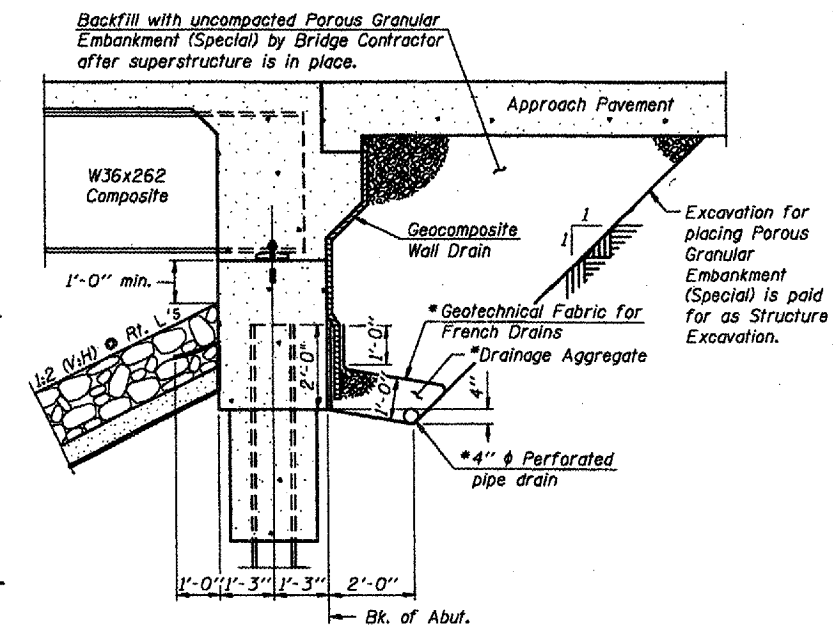


ROUTE NO.	DISTRICT	COUNTY	SHEET NO.	TOTAL SHEETS
FAS 1195	(112B) BR-3	KNOX	76	22
FED. ROAD DIST. NO. 7		ILLINOIS	FED. AID PROJECT	



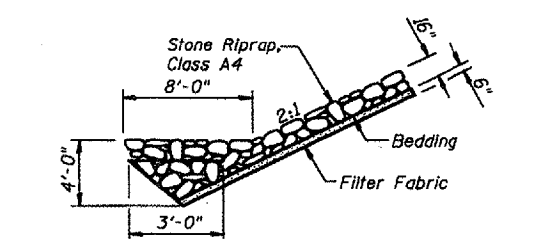
PLAN VIEW



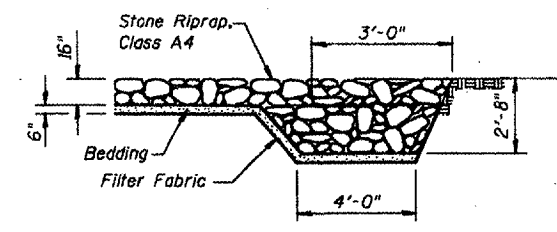
SECTION THRU INTEGRAL ABUTMENT  
(Horiz. dim. @ Rt. L's)

\* Included in the cost of Pipe Underdrains for Structures.

All drainage system components shall extend to 2'-0" from the end of each wingwall except an outlet pipe shall extend until intersecting with the side slopes. The pipes shall drain into concrete headwalls. (See Article 601.05 of the Standard Specifications and Highway Standard 601101)



SEC A-A



SEC B-B

STONE RIPRAP ANCHOR DETAILS

BILL OF MATERIAL

Item	Unit	Quantity
Stone Riprap, Class A4	Sq. Yd.	1,599
Filter Fabric	Sq. Yd.	1,599

RIPRAP AND PILE LAYOUT  
ILLINOIS ROUTE 180 OVER  
BRANCH OF BRANDYWINE CREEK  
F.A.S. ROUTE 1195 - SECTION (112B)BR-3  
KNOX COUNTY  
STA. 586+75 (S.N. 048-0089)  
WHA # 1189D06