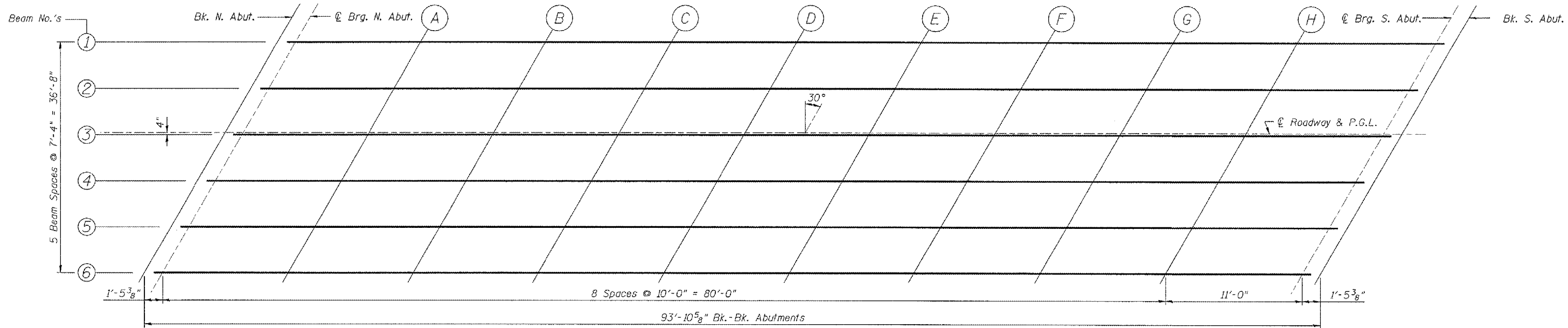
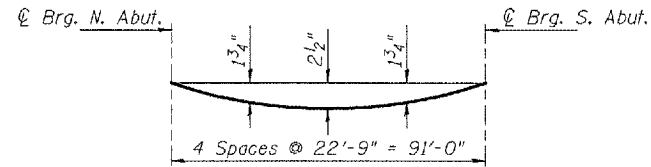


ROUTE NO.	SECTION	COUNTY	TOTAL SHEETS	SHEET NO.
FAS 1195	(112B) BR-3	KNOX	76	23
FED. ROAD DIST. NO. 7	ILLINOIS	FED. AID PROJECT		



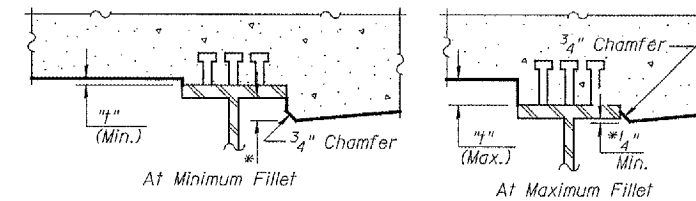
PLAN



DEAD LOAD DEFLECTION DIAGRAM

(Includes weight of concrete slab only)

Note: The above deflections are not to be used in the field if the Engineer is working from the grade elevations adjusted for dead load deflections, as shown below.



At Minimum Fillet

At Maximum Fillet

*Variable (not less than 1/4")

To determine "f": After all structural steel has been erected, elevations of the top flanges of the beams shall be taken at intervals shown above. These elevations subtracted from the "Theoretical Grade Elevations Adjusted For Dead Load Deflection" shown below, minus slab thickness, equals the fillet heights "f" above top flange of beams.

FILLET HEIGHTS

BEAM 1					BEAM 2					BEAM 3					@ ROADWAY & P.G.L.				
Location	Station	Offset Lt.	Theoretical Grade Elevations	Theoretical Grade Elevations Adjusted For Dead Load Deflection	Location	Station	Offset Lt.	Theoretical Grade Elevations	Theoretical Grade Elevations Adjusted For Dead Load Deflection	Location	Station	Offset Rt.	Theoretical Grade Elevations	Theoretical Grade Elevations Adjusted For Dead Load Deflection	Location	Station	Offset	Theoretical Grade Elevations	Theoretical Grade Elevations Adjusted For Dead Load Deflection
Bk. of N. Abut.	586+36.34	14.333	623.833	623.833	Bk. of N. Abut.	586+32.1	7.000	623.982	623.982	Bk. of N. Abut.	586+27.87	0.333	624.107	624.107	Bk. of N. Abut.	586+28.06	0.000	624.112	624.112
☉ Brg. N. Abut.	586+37.775	14.333	623.824	623.824	☉ Brg. N. Abut.	586+33.541	7.000	623.972	623.972	☉ Brg. N. Abut.	586+29.307	0.333	624.097	624.097	☉ Brg. N. Abut.	586+29.500	0.000	624.101	624.101
A	586+47.775	14.333	623.774	623.844	A	586+43.541	7.000	623.922	623.992	A	586+39.307	0.333	624.047	624.117	A	586+39.500	0.000	624.052	624.122
B	586+57.775	14.333	623.724	623.857	B	586+53.541	7.000	623.872	624.005	B	586+49.307	0.333	623.997	624.131	B	586+49.500	0.000	624.002	624.135
C	586+67.775	14.333	623.674	623.855	C	586+63.541	7.000	623.822	624.003	C	586+59.307	0.333	623.947	624.128	C	586+59.500	0.000	623.952	624.132
D	586+77.775	14.333	623.624	623.831	D	586+73.541	7.000	623.772	623.979	D	586+69.307	0.333	623.897	624.104	D	586+69.500	0.000	623.902	624.108
E	586+87.775	14.333	623.574	623.782	E	586+83.541	7.000	623.722	623.930	E	586+79.307	0.333	623.847	624.055	E	586+79.500	0.000	623.851	624.059
F	586+97.775	14.333	623.524	623.709	F	586+93.541	7.000	623.672	623.856	F	586+89.307	0.333	623.797	623.982	F	586+89.500	0.000	623.802	623.986
G	587+07.775	14.333	623.474	623.613	G	587+03.541	7.000	623.622	623.761	G	586+99.307	0.333	623.747	623.886	G	586+99.500	0.000	623.752	623.890
H	587+17.775	14.333	623.424	623.501	H	587+13.541	7.000	623.572	623.649	H	587+09.307	0.333	623.697	623.774	H	587+09.500	0.000	623.702	623.778
☉ Brg. S. Abut.	587+28.775	14.333	623.369	623.369	☉ Brg. S. Abut.	587+24.541	7.000	623.517	623.517	☉ Brg. S. Abut.	587+20.307	0.333	623.642	623.642	☉ Brg. S. Abut.	587+20.500	0.000	623.647	623.647
Bk. of S. Abut.	587+30.22	14.333	623.364	623.364	Bk. of S. Abut.	587+25.98	7.000	623.512	623.512	Bk. of S. Abut.	587+21.75	0.333	623.638	623.638	Bk. of S. Abut.	587+21.94	0.000	623.641	623.641

BEAM 4					BEAM 5					BEAM 6				
Location	Station	Offset Rt.	Theoretical Grade Elevations	Theoretical Grade Elevations Adjusted For Dead Load Deflection	Location	Station	Offset Rt.	Theoretical Grade Elevations	Theoretical Grade Elevations Adjusted For Dead Load Deflection	Location	Station	Offset Rt.	Theoretical Grade Elevations	Theoretical Grade Elevations Adjusted For Dead Load Deflection
Bk. of N. Abut.	586+23.63	7.666	624.013	624.013	Bk. of N. Abut.	586+19.4	15.000	623.904	623.904	Bk. of N. Abut.	586+15.17	22.333	623.772	623.772
☉ Brg. N. Abut.	586+25.073	7.666	624.004	624.004	☉ Brg. N. Abut.	586+20.839	15.000	623.895	623.895	☉ Brg. N. Abut.	586+16.605	22.333	623.763	623.763
A	586+35.073	7.666	623.954	624.024	A	586+30.839	15.000	623.845	623.915	A	586+26.605	22.333	623.713	623.783
B	586+45.073	7.666	623.904	624.037	B	586+40.839	15.000	623.795	623.928	B	586+36.605	22.333	623.663	623.797
C	586+55.073	7.666	623.854	624.035	C	586+50.839	15.000	623.745	623.926	C	586+46.605	22.333	623.613	623.794
D	586+65.073	7.666	623.804	624.011	D	586+60.839	15.000	623.695	623.902	D	586+56.605	22.333	623.563	623.770
E	586+75.073	7.666	623.754	623.962	E	586+70.839	15.000	623.645	623.853	E	586+66.605	22.333	623.513	623.721
F	586+85.073	7.666	623.704	623.888	F	586+80.839	15.000	623.595	623.779	F	586+76.605	22.333	623.463	623.648
G	586+95.073	7.666	623.654	623.793	G	586+90.839	15.000	623.545	623.684	G	586+86.605	22.333	623.413	623.552
H	587+05.073	7.666	623.604	623.681	H	587+00.839	15.000	623.495	623.572	H	586+96.605	22.333	623.363	623.440
☉ Brg. S. Abut.	587+16.073	7.666	623.549	623.549	☉ Brg. S. Abut.	587+11.839	15.000	623.44	623.440	☉ Brg. S. Abut.	587+07.605	22.333	623.308	623.308
Bk. of S. Abut.	587+17.51	7.666	623.543	623.543	Bk. of S. Abut.	587+13.28	15.000	623.435	623.435	Bk. of S. Abut.	587+09.05	22.333	623.303	623.303

TOP OF SLAB ELEVATIONS
ILLINOIS ROUTE 180 OVER
BRANCH OF BRANDYWINE CREEK
F.A.S. ROUTE 1195 - SECTION (112B)BR-3
KNOX COUNTY
STA. 586+75 (S.N. 048-0089)
WHA # 1189D06