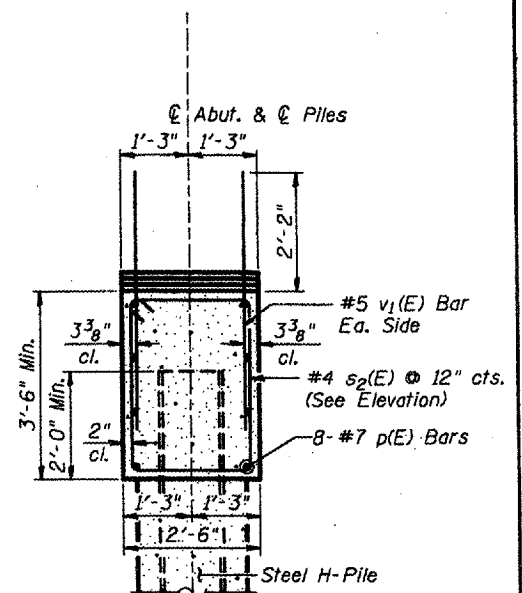
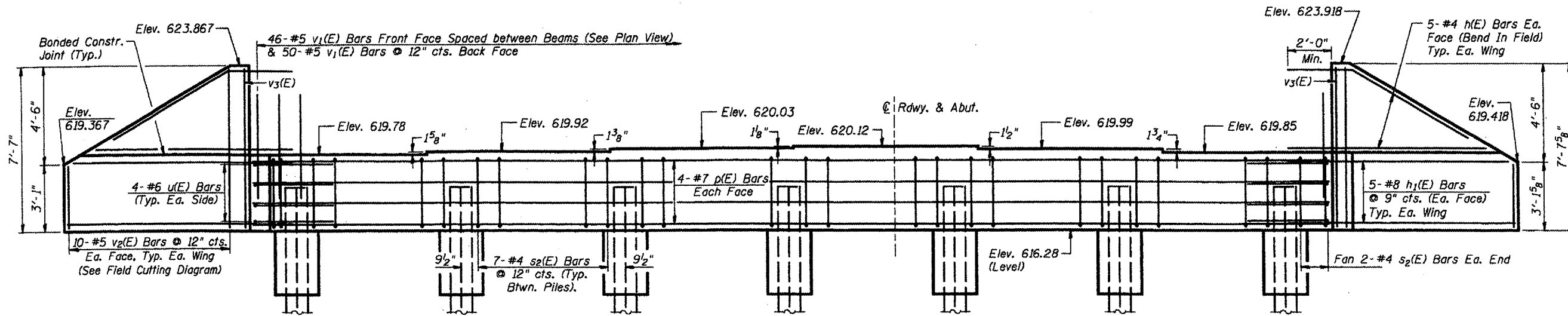


ROUTE NO.	SECTION	COUNTY	TOTAL SHEETS	SHEET NO.
FAS 1195	(112B) BR-3	KNOX	76	28
FED. ROAD DIST. NO. 7	ILLINOIS	FED. AID PROJECT		

STRUCTURAL SHEET 8 OF 12



PILE DATA

Type..... Steel H12x53
 Nominal Required Bearing..... 418 kips
 Allowable Resistance Available..... 139 kips
 Est. Length..... 46'
 No. Production Piles..... 6
 No. Test Piles..... 1

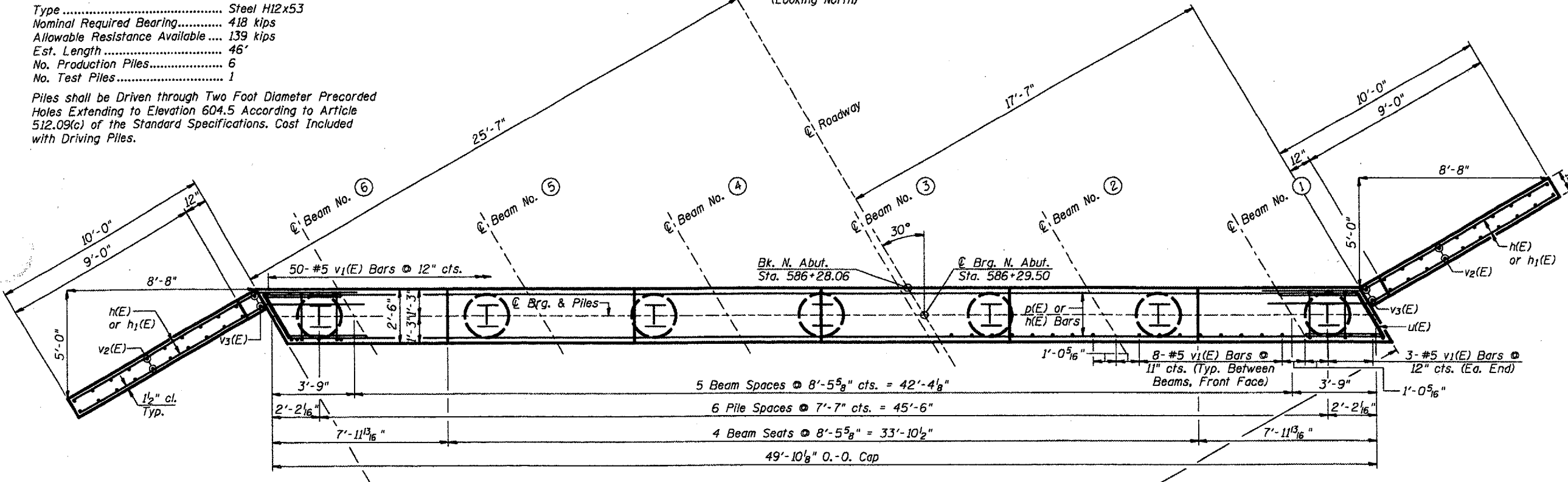
Piles shall be Driven through Two Foot Diameter Precored Holes Extending to Elevation 604.5 According to Article 512.09(c) of the Standard Specifications. Cost Included with Driving Piles.

ELEVATION VIEW
(Looking North)

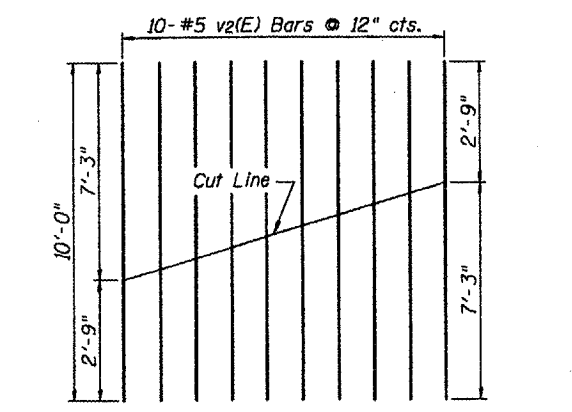
SECTION THRU ABUT.
(At Rt. L's)

BILL OF MATERIAL-N. ABUT.

Bar	No.	Size	Length	Shape	
h(E)	20	#4	11'-0"	—	
h1(E)	20	#8	14'-4"	—	
p(E)	8	#7	49'-6"	—	
s2(E)	46	#4	11'-5"	□	
u(E)	8	#6	9'-4"	⊥	
v1(E)	96	#5	4'-11"	—	
v2(E)	20	#5	10'-0"	—	
v3(E)	4	#4	8'-3"	—	
Structure Excavation				Cu. Yd.	53
Concrete Encasement				Cu. Yd.	2.5
Concrete Structures				Cu. Yd.	20.9
Reinforcement Bars, Epoxy Coated				Pound	2,910
Furnishing Steel Piles, HPI2x53				Foot	276
Driving Piles				Foot	276
Test Pile, Steel HPI2x53				Each	1

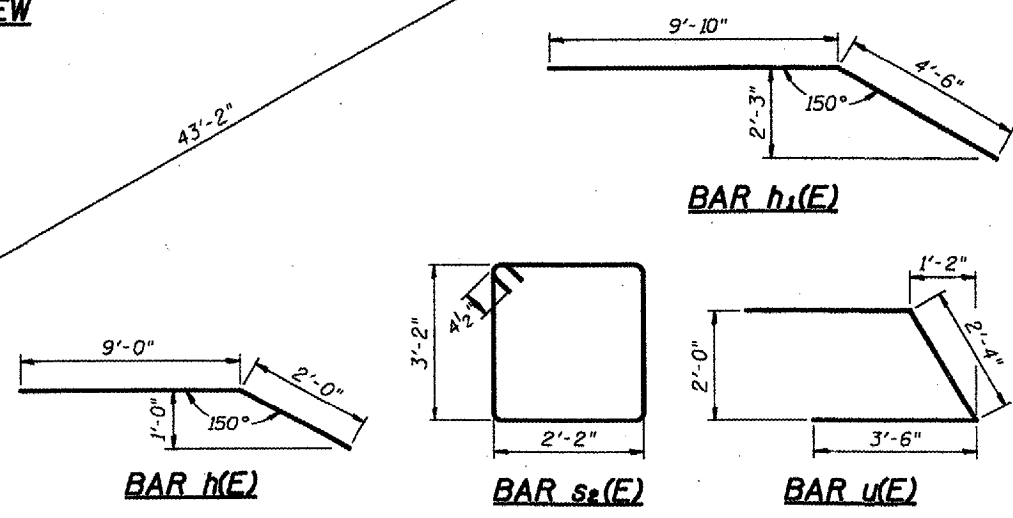


PLAN VIEW



FIELD CUTTING DIAGRAM v2(E) BARS

Order v2(E) Bars Full Length. Cut As Shown And Use Remainder In Opposite Face.



NOTES:

All Exposed Edges Shall Have Standard 3/4" Chamfers, Except As Noted.
 Space Reinforcement In Cap To Miss Dowel Rods.
 Pour Steps Monolithically With Cap.
 Reinforcement Bars Designated (E) Shall Be Epoxy Coated.
 For Pile Encasement Details See Sheet 11 of 12.

NORTH ABUTMENT
ILLINOIS ROUTE 180 OVER
BRANCH OF BRANDYWINE CREEK
F.A.S. ROUTE 1195 - SECTION (112B)BR-3
KNOX COUNTY
STA. 586+75 (S.N. 048-0089)
 WHA # 1189D06