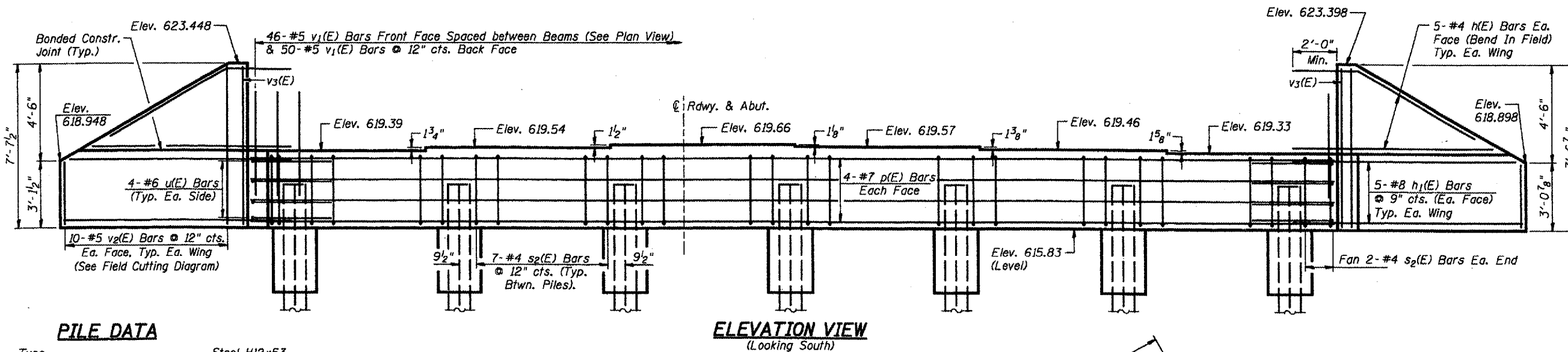
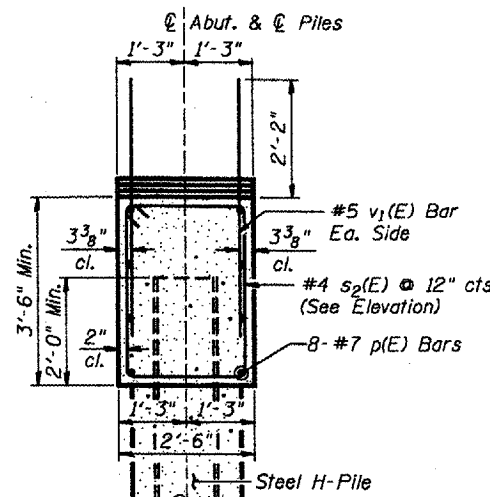


ROUTE NO.	SECTION	COUNTY	SHEET	SHEET
FAS 1195	(112B) BR-3	KNOX	76	29
FED. ROAD DIST. NO. 7	ILLINOIS	FED. AID PROJECT		

STRUCTURAL SHEET 9 OF 12



ELEVATION VIEW
(Looking South)



SECTION THRU ABUT.
(@ Rt. L's)

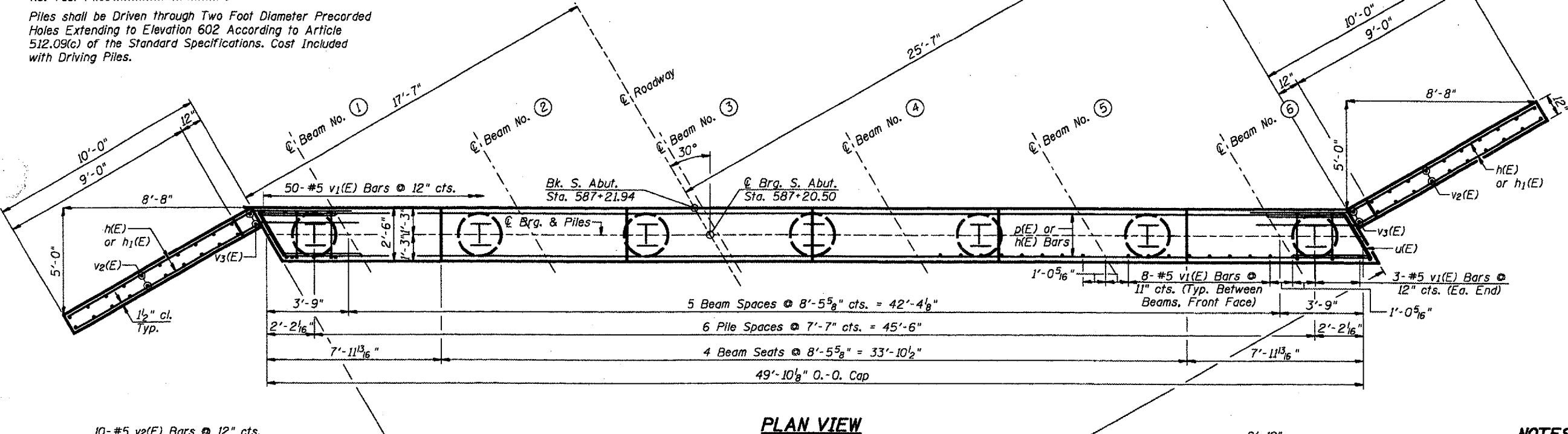
PILE DATA

Type Steel H12x53
 Nominal Required Bearing 418 kips
 Allowable Resistance Available 139 kips
 Est. Length 43'
 No. Production Piles 6
 No. Test Piles 1

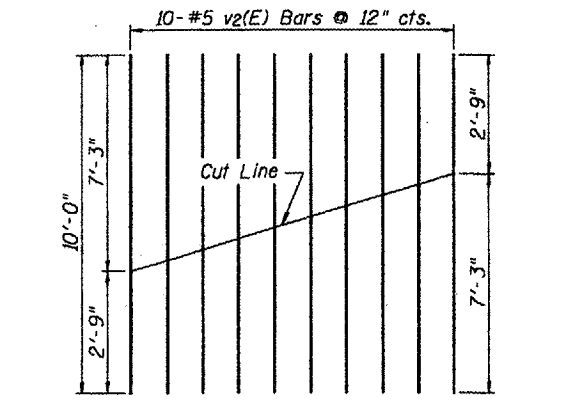
Piles shall be Driven through Two Foot Diameter Precored Holes Extending to Elevation 602 According to Article 512.09(c) of the Standard Specifications. Cost Included with Driving Piles.

BILL OF MATERIAL - S. ABUT.

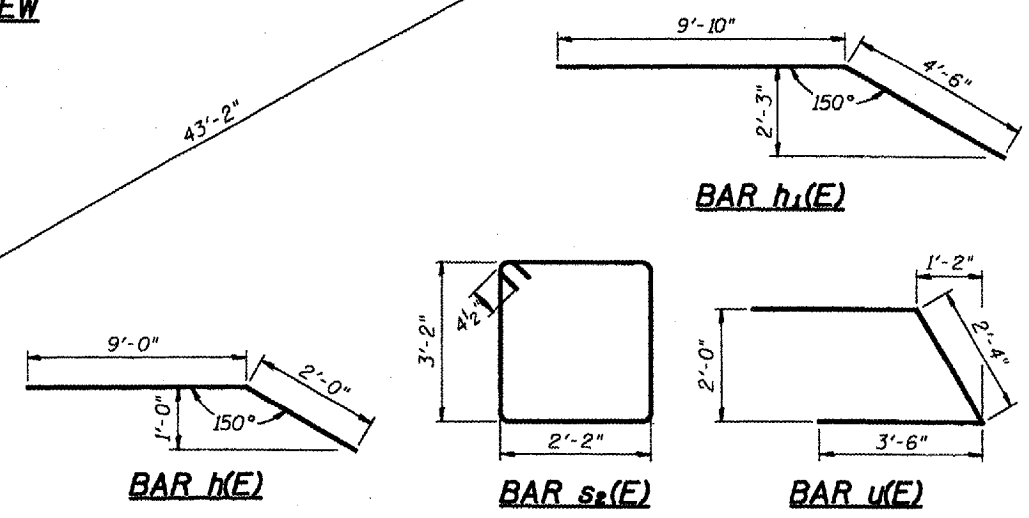
Bar	No.	Size	Length	Shape
h(E)	20	#4	11'-0"	—
h1(E)	20	#8	14'-4"	—
p(E)	8	#7	49'-6"	—
s2(E)	46	#4	11'-5"	□
u(E)	8	#6	9'-4"	—
v1(E)	96	#5	4'-11"	—
v2(E)	20	#5	10'-0"	—
v3(E)	4	#4	8'-3"	—
Structure Excavation				Cu. Yd. 61
Concrete Encasement				Cu. Yd. 2.5
Concrete Structures				Cu. Yd. 20.9
Reinforcement Bars, Epoxy Coated				Pound 2,910
Furnishing Steel Piles, HP12x53				Foot 258
Driving Piles				Foot 258
Test Pile, Steel HP12x53				Each 1



PLAN VIEW



FIELD CUTTING DIAGRAM v2(E) BARS
 Order v2(E) Bars Full Length. Cut As Shown And Use Remainder In Opposite Face



NOTES:

- All Exposed Edges Shall Have Standard 3/4" Chamfers. Except As Noted.
- Space Reinforcement In Cap To Miss Dowel Rods.
- Pour Steps Monolithically With Cap.
- Reinforcement Bars Designated (E) Shall Be Epoxy Coated.
- For Pile Encasement Details See Sheet 11 of 12.

SOUTH ABUTMENT
ILLINOIS ROUTE 180 OVER
BRANCH OF BRANDYWINE CREEK
F.A.S. ROUTE 1195 - SECTION (112B)BR-3
KNOX COUNTY
STA. 586+75 (S.N. 048-0089)
 WHA # 1189D06