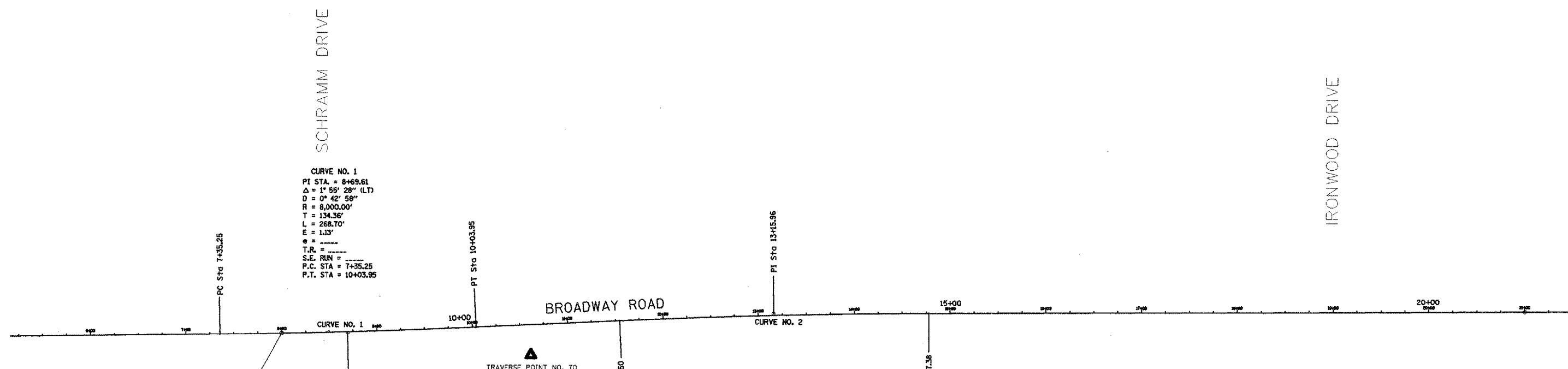


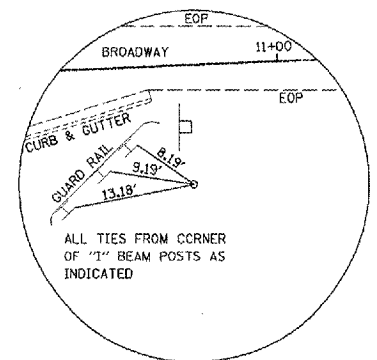
CONTRACT NO. 89347			
F.A.U. RTE.	SECTION	COUNTY	TOTAL SHEETS
6761	04-00057-06-WR	TAZEWELL	154
SHEET NO.		22	
STA.		TO STA.	
FED. ROAD DIST. NO. 4		ILLINOIS FED. AID PROJECT	



CURVE NO. 1
 PI STA = 8+69.61
 $\Delta = 1^\circ 55' 28''$ (LT)
 $D = 0^\circ 42' 58''$
 $R = 8,000.00'$
 $T = 134.36'$
 $L = 288.70'$
 $E = 1.13'$
 $\theta = \dots$
 T.R. = \dots
 S.E. RUN = \dots
 P.C. STA = 7+35.25
 P.T. STA = 10+03.95

CURVE NO. 2
 PI STA = 13+15.96
 $\Delta = 2^\circ 18' 45''$ (RT)
 $D = 0^\circ 42' 58''$
 $R = 8,000.00'$
 $T = 161.46'$
 $L = 322.88'$
 $E = 1.63'$
 $\theta = \dots$
 T.R. = \dots
 S.E. RUN = \dots
 P.C. STA = 11+54.50
 P.T. STA = 14+77.38

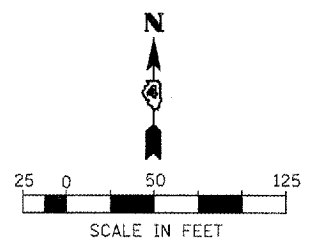
BEGIN IMPROVEMENTS
 STA. 8+00



ALL TIES FROM CORNER OF "I" BEAM POSTS AS INDICATED

TRAVERSE POINT NO. 70
 1/2" IRON ROD W/CAP
 STA. 10+60.42, 31.88' RT.
 N. = 1421218.22
 E. = 2452675.10
 BENCHMARK ELEV. = 622.47

ALIGNMENT COORDINATE TABLE			
DESCRIPTION	STATION	NORTHING	EASTING
P.O.L. STA. 6+00	6+00.00	1421239.47	2452212.80
P.I. CURVE NO. 1	8+69.61	1421242.77	2452482.39
P.I. CURVE NO. 2	13+15.96	142263.23	2452928.30
P.O.L. STA. 21+00	21+00.00	142266.07	2453712.98



REVISIONS	
NAME	DATE

ILLINOIS DEPARTMENT OF TRANSPORTATION
**BROADWAY ROAD IMPROVEMENTS
 ALIGNMENT TIES, BENCHMARKS
 AND LINE DIAGRAM**

SCALE: _____ DRAWN BY: DLC
 DATE: 12/07/2007 CHECKED BY: REW

PLOT DATE = 2/8/2008
 FILE NAME = I:\2006\86679\align\ties_and_bms.dgn
 PLOT SCALE = 60.0000 X 1 IN.
 USER NAME = JDDT