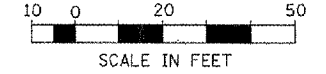
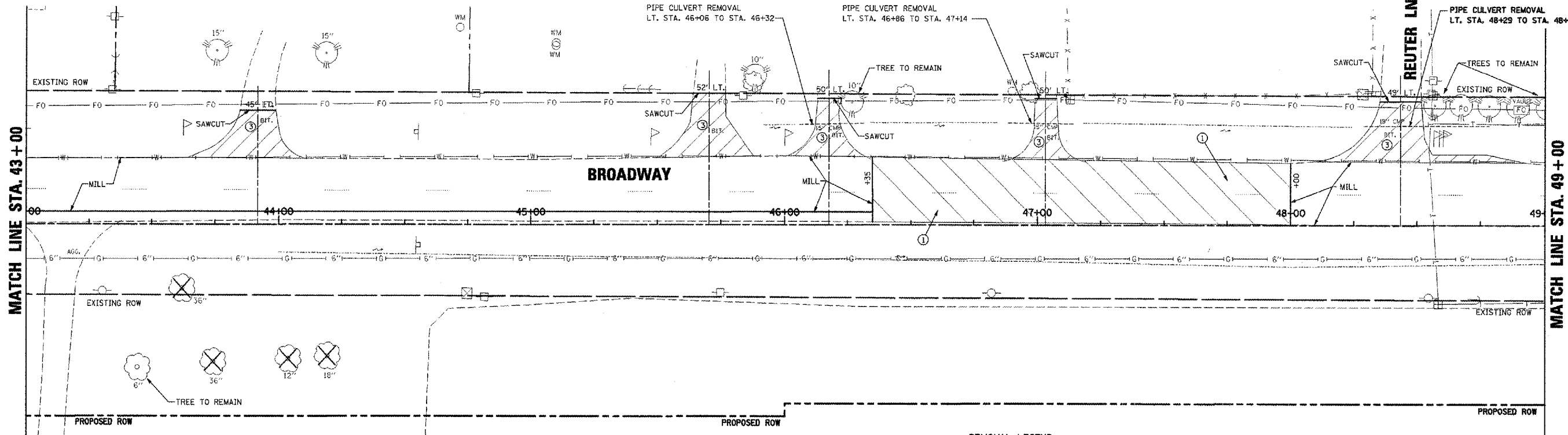
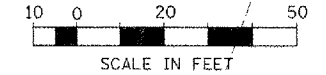
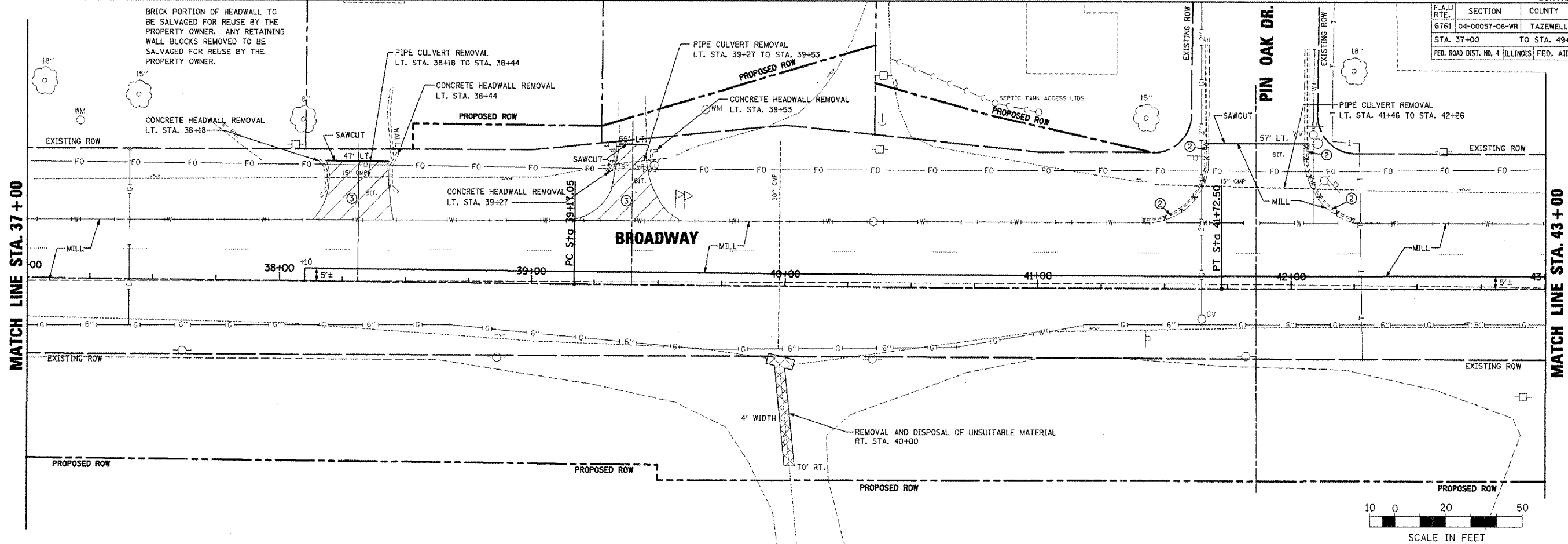


F.A.U. RTE.	SECTION	COUNTY	TOTAL SHEETS	SHEET NO.
6761	04-00057-06-WR	TAZEWELL	154	28
STA. 37+00		TO STA. 49+00		
FED. ROAD DIST. NO. 4 ILLINOIS FED. AID PROJECT				

PLAN	DATE
DESIGNED BY	
CHECKED BY	
DATE	

PROFILE	DATE
DESIGNED BY	
CHECKED BY	
DATE	



REMOVAL LEGEND

	① PAVEMENT REMOVAL
	② CCC&G REMOVAL
	③ DRIVEWAY PAVEMENT REMOVAL

NOTE: SAWCUT EDGE OF PAVEMENT FOR CURB REMOVAL (TYPICAL ALL LOCATIONS)

NOTE: SEE STATUS OF UTILITIES TO BE ADJUSTED FOR FURTHER INFORMATION ON UTILITY CONFLICTS.

BROADWAY - REMOVAL PLANS - STA. 37+00 TO STA. 49+00