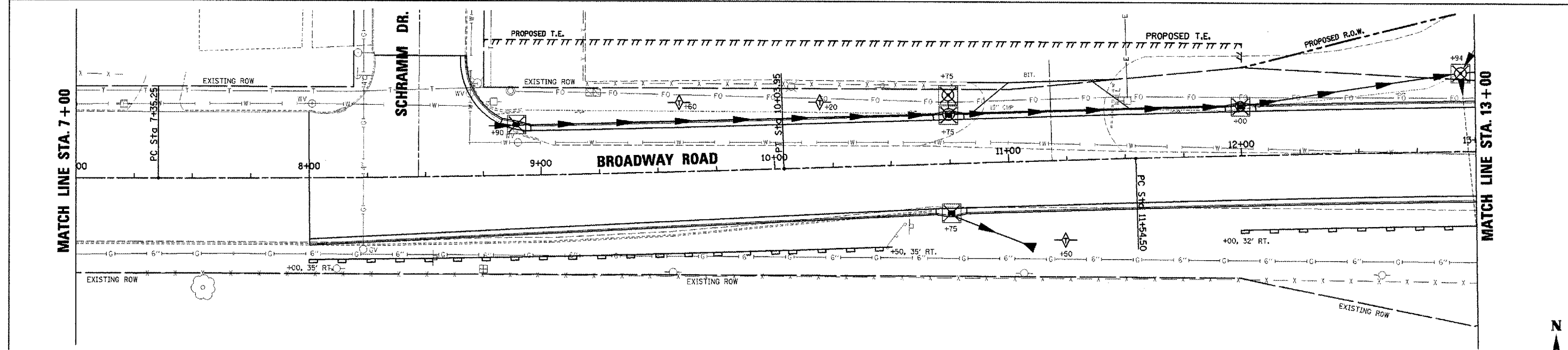
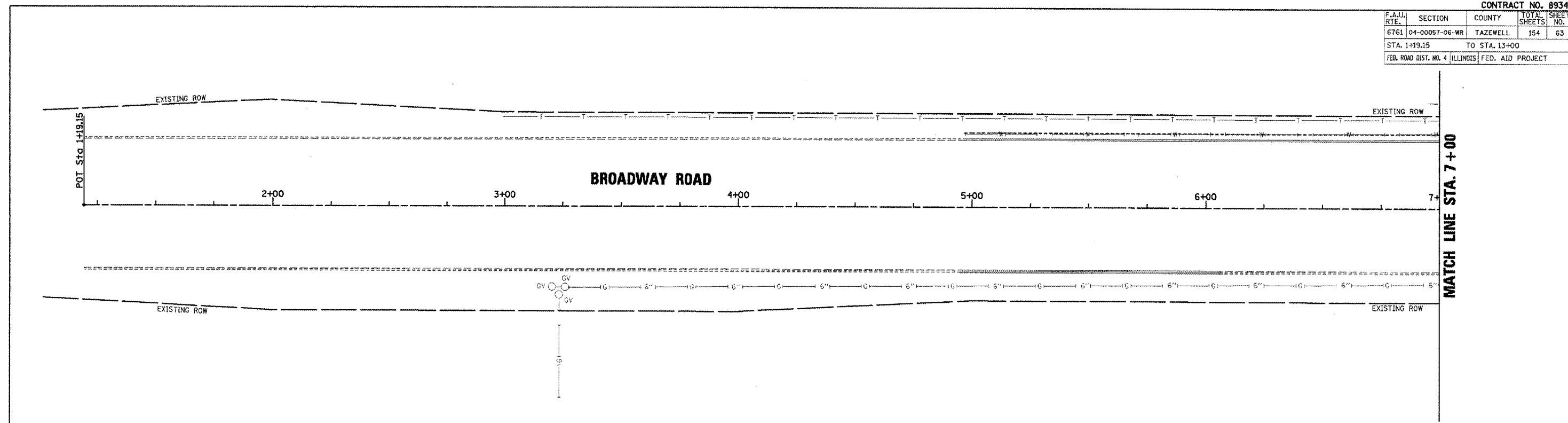


CONTRACT NO. 89347				
F.A.U. RTE.	SECTION	COUNTY	TOTAL SHEETS	SHEET NO.
6761	04-00057-06-WR	TAZEWELL	154	63
STA. 1+19.15		TO STA. 13+00		
FED. ROAD DIST. NO. 4 ILLINOIS FED. AID PROJECT				



- TEMPORARY EROSION CONTROL LEGEND**
- TEMPORARY DITCH CHECK
 - INLET AND PIPE PROTECTION
 - EROSION CONTROL BLANKET
 - HD HEAVY DUTY EROSION CONTROL BLANKET
 - PERIMETER EROSION BARRIER
 - AGGREGATE DITCH (TO BE PLACED UPON COMPLETION OF DITCH CUT) (SEE DRAINAGE PLANS FOR MORE INFO)
 - STONE DUMPED RIPRAP (TO BE PLACED UPON COMPLETION OF DITCH CUT) (SEE DRAINAGE PLANS FOR MORE INFO)

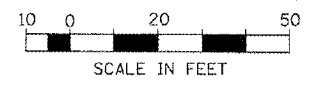
	PERMANENT SEEDING		
	SEEDING CLASS 1A	SEEDING CLASS 2A	SEEDING CLASS 5A
	ACRE	ACRE	ACRE
RT. STA. 8+00 TO STA. 13+00	-	0.14	-
LT. STA. 8+70 TO STA. 13+00	0.14	-	-

REVISIONS	
NAME	DATE

ILLINOIS DEPARTMENT OF TRANSPORTATION
BROADWAY ROAD IMPROVEMENTS
EROSION CONTROL
STA. 1 + 19.15 TO STA. 13 + 00

SCALE: AS SHOWN
DATE 12/07/2007

DRAWN BY: DLC
CHECKED BY: REW



PLOT DATE = 2/19/2008
FILE NAME = I:\2008\6667\6667.dgn
PLOT SCALE = 30.0000 FT / IN.
USER NAME = DLG