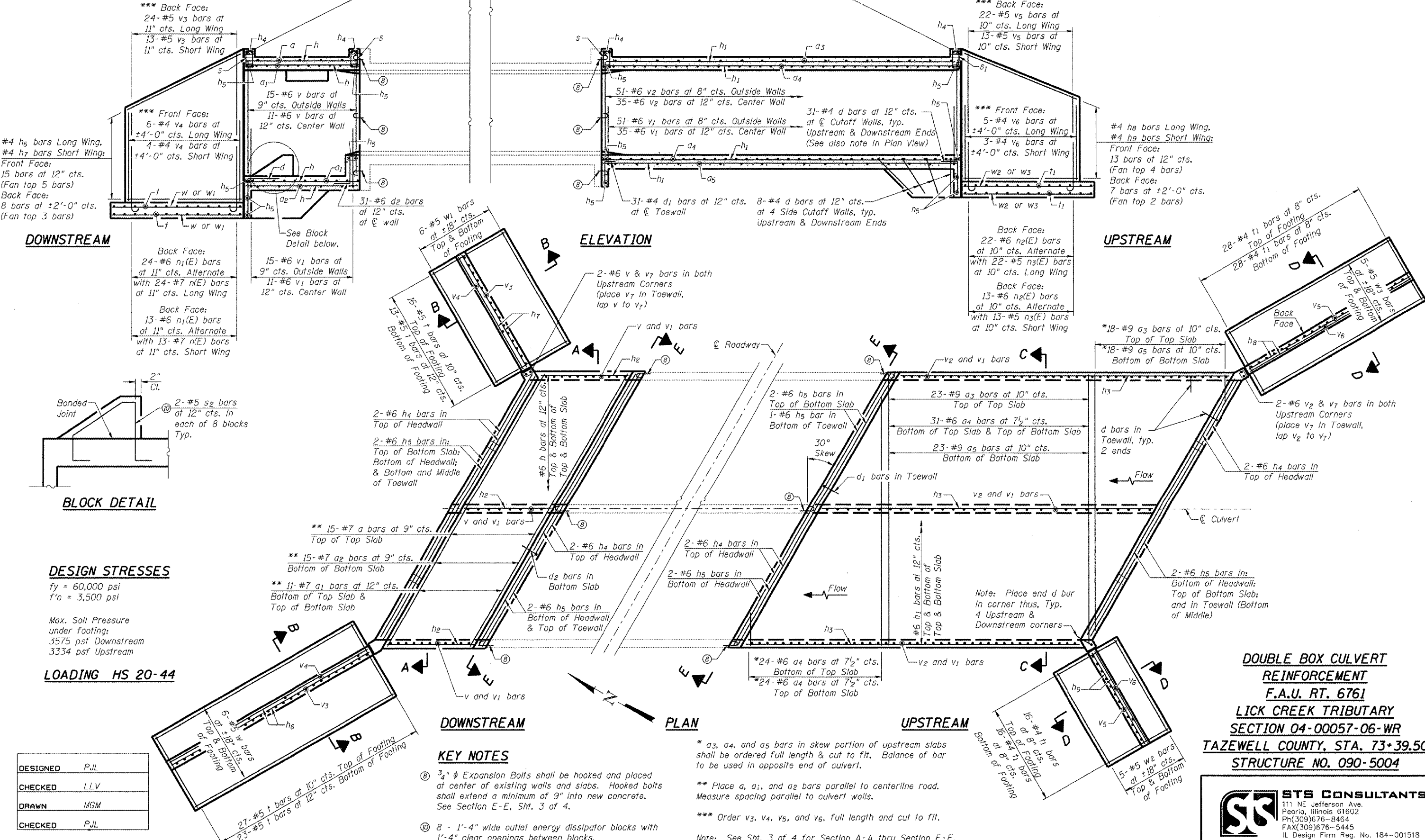


STATE OF ILLINOIS  
DEPARTMENT OF TRANSPORTATION

ROUTE NO. F.A.U. 6761	SECTION *	COUNTY Tazewell	STATES 154	MILE 94	SHEET NO. 2 4 SHEETS
FED. ROAD DIST. NO. 7		ILLINOIS	FED. AID PROJECT		

\*Section 04-00057-06-WR



\*\*\* Back Face:  
24-#5 v<sub>3</sub> bars at 11" cts. Long Wing  
13-#5 v<sub>3</sub> bars at 11" cts. Short Wing

\*\*\* Front Face:  
6-#4 v<sub>4</sub> bars at ±4'-0" cts. Long Wing  
4-#4 v<sub>4</sub> bars at ±4'-0" cts. Short Wing

#4 h<sub>6</sub> bars Long Wing,  
#4 h<sub>7</sub> bars Short Wing;  
Front Face:  
15 bars at 12" cts.  
(Fan top 5 bars)  
Back Face:  
8 bars at ±2'-0" cts.  
(Fan top 3 bars)

Back Face:  
24-#6 n<sub>1</sub>(E) bars at 11" cts. Alternate with 24-#7 n(E) bars at 11" cts. Long Wing  
Back Face:  
13-#6 n<sub>1</sub>(E) bars at 11" cts. Alternate with 13-#7 n(E) bars at 11" cts. Short Wing

15-#6 v<sub>1</sub> bars at 9" cts. Outside Walls  
11-#6 v<sub>1</sub> bars at 12" cts. Center Wall

51-#6 v<sub>2</sub> bars at 8" cts. Outside Walls  
35-#6 v<sub>2</sub> bars at 12" cts. Center Wall  
51-#6 v<sub>1</sub> bars at 8" cts. Outside Walls  
35-#6 v<sub>1</sub> bars at 12" cts. Center Wall

31-#4 d bars at 12" cts. at Cutoff Walls, typ. Upstream & Downstream Ends (See also note in Plan View)

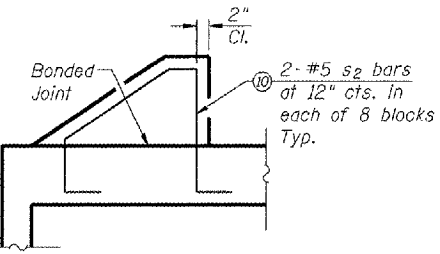
\*\*\* Back Face:  
22-#5 v<sub>5</sub> bars at 10" cts. Long Wing  
13-#5 v<sub>5</sub> bars at 10" cts. Short Wing

\*\*\* Front Face:  
5-#4 v<sub>6</sub> bars at ±4'-0" cts. Long Wing  
3-#4 v<sub>6</sub> bars at ±4'-0" cts. Short Wing

#4 h<sub>8</sub> bars Long Wing,  
#4 h<sub>9</sub> bars Short Wing;  
Front Face:  
13 bars at 12" cts. (Fan top 4 bars)  
Back Face:  
7 bars at ±2'-0" cts. (Fan top 2 bars)

Back Face:  
22-#6 n<sub>2</sub>(E) bars at 10" cts. Alternate with 22-#5 n<sub>3</sub>(E) bars at 10" cts. Long Wing  
Back Face:  
13-#6 n<sub>2</sub>(E) bars at 10" cts. Alternate with 13-#5 n<sub>3</sub>(E) bars at 10" cts. Short Wing

\*18-#9 a<sub>3</sub> bars at 10" cts. Top of Top Slab  
\*18-#9 a<sub>5</sub> bars at 10" cts. Bottom of Bottom Slab



**DESIGN STRESSES**

f<sub>y</sub> = 60,000 psi  
f'c = 3,500 psi

Max. Soil Pressure under Footing:  
3575 psf Downstream  
3334 psf Upstream

**LOADING HS 20-44**

DESIGNED	PJL
CHECKED	LLV
DRAWN	MGM
CHECKED	PJL

**KEY NOTES**

- ③ 3/4" Expansion Bolts shall be hooked and placed at center of existing walls and slabs. Hooked bolts shall extend a minimum of 9" into new concrete. See Section E-E, Sht. 3 of 4.
- ④ 8 - 1'-4" wide outlet energy dissipator blocks with 1'-4" clear openings between blocks.

\* a<sub>3</sub>, a<sub>4</sub>, and a<sub>5</sub> bars in skew portion of upstream slabs shall be ordered full length & cut to fit. Balance of bar to be used in opposite end of culvert.

\*\* Place a<sub>1</sub>, a<sub>2</sub>, and a<sub>3</sub> bars parallel to centerline road. Measure spacing parallel to culvert walls.

\*\*\* Order v<sub>3</sub>, v<sub>4</sub>, v<sub>5</sub>, and v<sub>6</sub>, full length and cut to fit.

Note: See Sht. 3 of 4 for Section A-A thru Section E-E.