

SW 1/4, SECTION 17, T12N, R5E, 4th P.M.

ROUTE	SECTION	COUNTY	TOTAL SHEETS	SHEET NO.
C.H. 7	03-00147 -01-BR	STARK	25	3
STA. 145+00	TO STA. 161+50			
FED. ROAD DIST. NO.	ILLINOIS	FED. AID PROJECT	CONTRACT NO. 69452	

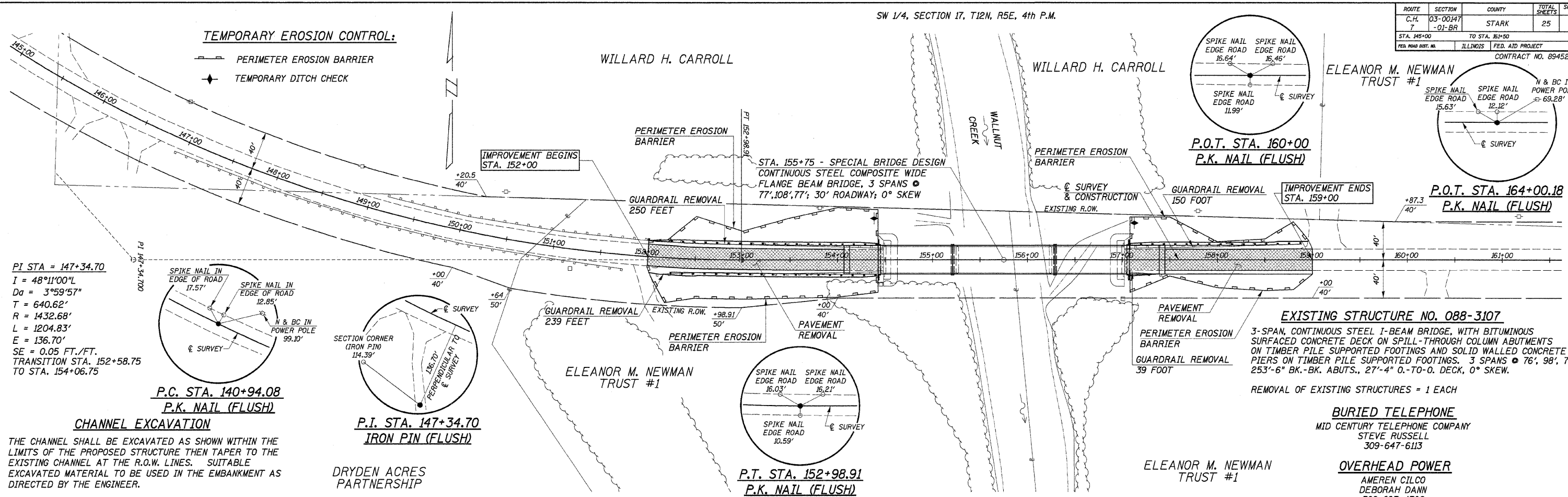
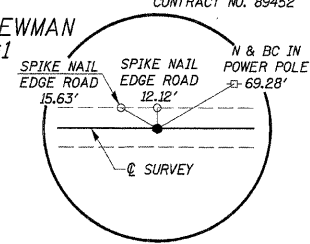
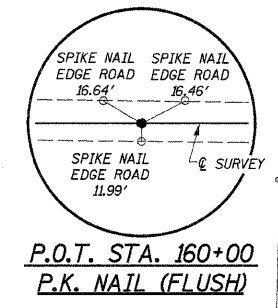
TEMPORARY EROSION CONTROL:

- PERIMETER EROSION BARRIER
- ◆ TEMPORARY DITCH CHECK

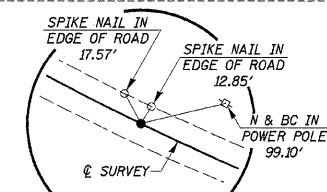
WILLARD H. CARROLL

WILLARD H. CARROLL

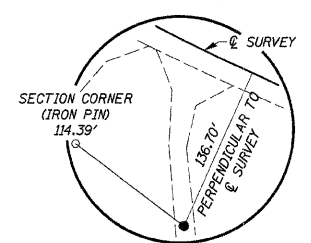
ELEANOR M. NEWMAN TRUST #1



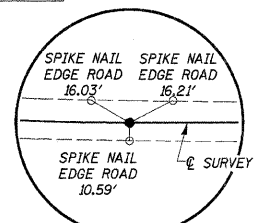
PI STA = 147+34.70
 $I = 48^{\circ}11'00''L$
 $Da = 3^{\circ}59'57''$
 $T = 640.62'$
 $R = 1432.68'$
 $L = 1204.83'$
 $E = 136.70'$
 $SE = 0.05 \text{ FT./FT.}$
 TRANSITION STA. 152+58.75
 TO STA. 154+06.75



P.C. STA. 140+94.08
P.K. NAIL (FLUSH)



P.I. STA. 147+34.70
IRON PIN (FLUSH)



P.T. STA. 152+98.91
P.K. NAIL (FLUSH)

EXISTING STRUCTURE NO. 088-3107
 3-SPAN, CONTINUOUS STEEL I-BEAM BRIDGE, WITH BITUMINOUS SURFACED CONCRETE DECK ON SPILL-THROUGH COLUMN ABUTMENTS ON TIMBER PILE SUPPORTED FOOTINGS AND SOLID WALLED CONCRETE PIERS ON TIMBER PILE SUPPORTED FOOTINGS. 3 SPANS @ 76', 98', 76' 253'-6" BK.-BK. ABUTS., 27'-4" O.-TO-O. DECK, 0° SKEW.
 REMOVAL OF EXISTING STRUCTURES = 1 EACH

BURIED TELEPHONE
 MID CENTURY TELEPHONE COMPANY
 STEVE RUSSELL
 309-647-6113

OVERHEAD POWER
 AMEREN CILCO
 DEBORAH DANN
 309-693-4762

NW 1/4, SECTION 20, T12N, R5E, 4th P.M.

CHANNEL EXCAVATION

THE CHANNEL SHALL BE EXCAVATED AS SHOWN WITHIN THE LIMITS OF THE PROPOSED STRUCTURE THEN TAPER TO THE EXISTING CHANNEL AT THE R.O.W. LINES. SUITABLE EXCAVATED MATERIAL TO BE USED IN THE EMBANKMENT AS DIRECTED BY THE ENGINEER.

DRYDEN ACRES PARTNERSHIP

CHANNEL EXCAVATION = 500 CU. YD.

B.M. #1 - SPIKE NAIL IN POWER POLE
 40' LT. STA. 146+80
 EL. 642.84

B.M. #2 - SPIKE NAIL IN POWER POLE
 50' LT. STA. 150+40
 EL. 639.97

B.M. #3 - CHISELED "□" ON N.W. COR. WING
 EL. 644.00

B.M. #4 - CHISELED "□" ON N.E. COR. WING
 EL. 643.96

B.M. #5 - SPIKE NAIL IN POWER POLE
 45' LT. STA. 161+18
 EL. 641.37

EARTH EXCAVATION = 72 CU. YD.
 SUITABLE CHANNEL EXCAVATION = 250 CU. YD.
 FURNISHED EXCAVATION = 942 CU. YD.
 EMBANKMENT = 1,184 CU. YD. (FOR INFORMATION ONLY)

