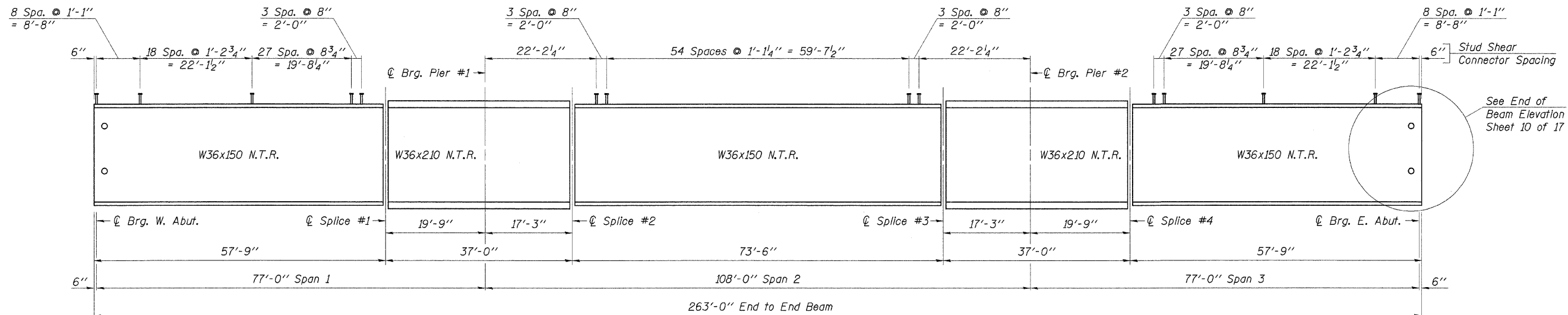


**FRAMING PLAN**

Note: N.T.R. Indicates that Notch Toughness Requirements are applicable.



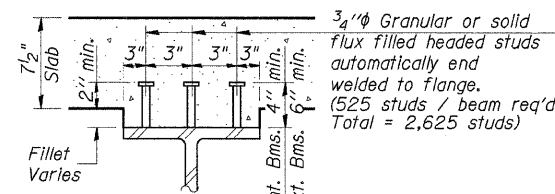
**ELEVATION**

Note: See Sheet 10 of 17 for Splice Details.

Load carrying components designated "N.T.R." shall conform to the Supplemental Requirements for Notch Toughness, Zone 2.

All diaphragms shall be installed as steel is erected and secured with erection pins and bolts except as otherwise noted. Individual diaphragms at supports may be temporarily disconnected to install bearing anchor rods.

Work this Sheet with Sheets 10 & 11 of 17.



**SECTION A-A**

Typical Shear Connector Detail

**TOP OF BEAM ELEVATIONS**  
(For fabrication only)

	Beam 1 or 5	Beam 2 or 4	Beam 3
☉ Brg. W. Abut.	643.93	644.15	644.25
☉ Splice 1	643.93	644.15	644.25
☉ Brg. Pier 1	643.95	644.17	644.27
☉ Splice 2	643.96	644.18	644.28
☉ Splice 3	643.96	644.18	644.28
☉ Brg. Pier 2	643.95	644.17	644.27
☉ Splice 4	643.93	644.15	644.25
☉ Brg. E. Abut.	643.93	644.15	644.25

DESIGNED	A.R.K.
CHECKED	F.J.S. & S.F.M.
DRAWN	S.A.P.
CHECKED	A.R.K. & F.J.S.

**STRUCTURAL STEEL**  
SECTION 03-00147-01-BR  
COUNTY HIGHWAY 7  
STARK COUNTY  
STATION 155+75