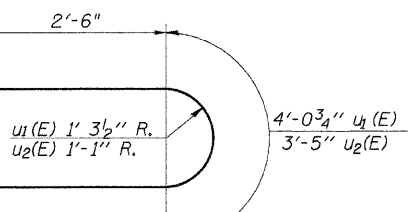


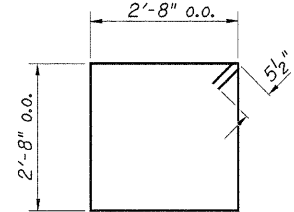
PLAN

MIN. BAR LAPS
 #5 1'-4"
 #6 1'-7"

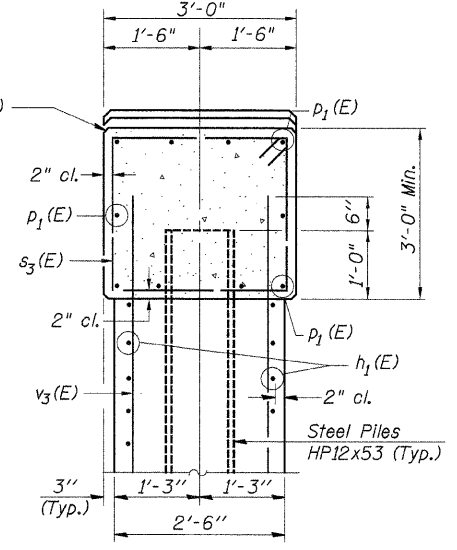
BAR s4(E)



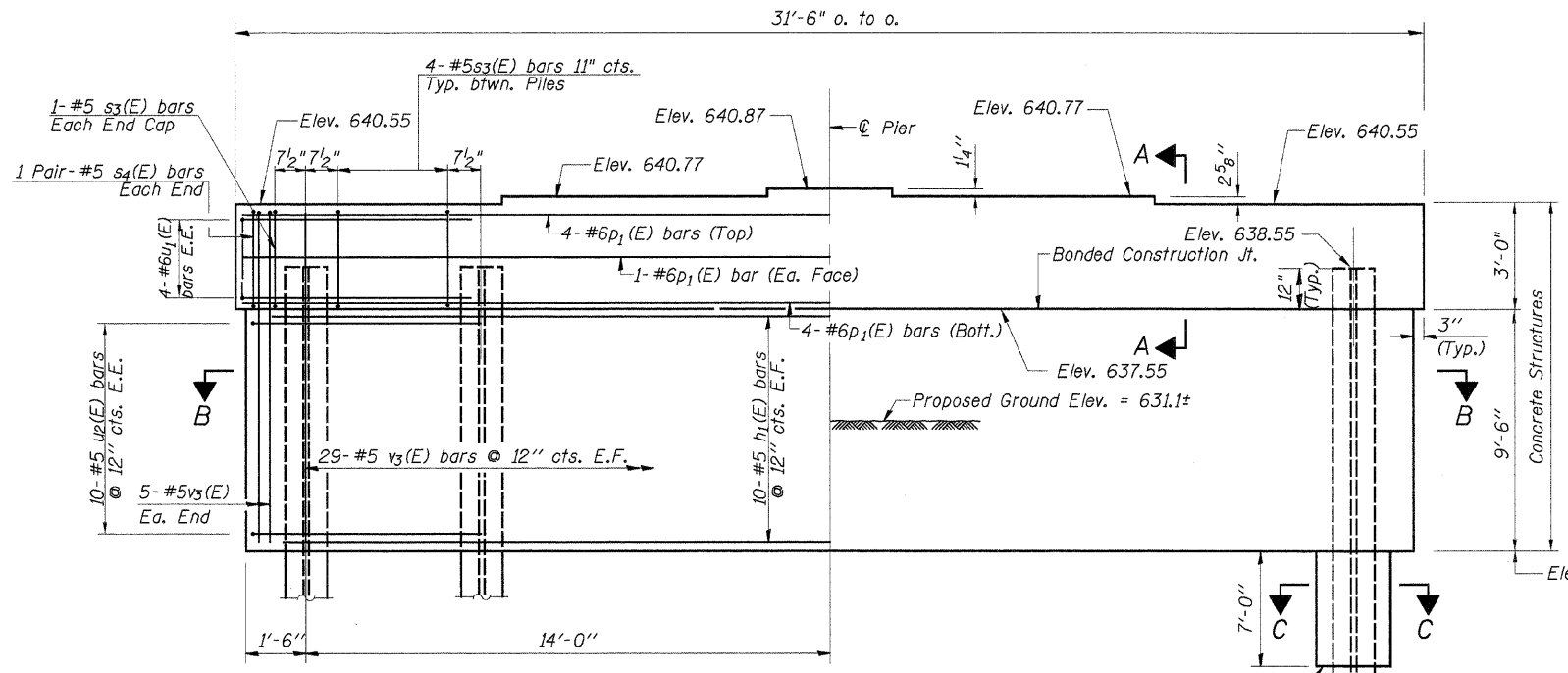
BAR u1(E) & u2(E)



BAR s3(E)



SECTION A-A



ELEVATION
(Looking East)

NOTES

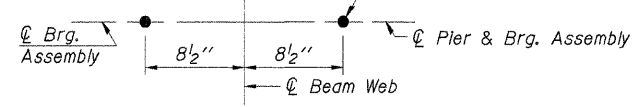
- Space Reinforcement in cap to miss Anchor Bolts.
- Pour Steps monolithically with cap.
- All edges shall have the standard 3/4" Chamfer except as noted.
- Anchor Bolts at fixed bearings may be built into the masonry.

PILE DATA

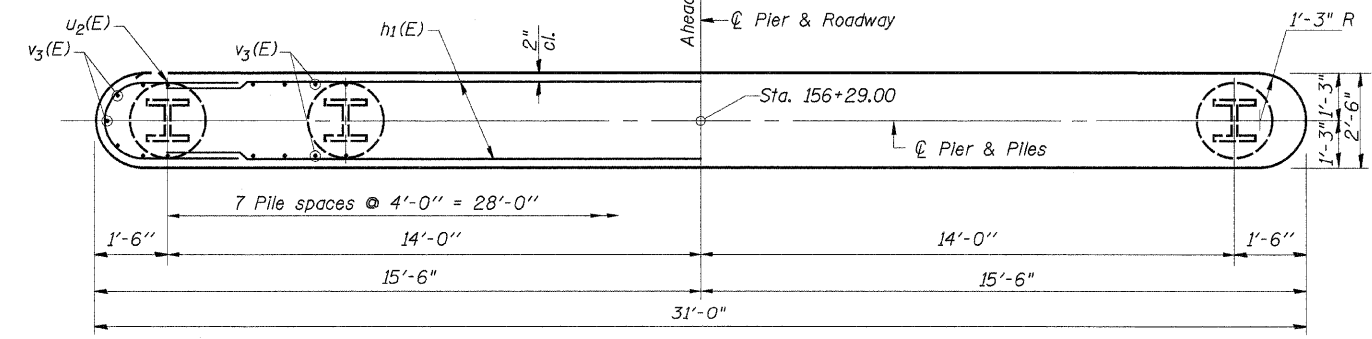
Type..... Steel HP12x53
 No. Req'd..... *8
 Nominal Required Bearing..... 418 kips
 Allowable Resistance Available..... 139 kips
 Est. Length..... 42 Feet/Pile

*Includes 1 Test Pile to be driven in a permanent location.

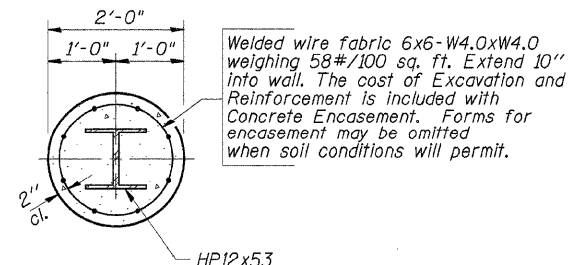
The steel H-piles shall be according to AASHTO M270 Grade 50.
 Drilled holes for 1/2" x 1'-6" Anchor Bolts Typical Ea. Beam See Sheet 12 of 17



ANCHOR BOLT LAYOUT



SECTION B-B



SECTION C-C

BILL OF MATERIAL

| BAR | NO. | SIZE | LENGTH | SHAPE |
|---|-----|------|---------|-------|
| h1(E) | 20 | #5 | 28'-6" | — |
| p1(E) | 10 | #6 | 28'-6" | — |
| s3(E) | 30 | #5 | 11'-7" | □ |
| s4(E) | 4 | #5 | 6'-2" | ┌ |
| u1(E) | 8 | #6 | 9'-1" | ┌ |
| u2(E) | 20 | #5 | 8'-5" | ┌ |
| v3(E) | 68 | #5 | 10'-10" | — |
| Concrete Structures | | | Cu. Yd. | 37.2 |
| Reinforcement Bars, Epoxy Coated | | | Pound | 2,460 |
| Steel Piles HP12x53 | | | Foot | 294 |
| Test Pile Steel HP12x53 | | | Each | 1 |
| Concrete Encasement | | | Cu. Yd. | 6.3 |
| Underwater Structure Excavation Protection - Location 2 | | | Each | 1 |
| Structure Excavation | | | Cu. Yd. | 39 |

Reinforcement bars designated (E) shall be Epoxy Coated

| | |
|----------|-----------------|
| DESIGNED | A.R.K. |
| CHECKED | F.J.S. & S.F.M. |
| DRAWN | S.A.P. |
| CHECKED | A.R.K. & F.J.S. |

PIER 2
 SECTION 03-00147-01-BR
 COUNTY HIGHWAY 7
 STARK COUNTY
 STATION 155+75