

STATE OF ILLINOIS
DEPARTMENT OF TRANSPORTATION
DIVISION OF HIGHWAYS

PLANS FOR PROPOSED ENHANCEMENTS

INDEX OF SHEETS

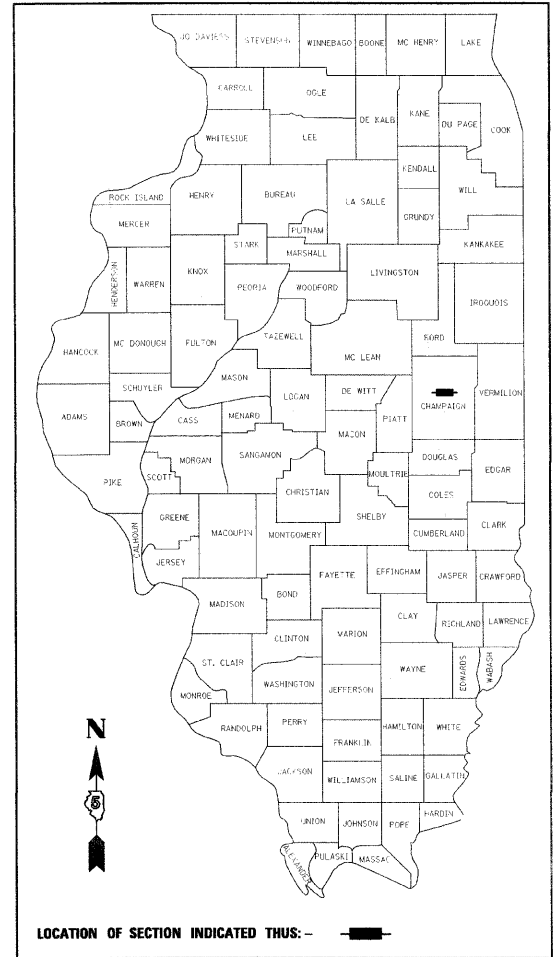
SHEET NO.	DESCRIPTION
1	COVER SHEET
2	HIGHWAY STANDARDS, AND GENERAL NOTES
3	SUMMARY OF QUANTITIES
4	GENERAL PLAN AND ELEVATION
5	STRUCTURE DETAILS
6	RAILING DETAILS
7	MASONRY DETAILS
8	PLANTING PLAN
9	PLANTING DETAILS
10	MATERIALS PLAN
11	LARGE COLUMN DETAILS
12	SMALL COLUMN DETAILS
13 TO 15	COLUMN DETAILS
16	LIGHTING PLAN
17 TO 18	LIGHTING DETAILS
19	LIGHTING SCHEDULE
20 TO 21	SOIL BORINGS
22	CONTROL INSTALLATION (BASE MOUNT CASSETTE)

PLAN 1 INCH = 20 FEET
 PROFILE HORIZ. 1 INCH = 20 FEET
 PROFILE VERT. 1 INCH = 5 FEET
 CROSS SECTIONS HORIZ. 1 INCH = 10 FEET
 CROSS SECTIONS VERT. 1 INCH = 5 FEET

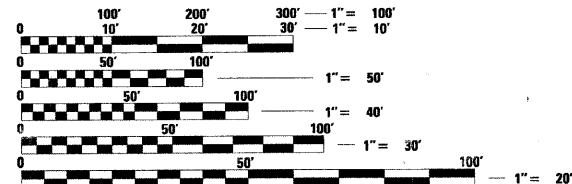
**CITY OF CHAMPAIGN
CHAMPAIGN COUNTY, ILLINOIS
SECTION NO. 00-00374-03-LS
PROJECT NO. TE-00D5(85)
JOB NO. C-95-327-07
CITY PROJECT NO. 22-0000-07900-0377**

CURTIS ROAD BRIDGE ENHANCEMENT

R 8 E



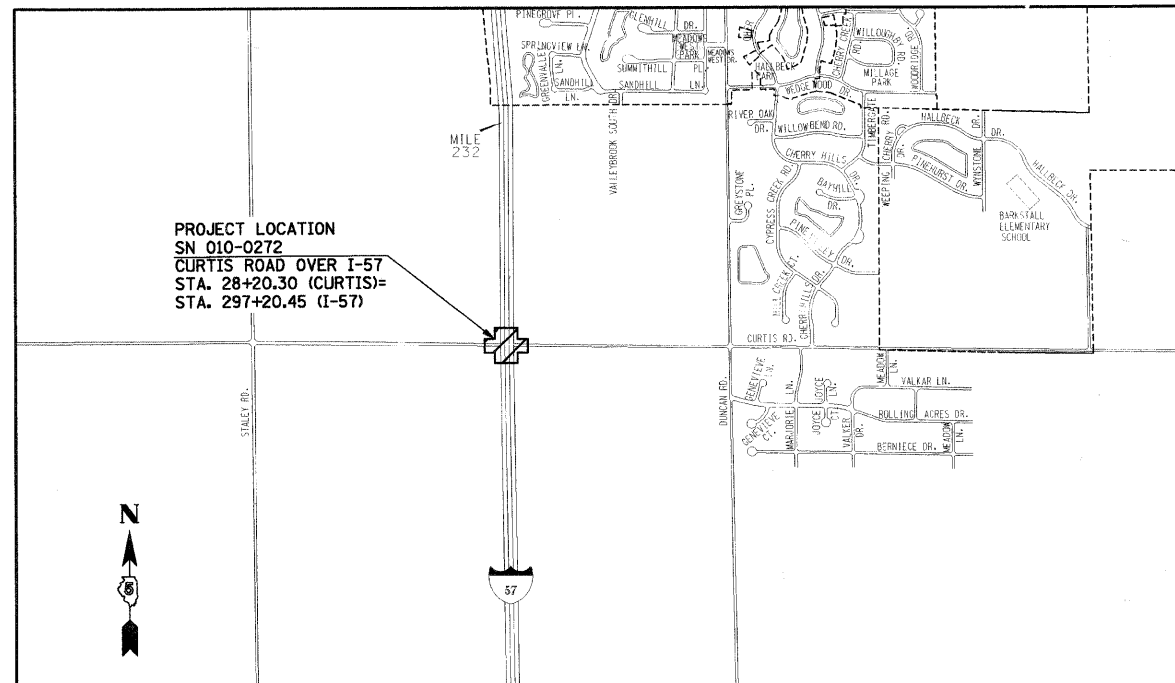
ILLINOIS HIGHWAY STANDARD DRAWINGS
(SEE SHEET NO. 2)



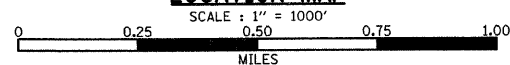
FULL SIZE PLANS HAVE BEEN PREPARED USING STANDARD ENGINEERING SCALES. REDUCED SIZED PLANS WILL NOT CONFORM TO STANDARD SCALES. IN MAKING MEASUREMENTS ON REDUCED PLANS, THE ABOVE SCALES MAY BE USED.

J.U.L.I.E.
JOINT UTILITY LOCATION INFORMATION FOR EXCAVATION
1-800-892-0123

CONTRACT NO. 91382



LOCATION MAP



T 19 N
Revised 3/28/08

DESIGN DESIGNATION
INTERSTATE ROUTE 57
PRINCIPAL ARTERIAL ADT 27,600
CURTIS ROAD
MINOR ARTERIAL ADT 19,600

APPROVED		Jan 11, 20 08
CHAMPAIGN CITY ENGINEER		
PASSED		1/21 20 08
DISTRICT FIVE ENGINEER OF LOCAL ROADS & STREETS		
Releasing For Bid Based on Limited Review		Jan 22 20 08
DEPUTY DIRECTOR OF HIGHWAYS, REGION THREE ENGINEER		
STATE OF ILLINOIS DEPARTMENT OF TRANSPORTATION		





PROFESSIONAL ENGINEER
CLARK DIETZ, INC.
DATE: 10 Jan 08
LICENSE EXPIRES 11-30-09

**Hitchcock
Design Group**
Creating Better Places[®]

**Clark Dietz
ENGINEERS**
DESIGN FIRM REGISTRATION
No. 184-000450

1817 SOUTH NEIL STREET
SUITE 100
CHAMPAIGN, IL 61820
PHONE : 217.373.8900
FAX : 217.373.8923

HIGHWAY STANDARDS

SHEET NO.	NAME OF STANDARD
000001-04	STANDARD SYMBOLS, ABBREVIATIONS AND PATTERNS
001001-01	AREAS OF REINFORCEMENT BARS
01006	DECIMAL OF AN INCH AND OF A FOOT
280001-04	TEMPORARY EROSION CONTROL SYSTEMS
701101-01	OFF-ROAD OPERATIONS, MULTILANE, 15' TO 24" FROM PAVEMENT EDGE
701106-01	OFF-ROAD OPERATIONS, MULTILANE, MORE THAN 15' AWAY
701400-02	APPROACH TO LANE CLOSURE, FREEWAY/EXPRESSWAY
701401-04	LANE CLOSURE, FREEWAY/EXPRESSWAY
701406-04	LANE CLOSURE, FREEWAY/EXPRESSWAY, DAY OPERATIONS ONLY
701411-04	LANE CLOSURE, MULTILANE, AT ENTRANCE OR EXIT RAMP, FOR SPEEDS \geq 45 MPH
701601-05	URBAN LANE CLOSURE, MULTILANE, 1W OR 2W WITH NONTRAVERSABLE MEDIAN
701901	TRAFFIC CONTROL DEVICES
805001	ELECTRICAL SERVICE INSTALLATION DETAILS 
814001-01	HANDHOLES 

GENERAL NOTES


- ALL ELEVATIONS SHOWN ARE REFERRED TO THE N.A.V.D. 88 DATUM.
- WHEREVER IN THE PLANS OR SPECIFICATIONS THE TERM "STANDARD SPECIFICATIONS" IS USED IT SHALL BE UNDERSTOOD BY THE CONTRACTOR TO MEAN THE "STANDARD SPECIFICATIONS FOR ROAD AND BRIDGE CONSTRUCTION" AS PREPARED BY THE DEPARTMENT OF TRANSPORTATION OF THE STATE OF ILLINOIS AND ADOPTED ON JANUARY 1, 2007.
- ANY REFERENCE TO STANDARDS THROUGHOUT THE PLANS SHALL BE INTERPRETED TO BE THE LATEST STANDARDS OF THE DEPARTMENT AS SHOWN ON THE HIGHWAY STANDARDS AND LEGEND SHEET.
- IT IS THE CONTRACTOR'S RESPONSIBILITY TO ASCERTAIN EXISTING FIELD CONDITIONS BEFORE BIDDING ON THE PROJECT.
- THE CONTRACTOR WILL BE REQUIRED TO COMPLY WITH STATE REGULATIONS REGARDING AIR, WATER, AND NOISE POLLUTION.
- THE CONTRACTOR SHALL TAKE CARE NOT TO STORE OR DISPOSE OF DEBRIS OR UNSUITABLE MATERIALS WITHIN LIMITS OF THE IMPROVEMENT AND TAKE CARE TO LIMIT CONSTRUCTION TO WITHIN THE RIGHT-OF-WAY AND EASEMENT AREAS. UNNECESSARY ENCROACHMENTS ONTO PRIVATE OR PUBLIC AREAS WILL NOT BE ALLOWED.
- WHERE SECTION OR SUBSECTION MONUMENTS, BENCHMARKS, OR IRON PIPE MONUMENTS ARE ENCOUNTERED, THE ENGINEER SHALL BE NOTIFIED BEFORE SUCH MONUMENTS ARE REMOVED. THE CONTRACTOR SHALL PROTECT AND CAREFULLY PRESERVE ALL MONUMENTS UNTIL AN ILLINOIS REGISTERED LAND SURVEYOR OR AGENT HAS WITNESSED OR OTHERWISE REFERENCED THEIR LOCATION. THE CONTRACTOR WILL BE RESPONSIBLE FOR HAVING AN ILLINOIS REGISTERED LAND SURVEYOR RE-ESTABLISH ANY MONUMENTS UNNECESSARILY DESTROYED BY HIS OPERATIONS.
- THE FINISHED EARTHWORK SHALL HAVE VEGETATIVE SUSTAINING SOIL COVERING THE TOP 4 INCHES IN AREAS TO BE SEEDED. THE TOPSOIL REQUIRED WILL BE PAID FOR PER SQUARE YARD FOR TOPSOIL FURNISH AND PLACE, 4".
- ALL DISTURBED AREAS SHALL BE SEEDED AS SHOWN ON THE PLANS. SEEDING AND MULCHING SHALL BE DONE AS SOON AS EACH STAGE IS COMPLETED AS DIRECTED BY THE ENGINEER. EXISTING TURF WHICH IS DAMAGED OUTSIDE THE LIMITS OF CONSTRUCTION SHALL BE REESTABLISHED WITH SEED AS DIRECTED BY THE ENGINEER AT THE CONTRACTOR'S EXPENSE.
- UTILITY LOCATIONS WERE PLOTTED FROM INFORMATION FURNISHED BY THE VARIOUS UTILITY COMPANIES AND THEIR ACCURACY SHOULD BE CONSIDERED APPROXIMATE. NO RESPONSIBILITY IS ACCEPTED FOR THE LOCATIONS AS SHOWN OR THAT ALL UTILITY FACILITIES ARE SHOWN. UTILITY LOCATIONS SHOWN IN THE PLANS ARE APPROXIMATE AND REPRESENT LOCATIONS PRIOR TO ANY UTILITY RELOCATIONS REQUIRED TO ACCOMMODATE THE PROPOSED CONSTRUCTION. THE CONTRACTOR IS ADVISED THAT SOME UTILITY COMPANIES MAY HAVE RELOCATED THEIR FACILITIES PRIOR TO THE START OF CONSTRUCTION UNDER THIS CONTRACT. BEFORE COMMENCING CONSTRUCTION OPERATIONS THE CONTRACTOR SHALL OBTAIN FROM THE ENGINEER ANY AVAILABLE INFORMATION REGARDING THE RELOCATED POSITIONS OF UTILITIES WITHIN THE PROJECT LIMITS. WHETHER VARIOUS UTILITIES HAVE BEEN RELOCATED OR REMAIN IN THEIR ORIGINAL LOCATION, IT SHALL BE THE RESPONSIBILITY OF THE CONTRACTOR TO DETERMINE THEIR EXACT LOCATION AT THE TIME OF CONSTRUCTION AND TO PROTECT SAME. THE CONTRACTOR'S ATTENTION IS DIRECTED TO THE SPECIAL PROVISION ENTITLED "COOPERATION WITH UTILITIES" AND ARTICLE 107.31 OF THE STANDARD SPECIFICATIONS.
- THE CONTRACTOR SHALL COORDINATE CONSTRUCTION ACTIVITIES WITH UTILITY COMPANIES.
- THE CONTRACTOR SHALL BE RESPONSIBLE FOR PROTECTING UTILITY PROPERTY FROM CONSTRUCTION OPERATIONS AS OUTLINED IN ARTICLE 107.31 OF THE STANDARD SPECIFICATIONS. THE JULIE NUMBER IS 800-892-0123. A MINIMUM OF 48 HOURS ADVANCE NOTICE IS REQUIRED.
- UTILITY OWNERS:
 - *INDICATES J.U.L.I.E. MEMBER
 - *URBANA-CHAMPAIGN SANITARY DISTRICT
P.O. BOX 669
URBANA, ILLINOIS 61803
(217) 367-3409
 - *ILLINOIS-AMERICAN WATER COMPANY
201 DEVONSHIRE DR.
CHAMPAIGN, ILLINOIS 61820
(217) 373-3258
 - *AMEREN IP
(ELECTRICAL DIST./GAS)
1112 ANTHONY DRIVE
URBANA, ILLINOIS 61801
(217) 383-7280
 - *INSIGHT
303 FAIRLAWN DRIVE
URBANA, ILLINOIS 61801
(217) 384-2510
 - *AT&T
201 S. NEIL STREET
CHAMPAIGN, ILLINOIS 61820
(217) 398-7990
 - UNIVERSITY OF ILLINOIS
OPERATIONS AND MAINTENANCE
PHYSICAL PLANT SERVICE BUILDING
1501 S. OAK STREET
CHAMPAIGN, ILLINOIS 61821
217-333-3463
- AT THIS TIME THERE ARE NO KNOWN UTILITY CONFLICT WITH THE UI LATERAL NATURAL GAS LINE AS RELOCATED IN CONTRACT #90758. THE CONTRACTOR MAY OBTAIN AS BUILT PLANS FROM THE UNIVERSITY OF ILLINOIS OPERATIONS AND MAINTENANCE DEPARTMENT.
- THE CONTRACTOR SHALL PROVIDE AND INSTALL TWO WEIGHTED SAND BAGS ON EACH TYPE II BARRICADE USED. (ONE WEIGHTED SAND BAG ACROSS EACH BOTTOM RAIL.)
- FOR STABILIZATION, ALL TYPE III BARRICADES SHALL REQUIRE A MINIMUM OF FOUR SAND BAGS PER BARRICADE.
- THE CITY OF CHAMPAIGN SHALL BE RESPONSIBLE FOR NOTIFYING THE PUBLIC, THE UNITED STATES POSTAL SERVICE, AND THE EMERGENCY SERVICE AGENCIES OF ALL CHANGES IN THE TRAFFIC MAINTENANCE PLANS. THE CONTRACTOR SHALL NOTIFY THE CITY OF CHAMPAIGN OF ALL CHANGES IN THE TRAFFIC MAINTENANCE PLANS A MINIMUM OF 48 HOURS IN ADVANCE.
- THE CONTRACTOR SHALL BE RESPONSIBLE FOR CLEANUP OF THE SITE PRIOR TO FINAL ACCEPTANCE IN ACCORDANCE WITH ARTICLE 104.06 OF THE STANDARD SPECIFICATIONS. THIS WORK SHALL ALSO INCLUDE CLEANING ALL DRAINAGE FACILITIES OF FOREIGN MATERIALS.

F.A. RTE.	SECTION	COUNTY	TOTAL SHEETS	SHEET NO.
I-57	00-00374-03-LS	CHAMPAIGN	21	2
STA.		TO STA.		
FED. ROAD DIST. NO.		ILLINOIS	FED. AID PROJECT	

CONTRACT NO. 91382

REVISIONS	
NAME	DATE
RLH	3/18/08

Revised 3/28/08



DESIGN FIRM REGISTRATION
No. 184-000450
118 SOUTH CLINTON STREET
SUITE 400
CHICAGO, IL 60661
PHONE : 312.648.9800
FAX : 312.648.0204

ILLINOIS DEPARTMENT OF TRANSPORTATION

HIGHWAY STANDARDS AND GENERAL NOTES

SCALE: As Noted
DATE: 01/04/08

DRAWN BY SLD
CHECKED BY JTP

SUMMARY OF QUANTITIES

F.A. RTE.	SECTION	COUNTY	TOTAL SHEETS	SHEET NO.
I-57	00-00374-03-LS	CHAMPAIGN	21	3
STA.		TO STA.		
FED. ROAD DIST. NO.	ILLINOIS	FED. AID PROJECT		
CONTRACT NO. 91382				

ITEM NUMBER	PAY ITEM	CONSTRUCTION CODE Y003	TOTAL QUANTITY
21101615	TOPSOIL FURNISH AND PLACE, 4"	SQ YD	970
25000210	SEEDING, CLASS 2A	ACRE	0.2
25000400	NITROGEN FERTILIZER NUTRIENT	POUND	18
25000500	PHOSPHORUS FERTILIZER NUTRIENT	POUND	18
25000600	POTASSIUM FERTILIZER NUTRIENT	POUND	18
25100105	MULCH METHOD 1	ACRE	0.2
25100635	HEAVY DUTY EROSION CONTROL BLANKET	SQ YD	217
25200200	SUPPLEMENTAL WATERING	UNIT	10
50200100	STRUCTURE EXCAVATION	CU YD	121
50300225	CONCRETE STRUCTURES	CU YD	155.6
50800205	REINFORCEMENT BARS, EPOXY COATED	POUND	10820
50901755	PARAPET RAILING, SPECIAL	FOOT	539
51201400	FURNISHING STEEL PILES HP10X42	FOOT	833
51202305	DRIVING PILES	FOOT	833
51203400	TEST PILE STEEL HP10X42	EACH	3
63100167	TRAFFIC BARRIER TERMINAL TYPE 1, SPECIAL (TANGENT)	EACH	1
63304385	TRAFFIC BARRIER TERMINAL REMOVAL, TYPE 1	EACH	1
67100100	MOBILIZATION	L SUM	1
78201000	TERMINAL MARKER - DIRECT APPLIED	EACH	1
80400100 ⁵	ELECTRIC SERVICE INSTALLATION, SPECIAL	L SUM EACH	1
81012200	CONDUIT IN TRENCH, 3/4" DIA., PVC	FOOT	354 ³¹⁷
81012600	CONDUIT IN TRENCH, 2" DIA., PVC	FOOT	108 ²⁰⁵
81021330	CONDUIT PUSHED, 2" DIA., PVC	FOOT	100 ¹⁶⁰
81300800	JUNCTION BOX, STAINLESS STEEL, ATTACHED TO STRUCTURE, 18" x 12" x 6"	EACH	1
81400730	HANDHOLE, COMPOSITE CONCRETE	EACH	1
81603035	UNIT DUCT, 600V, 2-1C NO. 6, 1/C NO. 6 GROUND (XLP-TYPE USE), 1" DIA. POLYETHYLENE	FOOT	700
81702450	ELECTRICAL CABLE IN CONDUIT, 600V (XLP-TYPE USE) 3 1/C ^{NO.} X10	FOOT	1254 ¹²⁵²
81900200	TRENCH AND BACKFILL FOR ELECTRICAL WORK	FOOT	1161 ¹¹⁷¹
82500510	LIGHTING CONTROLLER TYPE CB-RCS 60 AMP-240 VOLT	EACH	1
A2002420	TREE, BETULA NIGRA HERITAGE (HERITAGE RIVER BIRCH), 2 1/2" CALIPER, BALLED AND BURLAPPED	EACH	12
D2015401	SHRUB, JUNIPERUS CHINENSIS 'KALLAY'S COMPACTA' (KALLAY COMPACT JUNIPER), 5 GALLON	EACH	84
X0325403	CONDUIT, FLEXIBLE NON-METALLIC, WEATHERPROOF, 2"	EACH	4
XX005856	MULCH - SHREDDED HARDWOOD BARK, 3" DEPTH	CU YD	40
XX006302	NEPETA X FAASSENII 'WALKERS LOW' (WALKERS LOW CATMINT)	EACH	1000
Z0013798	CONSTRUCTION LAYOUT	L SUM	1
Z0076600	TRAINEES	HOUR	
5000839	PERENNIAL, FALLOPIA JAPONICA 'COMPACTA' (COMPACT FLEECE FLOWER), 1 GALLON	EACH	3480
5000840	PERENNIAL, MISCANTHUS SINENSIS 'PURPURASCENS' (PURPLE SILVER GRASS), 2 GALLON	EACH	40

ITEM NUMBER	PAY ITEM	CONSTRUCTION CODE Y003	TOTAL QUANTITY
X8250500	5000841 LIGHTING UNIT X COMPLETE, SPECIAL	EACH	6
X0324390	5000842 FLOOD LIGHTING UNIT B, COMPLETE	EACH	6
5000843	MASONRY COLUMN, LARGE	EACH	2
5000844	MASONRY COLUMN, SMALL	EACH	4
70100420	TRAFFIC CONTROL AND PROTECTION, STANDARD 701411	EACH	2
70100700	TRAFFIC CONTROL AND PROTECTION, STANDARD 701406	L SUM	1
70100800	TRAFFIC CONTROL AND PROTECTION, STANDARD 701401	L SUM	1
70102630	TRAFFIC CONTROL AND PROTECTION, STANDARD 701601	L SUM	1
81018100	CONDUIT PUSHED, 3/4" DIA., GALVANIZED STEEL	FOOT	120

P:\101359\plans\Summary of Quantities.dgn 3/24/2008

Revised 3/28/08

SEE SPECIAL PROVISIONS

Clawson
ENGINEERS

DESIGN FIRM REGISTRATION
No. 184-000480
118 SOUTH CLINTON STREET
SUITE 300
CHICAGO, IL 60661
PHONE : 312.848.9900
FAX : 312.848.0204

REVISIONS	
NAME	DATE
RLH	3/18/08

ILLINOIS DEPARTMENT OF TRANSPORTATION

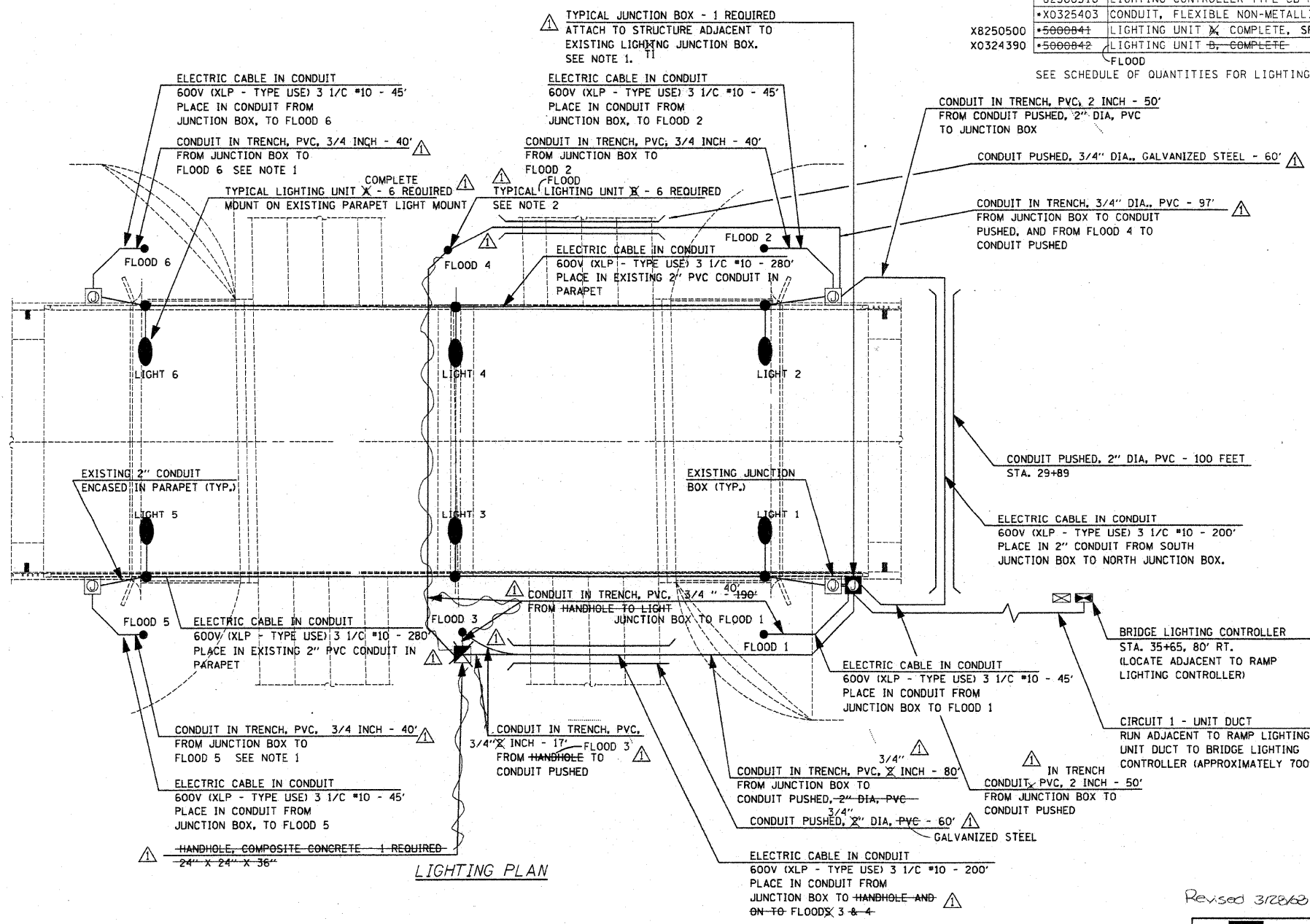
SUMMARY OF QUANTITIES

SCALE: As Noted DRAWN BY SLD
DATE: 01/04/08 CHECKED BY JTP

BRIDGE LIGHTING BILL OF MATERIALS

CODE NO.	DESCRIPTION	UNIT	QUANTITY
8040010X	ELECTRIC SERVICE INSTALLATION, SPECIAL	EACH LUMP SUM	1
81012200	CONDUIT IN TRENCH, 3/4" DIA., PVC	FOOT	317-354
81012600	CONDUIT IN TRENCH, 2" DIA., PVC	FOOT	205-108
81018100	CONDUIT PUSHED, 3/4" DIA., GALVANIZED STEEL	FOOT	120
81021330	CONDUIT PUSHED, 2" DIA., PVC	FOOT	160-100
81300800	JUNCTION BOX, SS, ATTACH TO STRUCT., 18" X 12" X 6"	EACH	1
81400730	HANDHOLE, COMPOSITE CONCRETE	EACH	1
81603035	UNIT DUCT, 600V, 2-1C NO. 6, 1/C NO. 6 GROUND (XLP-TYPE USE), 1" DIA. POLYETHYLENE	FOOT	700
81702450	ELEC. CABLE IN CONDUIT, 600V (XLP-TYPE USE) 3 1/C X10	FOOT	12521254
81900200	TRENCH AND BACKFILL FOR ELECTRICAL WORK	FOOT	11711161
82500510	LIGHTING CONTROLLER TYPE CB-RCS 60 AMP 240 VOLT	EACH	1
*X0325403	CONDUIT, FLEXIBLE NON-METALLIC, WEATHERPROOF, 2"	EACH	4
*5000041	LIGHTING UNIT X COMPLETE, SPECIAL	EACH	6
*5000042	LIGHTING UNIT B, COMPLETE	EACH	6

F.A. RTE.	SECTION	COUNTY	TOTAL SHEETS	SHEET NO.
I-57	00-00374-03-LS	CHAMPAIGN	21	16
STA.		TO STA.		
FED. ROAD DIST. NO.		ILLINOIS	FED. AID PROJECT	
CONTRACT NO. 91382				



X8250500
X0324390
SEE SCHEDULE OF QUANTITIES FOR LIGHTING SCHEDULE

- NOTES:**
- BRING CIRCUITS UP INTO JUNCTION/BOX THROUGH RIGID CONDUIT IN TRENCH. CONNECT CONDUITS TO JUNCTION BOX WITH LIQUID TIGHT FLEXIBLE CONDUIT (MAX LENGTH 3' TO ACCOMMODATE MOVEMENT OF PARAPET WALL WITH RESPECT TO THE CONDUIT PENETRATING THE GROUND. CONNECT JUNCTION BOXES TOGETHER WITH 2-2" NIPPLES.
 - COORDINATE FINAL FIXTURE LOCATION AND AIMING WITH ENGINEER IN THE FIELD. FLOODS 3 & 4 AND ASSOCIATED HANDHOLES SHALL BE OFFSET 3' FROM COLUMN CENTERLINE TO BE OUT OF DITCH FLOWLINE. 100W LAMPS FOR FLOODS 1,2,5, & 6 SHALL BE 70W M.H. LAMPS FOR FLOODS 3 & 4 SHALL BE 100W M.H.

REVISIONS	
NAME	DATE
RLH	3/18/08

ILLINOIS DEPARTMENT OF TRANSPORTATION

LIGHTING PLAN

SCALE: As Noted
DATE: 01/04/08

DRAWN BY RS
CHECKED BY MTP

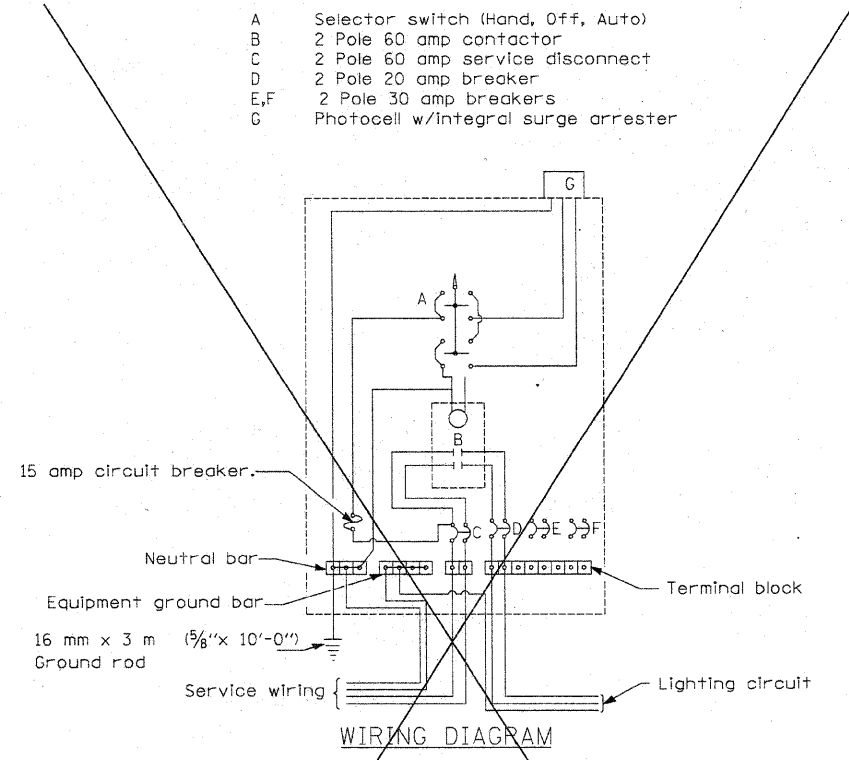
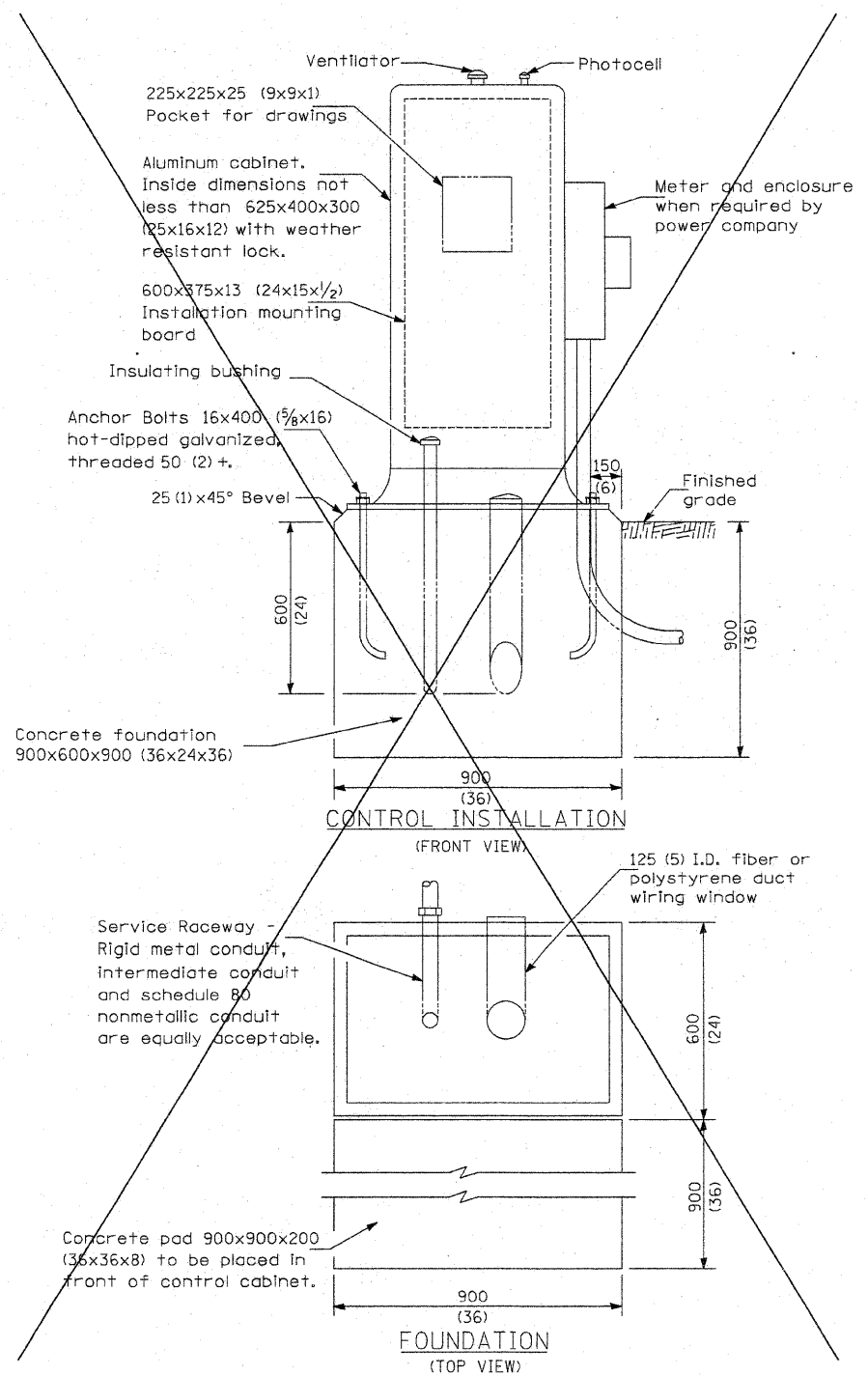
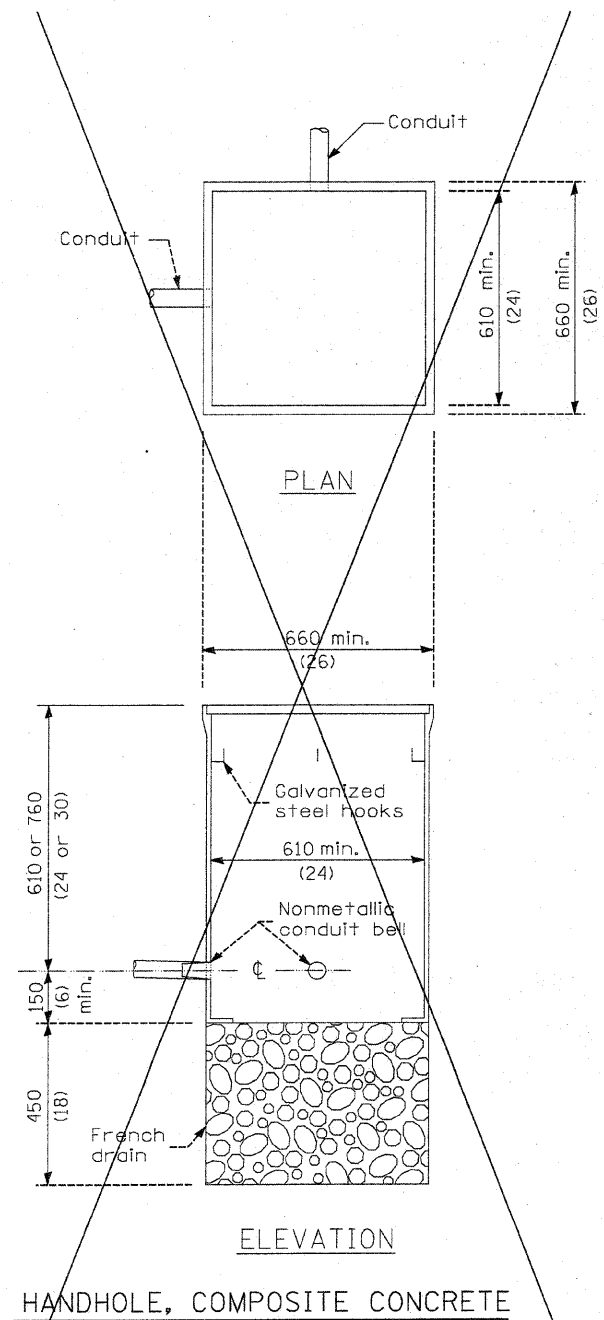
Revised 3/28/08

Clampetz
ENGINEERS

DESIGN FIRM REGISTRATION
No. 184-000450
118 SOUTH CLINTON STREET
SUITE 600
CHICAGO, IL 60661
PHONE : 312.846.9900
FAX : 312.849.0204

P:\1013587\plans\lighting\Shimada.dgn 3/27/2008

F.A. RTE.	SECTION	COUNTY	TOTAL SHEETS	SHEET NO.
I-57	00-00374-03-LS	CHAMPAIGN	21	17
STA.		TO STA.		
FED. ROAD DIST. NO.	ILLINOIS	FED. AID PROJECT		
CONTRACT NO. 91382				



- A Selector switch (Hand, Off, Auto)
- B 2 Pole 60 amp contactor
- C 2 Pole 60 amp service disconnect
- D 2 Pole 20 amp breaker
- E,F 2 Pole 30 amp breakers
- G Photocell w/integral surge arrester

GENERAL NOTES

Locate service pole and control installation adjacent to R.O.W. line with a minimum distance of 9 m (30') from the edge of pavement. Exact location shall be established by the Engineer.

The underground service entrance wiring shall not exceed 46 m (150'). Total aerial and underground service between the control installation and primary transformer shall not exceed 76 m (250').

Raceways shall terminate 75 (3) above top of concrete foundation.

For 480 V. systems, a 480/120 V. control transformer will be required.

All dimensions are in millimeters unless otherwise shown.

- 240 V. SERVICE
- 480 V. SERVICE

REVISIONS	
NAME	DATE
RLH	3/18/08

ILLINOIS DEPARTMENT OF TRANSPORTATION

LIGHTING DETAILS

SCALE: As Noted
DATE: 01/04/08

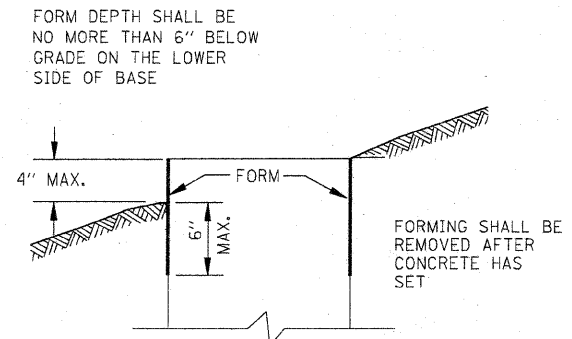
DRAWN BY RS
CHECKED BY MTP

Revised 3/28/08

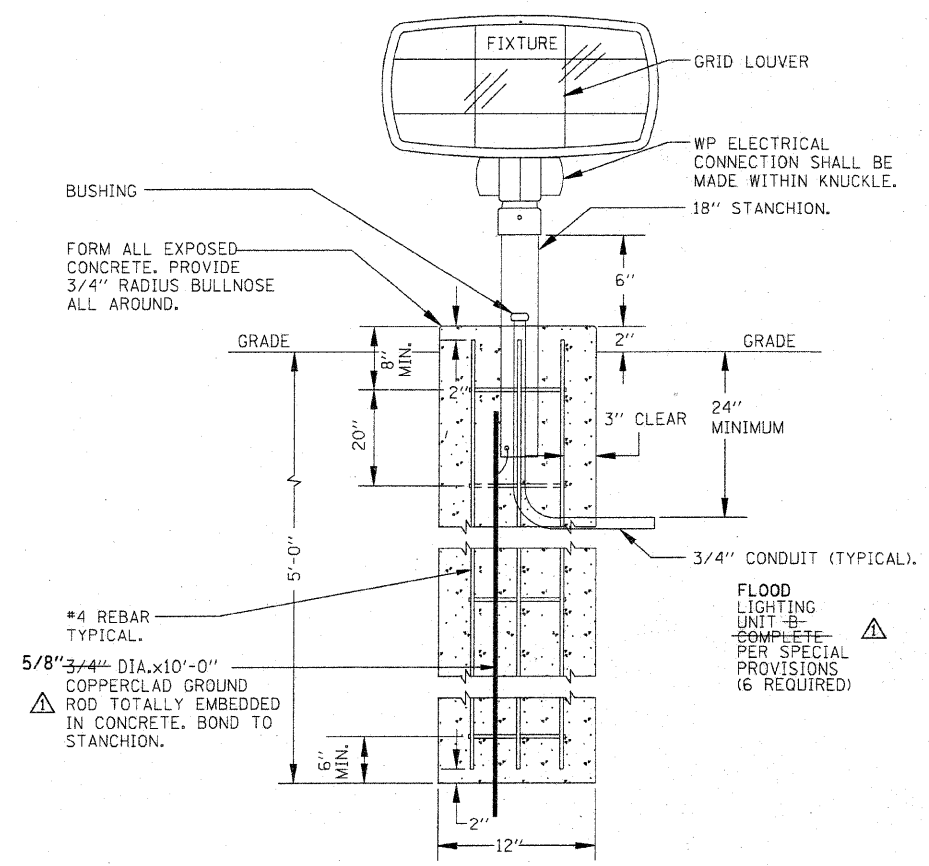
DESIGN FIRM REGISTRATION
No. 184-000450
118 SOUTH CLINTON STREET
SUITE 600
CHICAGO, IL 60681
PHONE : 312.848.9800
FAX : 312.848.0204

Clampetz
ENGINEERS

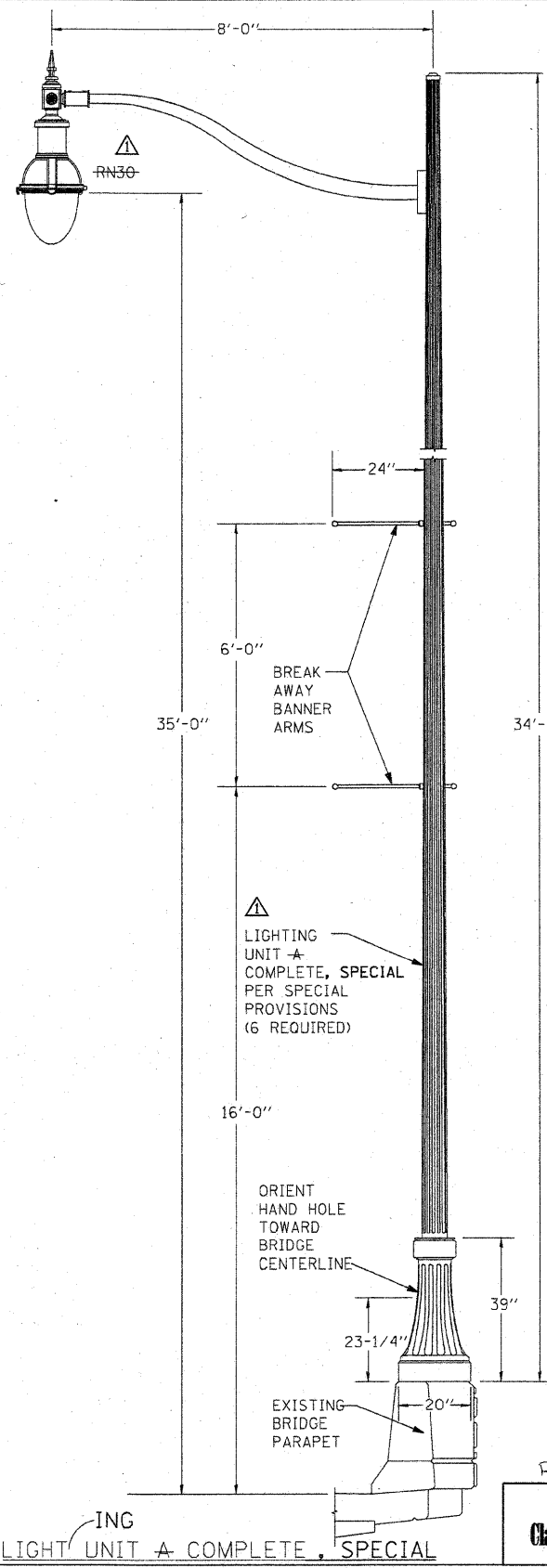
F.A.:	SECTION	COUNTY	TOTAL SHEETS	SHEET NO.
1-57	00-00374-03-LS	CHAMPAIGN	21	18
STA.		TO STA.		
FED. ROAD DIST. NO.	ILLINOIS	FED. AID PROJECT		
CONTRACT NO. 91382				



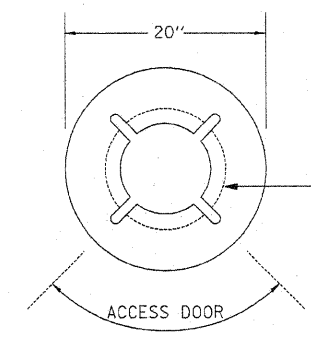
FORMING DETAIL



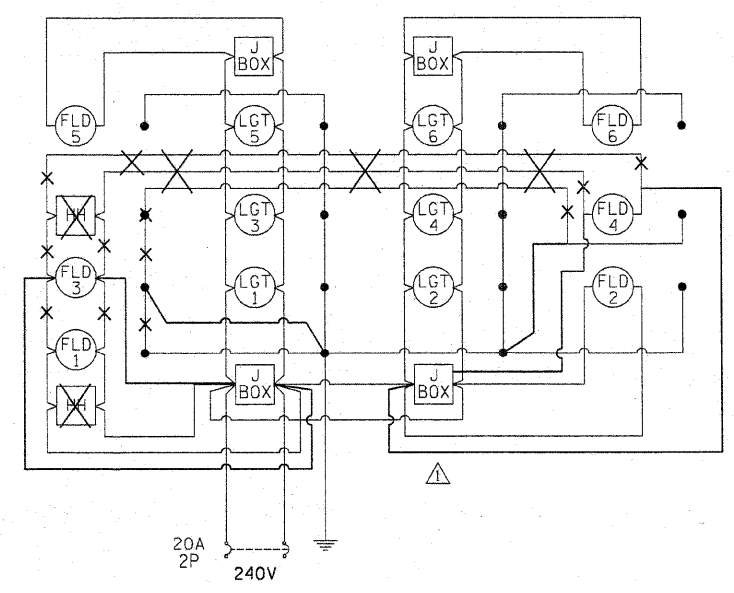
△ LIGHTING UNIT FLOOD LIGHT UNIT B, COMPLETE



△ LIGHTING UNIT A COMPLETE, SPECIAL



BASE ORIENTATION DIAGRAM



NOTES: △
 PROVIDE CIRCUITING PER PLAN.
 TWO POLE AND SURGE PROTECTOR
 PROVIDE TWIN FUSE HOLDER IN EACH POLE BASE.
 PROVIDE FUSES PER MANUFACTURER'S RECOMMENDATIONS.
 THE STANDARD SPECIFICATIONS

REVISIONS	
NAME	DATE
RLH	3/18/08

ILLINOIS DEPARTMENT OF TRANSPORTATION
LIGHTING DETAILS
 SCALE: As Noted
 DATE: 01/04/08
 DRAWN BY: RS
 CHECKED BY: MTP

Revised 3/28/08
 DESIGN FIRM REGISTRATION
 No. 184-000450
 118 SOUTH CLINTON STREET
 SUITE 600
 CHICAGO, IL 60661
 PHONE: 312.648.9800
 FAX: 312.648.0204

P:\081350\plans\sheet\Lighting_Sheet.dgn
 3/27/2008


SCHEDULES OF QUANTITIES

LIGHTING SCHEDULE

LOCATION	LIGHTING UNIT - A COMPLETE, SPECIAL X8250500 (EACH)	FLOOD LIGHTING UNIT - B COMPLETE X0324390 (EACH)	CONDUIT, FLEX. NON-METALLIC, WEATHERPRF, 2" *X0325403 (EACH)	CONDUIT IN TRENCH, 3/4" DIA. PVC 81012200 (FOOT)	CONDUIT IN TRENCH, 2" DIA. PVC 81012600 (FOOT)	CONDUIT PUSHED, 2" DIA. PVC 81021330 (FOOT)	CONDUIT PUSHED, 3/4" DIA. GALVANIZED STEEL 81018100 (FOOT)	JUNCTION BOX, 18" X 12" X 6" 81300800 (EACH)	HANDHOLE, COMPOSITE CONCRETE 81400730 (EACH)	TRENCH AND BACKFILL FOR ELECTRICAL WORK 81900200 (FOOT)	UNIT DUCT 81603035 (FOOT)	ELEC. CABLE IN CONDUIT, 600V (XLP-TYPE USE) 3 1/2" X 10 NO. 81702450 (FOOT)	ELEC. SERVICE INSTALLATION, SPECIAL 80400105 (EACH)	LIGHTING CONTROLLER TYPE CB-RCS 60 AMP - 240 VOLT 82500510 (EACH)
CURTIS 29+25RT	1	1												
CURTIS 29+25LT	1	1												
CURTIS 28+20RT	1	1		2.0					1					
CURTIS 28+20LT	1	1												
CURTIS 27+15RT	1	1												
CURTIS 27+15LT	1	1												
CURTIS 29+53LT			1		8.0					8.0				
CURTIS 29+53RT			1					1						
CURTIS 26+87LT			1											
CURTIS 26+87RT			1											
CURTIS 29+89LT TO 29+89RT						100.0						100.0		
CURTIS 29+53RT TO 29+89RT					50.0					50.0		50.0		
CURTIS 29+53LT TO 29+89LT					50.0					50.0		50.0		
CURTIS 29+53RT TO 35+60RT										700.0	700.0			
CURTIS 29+53RT TO 26+87RT												280.0		
CURTIS 29+53LT TO 26+87LT												280.0		
CURTIS 29+53RT TO 29+25LT				40.0						40.0		45.0		
CURTIS 29+53LT TO 29+25LT				50.0 40.0						50.0 40.0		45.0		
CURTIS 26+87RT TO 27+15RT				40.0						40.0		45.0		
CURTIS 26+87LT TO 27+15LT				40.0						40.0		45.0		
CURTIS 29+53RT TO 28+96RT				80.0	80.0					80.0		72.0		
CURTIS 28+96RT TO 28+36RT						60.0	60.0					60.0		
CURTIS 28+36RT TO 28+20RT				17.0	17.0					16.0 17.0		20.0		
CURTIS 28+20RT TO 28+20LT				145.0						145.0		150.0		
CURTIS 35+65RT													1	1
CURTIS 28+20LT TO 29+25LT				97.0						97.0		102.0		
CURTIS 28+96LT TO 28+36LT							60.0					60.0		
TOTALS	6	6	4	354.0	108.0	100.0	120.0	1	1	1161.0	700.0	1254.0	1	1
UNIT	(EACH)	(EACH)	(EACH)	(FOOT)	(FOOT)	(FOOT)	(FOOT)	(EACH)	(EACH)	(FOOT)	(FOOT)	(FOOT)	(EACH)	(EACH)
PAY ITEM	*5000841 X8250500	*5000842 X0324390	*X0325403	81012200	81012600	81021330	81018100	81300800	81400730	81900200	81603035	81702450	80400105	82500510

p:\0328\plans\sheet\Lighting_Schedule.dgn 3/24/2008

Revised 3/22/08



DESIGN FIRM REGISTRATION
No. 164-000450
118 SOUTH CLINTON STREET
SUITE 800
CHICAGO, IL 60661
PHONE : 312.648.9800
FAX : 312.648.0204

REVISIONS	
RLH	DATE
	3/18/08

ILLINOIS DEPARTMENT OF TRANSPORTATION

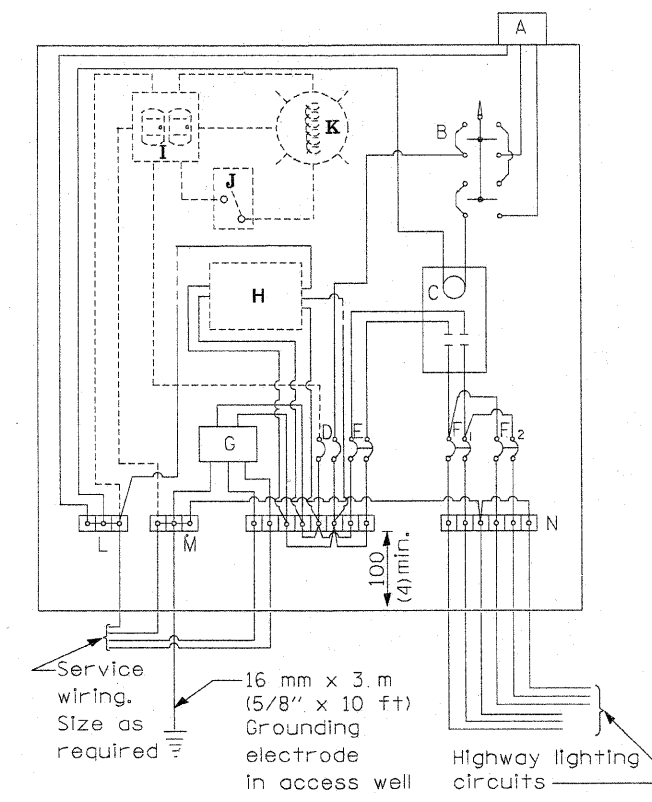
LIGHTING SCHEDULE OF QUANTITIES

SCALE: As Noted
DATE: 01/04/08

DRAWN BY: RS
CHECKED BY: MTP

MATERIALS

- A Photocell w/ integral surge arrester (remote mount in urban areas)
 - B 3 position selector switch HAND-OFF-AUTO
 - C 100 amp* electrically held contactor, 120V operating coil
 - D 15 amp, 1 pole, circuit breaker
 - E 100 amp*, 2 pole, main circuit breaker
 - F 20 amp*, 2 pole, branch circuit breaker (typ). 2 spare c.b. required but not shown
 - G Surge arrester
 - H Transformer (see notes), 1 KVA*, 240/480V primary, 120/240V sec, single phase
 - I GFCI duplex receptacle
 - J Single pole, single throw switch
 - K Shielded security fixture with 100W lamp
 - L Neutral bar
 - M Equipment ground bar
 - N Terminal block (typ)
- (* = Size larger as needed)



CONTROL SCHEMATIC

GENERAL NOTES

Locate service pole and control installation adjacent to R.O.W. line with a minimum distance of 9 m (30') from the edge of pavement. Locate in close proximity to the utility transformer so the service drop does not exceed 46 m (150ft) and the total distance of overhead and underground cable (utility transformer to lighting controller) does not exceed 76 m (250ft). Exact location shall be established by the Engineer.

Wiring shall be panel board fashion. All bends shall be right angles. All runs shall vertical or parallel to panel board. Wires shall be grouped or laced.

All control installation components shall be U.L. listed.

Add receptacle, light, and switch in control cabinet, when specified.

For 480 V service, a step down transformer (dashed lines) is required.

Raceways shall terminate 75 (3) above top of concrete foundation.

Label equipment ground buss and neutral buss.

240 V. SERVICE

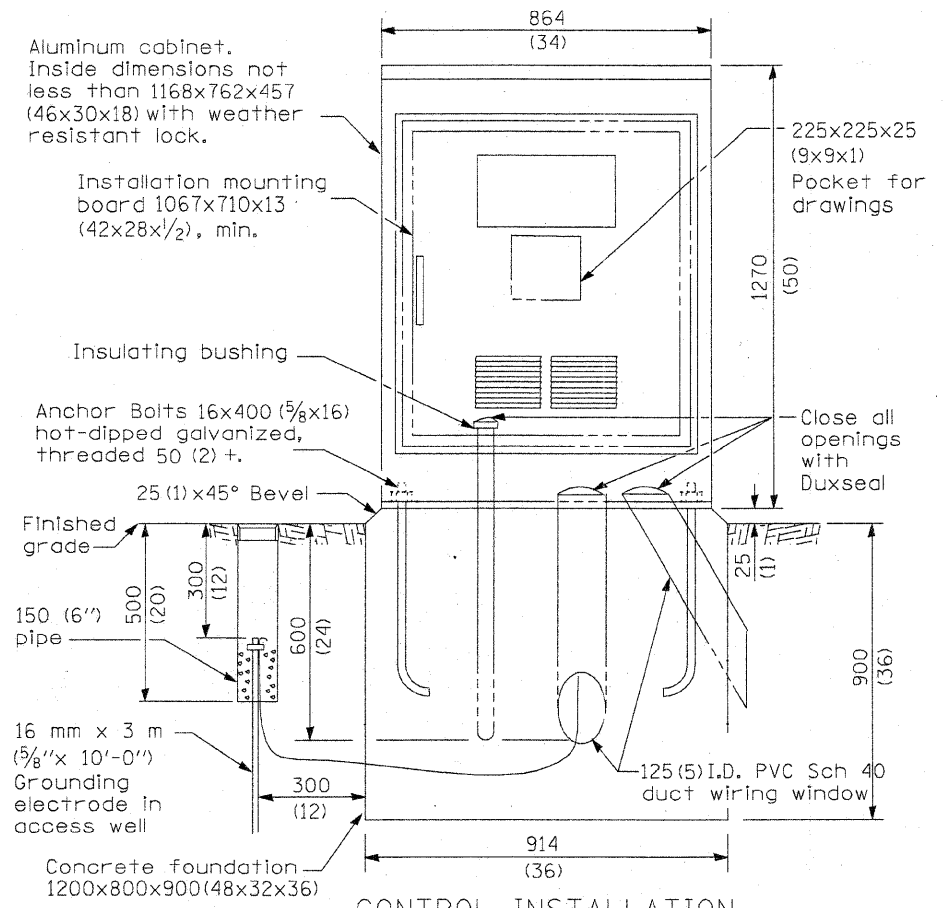
All dimensions are in millimeters (Inches) unless otherwise shown.

480 V. SERVICE

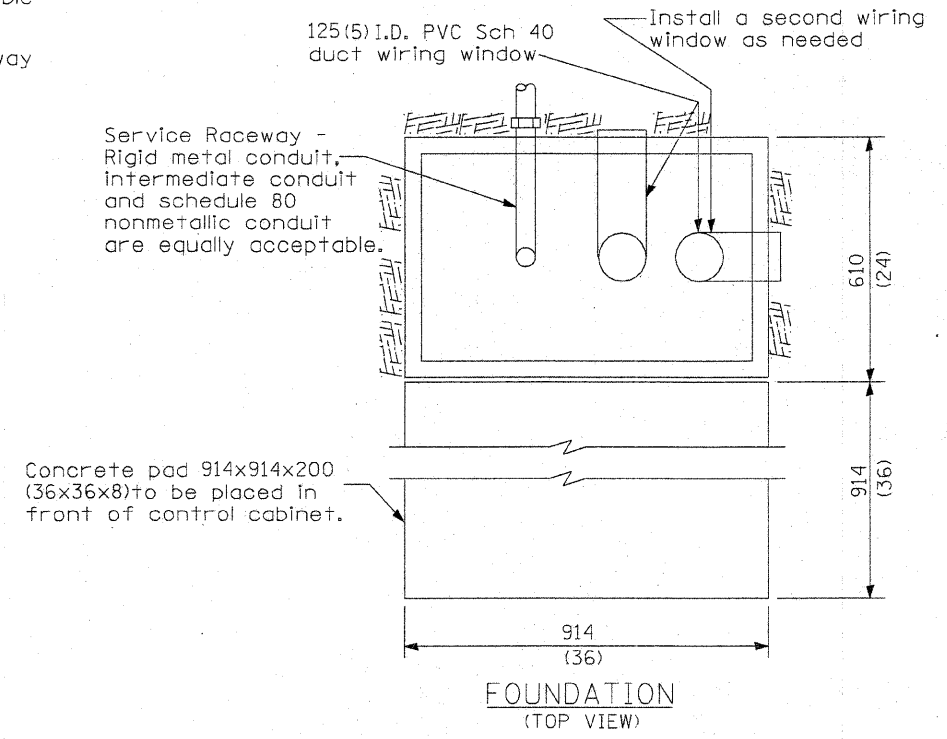
DATE	REVISIONS
	Corrected 1/19/06
3/28/08	Added page

**CONTROL INSTALLATION
Base Mount Cabinet**

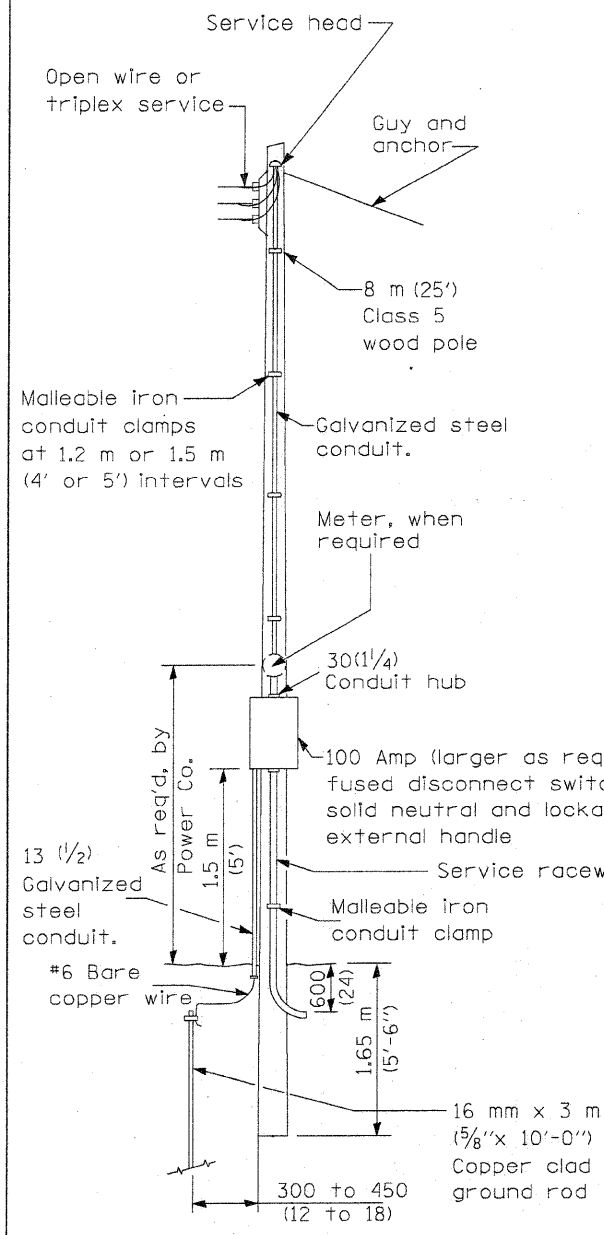
LGT005.DGN



**CONTROL INSTALLATION
(FRONT VIEW)**



**FOUNDATION
(TOP VIEW)**



SERVICE POLE

Aluminum cabinet. Inside dimensions not less than 1168x762x457 (46x30x18) with weather resistant lock.

Installation mounting board 1067x710x13 (42x28x1/2), min.

Insulating bushing
Anchor Bolts 16x400 (5/8x16) hot-dipped galvanized, threaded 50 (2) +.

Finished grade
150 (6'') pipe

16 mm x 3 m (5/8'' x 10'-0'') Grounding electrode in access well

300 (12)

Concrete foundation 1200x800x900 (48x32x36)

25 (1)x45° Bevel

300 (12)

300 (12)

300 (12)

300 (12)

300 (12)

300 (12)

300 (12)

300 (12)

300 (12)

300 (12)

300 (12)

300 (12)

300 (12)