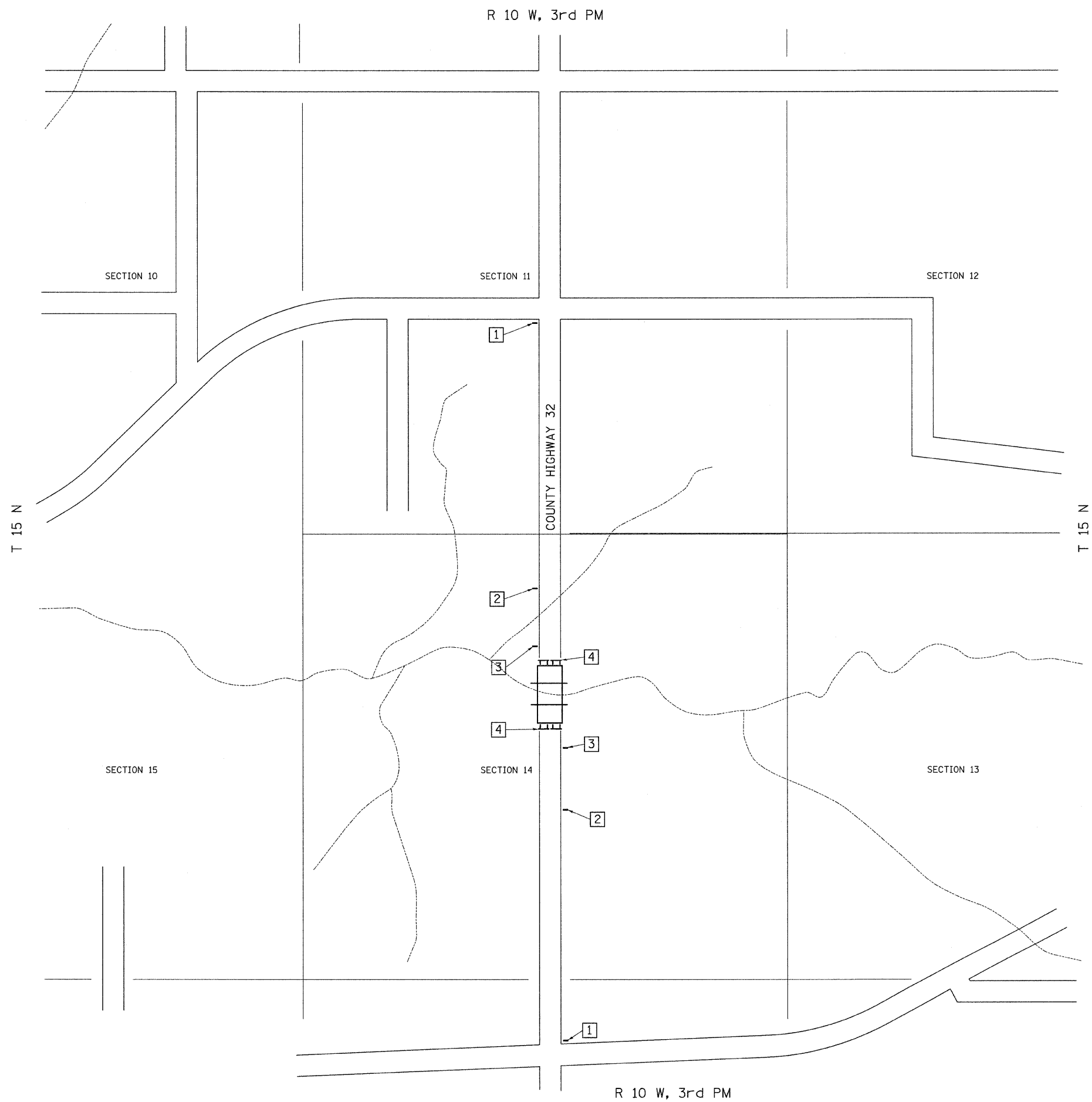


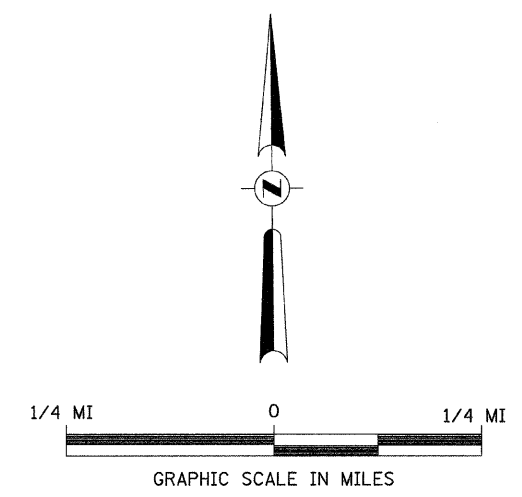
ROUTE NO.	SECTION	COUNTY	TOTAL SHEETS	SHEET NO.
CH 32	*	MORGAN	19	4
FED. ROAD DIST. NO. 7		ILLINOIS	PROJECT BRS-1614(103)	
*07-00098-00-BR			CONTRACT #	

93451



- 1 ROAD CLOSED 3/4 MILE AHEAD LOCAL TRAFFIC ONLY
R11-3
- 2 ROAD CLOSED AHEAD
ROAD CLOSED AHEAD
W20-3
- 3 ROAD CLOSED 500 FT
ROAD CLOSED 500 FT
W20-3
- 4 TYPE III BARRICADES

SEE STANDARD BLR 21 AND SPECIAL PROVISIONS



TRAFFIC CONTROL PLAN
 C.H. 32 OVER NORTH FORK
 MAUVAISE TERRE CREEK
 SECTION 07-00098-00-BR
 MORGAN COUNTY
 STATION 20+00.00