

RTE. NO.	SECTION	COUNTY	TOTAL SHEETS	SHEET NO.
CH 5	*	MASON	12	1

COVER SHEET
* SEC. 05-00016-01-BR

INDEX OF SHEETS

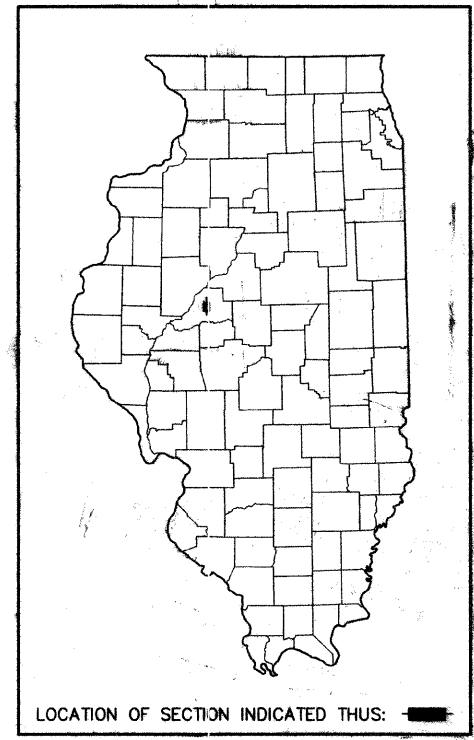
SHEET NO.	DESCRIPTION
1	COVER SHEET
2	SUMMARY OF QUANTITIES AND TYPICAL SECTION
3	PLAN AND PROFILE
4-5	CROSS SECTIONS
6	GENERAL PLAN AND ELEVATION
7	STANDARD CS-3317-40
8	STANDARD CB-3317-36
9	STANDARD CA-3317-10
10	STANDARD CR-TS1
11	STANDARD CN
12	STANDARD CX-1

STATE OF ILLINOIS
DEPARTMENT OF TRANSPORTATION

PLANS FOR PROPOSED
LOCAL AGENCY IMPROVEMENT
HIGHWAY BRIDGE PROGRAM

MASON COUNTY SHERMAN ROAD DISTRICT
EXISTING STRUCTURE NO. 063-3024
PROPOSED STRUCTURE NO. 063-3025
SEC. 05-00016-01-BR
PROJECT NO. BRS-0572(303)
JOB NO. C-96 -215-08

CH 5 (FAS 572) OVER SAMUELS DITCH, TRIBUTARY TO CRANE CREEK



LOCATION OF SECTION INDICATED THUS: [Symbol]

LIST OF HIGHWAY STANDARDS

STD. 280001-04	TEMP. EROS. CONTROL SYSTEM
STD. 635006-02	REFLECTOR AND TERMINAL MARKER PLACEMENT
STD. 635011-01	REFLECTOR MARKER AND MOUNTING DETAILS
STD. 701006-02	OFF ROAD OPERATION - 2 LANE, 2 WAY
STD. 701011-01	OFF ROAD MOVING OPERATION - 2 LANE, 2 WAY
STD. 701301-02	SHORT-TERM LANE CLOSURE - 2 LANE, 2 WAY
STD. 701901	TRAFFIC CONTROL DEVICES
STD. BLR 21-7	TRAFFIC CONTROL DEVICES - LOCAL ROAD
STD. BLR 23-2	TRAFFIC BARRIER TERMINAL, TYPE 1
STD. BLR 26	STEEL PLATE BEAM GUARDRAIL, 27 1/2" HGT.
STD. BLR 27	TRAFFIC BARRIER TERMINAL, TYPE 5A

JOINT UTILITY LOCATING INFORMATION FOR
EXCAVATIONS PHONE 1-800-892-0123

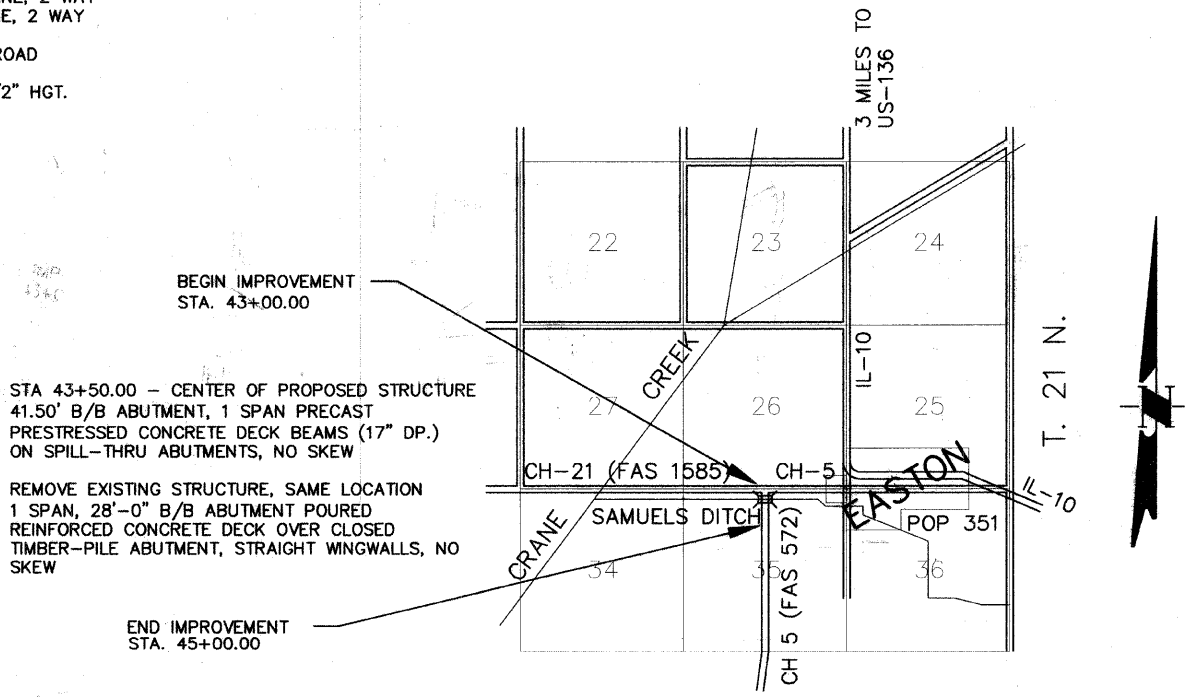
UTILITY COMPANIES

AMERENCIPS	ELECTRIC	BEARDSTOWN, ILLINOIS
CASS TELEPHONE	TELEPHONE	VIRGINIA, ILLINOIS

ROADWAY CLASSIFICATION: COLLECTOR/RURAL
2005 ADT: 375
DESIGN SPEED: 30
DESIGN GUIDELINES: RURAL
VARIANCES GRANTED: NONE
COMMITMENTS: NONE

SCALES

PLAN	0" = 20'
PROFILE HORIZ.	0" = 20'
PROFILE VERT.	0" = 5'
CROSS SECTION HORIZ.	0" = 5'
CROSS SECTION VERT.	0" = 5'



BEGIN IMPROVEMENT STA. 43+00.00
STA 43+50.00 - CENTER OF PROPOSED STRUCTURE
41.50' B/B ABUTMENT, 1 SPAN PRECAST
PRESTRESSED CONCRETE DECK BEAMS (17" DP.)
ON SPILL-THRU ABUTMENTS, NO SKEW
REMOVE EXISTING STRUCTURE, SAME LOCATION
1 SPAN, 28'-0" B/B ABUTMENT POURED
REINFORCED CONCRETE DECK OVER CLOSED
TIMBER-PILE ABUTMENT, STRAIGHT WINGWALLS, NO
SKEW
END IMPROVEMENT STA. 45+00.00

R. 7 W. 3rd P.M.

LOCATION MAP
NO SCALE

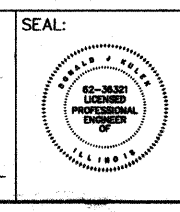
TOTAL AND NET LENGTH OF PROJECT = 200.00 FT. = 0.038 MI.
STRUCTURE LENGTH (BK.-BK. ABUT.) = 41.50 FT.

CONTRACT NO. 93453

APPROVED Jan 23 20 08
[Signature]
MASON COUNTY ENGINEER

APPROVED FEB 15 20 08
[Signature]
DISTRICT ENGINEER OF CONSTRUCTION
APPROVED FEB 15 20 08
[Signature]
DISTRICT ENGINEER OF LOCAL ROADS & STREETS
RELEASING FOR BID BASED ON LIMITED REVIEW
FEB 15 20 08
[Signature]
DEPUTY DIRECTOR OF HIGHWAYS, REGION FOUR ENGINEER
STATE OF ILLINOIS
DEPARTMENT OF TRANSPORTATION

DONALD J. KULEK
LICENSED PROFESSIONAL ENGINEER
STATE OF ILLINOIS NO. 062-36321
LICENSE EXPIRES NOVEMBER 30, 2009
[Signature] 1/17/08
DONALD J. KULEK DATE



PLANS PREPARED BY:
POEPPING, STONE, BACH & ASSOCIATES, INC.
100 SOUTH 54TH STREET
QUINCY, ILLINOIS 62306
PH.: (217) 223-4605
FAX: (217) 223-1546
E-MAIL: PSBA@PSBA.COM
WWW.PSBA.COM