

RTE. NO.	SECTION	COUNTY	TOTAL SHEETS	SHEET NO.
CH 5	*	MASON	12	3

PLAN AND PROFILE

* SEC. 05-00016-01-BR

S.W. 1/4, SEC. 26, T21N-R7W, 3rd P.M.

EXISTING FAS 1585 (CH-21) ±24' SEAL COAT

N. 1/4 CORNER, SECTION 35
HALF SECTION LINE

PI STA 43+00.00 FAS 572 (CH-5) = STA 100+00.00 FAS 1585 (CH-21)

CP-10,002

STA 101+00 CH 21 CENTERLINE EXTENDED EQUALS STATION 42+00 CENTERLINE CH 5

EXISTING FAS 572 (CH-5) 24' SEAL COAT 8' EARTH SHOULDER

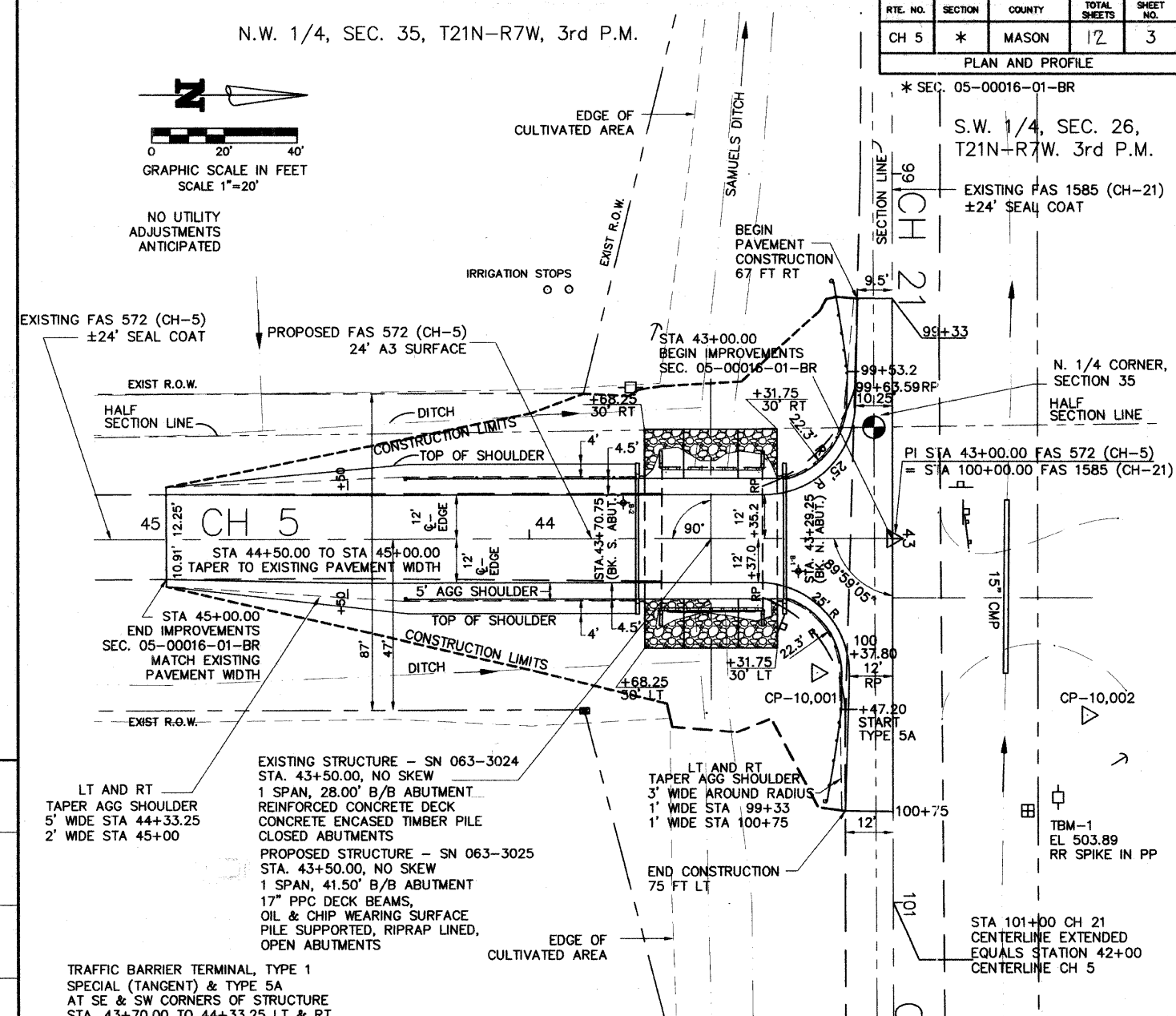
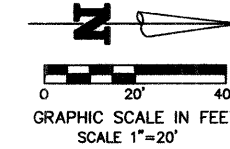
S.E. 1/4, SEC. 26, T21N-R7W, 3rd P.M.

PLAN & PROFILE

CH 5 (FAS 572) OVER SAMUELS DITCH

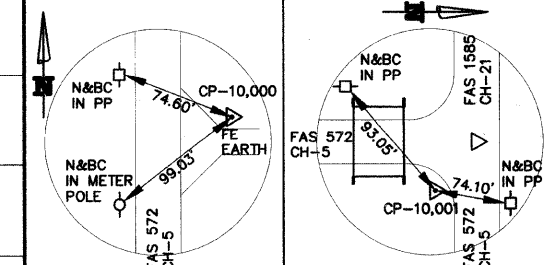
SEC. 05-00016-01-BR
MASON COUNTY
STATION 43+50.00

N.W. 1/4, SEC. 35, T21N-R7W, 3rd P.M.



N.E. 1/4, SEC. 35, T21N-R7W, 3rd P.M.

STA 43+00 N: 1298451.7077 E: 2383360.6715	STA 99+00 N: 1298451.6731 E: 2383260.5506
STA 45+00 N: 1298251.7077 E: 2383360.6715	STA 101+00 N: 1298451.7415 E: 2383460.5506



GUARDRAIL

STA 43+30.00 LT ATTACH TRAFFIC BARRIER TERMINAL, TYPE 5A SPECIAL TO BRIDGE RAILING.
INSTALL TYPE 5A SPECIAL ON SHORT RADIUS TO STA 100+24.50, 18.16 RT (CH 21 STATIONING.)
INSTALL STEEL PLATE BEAM GUARDRAIL, SHORT RADIUS TO STA 100+47.20, 14.16' RT.
INSTALL TRAFFIC BARRIER TERMINAL TYPE 1 FROM STA 100+47.20, 14.16 FT RT TO STA 100+72.20, 18.16 FT RT.

STA 43+30.00 RT ATTACH TRAFFIC BARRIER TERMINAL, TYPE 5A SPECIAL TO BRIDGE RAILING.
INSTALL TYPE 5A SPECIAL ON SHORT RADIUS TO STA 99+76.30, 17.63 RT (CH 21 STATIONING.)
INSTALL STEEL PLATE BEAM GUARDRAIL, SHORT RADIUS TO STA 99+53.20, 12.54' RT.
INSTALL TRAFFIC BARRIER TERMINAL TYPE 1 FROM STA 99+53.20, 12.54 FT RT TO STA 99+28.20, 16.54 FT RT.

STA 44+33.25 RT INSTALL TRAFFIC BARRIER TERMINAL, TYPE 1 SPECIAL (TANGENT) TO STA 43+83.25, 16.50 FT RT.
STA 43+83.25, 16.50 FT RT TO STA 43+70.00, 16.50 FT RT - INSTALL TRAFFIC BARRIER TERMINAL TYPE 5A.
STA 43+70.00, 16.50 FT RT - ATTACH TRAFFIC BARRIER TERMINAL, TYPE 5A TO BRIDGE RAILING.

STA 44+33.25 LT INSTALL TRAFFIC BARRIER TERMINAL, TYPE 1 SPECIAL (TANGENT) TO STA 43+83.25, 16.50 FT LT.
STA 43+83.25, 16.50 FT LT TO STA 43+70.00, 16.50 FT LT - INSTALL TRAFFIC BARRIER TERMINAL TYPE 5A.
STA 43+70.00, 16.50 FT LT - ATTACH TRAFFIC BARRIER TERMINAL, TYPE 5A TO BRIDGE RAILING.

T.B.M. #1 - RAILROAD SPIKE IN POWER POLE STA. 100+71, 44.0' LT, ELEV. - 503.89

