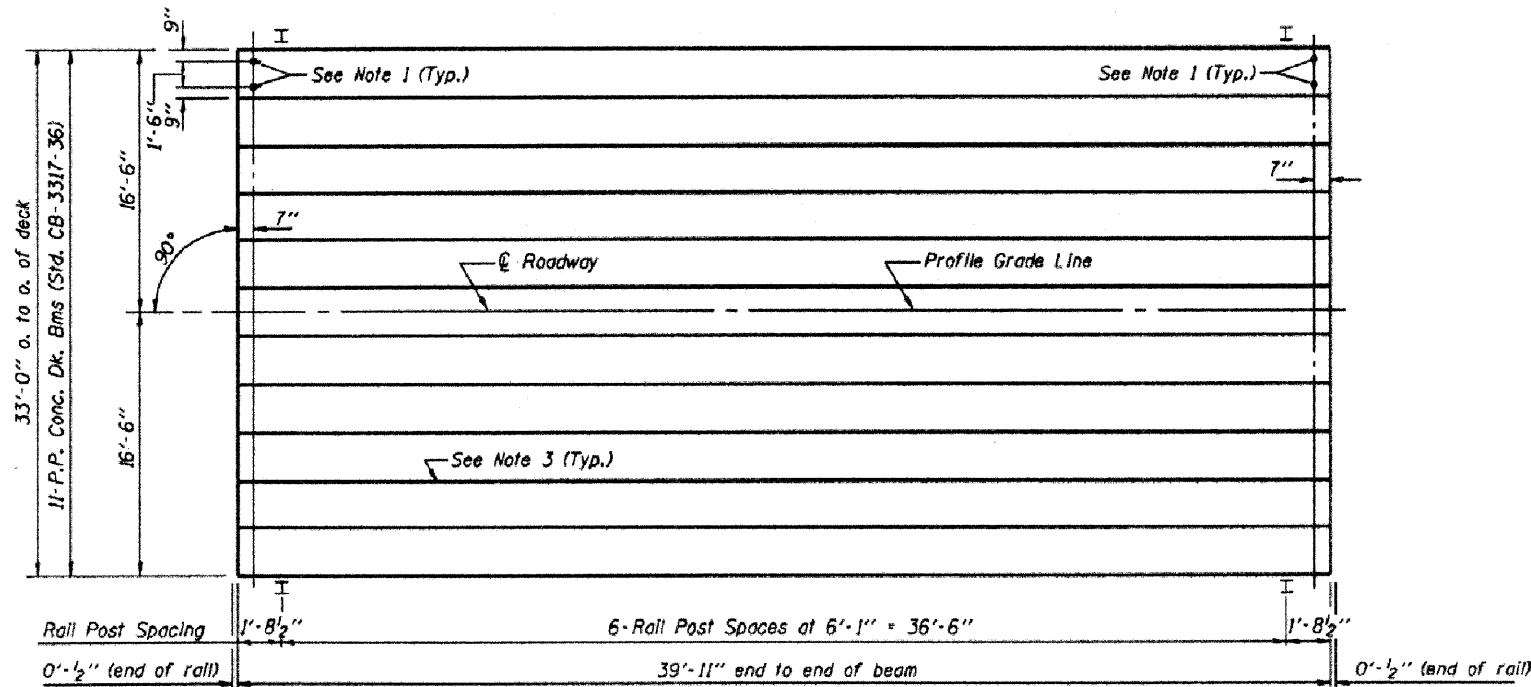


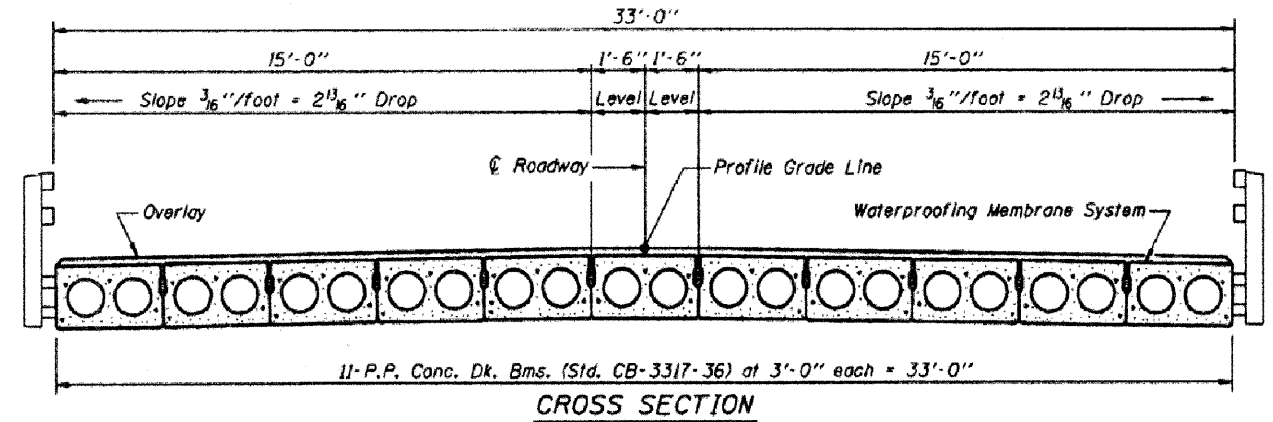
TYPICAL ELEVATIONS



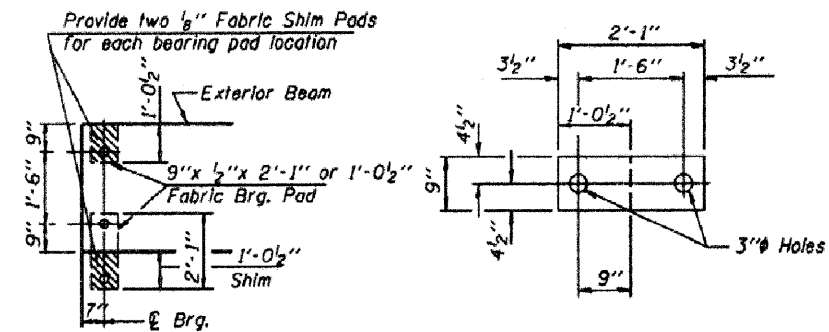
PLAN

NOTES

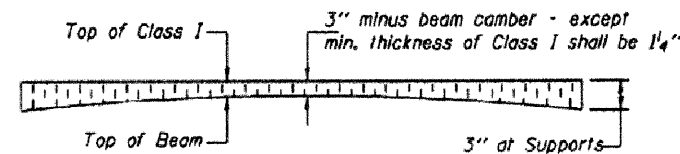
1. After beams have been erected, holes shall be drilled into substructure and anchor dowels placed. Dowel holes shall be filled with non-shrink grout to top of beam and allowed to cure min. 24 hrs. prior to grouting the shear keys.
2. Nominal 1" joint at centerline of pier shall be filled with non-shrink grout.
3. Longitudinal keys shall be grouted.



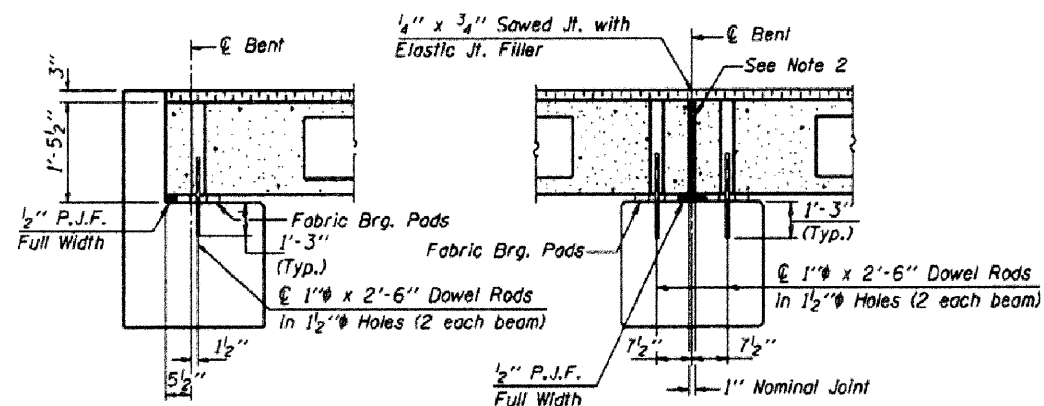
CROSS SECTION



1/2" FABRIC BRG. PAD DETAILS



PROFILE OF OVERLAY



SECTION AT ABUTS.
(Along centerline of Beams)

SECTION AT PIERS
(Along centerline of Beams)

QUANTITIES FOR ONE SPAN

P.P. Conc. Dk. Bm. 17" Dp.	1320 Sq. Ft.
Steel Rolling	80 Ft.
Waterproofing Membrane System	1320 Sq. Ft.
Overlay	20.6 Sq. Ft.

Note: Quantity of overlay for one span = 20.6 Tons

P.P.C. DECK BEAM SUPERSTRUCTURE			
33' RDWY.	17" BMS.	40' SPAN	0° SKEW
STANDARD CS-3317-40			

Illinois Department of Transportation
 PASSED APRIL 4, 2005
 Thomas J. Wonnagatke
 Engineer of Bridge Design
 APPROVED APRIL 4, 2005
 Ralph E. Anderson
 Engineer of Bridges and Structures