

F.A. RTE.	SECTION	COUNTY	TOTAL SHEETS	SHEET NO.
	99-P4003-01-BT	ADAMS	92	1

MULTI-USE TRAIL IMPROVEMENTS ON CEDAR CREEK LINEAR PARK

CEDAR CREEK TRAIL 12TH STREET TO BOB MAYS PARK

QUINCY, ADAMS COUNTY, ILLINOIS

JOB NUMBER C-96-216-08
SECTION 99-P4003-01-BT
PROJECT #HPP-1985(001)

SURFACE TRANSPORTATION / ENHANCEMENT PROGRAM

INDEX OF SHEETS

- 1 COVER SHEET
- 2 STANDARDS, GENERAL NOTES, AND APPLICATION RATES
- 3-6 SUMMARY OF QUANTITIES
- 7 TYPICAL SECTIONS
- 8-11 SCHEDULE OF QUANTITIES
- 12-13 HORIZONTAL CONTROL POINTS
- 14-19 PLAN AND PROFILE - CEDAR CREEK TRAIL
- 20-21 PLAN AND PROFILE - 12TH STREET BYPASS SIDEWALK
- 22-24 PLAN AND PROFILE - MAYS PARK SPUR
- 25-29 STORM WATER POLLUTION PREVENTION PLAN
- 30-34 LANDSCAPING, SIGNAGE, AND STRIPING PLAN
- 35 LIGHTING PLAN
- 36-37 STRUCTURE PLANS - SN 001-7004
- 38-39 STRUCTURE PLANS - SN 001-7005
- 40-45 MISCELLANEOUS DETAILS
- 46-69 CROSS SECTIONS - CEDAR CREEK TRAIL
- 70-72 CROSS SECTIONS - 12TH STREET SPUR
- 73-78 CROSS SECTIONS - 12TH STREET BYPASS SIDEWALK
- 79-92 CROSS SECTIONS - MAYS PARK SPUR

HIGHWAY STANDARDS

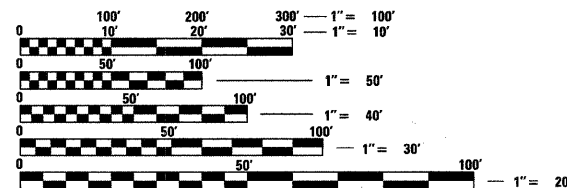
SEE SHEET #2 FOR LIST OF HIGHWAY STANDARDS

DESIGN DESIGNATIONS

CEDAR CREEK TRAIL & SPURS: MULTI-USE PATH
DESIGN SPEED: 20 MPH

PROJECT DESCRIPTION

PROJECT CONSISTS OF CONSTRUCTION OF NEW PEDESTRIAN / BIKE PATH ALONG CEDAR CREEK, INVOLVING HMA PAVEMENT, AGGREGATE SHOULDERS, PCC SIDEWALKS, DRAINAGE STRUCTURES, PREFABRICATED BRIDGES, CONCRETE STRUCTURES, RETAINING WALLS, EROSION CONTROL, SEEDING, PAVEMENT STRIPING, SIGNAGE, AND OTHER MISCELLANEOUS APPURTENANCES.

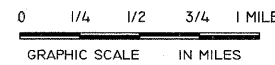
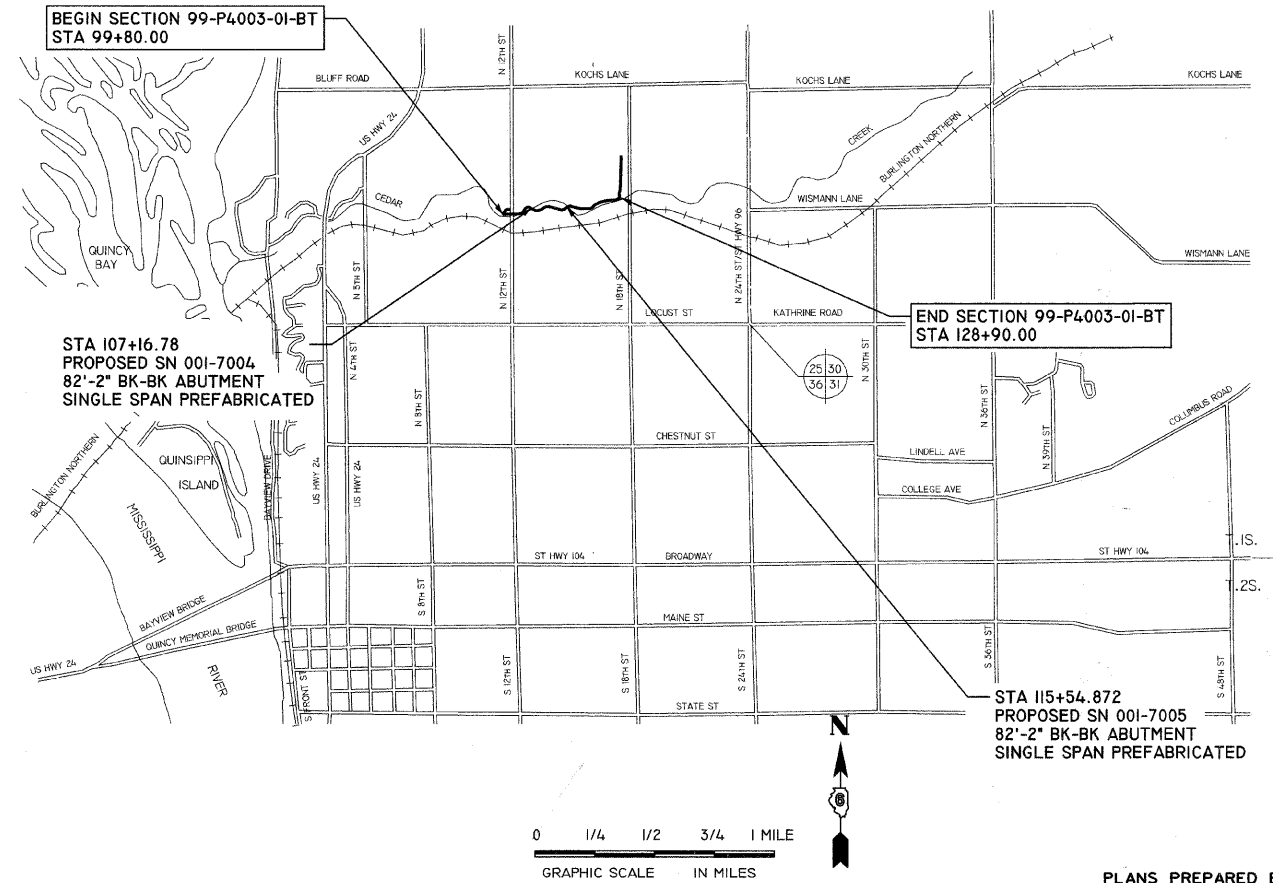


FULL SIZE PLANS HAVE BEEN PREPARED USING STANDARD ENGINEERING SCALES. REDUCED SIZED PLANS WILL NOT CONFORM TO STANDARD SCALES. IN MAKING MEASUREMENTS ON REDUCED PLANS, THE ABOVE SCALES MAY BE USED.

J.U.L.I.E.
JOINT UTILITY LOCATION INFORMATION FOR EXCAVATION
1-800-892-0123



R.9W., 4TH P.M. R.8W., 4TH P.M.

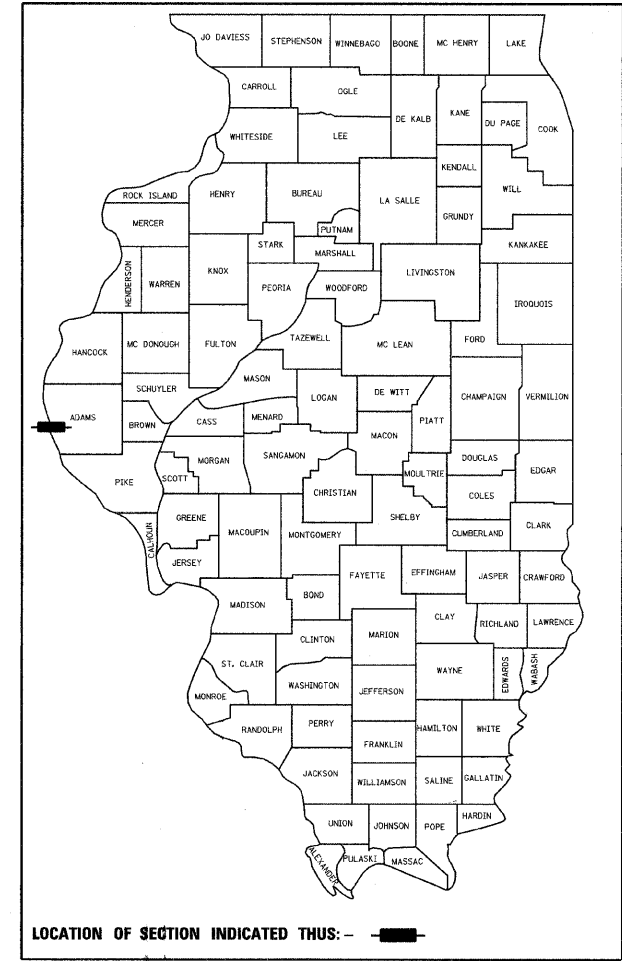


LOCATION MAP

LENGTH OF SECTION 99-P4003-01-BT = 2910.00 FT = 0.551 MILES
12TH STREET SPUR = 219.04 FT = 0.041 MILES
MAYS PARK SPUR = 1447.44 FT = 0.274 MILES
LENGTH OF IMPROVEMENT = 4576.48 FT = 0.867 MILES

PLANS PREPARED BY:
KLINGNER & ASSOCIATES, P.C.

Consulting Engineers
616 North 24th Street
Quincy, Illinois 62301
(217)223-3670 FAX: 223-3603
IL DESIGN FIRM NO.: 1842738



LOCATION OF SECTION INDICATED THUS: - [highlighted area]

APPROVED *Feb. 4th 20 08*
Michael P. [Signature]
EXECUTIVE DIRECTOR, QUINCY PARK DISTRICT

PASSED *2-20 20 08*
Jimmy [Signature]
DISTRICT SIX ENGINEER OF LOCAL ROADS & STREETS

PASSED *2-20-20 08*
W. R. [Signature]
DISTRICT SIX CONSTRUCTION ENGINEER

Releasing For Bid Based on Limited Review *2-20 20 08*
Christina M. [Signature]
DEPUTY DIRECTOR OF HIGHWAYS, REGION FOUR ENGINEER

STATE OF ILLINOIS
DEPARTMENT OF TRANSPORTATION



Steve E. Bange 2/1/2008
STEVE E. BANGE DATE

REGISTERED PROFESSIONAL ENGINEER
STATE OF ILLINOIS NO. 062-053338
LICENSE EXPIRES NOVEMBER 30, 2009

CONTRACT NO. **93454**