

F.A. RTE.	SECTION	COUNTY	TOTAL SHEETS	SHEET NO.
	99-P4003-01-BT	ADAMS	92	23
STA.	TO STA.			

10-STA 66+75.0
 REMOVE AND RELAY PIPE CULVERTS 60", 45"
 USFL = 567.42 (22.3' LT)
 DSFL = 567.10 (22.3' RT)

MAYS PARK SPUR CURVE #4 DATA:
 PI STA = 67+21.03
 $\Delta = 29^\circ 43' 06"$ (LT)
 D = 57' 17" 45"
 R = 100.00'
 T = 26.53'
 L = 51.87'
 E = 3.46'
 PC STA = 66+94.50
 PT STA = 67+46.37

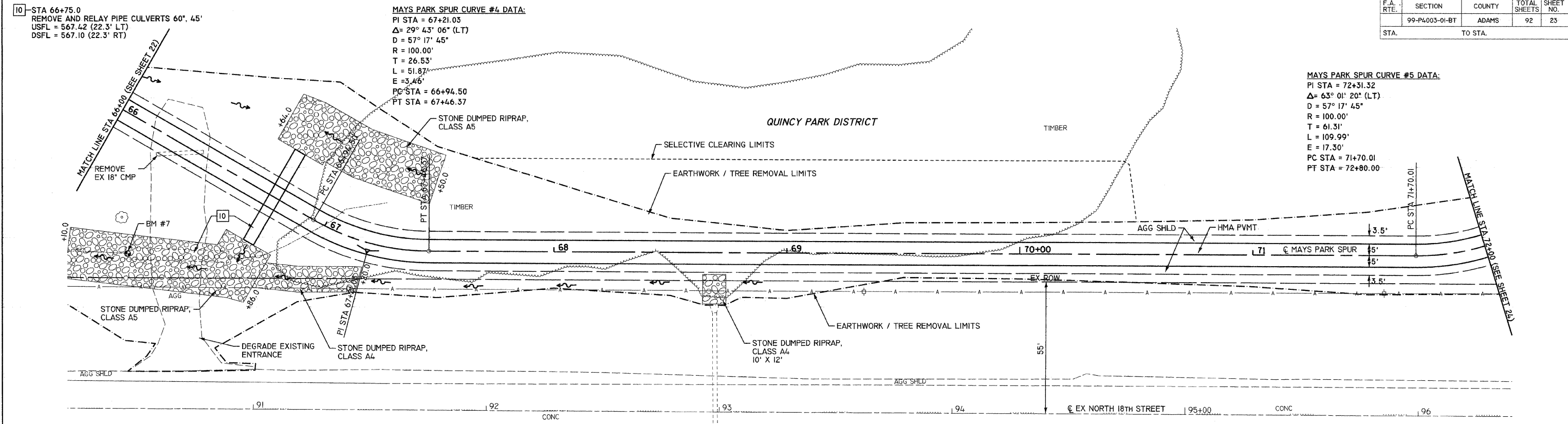
MAYS PARK SPUR CURVE #5 DATA:
 PI STA = 72+31.32
 $\Delta = 63^\circ 01' 20"$ (LT)
 D = 57' 17" 45"
 R = 100.00'
 T = 61.31'
 L = 109.99'
 E = 17.30'
 PC STA = 71+70.01
 PT STA = 72+80.00

DATE	BY

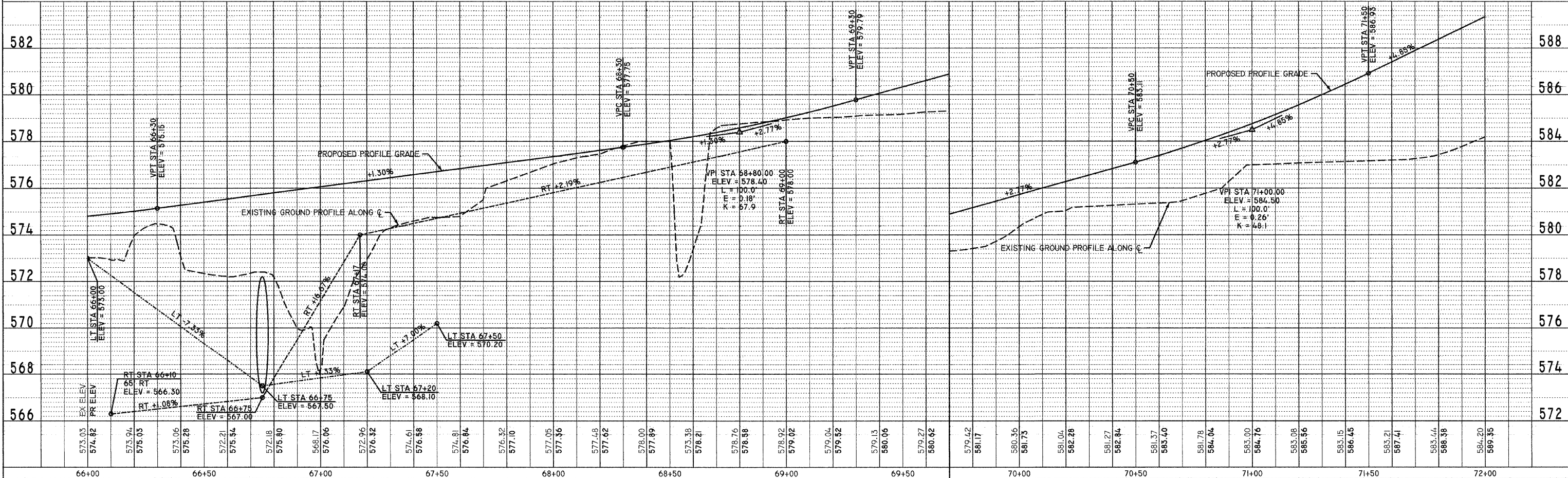
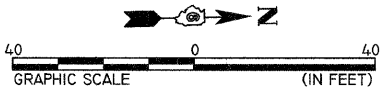
DATE	BY

DATE	BY

PLT DATE = 1/15/2006
 FILE NAME = P:\ADAMS\99-P4003-01-BT\CONSTR_PLANS\23P111_93454.DWG
 PLOT SCALE = 20,000.0 / IN.
 USER NAME = 983



BENCHMARK #7
 CHISLED "+ 2ND RIB S. END OUF CULVERT
 STA 66+33 52" RT
 ELEV = 572.47



MAYS PARK SPUR PLAN & PROFILE - STA 66+00 TO STA 72+00