

F.A. RTE.	SECTION	COUNTY	TOTAL SHEETS	SHEET NO.
	99-P4003-01-BT	ADAMS	92	35
STA.	TO STA.			

GENERAL NOTES

- ELECTRIC SERVICE INSTALLATION SHALL BE 120/240V, 10 WITH 15 AMP CIRCUIT BREAKER, COORDINATE WITH THE UTILITY COMPANY.
- LIGHTING CONTROLLER SHALL BE A PEDESTAL MOUNT ON A CONCRETE FOUNDATION, TYPE A (STD 878001) 24" SQUARE. CIRCULAR FOUNDATION WILL NOT BE ALLOWED. ENCLOSURE SHALL HAVE A SINGLE DOOR.
- LIGHTING CONTROLLER SHALL INCLUDE A 100A, 240V 1 SLOT PANEL WITH MAIN BREAKER, 4-POLE LIGHTING CONTACTOR, PHOTOCELL, INTERNAL RECEPTICAL, AND TIMECLOCK (MILBANK CP3B SERIES OR APPROVED EQUAL). PROVIDE 100A, 240V METERING EQUIPMENT PER UTILITY SPECIFICATIONS. MOUNT METER BASE TO EXTERIOR OF PEDESTAL.
- ALL CONTROLLER SHEET METAL SHALL BE FINISHED WITH ZINC CHROMATE PRIMER AND DARK GREEN BAKED ENAMEL OR POWDER COAT FINISH.
- PHOTOCELL SHALL FACE AWAY FROM 12TH STREET.
- PROVIDE 2 TYPE LB CONDULETS AND LIQUID TIGHT FLEXIBLE CONDUIT AT ABUTMENT TO BEAM CROSSINGS. COST TO BE INCLUDED IN THE PAY ITEM "CONDUIT ATTACHED TO STRUCTURE, 1 1/4" DIA., GALVANIZED STEEL"
- JUNCTION BOXES SHALL BE MOUNTED TO BRIDGE ABUTMENT AND THE BOX COVERS SHALL BE FURNISHED WITH A RETAINING CHAIN AND CAPTIVE SCREWS.

SWITCHING CABINET COMPONENT LEGEND

- A - 100 AMP MAIN BREAKER
- B - 2 POLE, 20 AMP BREAKER
- C - 2 POLE, 80 AMP BREAKER
- D - 2 POLE, 60 AMP BREAKER
- E - 1 POLE, 15 AMP BREAKER
- F - 1 POLE, 20 AMP BREAKER
- G - SURGE PROTECTOR
- H - SELECTOR SWITCH - 3 POSITION
- I - 2 POLE, 100 AMP CONTACTOR
- J - BREAKER (FUTURE)

CABLE LOCATION SUMMARY

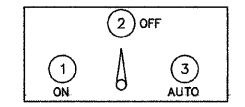
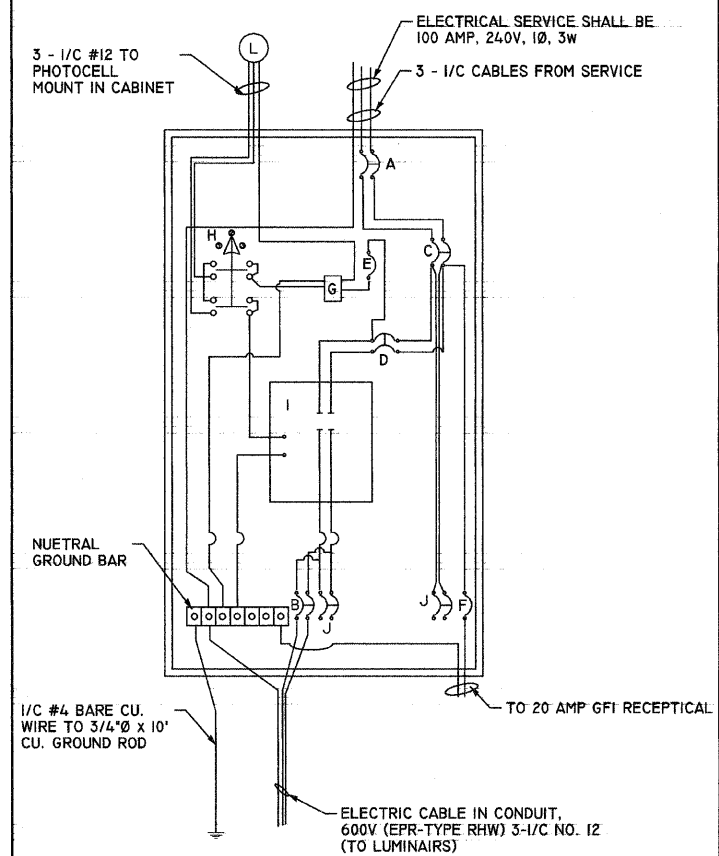
RUN	#8 3-1/C
PP - CONTROLLER	25
CONTROLLER - JBI	70
JBI - LI	45
JBI - JB2	20
JB2 - L2	45
JB2 - JB3	20
JB3 - L3	45
TOTALS:	270

CONDUIT LOCATION SUMMARY

RUN	1 1/4" GALV TRENCH	1 1/4" GALV STRUCTURE	TRENCH & BACKFILL
PP - CONTROLLER	5		5
CONTROLLER - JBI	55	5	55
JBI - LI		35	
JBI - JB2		15	
JB2 - L2		35	
JB2 - JB3		15	
JB3 - L3		35	
TOTALS:	60	140	60

ELECTRICAL QUANTITIES

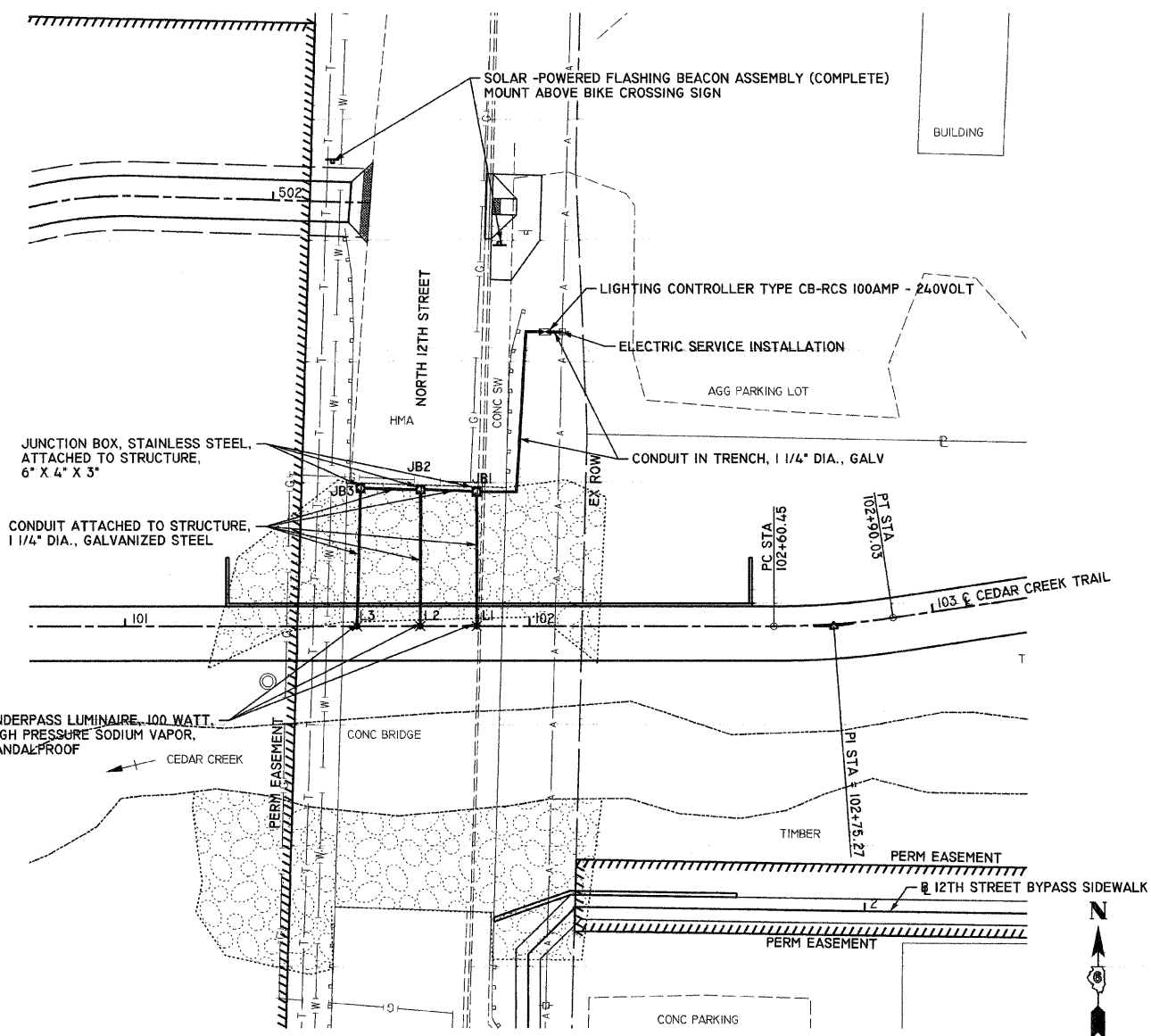
CODE #	DESCRIPTION	UNIT	QUANTITY
80400100	ELECTRIC SERVICE INSTALLATION	EACH	1
81000400	CONDUIT IN TRENCH, 1 1/4" DIA., GALVANIZED STEEL	FOOT	60
81000400	CONDUIT ATTACHED TO STRUCTURE, 1 1/4" DIA., GALVANIZED STEEL	FOOT	140
81300200	JUNCTION BOX, STAINLESS STEEL, ATTACHED TO STRUCTURE, 6" X 4" X 3"	EACH	3
81700325	ELECTRIC CABLE IN CONDUIT, 600V (EPR-TYPE RHW) 3-1/C NO. 8	FOOT	270
81900200	TRENCH AND BACKFILL FOR ELECTRICAL WORK	FOOT	60
82500530	LIGHTING CONTROLLER TYPE CB-RCS 100AMP - 240VOLT	EACH	1
87800100	CONCRETE FOUNDATION, TYPE A	FOOT	3
XX005938	SOLAR -POWERED FLASHING BEACON ASSEMBLY (COMPLETE)	EACH	2
	UNDERPASS LUMINAIRE, 100 WATT, HIGH PRESSURE SODIUM VAPOR, VANDALPROOF	EACH	3



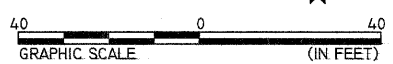
LIGHTING CONTROLLER (CONTACTOR AND SWITCHING PANEL) DETAIL

REVISIONS	
NAME	DATE

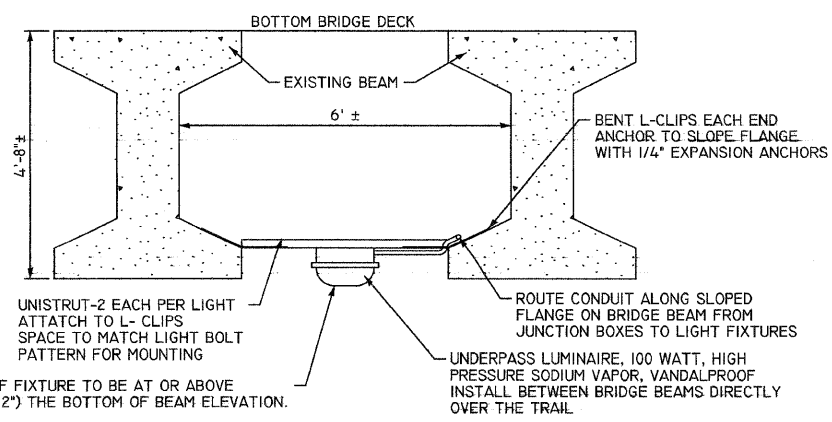
LIGHTING PLAN
12TH STREET BRIDGE
 99-P4003-01-BT
 QUINCY PARK DISTRICT, ADAMS COUNTY
 SCALE: VERT. 1"=20'
 HORIZ. 1"=20'
 DATE 2/1/2008
 DRAWN BY SEB
 CHECKED BY DCD



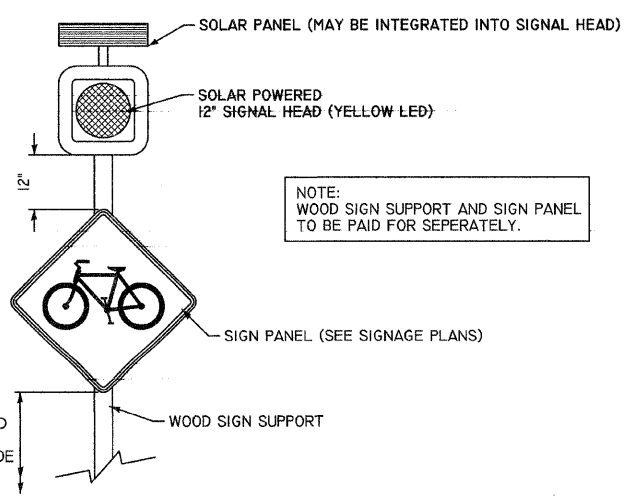
ELECTRICAL PLAN



NOTE: CONTRACTOR TO FIELD VERIFY BRIDGE BEAM DIMENSIONS AND FABRICATE UNISTRUT AND MOUNTING APPURTENANCES ACCORDINGLY. COST TO BE INCLUDED IN THE PAY ITEM FOR "UNDERPASS LUMINAIRE, 100 WATT, HIGH PRESSURE SODIUM VAPOR, VANDALPROOF"



UNDERPASS LUMINAIRE DETAIL



SOLAR -POWERED FLASHING BEACON ASSEMBLY (COMPLETE)

PLOT DATE: 2/1/2008
 FILE NAME: P:\GALILEO\2010\9201-13\CONSTR\PLANS\02SEL_91-301-13.dwg
 PLOT SCALE: 1"=20'
 USER NAME: J. J. J.