

SECTION	COUNTY	TOTAL SHEETS	SHEET NO.
04-00111-01-FP	WAYNE	21	1
FAS ROUTE 2817			
ILLINOIS PROJECT SR-2817(102)			
CONTRACT NO. 95416			

INDEX OF SHEETS

SHEET NO.	DESCRIPTION
1	COVER SHEET
2	GENERAL NOTES, AND DETAILS
3	SCHEDULES
4-6	PLAN SHEETS
7-19	CROSS SECTIONS
20-21	STORM WATER POLLUTION PREVENTION PLAN

THE FOLLOWING STANDARDS ARE A PART OF THESE PLANS AND ARE INCLUDED AFTER SHEET NO. 21.

000001-05	STANDARD SYMBOLS, ABBREVIATIONS, AND PATTERNS
280001-04	TEMPORARY EROSION CONTROL SYSTEMS
542306-01	PRECAST REINFORCED CONCRETE ELLIPTICAL FLARED END SECTION
666001	RIGHT OF WAY MARKERS
701006-02	TYPICAL APPLICATION OF TRAFFIC CONTROL DEVICES
701201-02	TYPICAL APPLICATION OF TRAFFIC CONTROL DEVICES
701301-02	TYPICAL APPLICATION OF TRAFFIC CONTROL DEVICES
701901	TRAFFIC CONTROL DEVICES
BLR 21-7	TYPICAL APPLICATION OF TRAFFIC CONTROL DEVICES
BLR 22-5	TYPICAL APPLICATION OF TRAFFIC CONTROL DEVICES

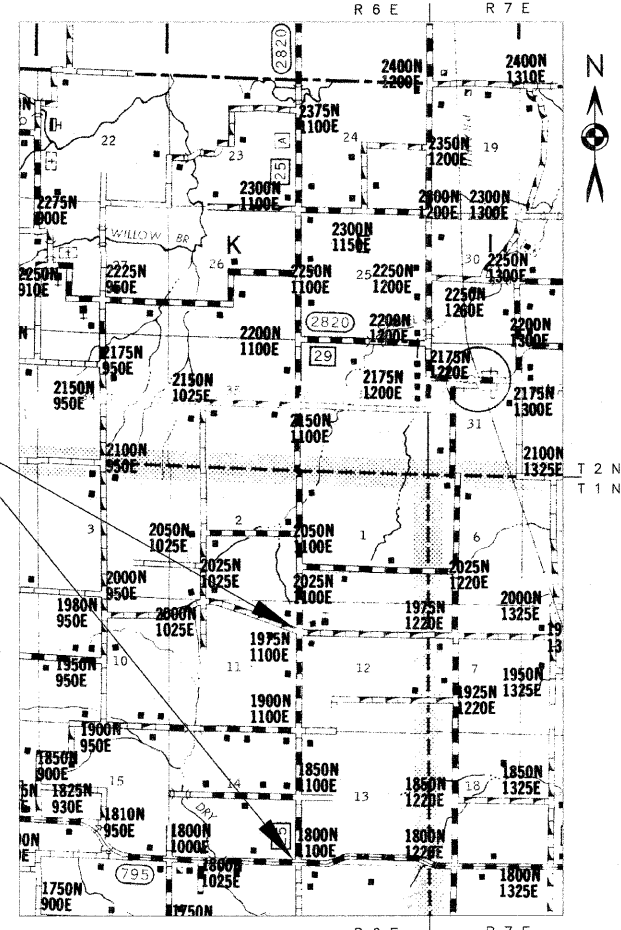
STATE OF ILLINOIS
DEPARTMENT OF TRANSPORTATION
PLANS FOR
PROPOSED LOCAL AGENCY IMPROVEMENT
FEDERAL-AID SECONDARY PROJECT

F. A. S. ROUTE 2817
SECTION 04-00111-01-FP
WAYNE COUNTY PROJECT SR-2817(102)
C-97-059-04

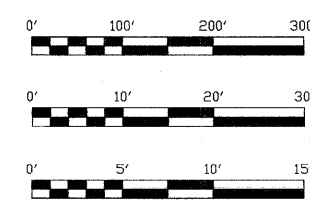
SUMMARY OF QUANTITIES

QUANTITY	UNIT	ITEM	CODE NO.
132.00	CU YD	CONTROLLED LOW-STRENGTH MATERIAL	59300100
292.00	UNIT	TREE REMOVAL (6 TO 15 UNITS DIAMETER)	20100110
408.00	UNIT	TREE REMOVAL (OVER 15 UNITS DIAMETER)	20100210
1.73	ACRE	TREE REMOVAL, ACRES	20100500
20869.00	CU YD	EARTH EXCAVATION	20200100
12.68	ACRE	SEEDING, CLASS 2 (SPECIAL)	25001000
54.00	EACH	TEMPORARY DITCH CHECKS	28000300
17.00	EACH	INLET AND PIPE PROTECTION	28000500
113.00	TON	STONE DUMPED RIPRAP, CLASS A4	28100807
150.00	SQ YD	FILTER FABRIC	28200200
25,610.00	SQ YD	PROCESSING SOIL-CEMENT BASE COURSE 8"	35200300
14,342.00	100 WT	CEMENT	35200500
5185.00	TON	AGGREGATE SURFACE COURSE, TYPE B	40200800
200.00	GALLON	BITUMINOUS MATERIALS (PRIME COAT)	40300100
11,525.00	GALLON	BITUMINOUS MATERIALS (COVER AND SEAL COATS)	40300300
321.00	TON	COVER COAT AGGREGATE	40300500
321.00	TON	SEAL COAT AGGREGATE	40300600
108.00	FOOT	PIPE CULVERTS, TYPE 1 RCCP 18"	54200433
338.00	FOOT	PIPE CULVERTS, TYPE 1, CORRUGATED STEEL OR ALUMINUM CULVERT PIPE 15"	54200640
324.00	FOOT	PIPE CULVERTS, TYPE 1, CORRUGATED STEEL OR ALUMINUM CULVERT PIPE 18"	54200643
280.00	FOOT	PIPE CULVERTS, TYPE 1, REINFORCED CONCRETE-ELLIPTICAL, EQUIVALENT ROUND-SIZE 30"	54207165
56.00	FOOT	PIPE CULVERTS, TYPE 1, REINFORCED CONCRETE-ELLIPTICAL, EQUIVALENT ROUND-SIZE 36"	54207171
48.00	FOOT	PIPE CULVERTS, TYPE 2, REINFORCED CONCRETE-ELLIPTICAL, EQUIVALENT ROUND-SIZE 36"	54209901
12.00	EACH	PRECAST REINFORCED CONCRETE END SECTIONS, EQUIVALENT ROUND-SIZE 30"	54214515
2.00	EACH	PRECAST REINFORCED CONCRETE END SECTIONS, EQUIVALENT ROUND-SIZE 36"	54214521
45.00	EACH	FURNISHING AND ERECTING RIGHT-OF-WAY MARKERS	66600105
4.00	CAL MO	ENGINEER'S FIELD LABORATORY	67000600
1.00	L SUM	MOBILIZATION	67100100
1.00	L SUM	TRAFFIC CONTROL AND PROTECTION, STANDARD 701201	70100450
1.00	L SUM	TRAFFIC CONTROL AND PROTECTION, STANDARD BLR 21	70101830*
1.00	L SUM	TRAFFIC CONTROL AND PROTECTION, STANDARD BLR 22	70101835*

SECTION 04-00111-01-FP
ENDS STA. 94+50
BEGINS STA. 0+11



SCALES



GROSS LENGTH	9,439 FEET	1.79 MILES
OMISSIONS	0 FEET	0.00 MILES
NET LENGTH	9,439 FEET	1.79 MILES

BEFORE DIGGING IN ILLINOIS
...CALL JULIE FIRST AT 1-800-892-0123

WESTERN WAYNE WATER DISTRICT
CONTACT: ROGER JOHNSON
1-618-895-2813 (OFFICE)
838-3655 (CELL)
838-9511 (PAGER)

WABASH TELEPHONE COOP., INC.
CONTACT: JEFF WILLIAMS
1-618-665-3311 (OFFICE)
1-618-665-4188 (FAX)

WAYNE / WHITE ELECTRIC
CONTACT: AARON HAWLEY
1-618-842-2196

PLAN & PROFILE
HORIZONTAL

PROFILE
VERTICAL

CROSS
SECTION

FUNCTIONAL CLASS:

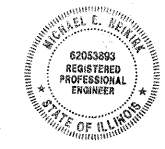
MAJOR COLLECTOR - RURAL
ADT = 1000
DESIGN SPEED = 50 MPH

CONTRACT NO. 95416

PLANS PREPARED BY:



Michael E. Leinik
ILL. REG. PROF. ENGINEER



062-053893
REG. NO. DATE
EXPIRES: 11-30-2009

APPROVED 2-20 20 08
Arthur J. Puchak
COUNTY ENGINEER

PASSED 2-21 20 08
Manuel E. Kavel
DISTRICT SEVEN ENGINEER OF
LOCAL ROADS & STREETS

Releasing For
Bid Based on
Limited Review 2-21 20 08
Christina M. Reed
DEPUTY DIRECTOR OF HIGHWAYS,
REGION FOUR ENGINEER
STATE OF ILLINOIS
DEPARTMENT OF TRANSPORTATION