

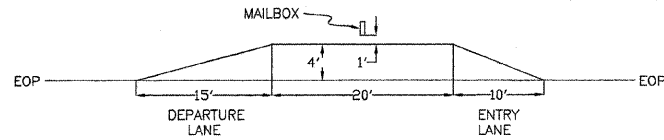
GENERAL NOTES

THIS SECTION CONSISTS OF THE CONSTRUCTION OF AN IMPROVED ROADBED 32 FEET SHOULDER TO SHOULDER IN WIDTH, ALONG WITH THE NECESSARY DRAINAGE STRUCTURES, ALSO CONSTRUCTING A 24 FOOT WIDE 8 INCH THICK SOIL-CEMENT BASE COURSE, AND A 24 FOOT WIDE CLASS A-2 BITUMINOUS SURFACE TREATMENT ALONG THE ENTIRE LENGTH OF THE PROJECT. ALL OF THE WORK REQUIRED BY THIS PROJECT SHALL BE IN ACCORDANCE WITH THE PLANS, SPECIAL PROVISIONS, AND "STANDARD SPECIFICATIONS FOR ROAD AND BRIDGE CONSTRUCTION" ADOPTED JANUARY 1, 2007.

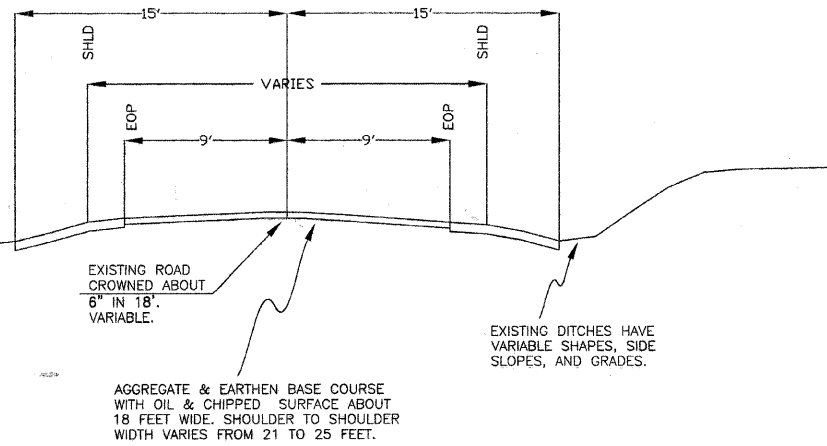
SECTION	COUNTY	TOTAL SHEETS	SHEET NO.
02-00111-00-FP	WAYNE	21	2
FAS ROUTE 2817			
ILLINOIS PROJECT SR-2817(101)			
CONTRACT NO. 95416			

MAILBOX TURNOUT DETAIL

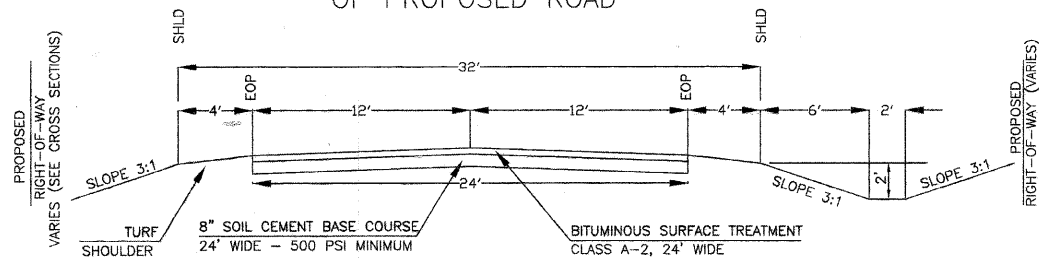
3 TONS AGGREGATE SURFACE COURSE, TYPE B REQUIRED FOR EACH LOCATION OF MAILBOX TURNOUTS TO BE STAKED BY ENGINEER (3 REQUIRED)



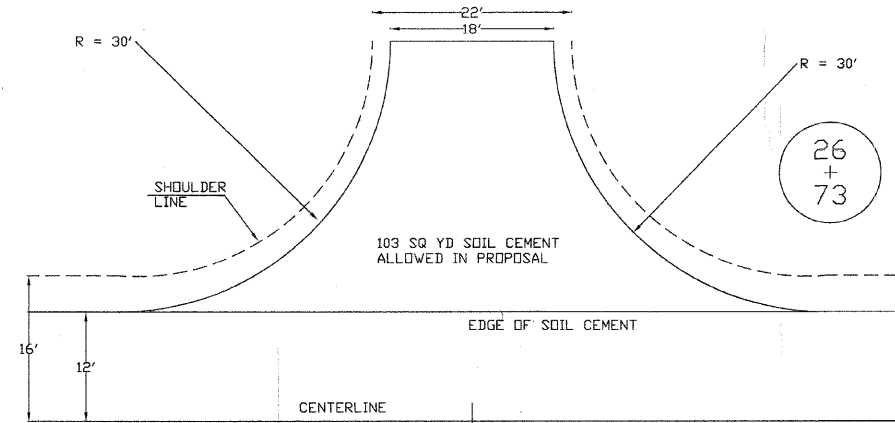
STA. 0+11 TO STA. 94+50 TYPICAL CROSS SECTION OF EXISTING ROAD



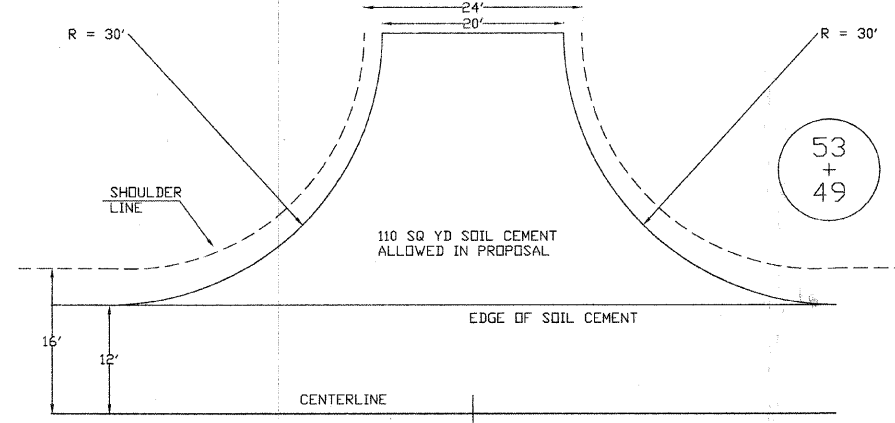
STA. 0+11 TO STA. 94+50 TYPICAL CROSS SECTION OF PROPOSED ROAD



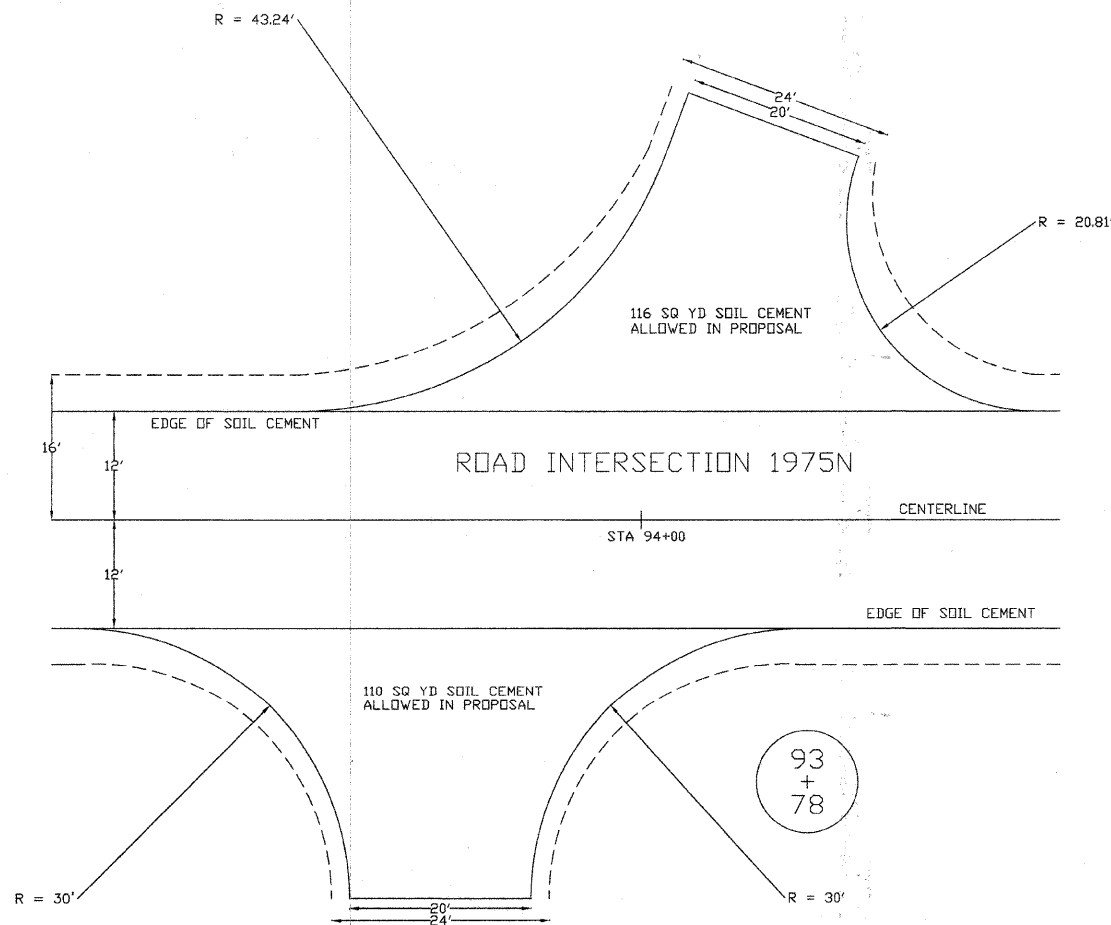
ROAD INTERSECTION 1850N



ROAD INTERSECTION 1900N



ROAD INTERSECTION 1975N



TYPICAL FIELD ENTRANCE

