

INDEX OF SHEETS

SHEET NO.	CONTENTS
1	COVER SHEET
2	PLAN AND PROFILE (TR318)
3	PLAN AND PROFILE (TR3)
4	GENERAL PLAN AND ELEVATION
5	SUPERSTRUCTURE DETAILS
6	ABUTMENT DETAILS
7	RAIL DETAILS
8	SOIL BORINGS
9-10	ROADWAY CROSS SECTIONS (TR318)
11-12	ROADWAY CROSS SECTION (TR3)
13	EROSION CONTROL PLAN

STANDARDS

STD. NO.	DESCRIPTION
280001-04	TEMPORARY EROSION CONTROL SYSTEMS
515001-02	NAME PLATE FOR BRIDGES
701901	TYPICAL APPLICATION OF TRAFFIC CONTROL DEVICES
BLR 21-7	TRAFFIC CONTROL
BLR 22-5	TRAFFIC CONTROL

STATE OF ILLINOIS
**PLANS FOR THE PROPOSED
HIGHWAY BRIDGE PROGRAM**

PROJECT NO. BROS-029 (281)
JOB NO. C-97-032-08

TR 318 OVER HOG BRANCH CREEK
SECTION 06-03123-00-BR
EAST OAKLAND TOWNSHIP
COLES COUNTY

SUMMARY OF QUANTITIES

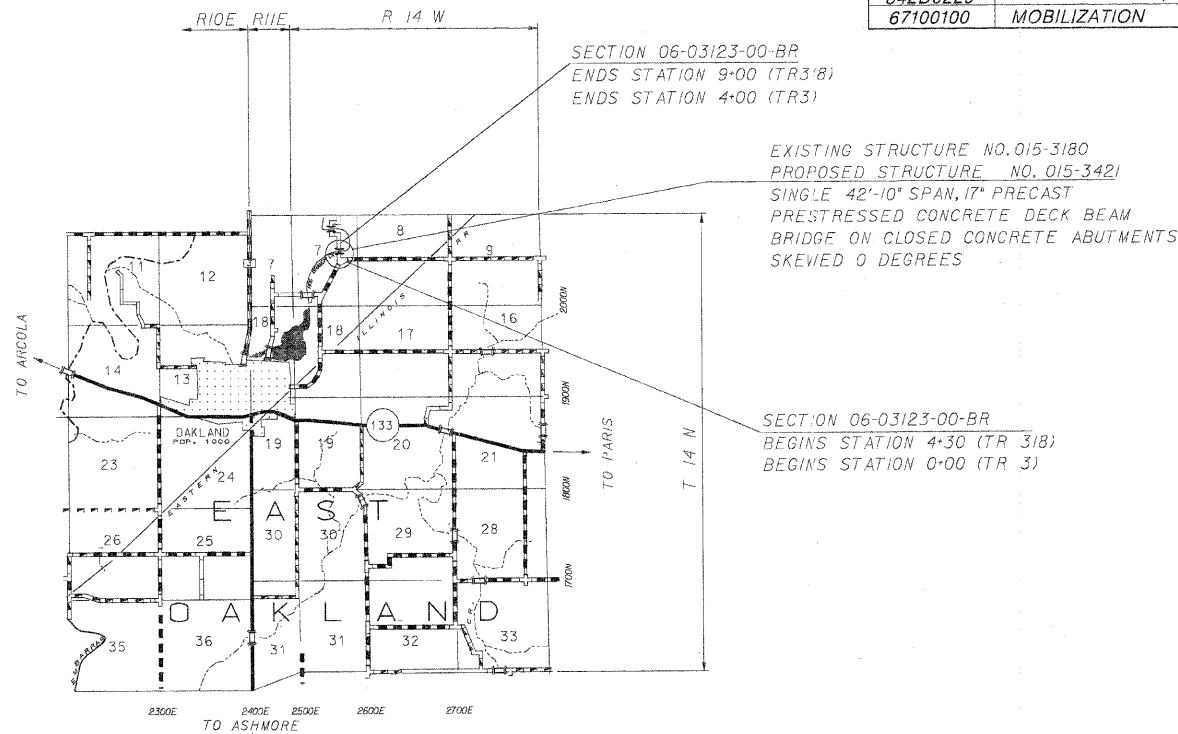
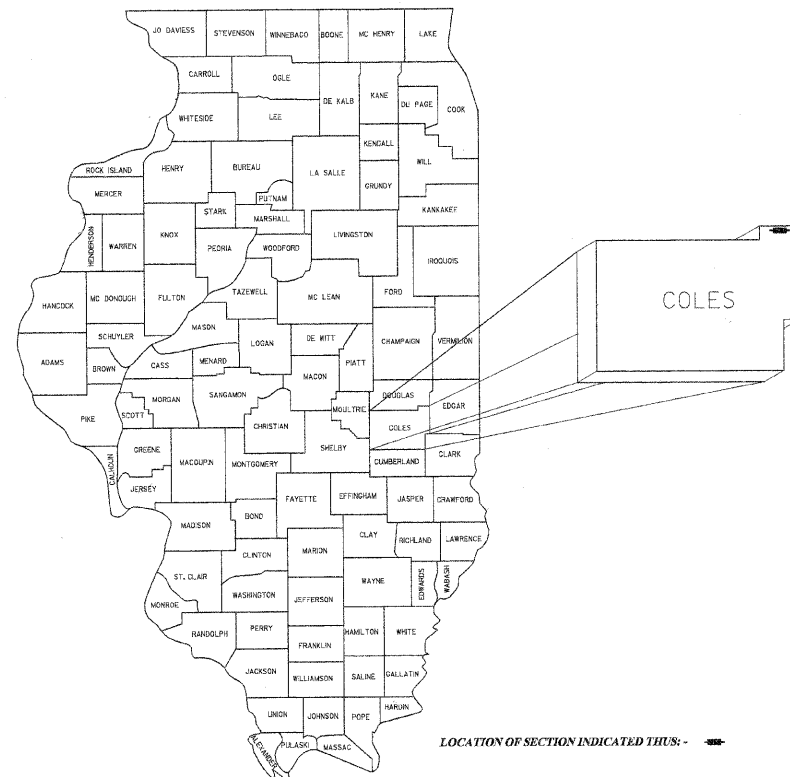
ITEM NO.	ITEMS	UNIT	QUANTITY
20200100	EARTH EXCAVATION	CU.YD.	127
20300100	CHANNEL EXCAVATION	CU.YD.	175.0
20400800	FURNISHED EXCAVATION	CU.YD.	540
25001000	SEEDING, CLASS 2 (SPECIAL)	ACRE	0.35
28000300	TEMPORARY DITCH CHECKS	EACH	5
28000400	PERIMETER EROSION BARRIER	FOOT	1267
28100807	STONE DUMPED RIPRAP, CLASS A4	TON	50.0
40200800	AGGREGATE SURFACE COURSE, TYPE B	TON	900.0
50100100	REMOVAL OF EXISTING STRUCTURES	EACH	1
50200300	COFFERDAM EXCAVATION	CU.YD.	817
50200500	COFFERDAMS	EACH	2
50300225	CONCRETE STRUCTURES	CU.YD.	92.6
50400305	PRECAST PRESTRESSED CONCRETE DECK BEAMS (17" DEPTH)	SQ.FT.	1232.0
50800105	REINFORCEMENT BARS	POUND	4950
50900205	STEEL RAILING, TYPE S1	FOOT	92.0
51201400	FURNISHING STEEL PILES HP 10X42	FOOT	1392
51202305	DRIVING PILES	FOOT	1392
51203400	TEST PILE STEEL HP 10X42	EACH	1
51500100	NAME PLATES	EACH	1
542D0220	PIPE CULVERTS, CLASS D, TYPE 1 15"	FOOT	35
542D0229	PIPE CULVERTS, CLASS D, TYPE 1 24"	FOOT	82
67100100	MOBILIZATION	EACH	1

UTILITY COMPANIES

**ILLINOIS CONSOLIDATED
2116 S. 17TH STREET
MATTOON, ILLINOIS, 61938
MR. WES CHAMBERS
1-800-553-9981

**COLES MOULTRIE ELECTRIC
P.O. BOX 709
MATTOON, ILLINOIS, 61938
MR. STEVE UNDERWOOD
1-888-661-2632

TOLL FREE JOINT UTILITY
LOCATING INFORMATION
FOR EXCAVATORS (J.U.L.I.E.)
TELEPHONE # 1-800-892-0123



LOCATION MAP

SCALE 1 INCH = 1 MILE
NET LENGTH OF SECTION = 470 FEET (0.089 MILES) TR 318
NET LENGTH OF SECTION = 400 FEET (0.075 MILES) TR 3
870 FEET (0.165 MILES)

FUNCTIONAL CLASSIFICATION: LOCAL ROAD ADT LESS THAN 150
DESIGN SPEED = 30 MPH



I HEREBY CERTIFY THAT THESE PLANS WERE PREPARED BY ME OR UNDER MY DIRECT SUPERVISION, AND THAT I AM A DULY LICENSED STRUCTURAL AND PROFESSIONAL ENGINEER UNDER THE LAWS OF THE STATE OF ILLINOIS.

Robert L. McClintock DATE: 12-14-07

ROBERT L. McCLINTOCK
P.E. LICENSE EXP. 11-30-08 P.E. #24158
S.E. LICENSE EXP. 11-30-08 S.E. # 3137

APPROVED DECEMBER 18 2007
Robert L. McClintock
COUNTY ENGINEER

APPROVED December 18 2007
Randall Stucke
ROAD COMMISSIONER

PASSED 1-02 2008
Maurice Koal
DISTRICT SEVEN ENGINEER OF LOCAL ROADS & STREETS

RELEASING FOR BID BASED ON LIMITED REVIEW 1-02 2008
Christie M. Reed
DEPUTY DIRECTOR OF HIGHWAYS REGION FOUR ENGINEER

STATE OF ILLINOIS
DEPARTMENT OF TRANSPORTATION

McCLINTOCK
CIVIL ENGINEERING SERVICE
404 SHAW AVENUE, PARIS, IL 61944
PHONE (317) 466-8110

DRN SDE DATE 3/23/07 SHEET 1 OF 13
REV. 12/10/07 SCALE: NTS
APPR.

JOB NO. 3137-729-06