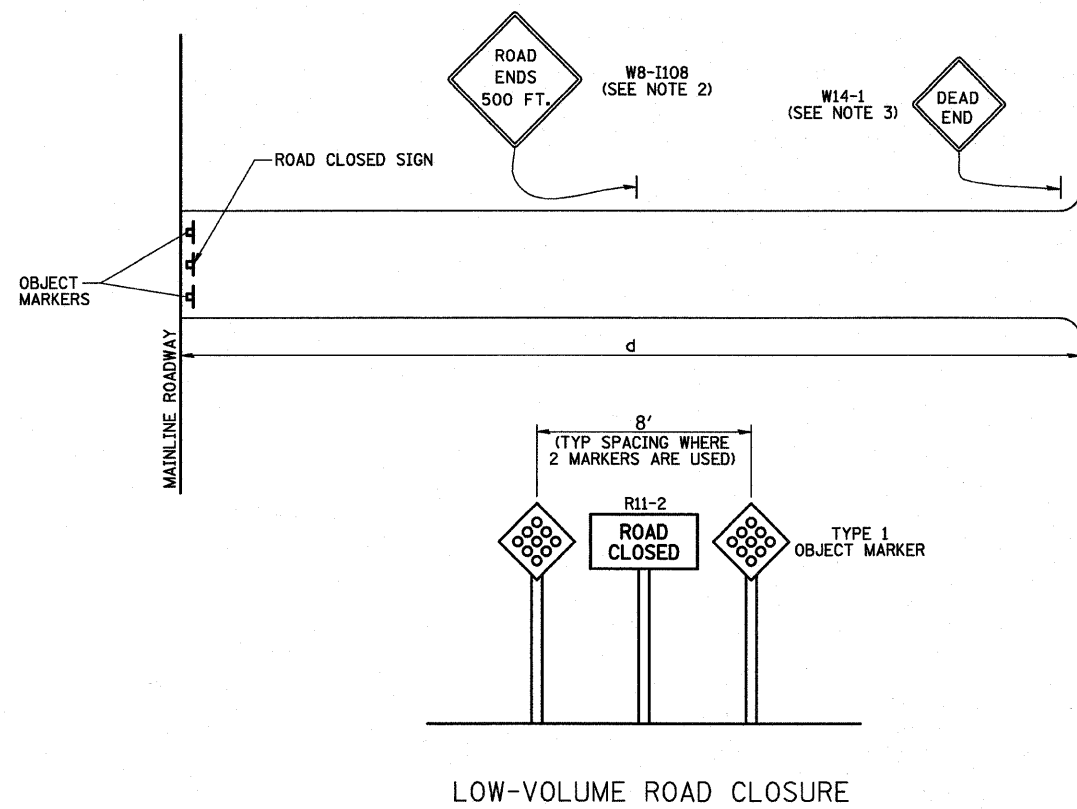
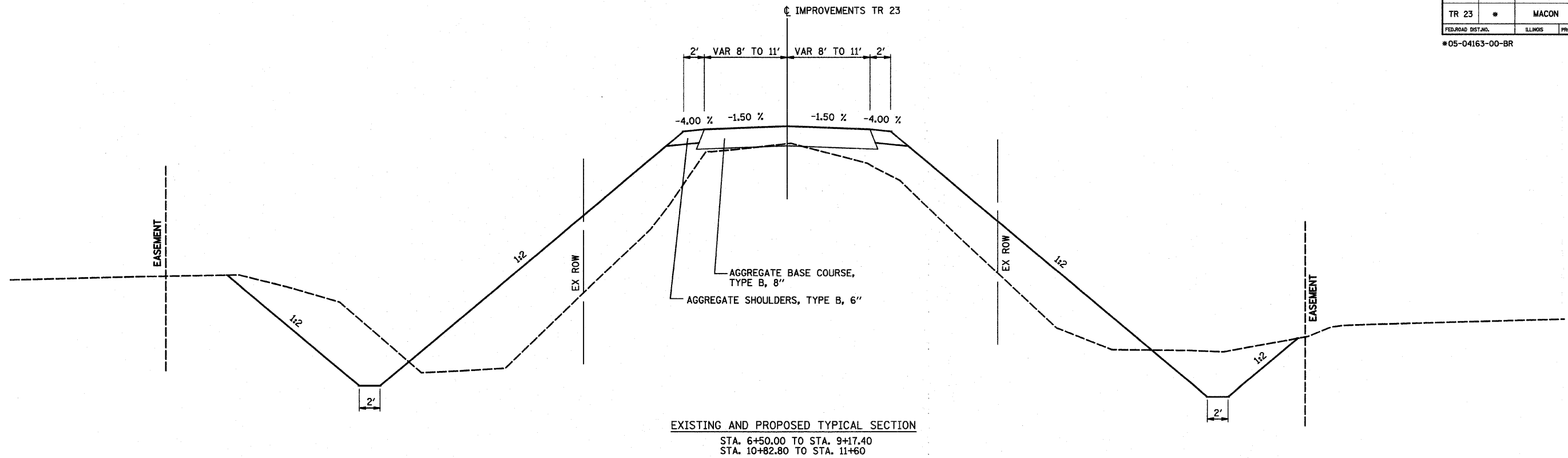


ROUTE NO.	SECTION	COUNTY	TOTAL SHEETS	SHEET NO.
TR 23	*	MACON	22	3
FED. ROAD DIST. NO.		ILLINOIS	PROJECT	

*05-04163-00-BR



NOTES:

1. THE MARKERS FOR THE END OF THE ROADWAY SHALL CONFORM WITH SECTION 3C-4 OF THE MUTCD. THE MARKERS AND SIGN SHOULD BE PLACED AT A MOUNTING HEIGHT OF 5 FT MIN.
2. THE "ROAD ENDS 500 FT" SIGN (W8-1108) SHOULD BE USED WHERE "d" EXCEEDS 1500 FT OR WHERE SIGHT DISTANCE TO THE CLOSURE IS LESS THAN 500 FT.
3. THE "DEAD END" SIGN (W14-1) SHOULD BE USED IN ALL CASES EXCEPT WHERE THE CLOSURE POINT IS VISIBLE FROM THE CROSSROAD.

REFER TO STANDARDS 720011, 729001 FOR SIGNING DETAILS

REVISIONS		SECTION 05-04163-00-BR TR 23 OVER FRIENDS CREEK		DRAWN BY	DATE
1		MACON	COUNTY	DLB	07/06
2				CHECKED BY	DATE
3				GLF	07/06
4				BOOK NUMBER	314
5				PROJECT NO.	5129
6				SHEET NO.	
7					
8					
9					
10					

HOMER L. CHASTAIN & ASSOCIATES, LLP
 CONSULTING ENGINEERS
 184-001297
 DECATUR CHICAGO
 (317) 422-8544 (773) 714-0050
 ROCKFORD
 (815) 489-0050