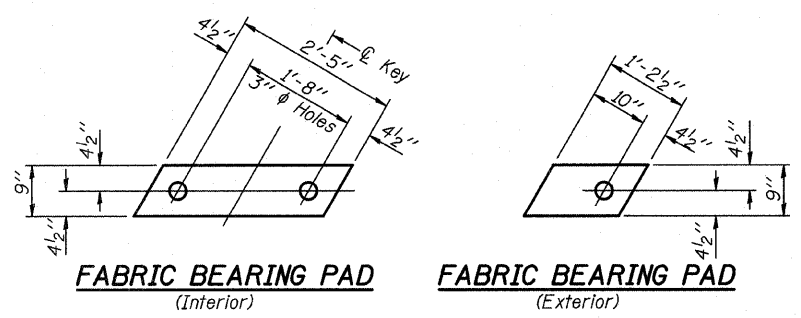
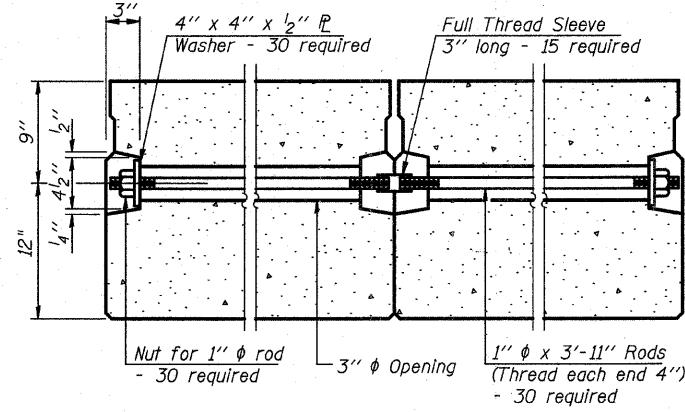
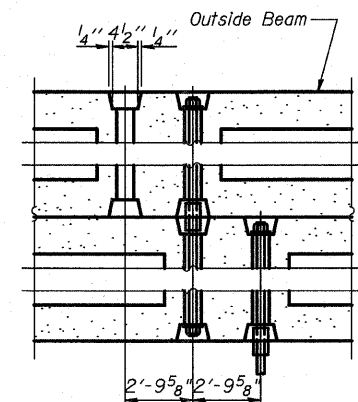


Sheet No. 2
of 7 Sheets

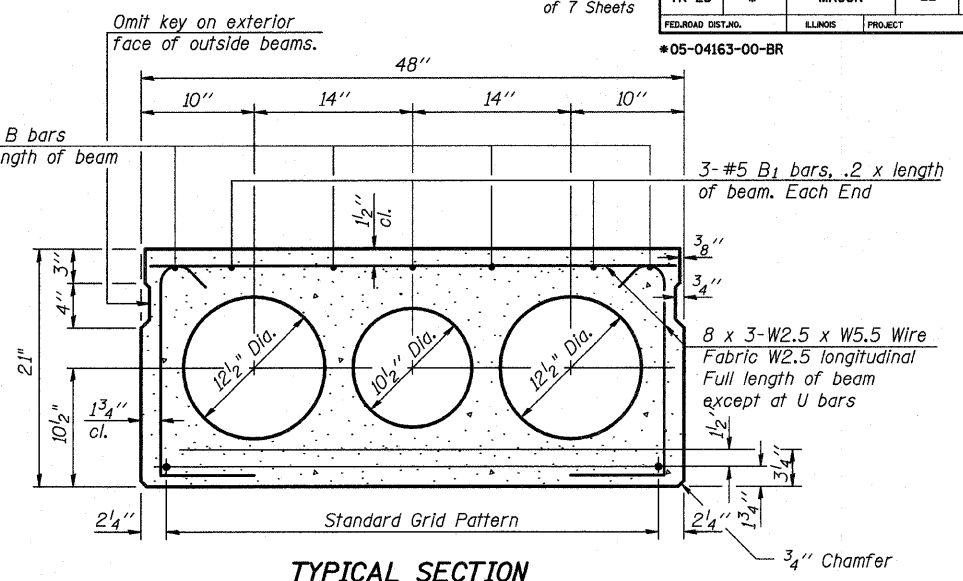
ROUTE NO.	SECTION	COUNTY	TOTAL SHEETS	SHEET NO.
TR 23	*	MACON	22	7
FED. ROAD DIST. NO.		ILLINOIS PROJECT		
05-04163-00-BR				



FIXED



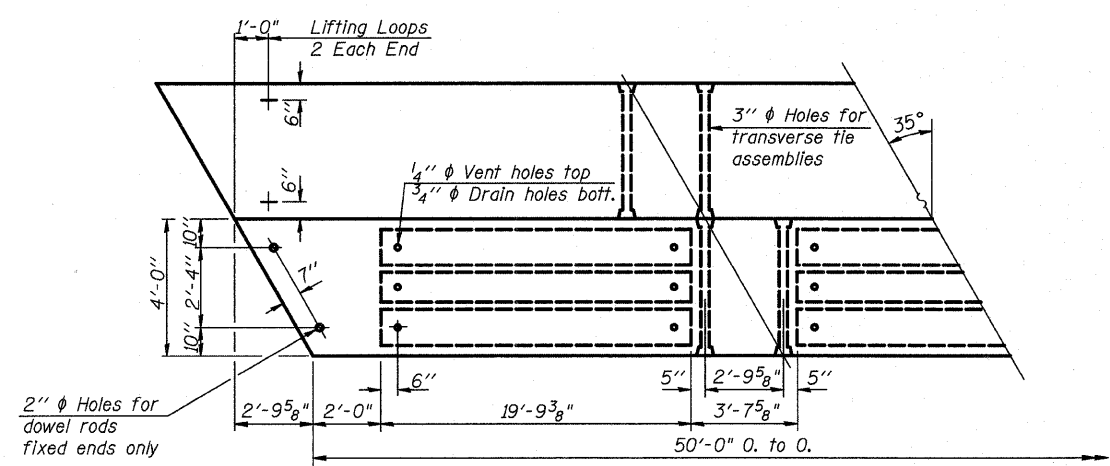
TYPICAL TRANSVERSE TIE ASSEMBLY



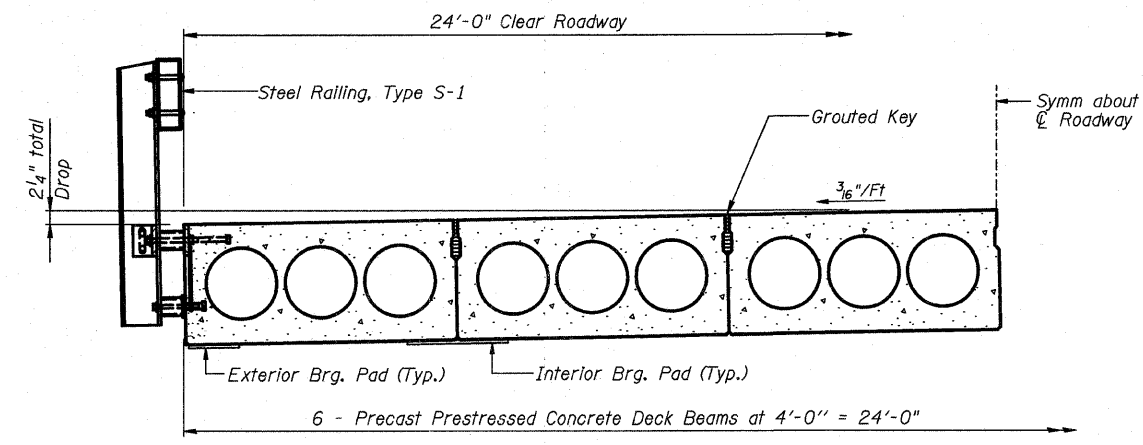
TYPICAL SECTION

1/2" ϕ Strands, Each Strand Stressed to 30,900 Lbs.
14-Strands 1 3/4" up, 4-Strands 3/4" up, 2-Strands 15" up

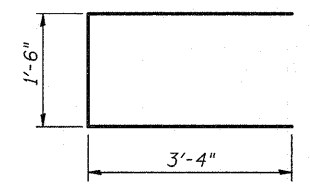
Note:
Place strands symmetrically about ϕ of beam.



PLAN



HALF CROSS SECTION

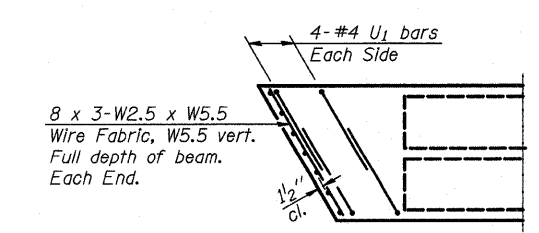


BAR U1

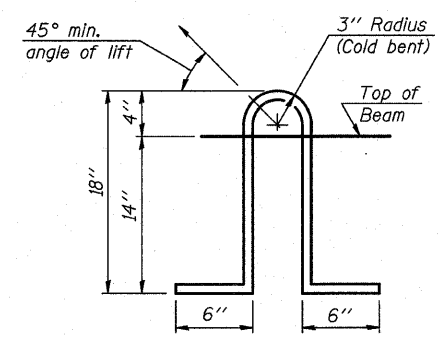
***BILL OF MATERIAL**

Bar	No.	Size	Length	Shape
B	8	#5	26'-0"	—
B1	6	#5	10'-0"	—
U1	16	#4	8'-2"	⊠
Precast Prestressed Conc. Deck Bms.		Sq. Ft.	3600	

*Note:
Above bar list is for one (1) beam only.



END PLAN



LIFTING LOOP DETAIL

NOTES

Prestressing steel shall be uncoated high strength, low relaxation 7-wire strand, Grade 270. The nominal diameter shall be 1/2" and the nominal cross-sectional area shall be 0.153 sq. in. Lifting loops shall be 2 - 1/2" ϕ -270 ksi strands, as shown. The 1" ϕ rods in the transverse tie assembly shall be tightened to a snug fit and the threads set. Pockets that receive transverse tie bar on outside shall be filled with grout after transverse tie assembly is in place. Non prestressing steel shall conform to ASTM A 706 (IL MOD), Grade 60. The bearing seat surfaces shall be adjusted by shimming to assure firm and even bearing. Two 1/8" fabric adjusting shims of the dimensions of the Exterior Bearing Pad shall be provided for each bearing. Keyway surfaces shall be cleaned to remove form oil or other bond breaking material prior to shipment of the beams. Cleaning shall be done by sandblasting the keyway areas between top of the beam and the bottom edge of the key. Corrosion Inhibitor, per Article 1020.05(b)(12) of the Standard Specifications, shall be used in the concrete for precast prestressed concrete deck beams. Required Release Strength, f'ci, shall be 5000 p.s.i.

REVISIONS		SECTION 05-04163-00-BR		FRIENDS CREEK ROAD DISTRICT		DRAWN BY DATE	
NO.	DATE	INITIALS	MACON	SN 058-3383	COUNTY	R KING	11/07
1							
2							
3							
4							
5							
6							
7							
8							
9							
10							

HOMER L. CHASTAIN & ASSOCIATES, LLP
CONSULTING ENGINEERS
184-001207

DECATUR CHICAGO
(317) 422-8844 (773) 714-0050

ROCKFORD
(815) 489-0050

BOOK NUMBER: 314
PROJECT No.: 5129
SHEET No.: