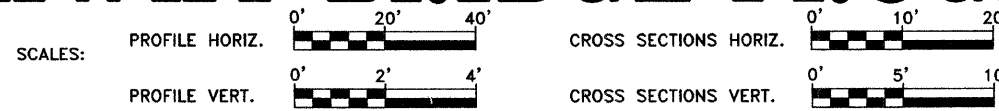


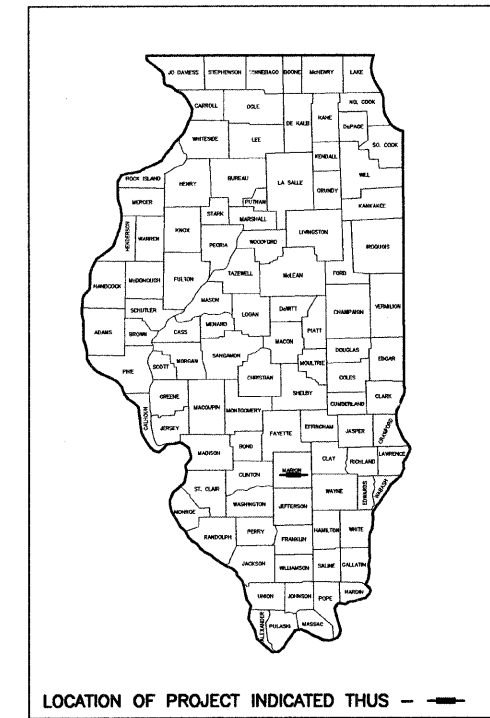
STATE OF ILLINOIS DEPARTMENT OF TRANSPORTATION DIVISION OF HIGHWAYS PLANS FOR PROPOSED HIGHWAY BRIDGE PROGRAM



SECTION 05-00125-00-BR PROJECT NO. BROS-121(47) MARION COUNTY JOB NO. C-98-310-08

CH 20 (BEE BRANCH ROAD)

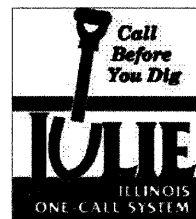
ROUTE NO.	SECTION	COUNTY	TOTAL SHEETS	SHEET NO.
CH 20	05-00125-00-BR	MARION	13	1
FED. AID PROJECT:		ILLINOIS	PROJECT	
CONTRACT NO. 97332				



INDEX OF SHEETS	
1	COVER SHEET
2	TYPICAL CROSS SECTION, GENERAL NOTES AND SUMMARY OF QUANTITIES
3	PLAN AND PROFILE SHEET
4-11	BRIDGE PLANS
12-13	CROSS SECTIONS
STANDARD 000001-05	STANDARD SYMBOLS, ABBREVIATIONS AND PATTERNS
STANDARD 280001-04	TEMPORARY EROSION CONTROL SYSTEMS
STANDARD 630301-04	SHOULDER WIDENING FOR TYPE 1 (SPECIAL) GUARDRAIL TERMINALS
STANDARD 635006-02	REFLECTOR AND TERMINAL MARKER PLACEMENT
STANDARD 701901	TRAFFIC CONTROL DEVICES
STANDARD B.L.R. 21-7	TYPICAL APPLICATION OF TRAFFIC CONTROL DEVICES FOR CONSTRUCTION ON RURAL LOCAL HIGHWAYS
STANDARD B.L.R. 27	TRAFFIC BARRIER TERMINAL TYPE 5A

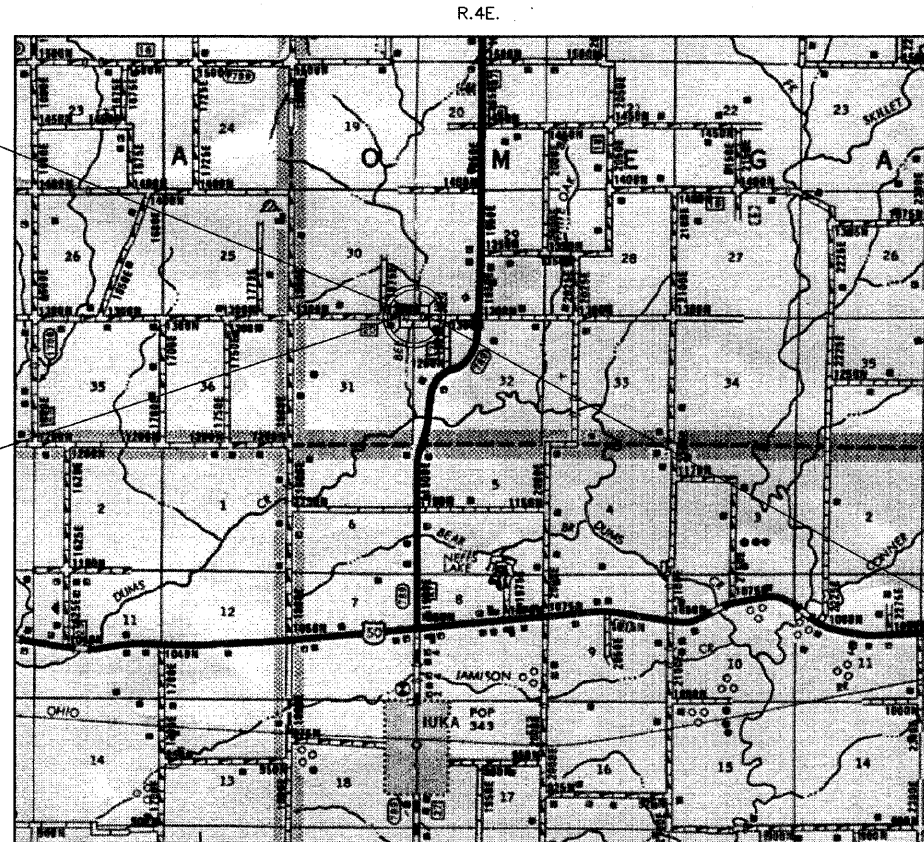
STA. 50+00 - CONSTRUCT SINGLE SPAN PRECAST PRESTRESSED CONCRETE DECK BEAM BRIDGE (61.54' BK. TO BK. ABUTMENTS) WITH SPILL THRU ABUTMENTS, 10' SKEW, 24' ROADWAY. EXISTING STRUCTURE NO. 061-3037 PROPOSED STRUCTURE NO. 061-3304

LIST OF UTILITIES	
NAME	ADDRESS
AT&T	210 N. LOCUST - CENTRALIA, IL. 62801
NORTHEAST MARION CO. WATER	5329 KINMUNDY ROAD - SALEM, IL. 62881
TRI-COUNTY ELECTRIC COOP.	3906 W. BROADWAY - MT. VERNON, IL. 62864



48 HOURS PRIOR TO EXCAVATION CALL J.U.L.I.E.: 811 OR 1-800-892-0123

CLASS ROAD: RURAL LOCAL ROAD
A.D.T. = 200
30 M.P.H.
3R POLICY



LOCATION MAP

APPROXIMATE SCALE - 1" = 0.71 MILES
NET LENGTH OF IMPROVEMENTS = 71.54 FOOT = 0.014 MILE
GROSS LENGTH OF IMPROVEMENTS = 296.54 FOOT = 0.056 MILE

APPROVED January 29, 2008.
Wally E. ...
COUNTY ENGINEER

PASSED January 30, 2008.
Richard C. ...
DISTRICT EIGHT ENGINEER OF LOCAL ROADS & STREETS

Releasing For Bid Based on Limited Review January 30, 2008.
Wally C. ...
DEPUTY DIRECTOR OF HIGHWAYS, REGION FIVE ENGINEER

STATE OF ILLINOIS
DEPARTMENT OF TRANSPORTATION



MICHAEL R. QUANDT, P.E.
SIGN: *Michael R. Quandt 01/29/08*
EXP. DATE: 11/30/2009